



Chipsmall Limited consists of a professional team with an average of over 10 year of expertise in the distribution of electronic components. Based in Hongkong, we have already established firm and mutual-benefit business relationships with customers from,Europe,America and south Asia,supplying obsolete and hard-to-find components to meet their specific needs.

With the principle of “Quality Parts,Customers Priority,Honest Operation,and Considerate Service”,our business mainly focus on the distribution of electronic components. Line cards we deal with include Microchip,ALPS,ROHM,Xilinx,Pulse,ON,Everlight and Freescale. Main products comprise IC,Modules,Potentiometer,IC Socket,Relay,Connector.Our parts cover such applications as commercial,industrial, and automotives areas.

We are looking forward to setting up business relationship with you and hope to provide you with the best service and solution. Let us make a better world for our industry!



Contact us

Tel: +86-755-8981 8866 Fax: +86-755-8427 6832

Email & Skype: info@chipsmall.com Web: www.chipsmall.com

Address: A1208, Overseas Decoration Building, #122 Zhenhua RD., Futian, Shenzhen, China



INTERCONNECTS

SERIES 714...01X • .100" GRID ULTRA LOW PROFILE CARRIERS • SINGLE AND DOUBLE ROW STRIPS

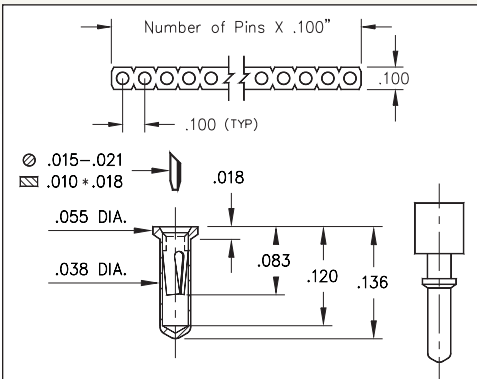


FIG. 1

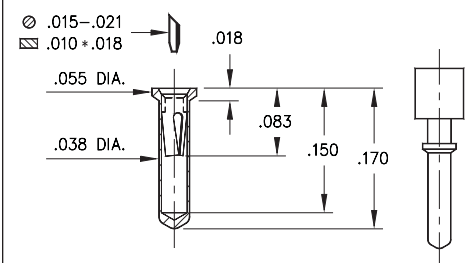


FIG. 2

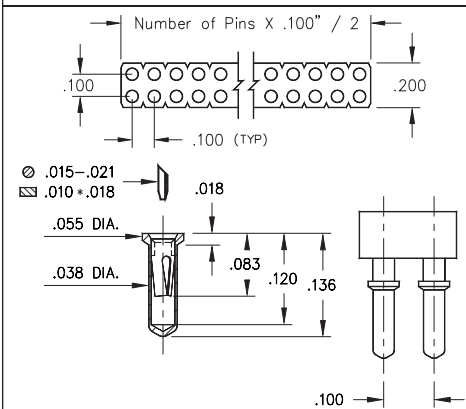


FIG. 3

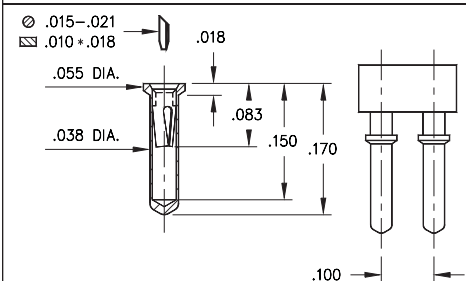
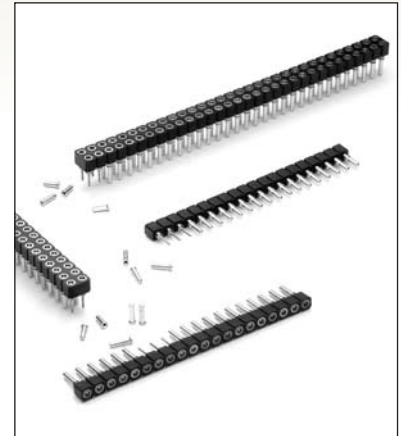


FIG. 4

- Ultra low profile receptacles sit .018" above the board
- Series 714 use MM #0552-1 and MM #0552-2 pin receptacles. See page 158 for details
- Hi-Rel, 3-finger BeCu #11 contact is rated at 3 amps. See page 251 for details
- Insulators are high temperature thermoplastic, suitable for all soldering operations



ORDERING INFORMATION

| | |
|---------------|---|
| FIG. 1 | Single Row (.039" min. mounting hole) |
| | 714-XX-1__-31-012000 Specify number of pins 01-64 |
| FIG. 2 | Single Row (.039" min. mounting hole) |
| | 714-XX-1__-31-018000 Specify number of pins 01-64 |
| FIG. 3 | Double Row (.039" min. mounting hole) |
| | 714-XX-2__-31-012000 Specify number of pins 04-64 |
| FIG. 4 | Double Row (.039" min. mounting hole) |
| | 714-XX-2__-31-018000 Specify number of pins 04-64 |



XX=Plating Code
See Below

For
Electrical, Mechanical
& Environmental Data,
See page 264

| SPECIFY PLATING CODE XX= | 91 | 93 | 41 | 43 |
|--------------------------|-------------|-------------|----------|----------|
| Sleeve (Pin) | 200 μ"Sn/Pb | 200 μ"Sn/Pb | 200 μ"Sn | 200 μ"Sn |
| Contact (Clip) | 10 μ" Au | 30 μ" Au | 10 μ" Au | 30 μ" Au |

