

PRODUCT NUMBER
71607-XXXXLF

ROHS COMPATIBLE, SEE NOTE 6

OPTIONAL LETTER

A: PRODUCT PACKED IN TAPE & REEL, SEE TAB556.

NUMBER OF POSITIONS: 02 TO 40.

PLATING CODE

3= 0.76µm GOLD ON CONTACT AREA.

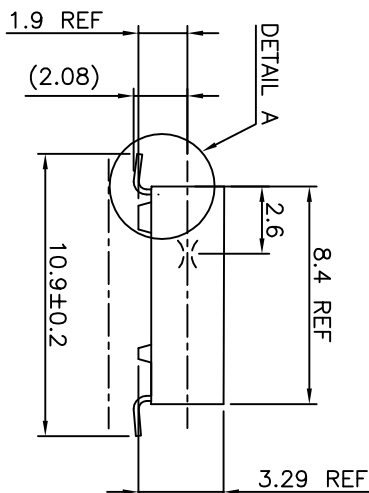
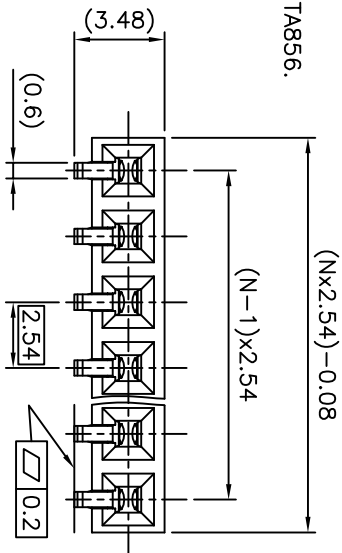
2µm MIN MATTE TIN ON TAIL.

4= 2µm MIN MATTE TIN FULL PLATED

8= 0.35µm GOLD ON CONTACT AREA.

2µm MIN MATTE TIN ON TAIL.

1.27µm Ni MIN UNDERPLATING



NOTES:

1 - HOUSING MAT'L: THERMOPLASTIC GLASS FILLED
FLAME RETARDANT PER UL 94 V-0 COLOR: GREY.

2 - TERMINAL MATERIAL: PHOSPHOR BRONZE.

3 - 2 UP TO 4 POSITIONS PRODUCT PACKED
IN PLASTIC BOX

5 UP TO 40 POSITIONS PRODUCT PACKED IN TUBE.

4 - TO DETERMINE DIMENSIONS:

N = NUMBER OF POSITIONS

EXAMPLE: 8 POS: (N+2.54)-0.08=20.24 mm

5 - RECOMMENDED IR PROFIL PER TA 842.

6 - ROHS COMPATIBLE PRODUCT SPECIFICATIONS

d - PLATING:

- "LF" MEANS THE PRODUCT IS LEAD-FREE,
2µm MINIMUM MATTE TIN OVER 1.27µm
MINIMUM NICKEL UNDERPLATE.

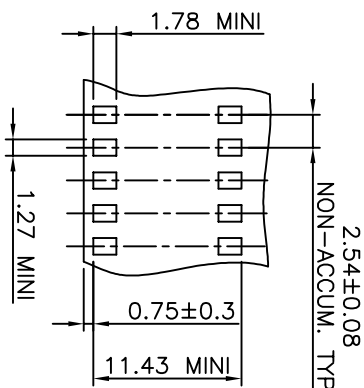
b - MANUFACTURING PROCESS COMPATIBILITY

- THE HOUSING WILL WITHSTAND EXPOSURE TO
260°C PEAK TEMPERATURE FOR 30 SECONDS
MAX IN A CONVECTION, INFRA-RED OR VAPOR
PHASE OR REFLOW OVEN.

c - LABELING:

- MEETS PACKAGING SPECS AS PER GS-14-920

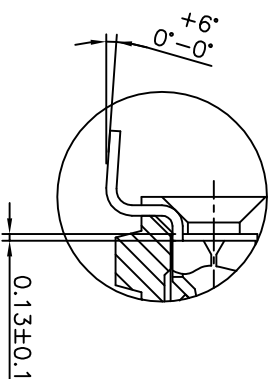
d - LEGAL STATEMENT: SEE GS-47-0004



SCALE 2.5:1

PRINTED CIRCUIT BOARD

RECOMMENDED HOLE PATTERN



DETAIL A
SCALE 20:1

mat'l. code	surface	tolerance	projection	product family
SEE NOTE 1	ISO 1302	ISO 406	ISO 1101	DUBOX
lfr	ecm no	dr	date	tolerances unless otherwise specified
T	F04-0347	DLE	04.11.08	angles
U	F06-0204	DLE	06.06.10	linear
V	B-19123	LMU	14.10.20	±0.3
dr	P NIZZI			scale 10:1
engr	P NIZZI			
chr	JF NOTTEAU			
appd	PNZ			
sheet	revision			
index	sheet			



BtB RECEIPT.
HORIZ SR SMT

71607

sheet 1 of 1

A3

type CUSTOMER Drawing