



Chipsmall Limited consists of a professional team with an average of over 10 year of expertise in the distribution of electronic components. Based in Hongkong, we have already established firm and mutual-benefit business relationships with customers from,Europe,America and south Asia,supplying obsolete and hard-to-find components to meet their specific needs.

With the principle of “Quality Parts,Customers Priority,Honest Operation,and Considerate Service”,our business mainly focus on the distribution of electronic components. Line cards we deal with include Microchip,ALPS,ROHM,Xilinx,Pulse,ON,Everlight and Freescale. Main products comprise IC,Modules,Potentiometer,IC Socket,Relay,Connector.Our parts cover such applications as commercial,industrial, and automotives areas.

We are looking forward to setting up business relationship with you and hope to provide you with the best service and solution. Let us make a better world for our industry!



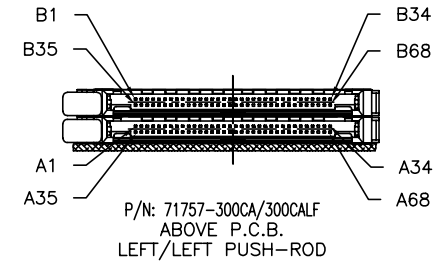
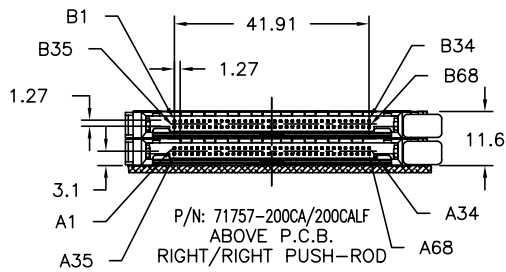
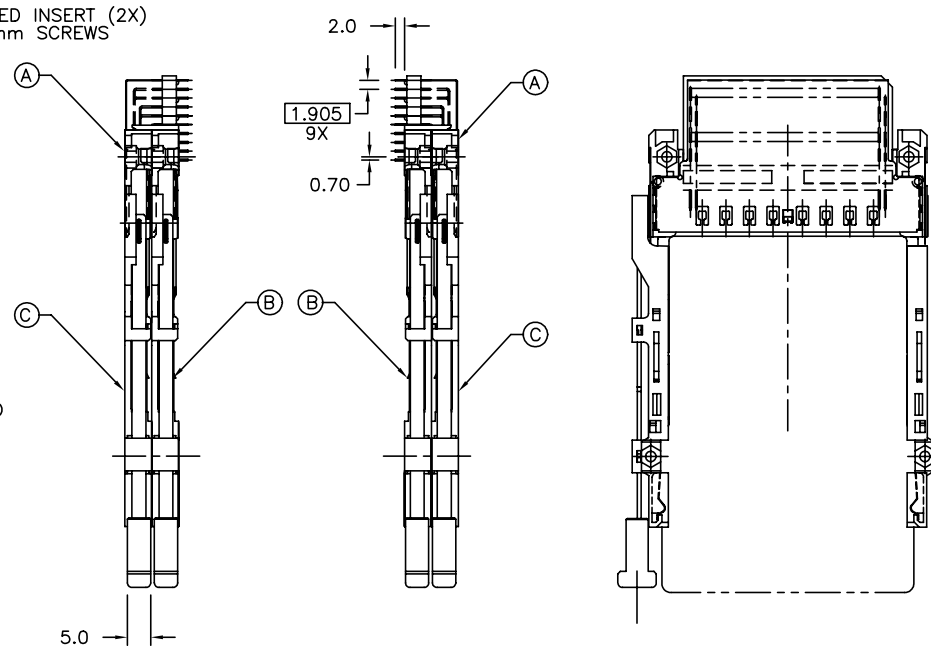
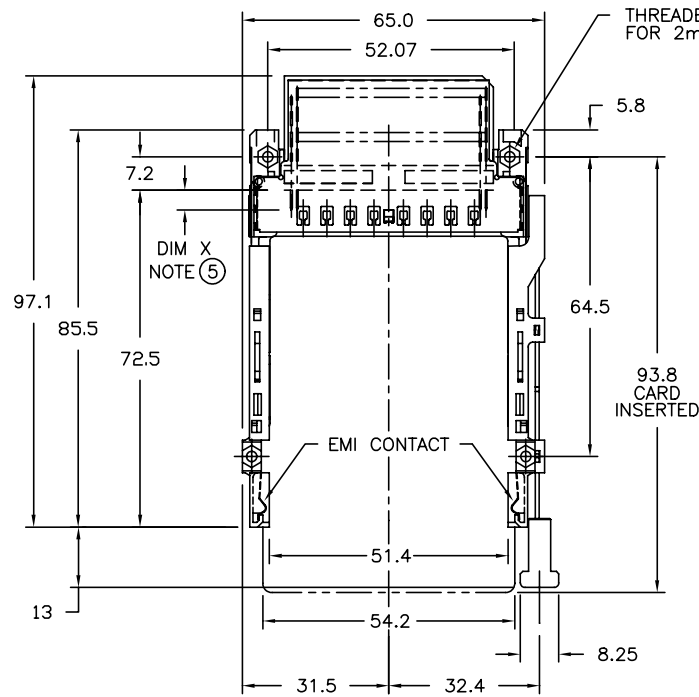
## Contact us

Tel: +86-755-8981 8866 Fax: +86-755-8427 6832

Email & Skype: info@chipsmall.com Web: www.chipsmall.com

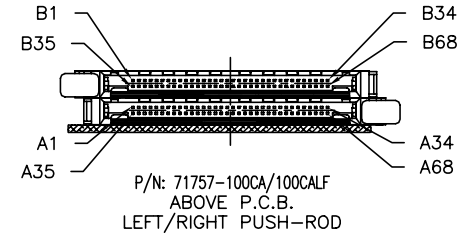
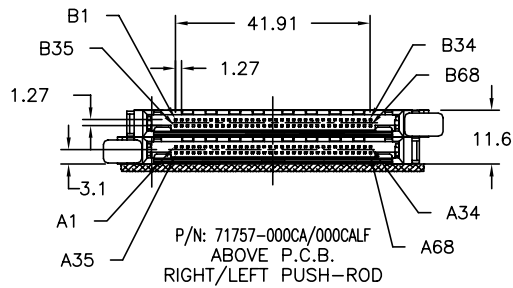
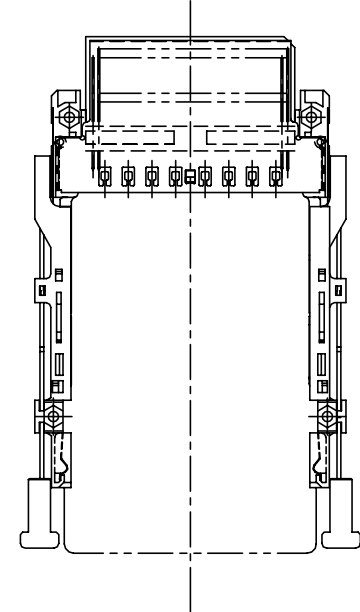
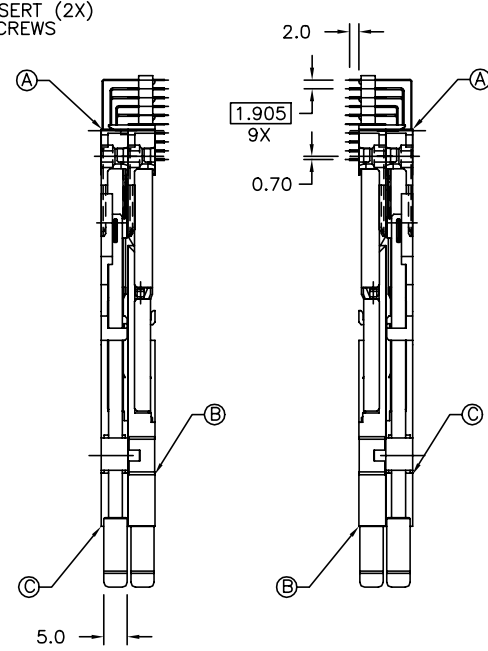
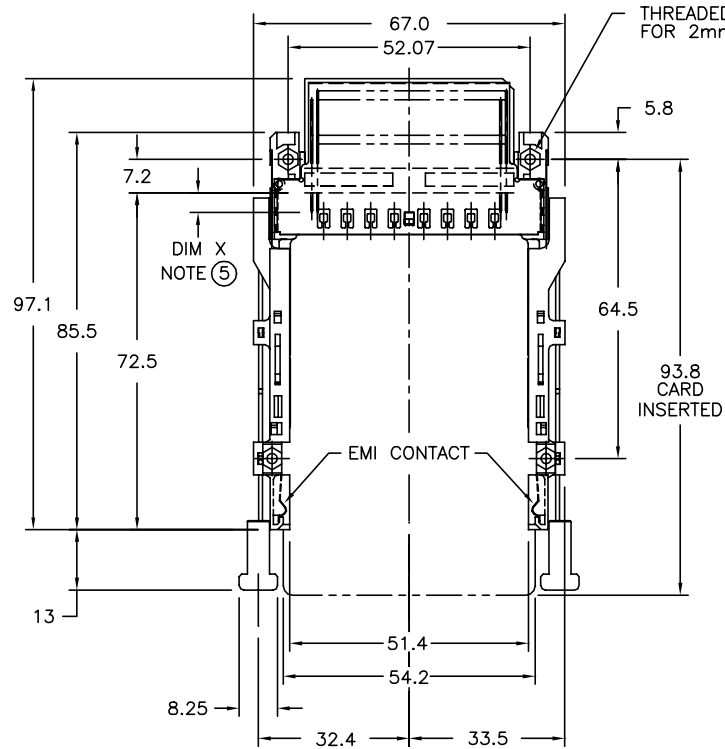
Address: A1208, Overseas Decoration Building, #122 Zhenhua RD., Futian, Shenzhen, China





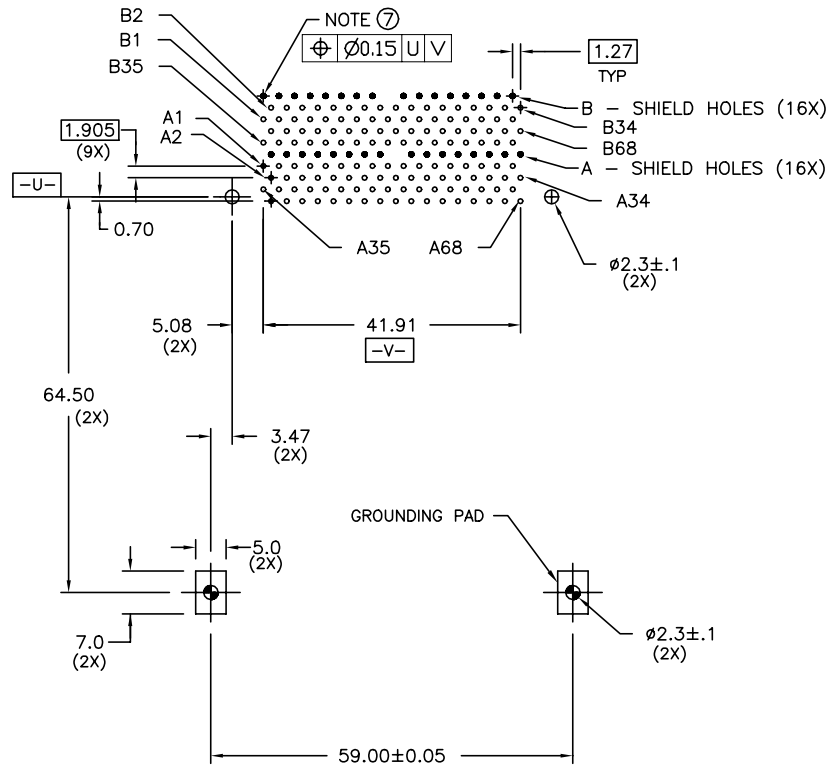
PRODUCT NUMBER	DOUBLE - DECK HEADER (A)	LOWER EJECT MECHANISM (B)	UPPER EJECT MECHANISM (C)
71757-200CALF	71257-0000LF	72336-000CA	72336-000CA
71757-300CALF	71257-0000LF	72336-100CA	72336-100CA
71757-200CA	71257-0000	72336-000CA	72336-000CA
71757-300CA	71257-0000	72336-100CA	72336-100CA

mat'l. code		surface	tolerance	projection	product family
l t r e c n n o d r		ISO1302	ISO406 ISO1101	MM	PCMCIA
J	ELX-N-007946	ZK	11/01/11	0.X±0.3	R/A CARDBUS DOUBLE DECK ASSEMBLY
k	ELX-N-011406	ZK	04/07/12	0.XX±0.13	
D	V70389	RHG	03/25/97	0°±2'	scale 3/4
E	V71446	RHG	10/07/97	dr	D.SHEAFFER 08/31/95
F	V81800	CGC	10/20/98	engr	D.BRANN 08/31/95
G	V12164	TFG	08/16/01	chr	D.BRANN 08/31/95
H	N05-0054	WB	03/01/05	appd	D.BRANN 08/31/95
sheet index	revision	K	K	K	
	sheet	1	2	3	



PRODUCT NUMBER	DOUBLE - DECK HEADER (A)	LOWER EJECT MECHANISM (B)	UPPER EJECT MECHANISM (C)
71757-000CALF	71257-0000LF	72336-100CA	72336-000CA
71757-100CALF	71257-0000LF	72336-000CA	72336-100CA
71757-000CA	71257-0000	72336-100CA	72336-000CA
71757-100CA	71257-0000	72336-000CA	72336-100CA

mat'l. code		surface / tolerance		projection		product family	
		ISO1302 ✓ ISO406 ISO1101				PCMCIA	
ltr ecn nodr		date		tolerances unless otherwise specified		title	
K				0.X±0.3 0.XX±0.13 0.XXX±0.05		R/A CARDBUS DOUBLE DECK ASSEMBLY	
				angle 0°±2'		MM scale 3/4	
		dr D.SHEAFFER 08/31/95				dwg no sheet 2 of 3 size	
		enrg D.BRANN 08/31/95				71757 A4	
		chr D.BRANN 08/31/95				type Product Customer Drawing	
sheet index		revision sheet					



NOTES:

- 1 8mm MIN CARD EJECT.
- 2 EJECT TRAVEL: 9.5mm
- 3 MATERIAL:
  - 3.1 HEADER ASSY:  
HOUSING: HIGH TEMPERATURE THERMOPLASTIC UL94V-0 BLACK  
PIN: COPPER ALLOY
  - 3.2 EJECT MECHANISM ASSY:  
HOUSING: HIGH TEMPERATURE THERMOPLASTIC UL94V-0 BLACK  
COVER PLATE, EJECT PLATE, LINK ARM,  
PUSH ROD: STAINLESS STEEL  
EMI CONTACT: PHOSPHOR BRONZE
- 4 FINISH (PIN)  
UNDER PLATING: 0.5um Ni  
CONTACT AREA: 0.076 μm MIN. GOLD

SOLDER TAIL(TIN LEAD OPTION): 2.5um Sn-Pb  
SOLDER TAIL(LEAD FREE OPTION): 2.5um PURE TIN

⑤	DIM "X"	4.25±0.1	3.5±0.1	5.0±0.1
	PIN NUMBER	OTHERS	36,67	1,17,34,35,51,68

- 6 RECOMMENDED SCREW TORQUE: 1.0 TO 1.5 MAX in-lbs. (1.2-1.7 cm-kgs).  
RECOMMENDED HOLD DOWN: 2mm SCREWS AND NUTS  
SEE 95121 AND 92869 FOR INFORMATION.
- 7 RECOMMENDED DIAMETER IS 1.0. FOR PROCESSES USING PASTE REFLOW, HOLE MAY BE AS SMALL AS 0.79.
- 8 IF LEAD FREE P/N.THE HOUSING WILL WITHSTAND EXPOSURE TO 260°C PEAK TEMPERATURE FOR 10 SECONDS IN A WAVE SOLDER APPLICATION WITH A 1.00MM MINIMUM THICK CIRCUIT BOARD.
- 9 IF LEAD FREE P/N.THE PRODUCT MEETS EUROPEAN UNION DIRECTIVES AND OTHER COUNTRY REGULATIONS AS DISCRIBLED IN GS-22-008
- 10 LEAD FREE P/N PACKAGING MEETS GS-14-920 SPECIFICATION
- 11 PRODUCT SPEC: 110-263

mat'l. code	surface ISO1302	tolerance ISO406 ISO1101	projection MM	product family PCMCIA
ltr ecn nodr date	tolerances unless otherwise specified			title
K	angle	0.X±0.3	MM	R/A CARDBUS DOUBLE DECK ASSEMBLY
	σ±2°	0.XX±0.13	scale 3/4	
	dr	D.SHEAFFER 08/31/95	FCI	dwg no
	engr	D.BRANN 08/31/95		sheet 3 of 3
	chr	D.BRANN 08/31/95		71757
	appd	D.BRANN 08/31/95		size A4
sheet index	revision sheet			type Product Customer Drawing