



Chipsmall Limited consists of a professional team with an average of over 10 year of expertise in the distribution of electronic components. Based in Hongkong, we have already established firm and mutual-benefit business relationships with customers from,Europe,America and south Asia,supplying obsolete and hard-to-find components to meet their specific needs.

With the principle of “Quality Parts,Customers Priority,Honest Operation,and Considerate Service”,our business mainly focus on the distribution of electronic components. Line cards we deal with include Microchip,ALPS,ROHM,Xilinx,Pulse,ON,Everlight and Freescale. Main products comprise IC,Modules,Potentiometer,IC Socket,Relay,Connector.Our parts cover such applications as commercial,industrial, and automotives areas.

We are looking forward to setting up business relationship with you and hope to provide you with the best service and solution. Let us make a better world for our industry!



## Contact us

Tel: +86-755-8981 8866 Fax: +86-755-8427 6832

Email & Skype: info@chipsmall.com Web: www.chipsmall.com

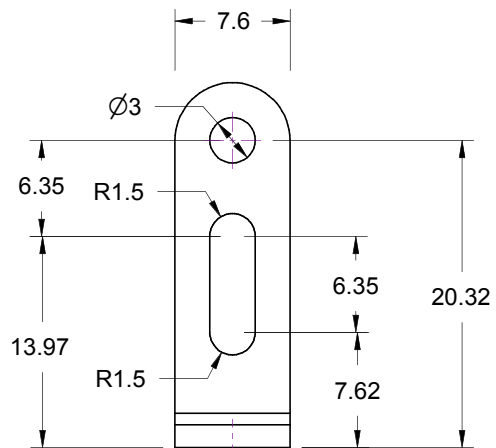
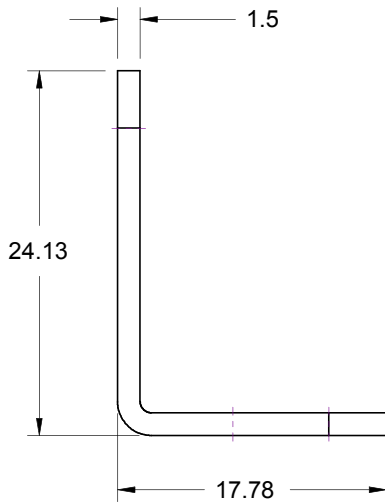
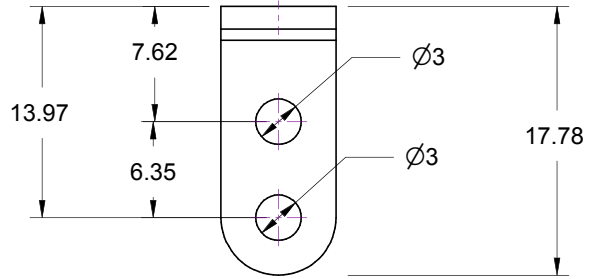
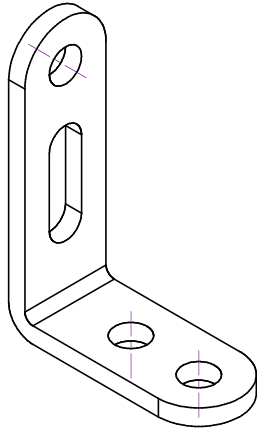
Address: A1208, Overseas Decoration Building, #122 Zhenhua RD., Futian, Shenzhen, China





REVISIONS

ZONE	REV	DESCRIPTION	DATE	APPROVED



Parallax, Inc.  
599 Menlo Dr.  
Rocklin, CA 95765  
USA  
916 624-8333

DRAWN  
Rich Allred  
DATE  
May-8-07

CHECKED

QA

MFG

APPROVED

# Universal 90 bracket

1.5mm Aluminum

SIZE  
**A**

FSCM NO.

DWG NO.

REV  
**A**

SCALE 2:1

SHEET 1 of 1

