



Chipsmall Limited consists of a professional team with an average of over 10 year of expertise in the distribution of electronic components. Based in Hongkong, we have already established firm and mutual-benefit business relationships with customers from,Europe,America and south Asia,supplying obsolete and hard-to-find components to meet their specific needs.

With the principle of "Quality Parts,Customers Priority,Honest Operation,and Considerate Service",our business mainly focus on the distribution of electronic components. Line cards we deal with include Microchip,ALPS,ROHM,Xilinx,Pulse,ON,Everlight and Freescale. Main products comprise IC,Modules,Potentiometer,IC Socket,Relay,Connector.Our parts cover such applications as commercial,industrial, and automotives areas.

We are looking forward to setting up business relationship with you and hope to provide you with the best service and solution. Let us make a better world for our industry!



Contact us

Tel: +86-755-8981 8866 Fax: +86-755-8427 6832

Email & Skype: info@chipsmall.com Web: www.chipsmall.com

Address: A1208, Overseas Decoration Building, #122 Zhenhua RD., Futian, Shenzhen, China



High Voltage (Plate) 700 Series

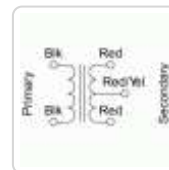
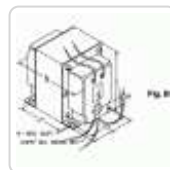
115 V or 117/234 V Primary

Features



- Two versions available:
 - Primary 115 VAC, 50/60 Hz. or
 - Primary 117/234 VAC, 50/60 Hz.
- At 2,000 VAC and above, secondary leads are through rubber bushings (figure B).
- Units can be run full wave bridge or full wave C.T.
- V.A. is a C.C.S. rating
- Current ratings are CCS (Continuous Commercial Service) & ICAS ratings (Intermittent Commercial or Amateur Service).
- Enclosed, 4 hole chassis mount.
- Minimum 6" long leads.
- Class A insulation (105 degrees C).
- Hi-Pot test at a minimum of twice secondary voltage
- Conservative designs - CSA certified (209651).
- For other H.V. combinations check out our **Peter W. Dahl** series as well.
- **Notes:**
 - VA rating specified is CCS (Continuous Commercial Service)
 - ICAS ratings (Intermittent Commercial or Amateur Service)
 - 115VAC only models - Input Black & Black
 - Dual Primary (117/230VAC) models - 117VAC input: connect Blue to Black and Brown to White.
 - 234VAC input: connect Brown to Black - input is Blue & White

Gallery



Part No. 115 VAC Primary	Part No. 117/234 VAC Primary	A.C. High Voltage Secondary		H.V. Secondary Current		Drawing Type	Dimensions					Weight (Lbs)
		V.A.	R.M.S.	(CCS)	(ICAS)		A	B	C	D	E	
710	710A	110	750V C.T.	147ma.	221ma.	A	3.75	4.13	4.50	3.00	2.25	7.2
712	712A	130	850V C.T.	215ma.	323ma.	A	3.75	4.63	4.50	3.00	2.75	8.8000000000000001
714	714A	180	1,020V C.T.	170ma.	255ma.	A	3.13	3.75	3.75	2.50	2.38	5.5
715	715A	200	1,020V C.T.	300ma.	450ma.	A	3.75	4.63	4.50	3.00	2.75	9
717	717A	510	1,020V C.T.	500ma.	750ma.	A	5.00	5.25	6.50	4.56	3.25	17.7
718	718A	235	1,250V C.T.	200ma.	300ma.	A	3.75	4.38	4.50	3.00	2.50	8
720	720A	370	1,250V C.T.	300ma.	450ma.	A	3.75	5.38	4.50	3.00	3.50	12

Part No. 115 VAC Primary	Part No. 117/234 VAC Primary	A.C. High Voltage Secondary		H.V. Secondary Current		Drawing Type	Dimensions					Weight (Lbs)
		V.A.	R.M.S.	(CCS)	(ICAS)		A	B	C	D	E	
722	722A	625	1,250V C.T.	500ma.	750ma.	A	5.00	5.25	6.50	4.56	3.25	17.7
724	724A	345	1,500V C.T.	226ma.	339ma.	A	3.75	5.25	4.50	3.00	3.38	12
726	726A	312	1,780V C.T.	202ma.	299ma.	A	3.75	5.25	4.50	3.00	3.38	12
728	728A	210	2,000V C.T.	175ma.	263ma.	B	3.75	5.25	4.50	3.00	3.38	12
732	732A	500	2,500V C.T.	200ma.	300ma.	B	5.00	5.25	6.50	4.56	3.25	17.7
733	733A	750	2,500V C.T.	300ma.	450ma.	B	5.00	6.00	6.50	4.56	4.00	24
735	735A	735	3,000V C.T.	250ma.	375ma.	B	5.00	6.00	6.50	4.56	4.00	24
737	737A	1200	3,000V C.T.	400ma.	600ma.	B	5.00	7.00	6.50	4.56	5.00	28.5
739	739A	1400	3,500V C.T.	400ma.	600ma.	B	5.00	7.63	6.50	4.56	5.50	34.7

Data subject to change without notice

© 2017. Hammond Manufacturing Ltd. All rights reserved.