



Chipsmall Limited consists of a professional team with an average of over 10 year of expertise in the distribution of electronic components. Based in Hongkong, we have already established firm and mutual-benefit business relationships with customers from,Europe,America and south Asia,supplying obsolete and hard-to-find components to meet their specific needs.

With the principle of “Quality Parts,Customers Priority,Honest Operation,and Considerate Service”,our business mainly focus on the distribution of electronic components. Line cards we deal with include Microchip,ALPS,ROHM,Xilinx,Pulse,ON,Everlight and Freescale. Main products comprise IC,Modules,Potentiometer,IC Socket,Relay,Connector.Our parts cover such applications as commercial,industrial, and automotives areas.

We are looking forward to setting up business relationship with you and hope to provide you with the best service and solution. Let us make a better world for our industry!



Contact us

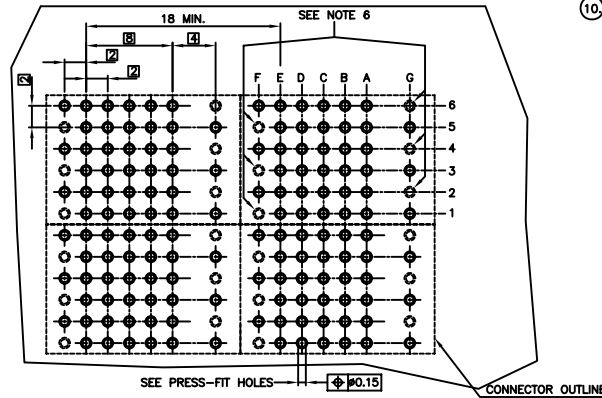
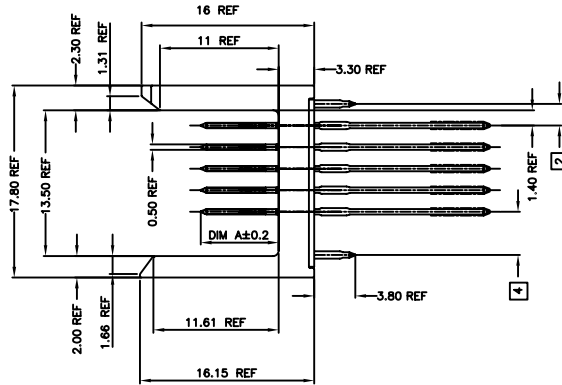
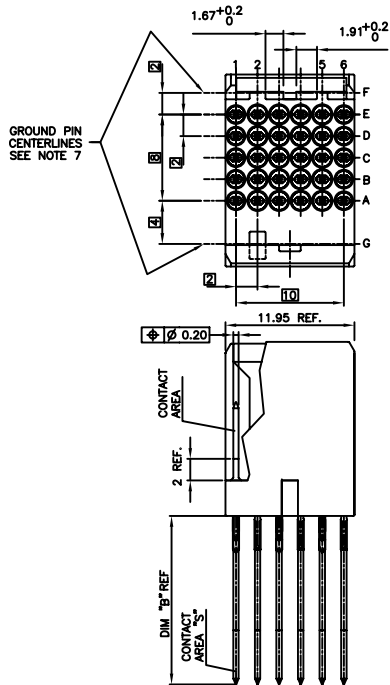
Tel: +86-755-8981 8866 Fax: +86-755-8427 6832

Email & Skype: info@chipsmall.com Web: www.chipsmall.com

Address: A1208, Overseas Decoration Building, #122 Zhenhua RD., Futian, Shenzhen, China



PRODUCT NUMBER
72018-XYX
72018-XYLF



REQUIRED PC BOARD LAYOUT
COMPONENT SIDE
SEE PRINT 58351 FOR
ADDITIONAL PCB INFORMATION

PLATING IN CONTACT AREA	
DASH NUMBER	PERFORMANCE LEVEL
-1YY	TELCORDIA CO
-2YY	TELECOM CLASS
-3YY	IEC CLASS 1
-5YY	TELCORDIA UE
-9YY	0.76 μ m GXT
-1YLF	TELCORDIA CO
-2YLF	TELECOM CLASS
-3YLF	IEC CLASS 1
-5YLF	TELCORDIA UE
-9YLF	0.76 μ m GXT

NOTES:

- FOR DIM "A", AND "B" SEE SHEET 2
- BODY MAT'L: ZINC ALLOY
- PIN MAT'L: PHOSPHOR BRONZE.
- CONTACT AREA "S" ONLY FOR REAR PLUG-UP.
- PLATING ON PRESSFIT AREA: -XYX IS SnPb
-XYLF IS Sn (LEAD FREE)
- THESE HOLES ARE NEEDED WHEN USING AN EE SHROUD, I.e., 70438-111.
- GROUND PINS IN POSITIONS F2, F4, F6, G1, G3, AND G5.
- DIM "A" AFTER ASSEMBLY TO BOARDS.
- THE PRODUCTS WHERE THE PART NUMBER ENDS IN LF MEET THE EUROPEAN UNION DIRECTIVES AND OTHER COUNTRY REGULATIONS AS DESCRIBED IN GS-22-008.
THESE PRODUCTS WILL NOT WITHSTAND WAVE SOLDER OR REFLOW OPERATIONS.
- FOR LEAD FREE PART NUMBERS, ADD AN 'LF' SUFFIX. EXAMPLE: 72018-X11LF.

SEE NOTES				surface	tolerance	projection	product family	
ltr	ec'n no	dr	date	ASME Y14.5	ASME Y14.5	ϕ	METRAL (tm)	
H	V03-1127	HTB	2003-20-27	angles	X #3	MM	5 ROW P.F. EE HDR.	
J	V04-0609	TAB	2004-07-08		XX #18	scale 1:1	ASSY.-12MM-SEL. LOAD	
K	V05-0575	DAI	2005-08-08	0° ±2'	XXX #051		dwg no	
L	V06-0606	JRV	2006-06-21	dr	S. STONER 1996-08-12		sheet 1 of 2	
				eng	R. DOUTRICH 1996-08-12		72018	size
				chr	S. STONER 1996-08-12		A4	
				appd	S. STONER 1996-08-12		type	CUSTOMER Drawing
sheet index	revision sheet	L	L					
		1	2					

METRAL P/N	ROW	CONTACT CODE					
		1	2	3	4	5	6
72018-X01 NOTE 10 LEAD FREE OPTION	E	03	03	01	02	02	02
	D	03	03	01	02	02	02
	C	03	03	01	02	02	02
	B	03	03	01	02	02	02
	A	03	03	01	02	02	02

METRAL P/N	ROW	CONTACT CODE					
		1	2	3	4	5	6
72018-X02 NOTE 10 LEAD FREE OPTION	E	01	01	01	01	03	04
	D	01	01	01	01	03	04
	C	01	01	01	01	03	04
	B	01	01	01	01	03	04
	A	01	01	01	01	03	04

METRAL P/N	ROW	CONTACT CODE					
		1	2	3	4	5	6
72018-X03 NOTE 10 LEAD FREE OPTION	E	04	03	03	01	01	01
	D	04	03	03	01	01	01
	C	04	03	03	01	01	01
	B	04	03	03	01	01	01
	A	04	03	03	01	01	01

METRAL P/N	ROW	CONTACT CODE					
		1	2	3	4	5	6
72018-X04 NOTE 10 LEAD FREE OPTION	E	02	19	02	02	02	02
	D	02	02	19	02	02	01
	C	02	19	02	02	02	19
	B	02	02	19	02	02	01
	A	02	19	02	02	02	19

METRAL P/N	ROW	CONTACT CODE					
		1	2	3	4	5	6
72018-X05 NOTE 10 LEAD FREE OPTION	E	03	03	03	03	03	03
	D	03	03	03	03	03	03
	C	01	03	03	03	03	03
	B	03	03	03	03	03	03
	A	03	03	03	03	03	03

METRAL P/N	ROW	CONTACT CODE					
		1	2	3	4	5	6
72018-X06 NOTE 10 LEAD FREE OPTION	E	03	03	03	03	03	03
	D	03	03	03	01	03	03
	C	03	03	03	03	03	03
	B	03	03	03	03	03	03
	A	03	03	03	03	03	03

METRAL P/N	ROW	CONTACT CODE					
		1	2	3	4	5	6
72018-X07 NOTE 10 LEAD FREE OPTION	E	03	19	03	03	03	03
	D	03	19	03	03	03	03
	C	03	19	03	03	03	03
	B	03	19	03	03	03	03
	A	03	19	03	03	03	03

KEY *		
CODE	DIMENSIONS	
	DIM "A"	DIM "B"
01	5.00	4.30
02	5.75	4.30
03	6.50	4.30
04	7.25	4.30
19	8.00	4.30

* AFTER INSERTION INTO CIRCUIT BOARD WITH QUALIFIED TOOLING

A

A

B

B

mat'l. code		surface		tolerance		projection		product family		
SEE NOTES		ASME Y14.5		ASME Y14.5				METRAL (tm)		
ltr	ecn no	dr	date	tolerances unless otherwise specified				title		
L				angles	X ±3		MM		5 ROW P.F. EE HDR. ASSY.-12MM-SEL. LOAD	
				0° ±2'	.XX ±.13		scale 1:1			
					.XXX ±.051					
		dr	S. STONER	1996-08-12			dwg no		sheet 2 of	size
		engr	R. DOUTRICH	1996-08-12			72018		A4	
		chr	S. STONER	1996-08-12			type		CUSTOMER Drawing	
		appd	S. STONER	1996-08-12						
sheet index	revision sheet									