

Chipsmall Limited consists of a professional team with an average of over 10 year of expertise in the distribution of electronic components. Based in Hongkong, we have already established firm and mutual-benefit business relationships with customers from,Europe,America and south Asia,supplying obsolete and hard-to-find components to meet their specific needs.

With the principle of “Quality Parts,Customers Priority,Honest Operation,and Considerate Service”,our business mainly focus on the distribution of electronic components. Line cards we deal with include Microchip,ALPS,ROHM,Xilinx,Pulse,ON,Everlight and Freescale. Main products comprise IC,Modules,Potentiometer,IC Socket,Relay,Connector.Our parts cover such applications as commercial,industrial, and automotives areas.

We are looking forward to setting up business relationship with you and hope to provide you with the best service and solution. Let us make a better world for our industry!



Contact us

Tel: +86-755-8981 8866 Fax: +86-755-8427 6832

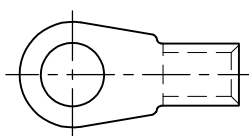
Email & Skype: info@chipsmall.com Web: www.chipsmall.com

Address: A1208, Overseas Decoration Building, #122 Zhenhua RD., Futian, Shenzhen, China

RELEASED FOR PUBLICATION
 FREI FUER VEROEFFENTLICHUNG
 ,19--
 ALL RIGHTS RESERVED.
 ALLE RECHTE VORBEHALTEN.
 BY TE INCORPORATED.
 COPYRIGHT 1997
 THIS DRAWING IS UNPUBLISHED.
 VERTRAULICHE UNVEROEFFENTLICHE ZEICHNUNG.

MATED WITH: PASSEND ZU:	LOC	DIST	REVISIONS AENDERUNGEN					
-	A	-	P	LTR	DESCRIPTION BESCHREIBUNG	DATE	DWN	APVD
PROJEKT NR.:	E97-52519		B4	STD. PACKING QTY. CORRECTED FOR P/N 726348-2		02APR2014	KJK	JK

TERMINAL LUG ACCORDING TO VG 96933-13:
KABELSCHUH ENTSPRECHEND VG 96933-13:



DRAWING NOT AT SCALE
 DARSTELLUNG NICHT MAßSTÄBLICH

TERMINAL LUG VG 96933 T 13 A ____ A
 KABELSCHUH

DASH-NO. PER VG TEILE-NR. NACH VG	TE PART NO. TE BESTELL-NR.	PACKING UNIT VERPACKUNGS- EINHEIT	
049	726 348-1	75	OBSOLETE
050	726 348-2	60	
051	726 348-3	75	
052	726 348-4	60	OBSOLETE ¹

PACKING:
 BULK PACKAGING IN FOLDING BOX
 PACKING UNIT: SEE TABLE

VERPACKUNG:
 SCHÜTTGUT IN FALTSCHACHTEL
 VERPACKUNGSEINHEIT: SIEHE TABELLE

¹ OBSOLETE PARTS: OBSOLETE CIS STREAMLINING PER D.RENAUD/D.SINISI

DIMENSIONS: DIMENSIONEN: mm	DWN	S.STOLZ	06-OCT-97	MATERIAL	-	FINISH OBERFLAECHE/FARBE	-
	CHK	W.BÖCK	06-OCT-97	TE Connectivity			
TOLERANCES UNLESS OTHERWISE SPECIFIED: ALLGEMEINTOLERANZEN p.p. ISO 8015 p.p. ISO 2768 - mH -E DIN 16901 - 140	APVD	G.FELDMEIER	06-OCT-97				
	PRODUCT SPEC PRODUKTSPEZ.	VG 96933		SIZE	CAGE CODE	DRAWING NO ZEICHNUNGS-NR.	RESTRICTED TO NUR FUER
	APPLICATION SPEC VERARBEITUNGSSPEZ.	VG 96933		A4	00779	C-726348	-
ANGLES / WINKEL ±-	WEIGHT GEWICHT	-		CUSTOMER DRAWING / KUNDENZEICHNUNG			MASSSTAB NTS
					BLATT	1 OF VON 1	B4