



Chipsmall Limited consists of a professional team with an average of over 10 year of expertise in the distribution of electronic components. Based in Hongkong, we have already established firm and mutual-benefit business relationships with customers from,Europe,America and south Asia,supplying obsolete and hard-to-find components to meet their specific needs.

With the principle of “Quality Parts,Customers Priority,Honest Operation,and Considerate Service”,our business mainly focus on the distribution of electronic components. Line cards we deal with include Microchip,ALPS,ROHM,Xilinx,Pulse,ON,Everlight and Freescale. Main products comprise IC,Modules,Potentiometer,IC Socket,Relay,Connector.Our parts cover such applications as commercial,industrial, and automotives areas.

We are looking forward to setting up business relationship with you and hope to provide you with the best service and solution. Let us make a better world for our industry!



Contact us

Tel: +86-755-8981 8866 Fax: +86-755-8427 6832

Email & Skype: info@chipsmall.com Web: www.chipsmall.com

Address: A1208, Overseas Decoration Building, #122 Zhenhua RD., Futian, Shenzhen, China



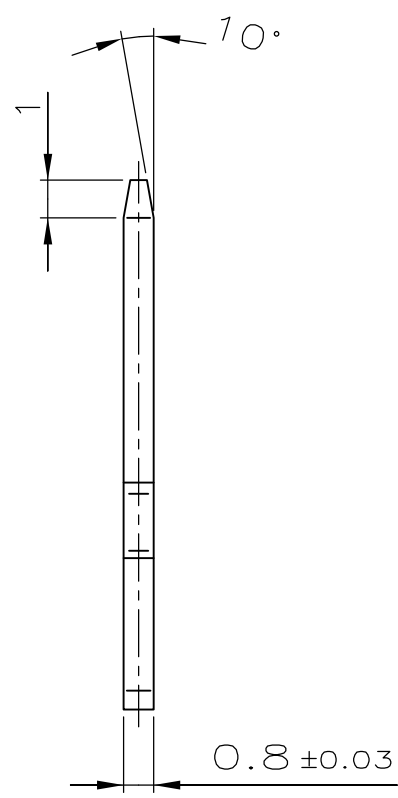
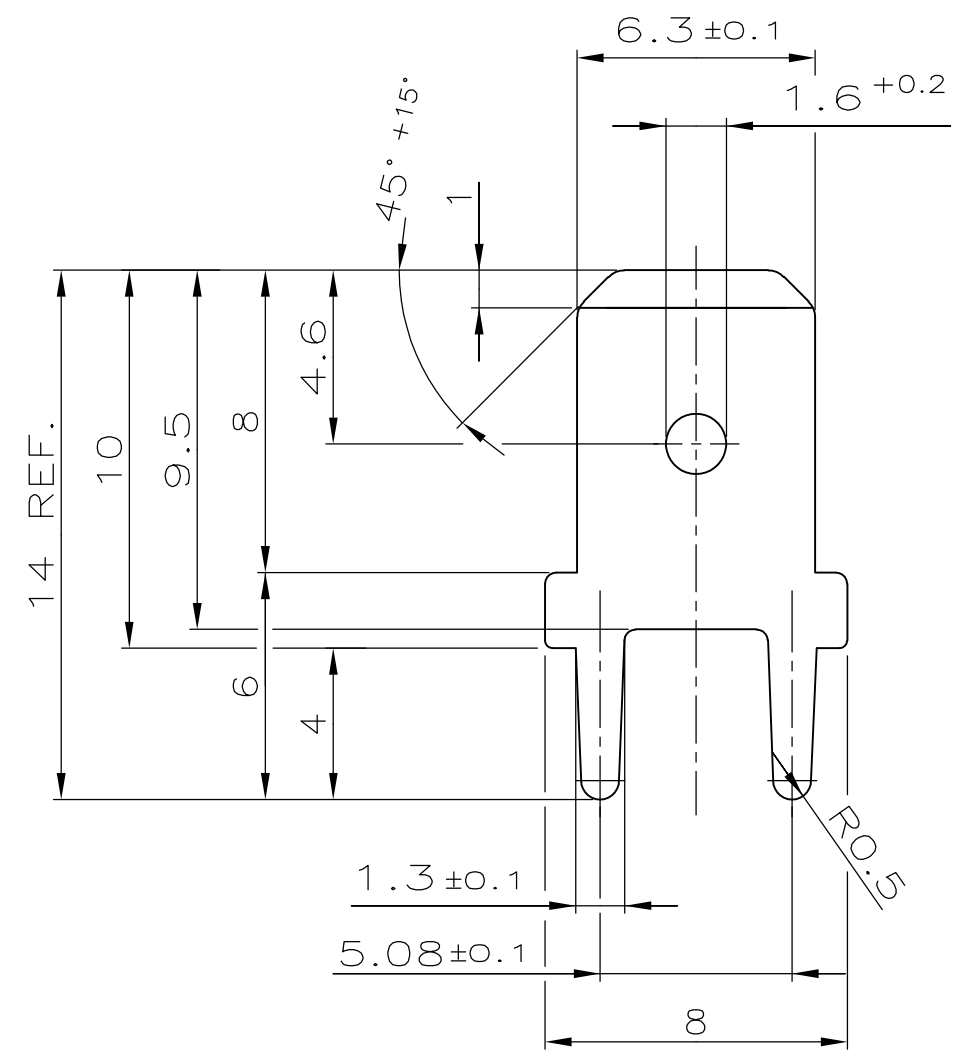
THIS DRAWING IS UNPUBLISHED.
 VERTRAULICHE UNVERÖFFENTLICHTE ZEICHNUNG

RELEASED FOR PUBLICATION
 FREI FUER VERÖFFENTLICHUNG

ALL RIGHTS RESERVED.
 ALLE RECHTE VORBEHALTEN

MATED WITH:
 PASSEND ZU:
 DIN 46247

| | | | | | | | |
|--------------------------|-----------|-------------------------|-----|-----------------------------|-----------|-----|------|
| LOC A1 | DIST — | REVISIONS ÄNDERUNGEN | | | DATE | DWN | APVD |
| PROJECT NR.; E97-9621 | | P | LTR | DESCRIPTION BESCHREIBUNG | 11OCT2012 | PKS | RRP |
| | | G | | ECR-12-017741 | | | |



- ① MIN. 4–5 μm Sn OVER MIN. 2 μm Ni
 - ② PACKING: PACKED INTO CARDBOARD BOX
 - ③ RECOMMENDED DIA. FOR PCB: Ø1.4 -0.1
-
- ① MIN. 4–5 μm Sn ÜBER MIN. 2 μm Ni
 - ② VERPACKUNG: IN KARTON VERPACKT
 - ③ EMPFOHLENE LEITERPLATTENBOHRUNG: Ø1.4 -0.1

| | | | |
|---|--------------------------|-----------------------|----------|
| 1000 | 1-726386-2 | ① | CuZn |
| 10000 | 726386-2 | ① | CuZn |
| — | 726386-1 | PLAIN BLANK | CuZn |
| ② PACKING UNIT VERPACKUNGSEINHEIT | ORDER NO. BESTELL-NR. | SURFACE OBERFLÄCHE | MATERIAL |
| | | COLOUR/FARBE | |

| | | | | | | | |
|--|---|--|-----------|--|------------------------------|----------------|---------------------------|
| THIS DRAWING IS A CONTROLLED DOCUMENT. DIESE ZEICHNUNG IST EIN KONTROLLIERTES DOKUMENT. | | DWN RICHTER | 01-DEC-86 | STE TE Connectivity | | | |
| DIMENSIONS: DIMENSIONEN mm | | CHK | — | | | | |
| TOLERANCES UNLESS OTHERWISE SPECIFIED: ALLGEMEINTOLERANZEN | | APVD | — | NAME | | | |
| 0 PLC ± — | | PRODUCT SPEC PRODUKTSPEZ. | | FASTON TAB 6.3 x 0.8 FLACHSTECKER 6.3 x 0.8 | | | |
| 1 PLC ± 0.2 | | ACCORDING TO DIN 46244 | | SIZE | | | |
| 2 PLC ± — | | APPLICATION SPEC VERARBEITUNGSSPEZ. | | CAGE CODE | DRAWING NO ZEICHNUNGS-NR. | | RESTRICTED TO NUR FUER |
| 3 PLC ± — | | — | | — | A300779 | | — |
| 4 PLC ± — | | — | | WEIGHT GEWICHT | G-726386 | | — |
| ANGLES / WINKEL ± 2° | | — | | CUSTOMER DRAWING/KUNDENZEICHNUNG | | | |
| MATERIAL SEE TABLE SIEHE TABELLE | FINISH/OBERFLÄCHE/FARBE SEE TABLE SIEHE TABELLE | — | | SCALE MASSSTAB | 5:1 | SHEET BLATT | 1 OF 1 VON 1 |
| | | | | | | REV | G |