



Chipsmall Limited consists of a professional team with an average of over 10 year of expertise in the distribution of electronic components. Based in Hongkong, we have already established firm and mutual-benefit business relationships with customers from,Europe,America and south Asia,supplying obsolete and hard-to-find components to meet their specific needs.

With the principle of "Quality Parts,Customers Priority,Honest Operation,and Considerate Service",our business mainly focus on the distribution of electronic components. Line cards we deal with include Microchip,ALPS,ROHM,Xilinx,Pulse,ON,Everlight and Freescale. Main products comprise IC,Modules,Potentiometer,IC Socket,Relay,Connector.Our parts cover such applications as commercial,industrial, and automotives areas.

We are looking forward to setting up business relationship with you and hope to provide you with the best service and solution. Let us make a better world for our industry!



Contact us

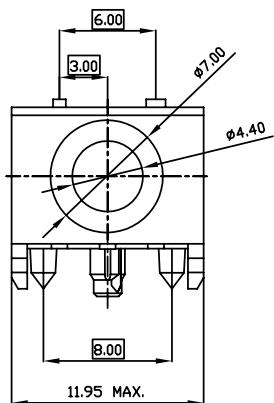
Tel: +86-755-8981 8866 Fax: +86-755-8427 6832

Email & Skype: info@chipsmall.com Web: www.chipsmall.com

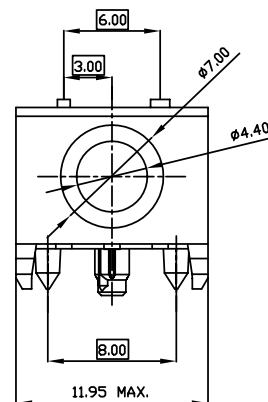
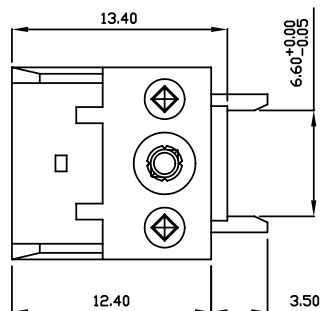
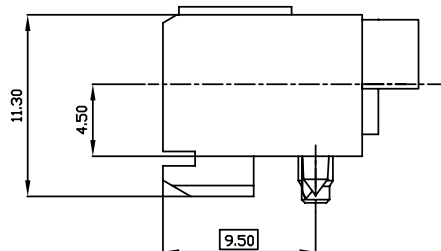
Address: A1208, Overseas Decoration Building, #122 Zhenhua RD., Futian, Shenzhen, China



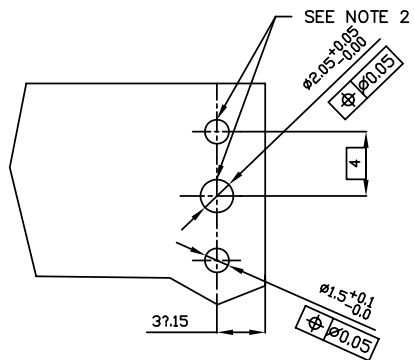
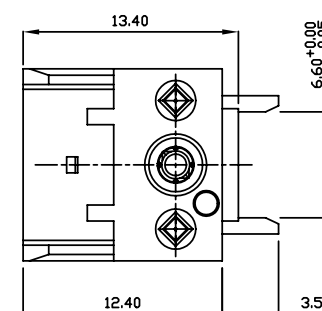
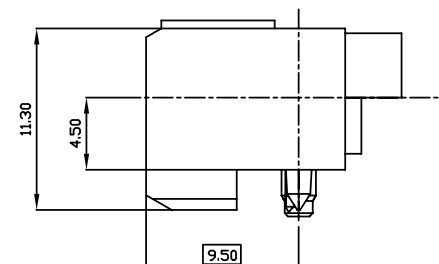
PRODUCT NUMBER	STYLE
72718-001ALF	STYLE A
72718-002ALF	STYLE B STRONG HOUSING



STYLE A
72718-001ALF



STYLE B
72718-002ALF



RECOMMENDED HOLE PATTERN,
COMPONENT SIDE. NOTE 1

NOTES:

1. PCB LAYOUT IS SHOWN FOR HOUSING REQUIREMENTS ONLY.
2. INDICATED HOLES ARE TO BE UNPLATED
3. THIS PRODUCT WITH "LF" SUFFIX MEETS EUROPEAN UNION DIRECTIVES AND OTHER COUNTRY REGULATIONS AS DESCRIBED IN GS -22-008.
4. THE HOUSING WILL WITHSTAND EXPOSURE TO 260 DEGREE PEAK TEMPERATURE FOR 20 SECONDS IN WAVE SOLDER APPLICATION WITH A 1.6 MM MINIMUM THICK CIRCUIT BOARD.

rev	ecn no	dr	date
A	V21618	CGD	10/10/02
B	V20167	GNV	021015
C	D05-0372	CLU	051007
D	N10-0381	A.ZH	11/09/10

www.fciconnect.com		surface ISO 1302	tolerance ISO 406 ISO 1101	projection	MM
		TOLERANCES UNLESS OTHERWISE SPECIFIED			
Dr	C.DAILY	10/10/02	ANGULAR	size	A4
Eng	M.GRAY	10/10/02	LINEAR	Scale	1:1
Chr	M.GRAY	10/10/02	0° ±2.0°	ECN	N10-0381
Appr	M.GRAY	10/10/02	Product family	METRAL	Spec ref
		title		dwg no	Rev.
		METRAL R/A COAX RECEPTACLE HOUSING		72718	D
		catalog no		CUSTOMER	sheet 1 of 1



Copyright FCI.