



Chipsmall Limited consists of a professional team with an average of over 10 year of expertise in the distribution of electronic components. Based in Hongkong, we have already established firm and mutual-benefit business relationships with customers from,Europe,America and south Asia,supplying obsolete and hard-to-find components to meet their specific needs.

With the principle of “Quality Parts,Customers Priority,Honest Operation,and Considerate Service”,our business mainly focus on the distribution of electronic components. Line cards we deal with include Microchip,ALPS,ROHM,Xilinx,Pulse,ON,Everlight and Freescale. Main products comprise IC,Modules,Potentiometer,IC Socket,Relay,Connector.Our parts cover such applications as commercial,industrial, and automotives areas.

We are looking forward to setting up business relationship with you and hope to provide you with the best service and solution. Let us make a better world for our industry!



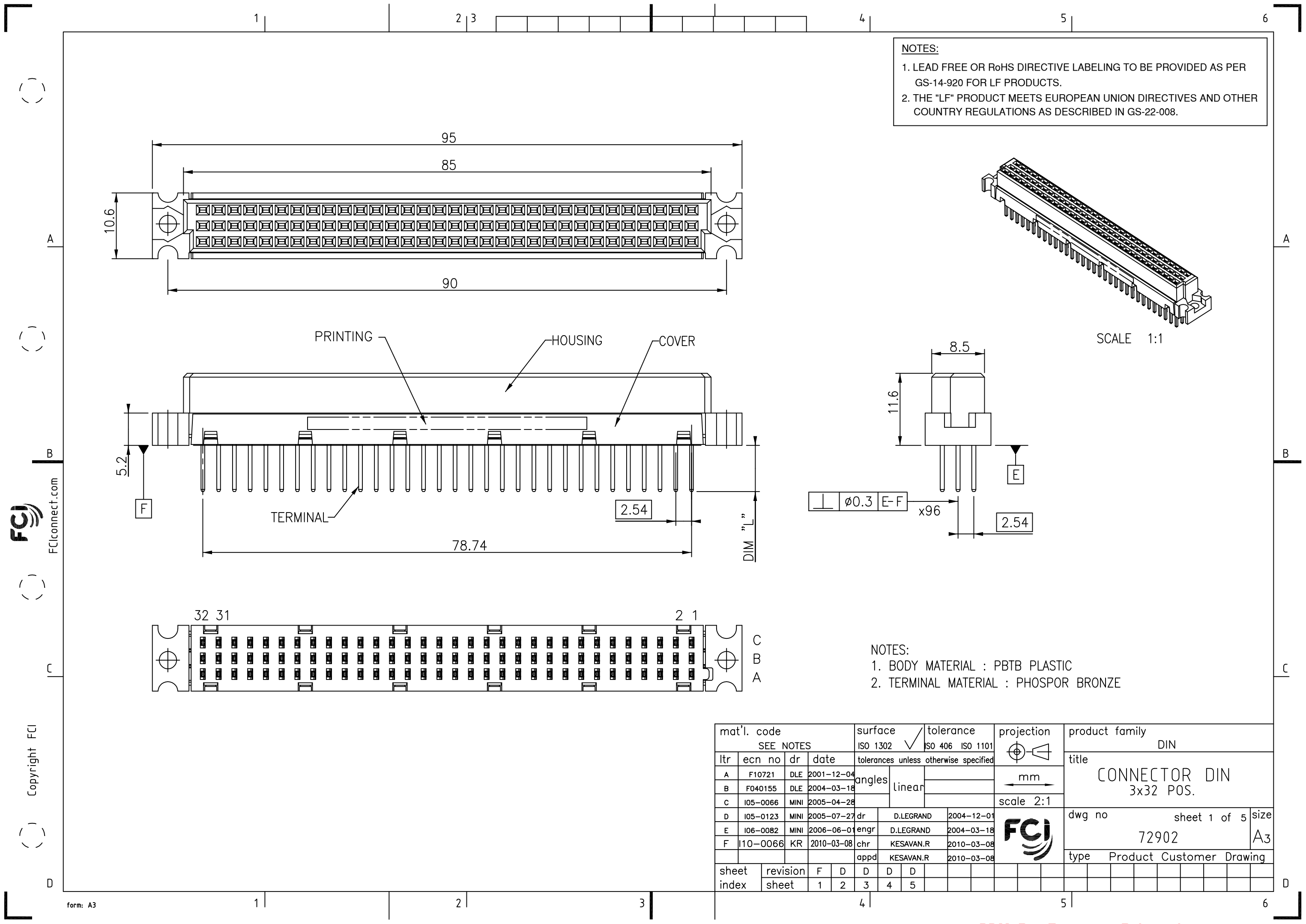
Contact us

Tel: +86-755-8981 8866 Fax: +86-755-8427 6832

Email & Skype: info@chipsmall.com Web: www.chipsmall.com

Address: A1208, Overseas Decoration Building, #122 Zhenhua RD., Futian, Shenzhen, China





NOTES:

1. LEAD FREE OR RoHS DIRECTIVE LABELING TO BE PROVIDED AS PER GS-14-920 FOR LF PRODUCTS.
2. THE "LF" PRODUCT MEETS EUROPEAN UNION DIRECTIVES AND OTHER COUNTRY REGULATIONS AS DESCRIBED IN GS-22-008.

NOTES:

1. BODY MATERIAL : PBTB PLASTIC
2. TERMINAL MATERIAL : PHOSPOR BRONZE

mat'l. code		surface		tolerance		projection		product family	
SEE NOTES		ISO 1302		ISO 406 ISO 1101		mm		DIN	
ltr	ecn no	dr	date	tolerances unless otherwise specified		mm		title	
A	F10721	DLE	2001-12-04	angles	linear	scale 2:1		CONNECTOR DIN	
B	F040155	DLE	2004-03-18					3x32 POS.	
C	I05-0066	MINI	2005-04-28					dwg no	
D	I05-0123	MINI	2005-07-27	dr	D.LEGRAND	2004-12-01	sheet 1 of 5		size
E	I06-0082	MINI	2006-06-01	enr	D.LEGRAND	2004-03-18	72902		A3
F	I10-0066	KR	2010-03-08	chr	KESAVAN.R	2010-03-08	Product Customer Drawing		
sheet index		revision sheet	F	D	D	D			
			1	2	3	4			

FCI
FCIconnect.com

Copyright FCI

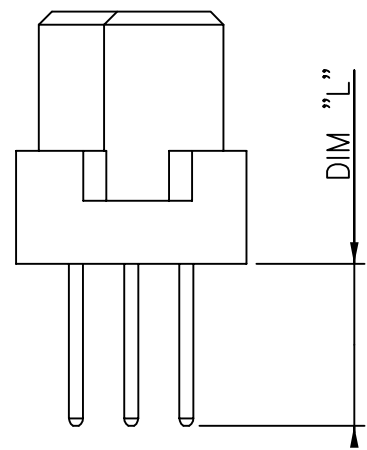


FIGURE 1

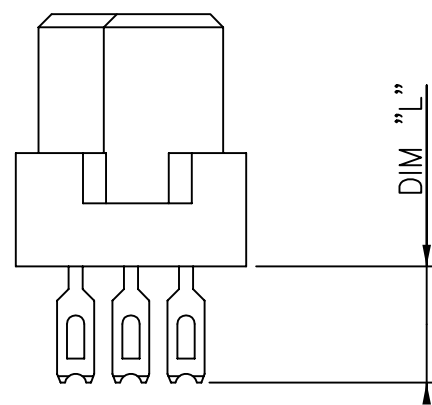


FIGURE 2

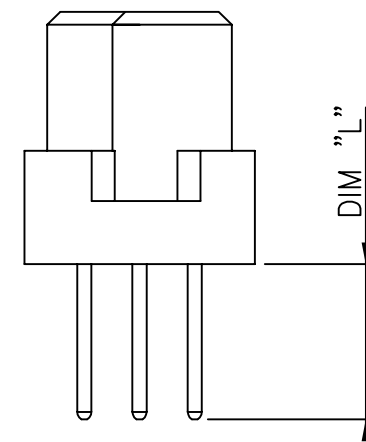


FIGURE 3

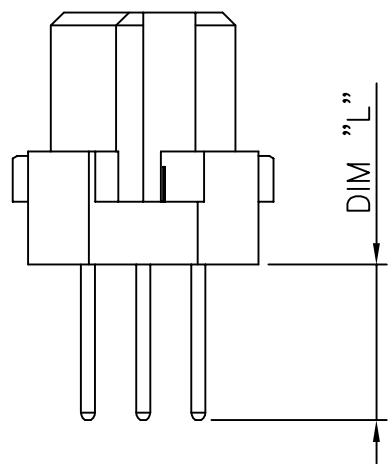


FIGURE 4

NOTES:
SLOT PROVIDED ON THE MATING SIDE IN FIGURE 4 IS OPTIONAL

NOTES:
1. LEAD FREE OR RoHS DIRECTIVE LABELING TO BE PROVIDED AS PER GS-14-920 FOR LF PRODUCTS.
2. THE "LF" PRODUCT MEETS EUROPEAN UNION DIRECTIVES AND OTHER COUNTRY REGULATIONS AS DESCRIBED IN GS-22-008.

mat'l. code				surface		tolerance		projection		product family			
-				ISO 1302		ISO 406 ISO 1101				DIN			
tolerances unless otherwise specified				angles		linear		mm		title			
A F10721 DLE 2001-12-04								scale 2:1		CONNECTOR DIN			
B 105-0066 MINI 2004-26-05										3x32 POS.			
C 105-0123 MINI 2005-07-27										dwg no			
D 106-0082 MINI 2006-06-01				dr		D.LEGRAND 2001-12-04				sheet 2 of 5		size	
				enr		J.F.NOTTEAU 2001-12-04				72902		A3	
				chr		RAKHEE GEORGE 2006-06-01				type Product Customer Drawing			
				appd		RAKHEE GEORGE 2006-06-01							
sheet index		revision sheet											



FCIconnect.com

Copyright FCI

PRODUCT NUMBER	CUSTOMER P/N	PIN LOADED IN POSITION																																DIM "L" ±0.5 If no spec	REMARKS	PLATING	COMMENT		
		ROW	1	2	3	4	5	6	7	8	9	10	11	12	13	14	15	16	17	18	19	20	21	22	23	24	25	26	27	28	29	30	31					32	
72902-252	RNV 301 204	A	X	X	X	X	X	X	X	X	X	X	X	X	X	X	X	X	X	X	X	X	X	X	X	X	X	X	X	X	X	X	X	X	X	13.5	FIG 1	CONTACT AREA: 2µm Au TERMINATION: GOLD FLASH Ni ALL OVER	
72902-252LF		B	X	X	X	X	X	X	X	X	X	X	X	X	X	X	X	X	X	X	X	X	X	X	X	X	X	X	X	X	X	X	X	X	X	X	13.5	FIG 1	CONTACT AREA: 2µm Au TERMINATION: GOLD FLASH Ni ALL OVER
72902-253	RNV 301 403	A	X	X	X	X	X	X	X	X	X	X	X	X	X	X	X	X	X	X	X	X	X	X	X	X	X	X	X	X	X	X	X	X	X	13.5	FIG 1	CONTACT AREA: 2µm Au TERMINATION: GOLD FLASH Ni ALL OVER	
72902-253LF		B	X	X	X	X	X	X	X	X	X	X	X	X	X	X	X	X	X	X	X	X	X	X	X	X	X	X	X	X	X	X	X	X	X	X	13.5	FIG 1	CONTACT AREA: 2µm Au TERMINATION: GOLD FLASH Ni ALL OVER
72902-254	RNV 301 305	A	X	X	X	X	X	X	X	X	X	X	X	X	X	X	X	X	X	X	X	X	X	X	X	X	X	X	X	X	X	X	X	X	X	13.5	FIG 1	CONTACT AREA: 2µm Au TERMINATION: GOLD FLASH Ni ALL OVER	
72902-254LF		B	X	X	X	X	X	X	X	X	X	X	X	X	X	X	X	X	X	X	X	X	X	X	X	X	X	X	X	X	X	X	X	X	X	X	13.5	FIG 1	CONTACT AREA: 2µm Au TERMINATION: GOLD FLASH Ni ALL OVER
72902-255	RNV 301 503	A	X	X	X	X	X	X	X	X	X	X	X	X	X	X	X	X	X	X	X	X	X	X	X	X	X	X	X	X	X	X	X	X	X	13.5	FIG 1	CONTACT AREA: 2µm Au TERMINATION: GOLD FLASH Ni ALL OVER	
72902-255LF		B	X	X	X	X	X	X	X	X	X	X	X	X	X	X	X	X	X	X	X	X	X	X	X	X	X	X	X	X	X	X	X	X	X	X	13.5	FIG 1	CONTACT AREA: 2µm Au TERMINATION: GOLD FLASH Ni ALL OVER
72902-262	RNV 301 202/2	A	X	X	X	X	X	X	X	X	X	X	X	X	X	X	X	X	X	X	X	X	X	X	X	X	X	X	X	X	X	X	X	X	X	7.5	FIG 1	CONTACT AREA: 2µm Au TERMINATION: GOLD FLASH Ni ALL OVER	
72902-262LF		B	X	X	X	X	X	X	X	X	X	X	X	X	X	X	X	X	X	X	X	X	X	X	X	X	X	X	X	X	X	X	X	X	X	X	7.5	FIG 1	CONTACT AREA: 2µm Au TERMINATION: GOLD FLASH Ni ALL OVER
72902-263	RNV 301 401/2	A	X	X	X	X	X	X	X	X	X	X	X	X	X	X	X	X	X	X	X	X	X	X	X	X	X	X	X	X	X	X	X	X	X	7.5	FIG 1	CONTACT AREA: 2µm Au TERMINATION: GOLD FLASH Ni ALL OVER	
72902-263LF		B	X	X	X	X	X	X	X	X	X	X	X	X	X	X	X	X	X	X	X	X	X	X	X	X	X	X	X	X	X	X	X	X	X	X	7.5	FIG 1	CONTACT AREA: 2µm Au TERMINATION: GOLD FLASH Ni ALL OVER
72902-264	RNV 301 302/2	A	X	X	X	X	X	X	X	X	X	X	X	X	X	X	X	X	X	X	X	X	X	X	X	X	X	X	X	X	X	X	X	X	X	7.5	FIG 1	CONTACT AREA: 2µm Au TERMINATION: GOLD FLASH Ni ALL OVER	
72902-264LF		B	X	X	X	X	X	X	X	X	X	X	X	X	X	X	X	X	X	X	X	X	X	X	X	X	X	X	X	X	X	X	X	X	X	X	7.5	FIG 1	CONTACT AREA: 2µm Au TERMINATION: GOLD FLASH Ni ALL OVER
72902-265	RNV 301 501/2	A	X	X	X	X	X	X	X	X	X	X	X	X	X	X	X	X	X	X	X	X	X	X	X	X	X	X	X	X	X	X	X	X	X	7.5	FIG 1	CONTACT AREA: 2µm Au TERMINATION: GOLD FLASH Ni ALL OVER	
72902-265LF		B	X	X	X	X	X	X	X	X	X	X	X	X	X	X	X	X	X	X	X	X	X	X	X	X	X	X	X	X	X	X	X	X	X	X	7.5	FIG 1	CONTACT AREA: 2µm Au TERMINATION: GOLD FLASH Ni ALL OVER
72902-272	RNV 301 202/3	A	X	X	X	X	X	X	X	X	X	X	X	X	X	X	X	X	X	X	X	X	X	X	X	X	X	X	X	X	X	X	X	X	X	3.3 ⁰ _{-0.6}	FIG 1	CONTACT AREA: 2µm Au TERMINATION: GOLD FLASH Ni ALL OVER	
72902-272LF		B	X	X	X	X	X	X	X	X	X	X	X	X	X	X	X	X	X	X	X	X	X	X	X	X	X	X	X	X	X	X	X	X	X	X	3.3 ⁰ _{-0.6}	FIG 1	CONTACT AREA: 2µm Au TERMINATION: GOLD FLASH Ni ALL OVER
72902-274	RNV 301 302/3	A	X	X	X	X	X	X	X	X	X	X	X	X	X	X	X	X	X	X	X	X	X	X	X	X	X	X	X	X	X	X	X	X	X	3.3 ⁰ _{-0.6}	FIG 1	CONTACT AREA: 2µm Au TERMINATION: GOLD FLASH Ni ALL OVER	OBSOLETE
72902-274LF		B	X	X	X	X	X	X	X	X	X	X	X	X	X	X	X	X	X	X	X	X	X	X	X	X	X	X	X	X	X	X	X	X	X	X	3.3 ⁰ _{-0.6}	FIG 1	CONTACT AREA: 2µm Au TERMINATION: GOLD FLASH Ni ALL OVER
72902-275	RNV 301 501/3	A	X	X	X	X	X	X	X	X	X	X	X	X	X	X	X	X	X	X	X	X	X	X	X	X	X	X	X	X	X	X	X	X	X	3.3 ⁰ _{-0.6}	FIG 3	CONTACT AREA: 2µm Au TERMINATION: GOLD FLASH Ni ALL OVER	
72902-275LF		B	X	X	X	X	X	X	X	X	X	X	X	X	X	X	X	X	X	X	X	X	X	X	X	X	X	X	X	X	X	X	X	X	X	X	3.3 ⁰ _{-0.6}	FIG 3	CONTACT AREA: 2µm Au TERMINATION: GOLD FLASH Ni ALL OVER
72902-279	RNV 301 501/4	A	X	X	X	X	X	X	X	X	X	X	X	X	X	X	X	X	X	X	X	X	X	X	X	X	X	X	X	X	X	X	X	X	X	3.3 ⁰ _{-0.6}	FIG 3	CONTACT AREA: 2µm Au TERMINATION: GOLD FLASH Ni ALL OVER	OBSOLETE
72902-279LF		B	X	X	X	X	X	X	X	X	X	X	X	X	X	X	X	X	X	X	X	X	X	X	X	X	X	X	X	X	X	X	X	X	X	X	3.3 ⁰ _{-0.6}	FIG 3	CONTACT AREA: 2µm Au TERMINATION: GOLD FLASH Ni ALL OVER



NOTES:
 1. LEAD FREE OR RoHS DIRECTIVE LABELING TO BE PROVIDED AS PER GS-14-920 FOR LF PRODUCTS.
 2. THE "LF" PRODUCT MEETS EUROPEAN UNION DIRECTIVES AND OTHER COUNTRY REGULATIONS AS DESCRIBED IN GS-22-008.

mat'l. code		surface		tolerance		projection		product family	
-		ISO 1302		ISO 406 ISO 1101		mm		DIN	
ltr		ecn no		date		tolerances unless otherwise specified		title	
A		F10721		DLE 2001-12-04		angles		CONNECTOR DIN	
B		F040155		DLE 2004-03-18		linear		3x32 POS.	
C		I05-0123		MINI 2005-07-27				scale 2:1	
D		I06-0082		MINI 2006-06-01		D.LEGRAND		dwg no	
						2001-12-04		sheet 4 of 5	
						J.F.NOTTEAU		72902	
						2001-12-04		A3	
						RAKHEE GEORGE		type	
						2006-06-01		Product Customer Drawing	
						RAKHEE GEORGE			
sheet index		revision sheet							

Copyright FCI

PRODUCT NUMBER	CUSTOMER P/N	PIN LOADED IN POSITION																																DIM "L" ±0.5 If no spec	REMARKS	PLATING		
		ROW		1	3	5	7	9	11	13	15	17	19	21	23	25	27	29	31	2	4	6	8	10	12	14	16	18	20	22	24	26	28				30	32
		A	B	X	X	X	X	X	X	X	X	X	X	X	X	X	X	X	X	X	X	X	X	X	X	X	X	X	X	X	X	X	X				X	X
72902-282 72902-282LF	RNV 301 701	A	X	X	X	X	X	X	X	X	X	X	X	X	X	X	X	X	X	X	X	X	X	X	X	X	X	X	X	X	X	X	X	X	3.3 ⁰ _{-0.6}	FIG 1	CONTACT AREA: 2µm Au . TERMINATION: LEADED PRODUCTS- SnPb 6-10µm, LEAD FREE PRODUCTS- Sn (MATTE TIN), Ni ALL OVER.	
72902-284 72902-284LF	RNV 301 702	A	X	X	X	X	X	X	X	X	X	X	X	X	X	X	X	X	X	X	X	X	X	X	X	X	X	X	X	X	X	X	X	X	3.3 ⁰ _{-0.6}	FIG 1	CONTACT AREA: 2µm Au . TERMINATION: LEADED PRODUCTS- SnPb 6-10µm, LEAD FREE PRODUCTS- Sn (MATTE TIN), Ni ALL OVER.	
72902-296 72902-296LF	102 2056	A			X																								X						5	FIG 2	CONTACT AREA: 2µm Au . TERMINATION: LEADED PRODUCTS- SnPb 6-10µm, LEAD FREE PRODUCTS- Sn (MATTE TIN), Ni ALL OVER.	
72902-354LF		A	X	X	X	X	X	X	X	X	X	X	X	X	X	X	X	X	X	X	X	X	X	X	X	X	X	X	X	X	X	X	X	X	13.5	FIG 1	CONTACT AREA: 2µm Au TERMINATION: GOLD FLASH Ni ALL OVER	

NOTES:
 1. LEAD FREE OR RoHS DIRECTIVE LABELING TO BE PROVIDED AS PER GS-14-920 FOR LF PRODUCTS.
 2. THE "LF" PRODUCT MEETS EUROPEAN UNION DIRECTIVES AND OTHER COUNTRY REGULATIONS AS DESCRIBED IN GS-22-008.

mat'l. code		surface	tolerance	projection	product family		
-		ISO 1302 ✓	ISO 406 ISO 1101		DIN		
ltr	ecn no	dr	date	tolerances unless otherwise specified		title	
A	F10721	DLE	2001-12-04	angles	linear		CONNECTOR DIN
B	105-0123	MINI	2005-07-27			3x32 POS.	
C	106-0082	MINI	2006-06-01			dwg no	
D	110-0066	KR	2010-03-08	D.LEGRAND 2001-12-04			sheet 5 of 5
				engr	J.F.NOTTEAU	2001-12-04	size
				chr	KESAVAN.R	2010-03-08	A3
				appd	KESAVAN.R	2010-03-08	type
sheet index		revision sheet					Product Customer Drawing



Copyright FCI