



Chipsmall Limited consists of a professional team with an average of over 10 year of expertise in the distribution of electronic components. Based in Hongkong, we have already established firm and mutual-benefit business relationships with customers from,Europe,America and south Asia,supplying obsolete and hard-to-find components to meet their specific needs.

With the principle of "Quality Parts,Customers Priority,Honest Operation,and Considerate Service",our business mainly focus on the distribution of electronic components. Line cards we deal with include Microchip,ALPS,ROHM,Xilinx,Pulse,ON,Everlight and Freescale. Main products comprise IC,Modules,Potentiometer,IC Socket,Relay,Connector.Our parts cover such applications as commercial,industrial, and automotives areas.

We are looking forward to setting up business relationship with you and hope to provide you with the best service and solution. Let us make a better world for our industry!



Contact us

Tel: +86-755-8981 8866 Fax: +86-755-8427 6832

Email & Skype: info@chipsmall.com Web: www.chipsmall.com

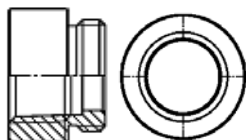
Address: A1208, Overseas Decoration Building, #122 Zhenhua RD., Futian, Shenzhen, China



Cable Entry Accessories

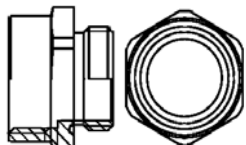
Adapters from M to NPT

Male Thread	Female Thread	Part Number
M20	1/2"	73 00 000 5322
M25	1/2"	73 00 000 5323
M25	3/4"	73 00 000 5319
M32	3/4"	73 00 000 5324
M32	1"	73 00 000 5320
M32	1 1/4"	73 00 000 5321
M40	1 1/4"	73 00 000 5325



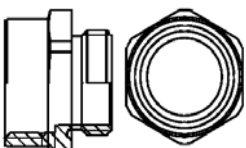
Adapters from M to PG

Male Thread	Female Thread	Part Number
M20	PG11	73 00 000 5326
M25	PG16	73 00 000 5327
M25	PG21	73 00 000 5328
M32	PG29	73 00 000 5329
M40	PG29	73 00 000 5330
M50	PG36	73 00 000 5331
M50	PG42	73 00 000 5332



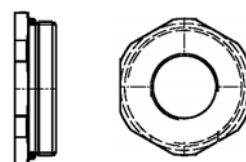
Adapters from PG to M

Male Thread	Female Thread	Part Number
PG13.5	M20	73 00 000 5333
PG16	M20	73 00 000 5334
PG16	M25	73 00 000 5335
PG21	M25	73 00 000 5336
PG21	M32	73 00 000 5337
PG29	M40	73 00 000 5338
PG36	M50	73 00 000 5339



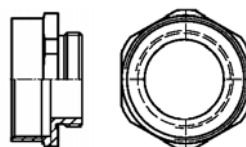
Adapters from PG to NPT

Male Thread	Female Thread	Part Number
PG11	3/8"	73 00 000 5308
PG11	1/2"	73 00 000 5310
PG13.5	1/2"	73 00 000 5311
PG16	1/2"	73 00 000 5312
PG21	1/2"	73 00 000 5313
PG21	3/4"	73 00 000 5314
PG29	1"	73 00 000 5315
PG29	1 1/4"	73 00 000 5316
PG36	1 1/4"	73 00 000 5317
PG42	1 1/2"	09 00 000 5046



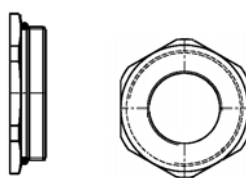
Increasesers - Metric

Male Thread	Female Thread	Part Number
M20	M25	73 00 000 5340
M25	M32	73 00 000 5341
M32	M40	73 00 000 5342
M40	M50	73 00 000 5344
M50	M63	73 00 000 5345



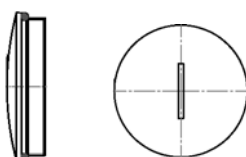
Reducers - Metric

Male Thread	Female Thread	Part Number
M25	M20	73 00 000 5346
M32	M25	73 00 000 5347
M40	M32	73 00 000 5348
M50	M40	73 00 000 5349



Metric Threaded Plugs

Male thread	Part Number
M20	73 00 000 5350
M25	73 00 000 5351
M32	73 00 000 5352
M40	73 00 000 5353
M50	73 00 000 5354
M63	73 00 000 5355



NPT Hood and Housings

HARTING offers hoods and housings with the NPT adapters pre-installed. To change a PG Hood or Housing to an NPT thread, change the 5th digit to a "5". For example, 09 30 016 0520 (PG21) becomes 09 30 516 0520 (3/4" NPT). See the accompanying chart for conversion details.

PG 11	convert to	3/8" NPT
PG 13.5	convert to	1/2" NPT
PG 16	convert to	1/2" NPT
PG 21	convert to	3/4" NPT
PG 29	convert to	1" NPT
PG 36	convert to	1 1/4" NPT