



Chipsmall Limited consists of a professional team with an average of over 10 year of expertise in the distribution of electronic components. Based in Hongkong, we have already established firm and mutual-benefit business relationships with customers from,Europe,America and south Asia,supplying obsolete and hard-to-find components to meet their specific needs.

With the principle of “Quality Parts,Customers Priority,Honest Operation,and Considerate Service”,our business mainly focus on the distribution of electronic components. Line cards we deal with include Microchip,ALPS,ROHM,Xilinx,Pulse,ON,Everlight and Freescale. Main products comprise IC,Modules,Potentiometer,IC Socket,Relay,Connector.Our parts cover such applications as commercial,industrial, and automotives areas.

We are looking forward to setting up business relationship with you and hope to provide you with the best service and solution. Let us make a better world for our industry!



Contact us

Tel: +86-755-8981 8866 Fax: +86-755-8427 6832

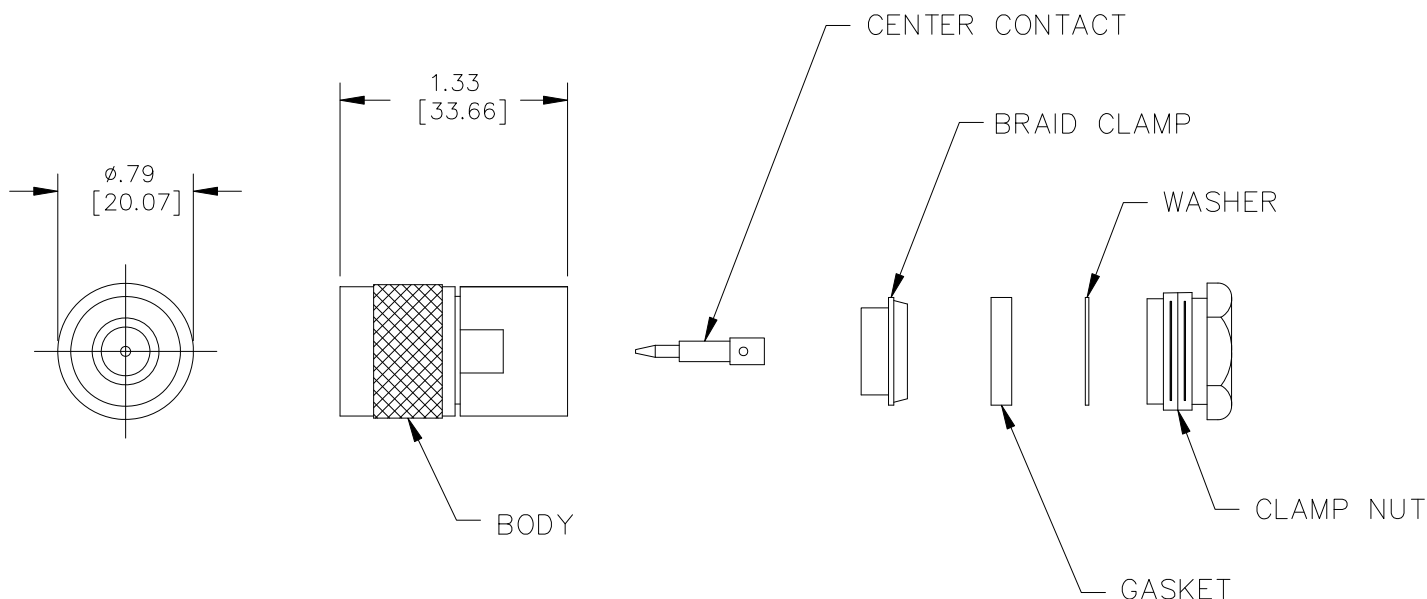
Email & Skype: info@chipsmall.com Web: www.chipsmall.com

Address: A1208, Overseas Decoration Building, #122 Zhenhua RD., Futian, Shenzhen, China



Model 73062

N Type Plug, 50 Ohm, Clamp Type, RG8, 9, 144, 165, 213, 214, 216, 225



Model 73062
N Type Plug, 50 Ohm, Clamp Type,
RG8, 9, 144, 165, 213, 214, 216, 225

Features

- DC – 11GHz bandwidth.
- Connectors are precision machined.
- Connector accepts cable types RG/U: 8, 9, 144, 165, 213, 214, 216, 225

Materials

Center Conductor, Male: Brass, Gold Plated
Connector Body: Brass, Nickel Plated
Insulator: PTFE

Specifications

Impedance:	50Ω
Frequency Range:	DC – 11GHz
Contact Resistance:	
Center Conductor:	≤1.0 mΩ
Outer Conductor:	≤0.2 mΩ
Insulation Resistance:	≥ 5000 MΩ
Operating Voltage:	1000V
	<i>For CE compliance, do not hold in hand when voltages exceed 33 Vrms / 70 Vdc.</i>
VSWR:	≤1.35
Number of Insertions:	500 cycles minimum

Ordering Information

Model: **73062**

USA: Sales: 800-490-2361
Technical Support: technicalsupport@pomonatest.com
Fax: 425-446-5844

Europe: 31-(0) 40 2675 150 International: 425-446-5500

Where to Buy: www.pomonaelectronics.com

All dimensions are in inches. Tolerances (except noted): .xx = ±.02" (.51 mm), .xxx = ±.005" (.127 mm). All specifications are to the latest revisions. Specifications are subject to change without notice. Registered trademarks are the property of their respective companies.

Model 73062

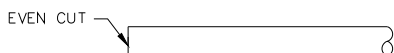
N Type Plug, 50 Ohm, Clamp Type, RG8, 9, 144, 165, 213, 214, 216, 225

Cable Types

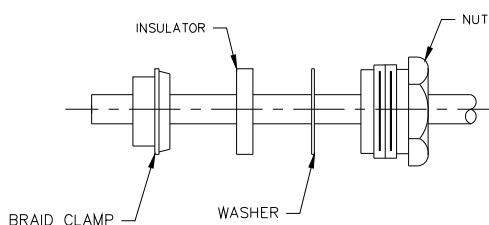
Connector Model #	Cable Groups
73062	RG8, 9, 144, 165, 213, 214, 216, 225

Cable Assembly Instructions

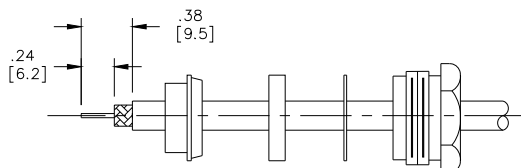
1. CUT CABLE END EVENLY AND PERPENDICULAR



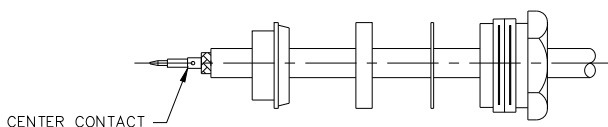
2. SLIDE NUT, WASHER, INSULATOR AND BRAID CLAMP OVER CABLE.



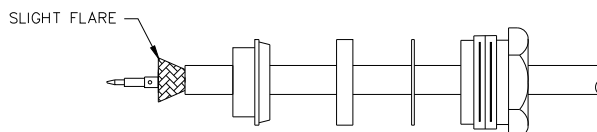
3. STRIP CABLE TO DIMENSIONS SHOWN.



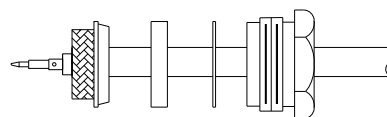
4. CRIMP CENTER CONTACT ONTO CENTER CONDUCTOR.



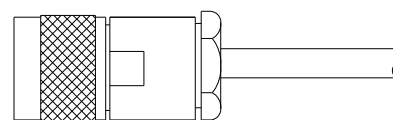
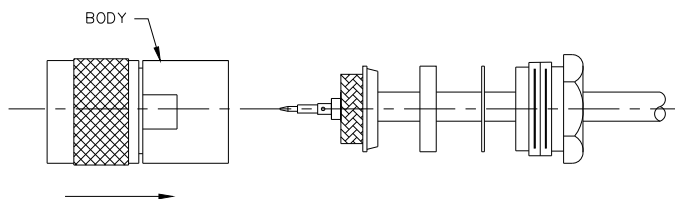
5. FLARE BRAD END SLIGHTLY.



6. SLIDE BRAID CLAMP FORWARD AND COMB BRAD OVER BRAID CLAMP.



7. SLIDE CONNECTOR BODY OVER CENTER CONDUCTOR, BRAID CLAMP, WASHER AND SCREW ON NUT.



USA: Sales: 800-490-2361
 Technical Support: technicalsupport@pomonatest.com
 Fax: 425-446-5844
Europe: 31-(0) 40 2675 150 **International:** 425-446-5500
Where to Buy: www.pomonaelectronics.com

All dimensions are in inches. Tolerances (except noted): .xx = ±.02" (.51 mm), .xxx = ±.005" (.127 mm). All specifications are to the latest revisions. Specifications are subject to change without notice. Registered trademarks are the property of their respective companies.