



Chipsmall Limited consists of a professional team with an average of over 10 year of expertise in the distribution of electronic components. Based in Hongkong, we have already established firm and mutual-benefit business relationships with customers from,Europe,America and south Asia,supplying obsolete and hard-to-find components to meet their specific needs.

With the principle of "Quality Parts,Customers Priority,Honest Operation,and Considerate Service",our business mainly focus on the distribution of electronic components. Line cards we deal with include Microchip,ALPS,ROHM,Xilinx,Pulse,ON,Everlight and Freescale. Main products comprise IC,Modules,Potentiometer,IC Socket,Relay,Connector.Our parts cover such applications as commercial,industrial, and automotives areas.

We are looking forward to setting up business relationship with you and hope to provide you with the best service and solution. Let us make a better world for our industry!



## Contact us

Tel: +86-755-8981 8866 Fax: +86-755-8427 6832

Email & Skype: info@chipsmall.com Web: www.chipsmall.com

Address: A1208, Overseas Decoration Building, #122 Zhenhua RD., Futian, Shenzhen, China



## Mixers Double Balanced

### Applications

- Wideband Down Converters
- Wideband Up Converters
- Balanced Modulators
- Bi-Phase Modulators
- Phase Detectors



### Features

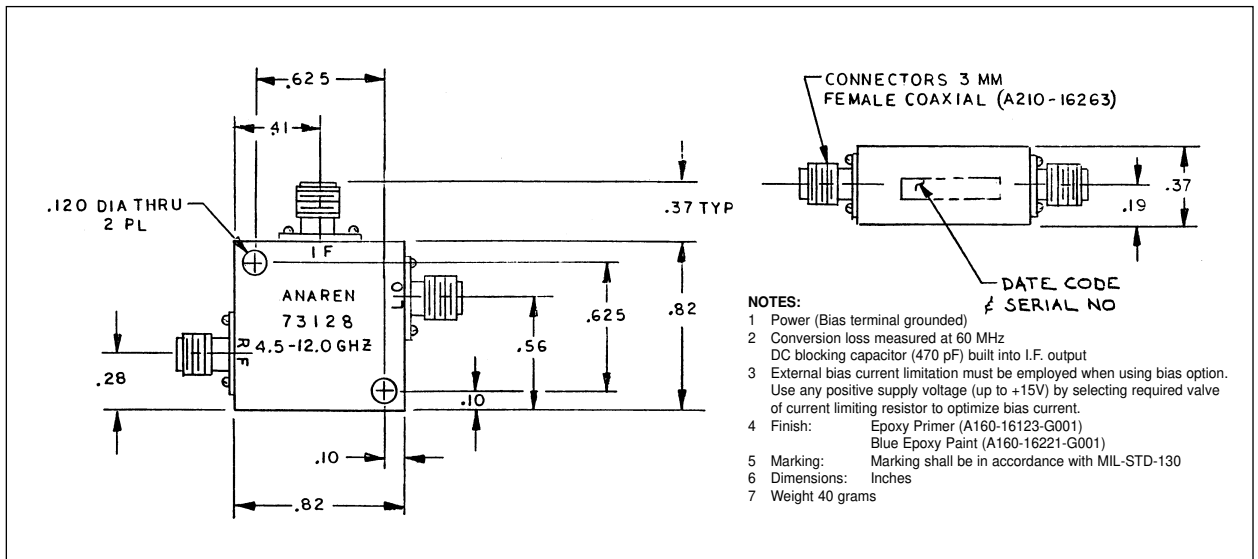
- Extremely Wide IF Bandwidth
- Good LO/RF Isolation
- Multi-Octave Performance
- Good Intercept Point
- Miniature Size
- Connectors Per MIL-C-39012

### Electrical Specifications

| Frequency<br>GHz             | Isolation <sub>LO-RF</sub><br>dB Min/Typ | Convers. Loss<br>dB Max/Typ | VSWR, <sub>RF</sub><br>Typ : 1 |
|------------------------------|--|-----------------------------|--------------------------------|
| 4.5 - 12.0                   | 15/23                                    | 9.0/8.0                     | 4.5                            |
| IF Freq. <sup>1</sup><br>MHz | RF Power <sup>2</sup><br>Input dBm       | LO Power<br>dBm Nominal     |                                |
| DC-4000                      | +4                                       | +12                         |                                |

**Notes:** Impedance: 50 ohms nominal. Meets MIL-E-5400 Class 3 requirements. Additional screening available for military and space applications. 1) Upper IF frequency is the -3 dB response point. 2) At 1dB Compression point **Electrical and Mechanical Specifications subject to change without notice.**

### Outline Drawing



Sales Desk USA: Voice: (800) 544-2414 Fax: (315) 432-9121  
Sales Desk Europe: Voice: (+44) 23 92 232392 Fax: (+44) 23 92 251369