



Chipsmall Limited consists of a professional team with an average of over 10 year of expertise in the distribution of electronic components. Based in Hongkong, we have already established firm and mutual-benefit business relationships with customers from,Europe,America and south Asia,supplying obsolete and hard-to-find components to meet their specific needs.

With the principle of “Quality Parts,Customers Priority,Honest Operation,and Considerate Service”,our business mainly focus on the distribution of electronic components. Line cards we deal with include Microchip,ALPS,ROHM,Xilinx,Pulse,ON,Everlight and Freescale. Main products comprise IC,Modules,Potentiometer,IC Socket,Relay,Connector.Our parts cover such applications as commercial,industrial, and automotives areas.

We are looking forward to setting up business relationship with you and hope to provide you with the best service and solution. Let us make a better world for our industry!



Contact us

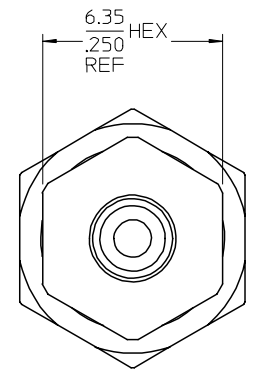
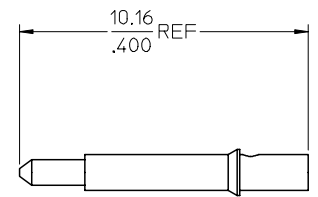
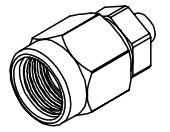
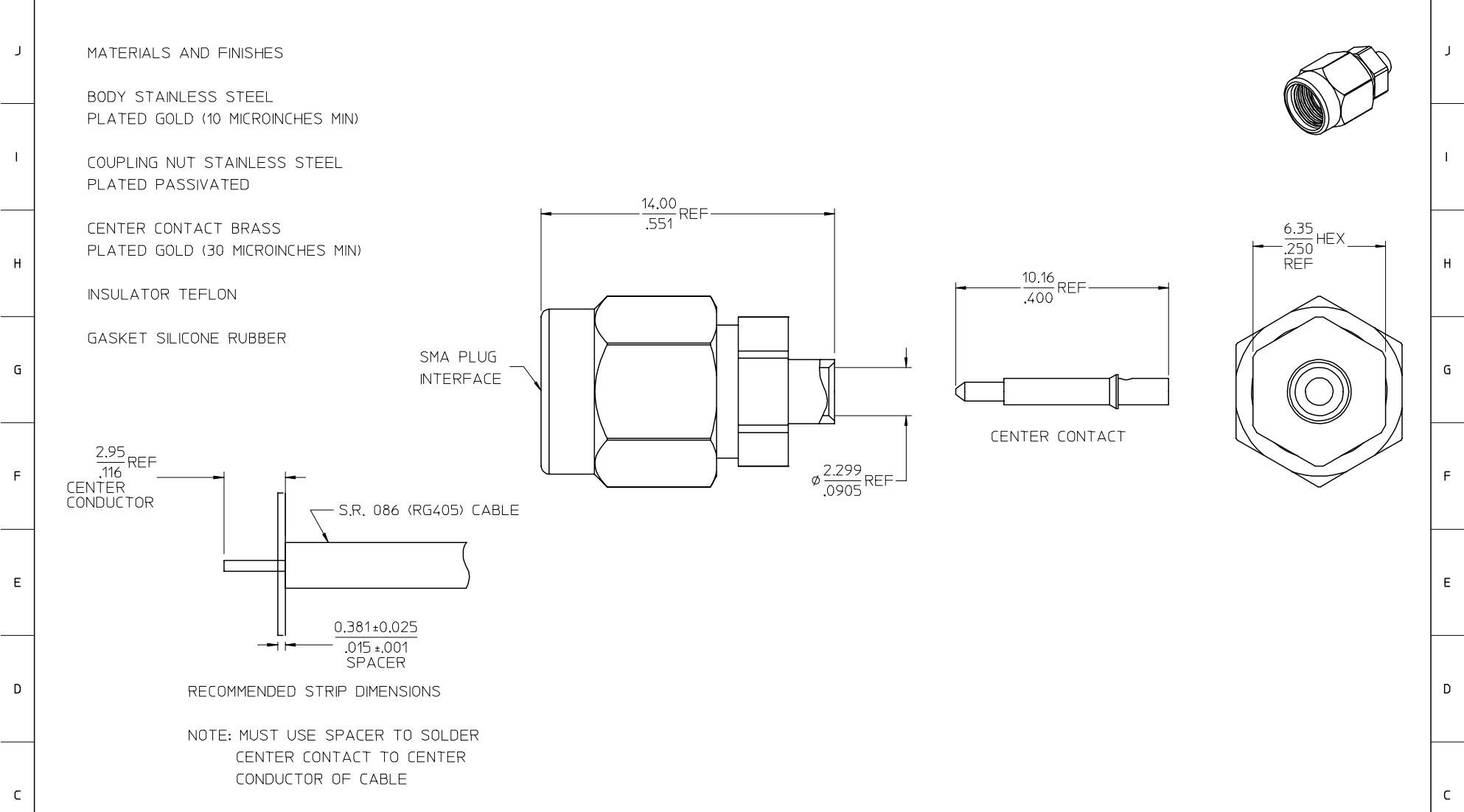
Tel: +86-755-8981 8866 Fax: +86-755-8427 6832

Email & Skype: info@chipsmall.com Web: www.chipsmall.com

Address: A1208, Overseas Decoration Building, #122 Zhenhua RD., Futian, Shenzhen, China



13 12 11 10 9 8 7 6 5 4 3 2 1



RECOMMENDED STRIP DIMENSIONS

NOTE: MUST USE SPACER TO SOLDER CENTER CONTACT TO CENTER CONDUCTOR OF CABLE

MIL-STD-348A, FIG. 310.1	INTERFACE
SPECIFICATION	DESCRIPTION

PART # 73251-2430

<p>A</p> <p>UNLESS OTHERWISE SPECIFIED DIMS ARE MILLIMETERS AND ANGLES ARE DEGREES.</p> <ul style="list-style-type: none"> • ALL OVER. • NO CHATTER OR NON-UNIFORM SURFACE FINISH ALLOWED. • PARTS TO BE FREE OF BURRS & SHARP EDGES 0.13(0.005) MAX BREAK. • EXTERNAL THREADS TO BE ROLLED OR SINGLE POINT. • DIAMETERS TO BE CONCENTRIC WITHIN 0.08(.003) TIR. 	<p>B</p> <p>CHG: REDREW TO SHOW NEW CONT & STRIPPING CABLING INSTRS. CONTACT MAT'L WAS BERYLLIUM COPPER.</p> <p>EC NO: URF2005-0350</p> <p>DRW: JARROBERTSON 2005/02/24</p> <p>CHKD: SHAH 2005/02/24</p> <p>APPR: JMLENER 2005/02/27</p>	<p>QUALITY SYMBOLS</p> <p>▽=0</p> <p>▽=0</p>	<p>GENERAL TOLERANCES (UNLESS SPECIFIED)</p> <table border="1"> <thead> <tr> <th></th> <th>mm</th> <th>INCH</th> </tr> </thead> <tbody> <tr> <td>4 PLACES</td> <td>± .---</td> <td>± .---</td> </tr> <tr> <td>3 PLACES</td> <td>± .---</td> <td>± .---</td> </tr> <tr> <td>2 PLACES</td> <td>± .---</td> <td>± .---</td> </tr> <tr> <td>1 PLACE</td> <td>± .---</td> <td>± .---</td> </tr> <tr> <td colspan="3">ANGULAR ± 1 °</td> </tr> </tbody> </table>			mm	INCH	4 PLACES	± .---	± .---	3 PLACES	± .---	± .---	2 PLACES	± .---	± .---	1 PLACE	± .---	± .---	ANGULAR ± 1 °			<p>DIMENSION STYLE</p> <p>MM/IN</p>		<p>SCALE</p> <p>DESIGN UNITS</p> <p>METRIC</p>	<p>THIRD ANGLE PROJECTION</p>
				mm	INCH																					
			4 PLACES	± .---	± .---																					
			3 PLACES	± .---	± .---																					
2 PLACES	± .---	± .---																								
1 PLACE	± .---	± .---																								
ANGULAR ± 1 °																										
<p>DRAFT WHERE APPLICABLE MUST REMAIN WITHIN DIMENSIONS</p>			<p>MATERIAL NO.</p> <p>732512430</p>	<p>DATE</p> <p>2005/01/26</p>	<p>DATE</p> <p>2005/01/26</p>	<p>TITLE</p> <p>SMA PLUG, STR FOR RG405 50 OHMS, EWR-2409 SMA-PC</p>																				
			<p>APPROVED BY</p> <p>JDW</p>	<p>DATE</p> <p>2005/01/26</p>	<p>MOLEX INCORPORATED</p>		<p>SHEET NO.</p> <p>1 OF 1</p>																			
			<p>THIS DRAWING CONTAINS INFORMATION THAT IS PROPRIETARY TO MOLEX INCORPORATED AND SHOULD NOT BE USED WITHOUT WRITTEN PERMISSION</p>																							