



Chipsmall Limited consists of a professional team with an average of over 10 year of expertise in the distribution of electronic components. Based in Hongkong, we have already established firm and mutual-benefit business relationships with customers from,Europe,America and south Asia,supplying obsolete and hard-to-find components to meet their specific needs.

With the principle of “Quality Parts,Customers Priority,Honest Operation,and Considerate Service”,our business mainly focus on the distribution of electronic components. Line cards we deal with include Microchip,ALPS,ROHM,Xilinx,Pulse,ON,Everlight and Freescale. Main products comprise IC,Modules,Potentiometer,IC Socket,Relay,Connector.Our parts cover such applications as commercial,industrial, and automotives areas.

We are looking forward to setting up business relationship with you and hope to provide you with the best service and solution. Let us make a better world for our industry!



Contact us

Tel: +86-755-8981 8866 Fax: +86-755-8427 6832

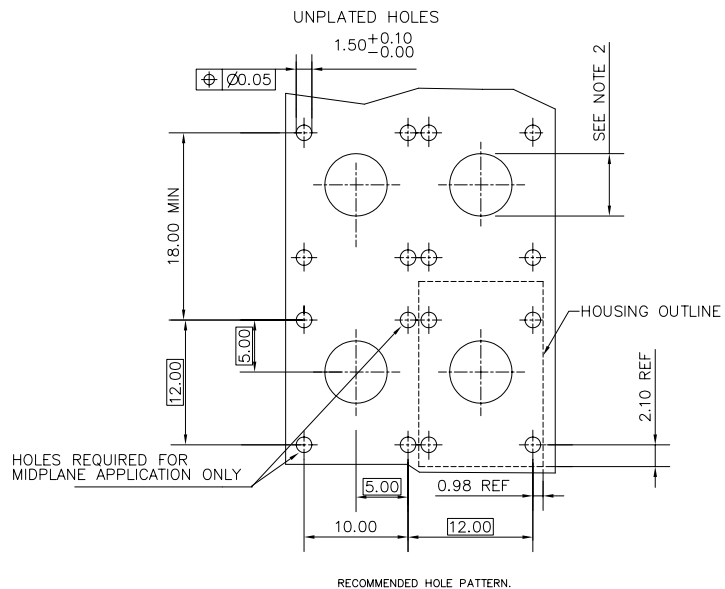
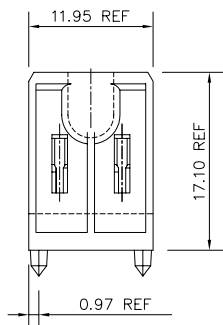
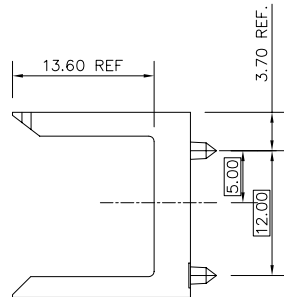
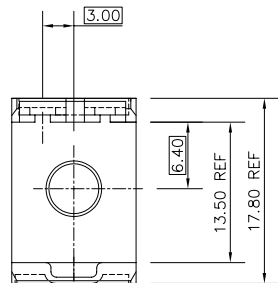
Email & Skype: info@chipsmall.com Web: www.chipsmall.com

Address: A1208, Overseas Decoration Building, #122 Zhenhua RD., Futian, Shenzhen, China



PRODUCT NUMBER
73475-101

NOTE 5



NOTES

- ① MATERIAL: LCP, 30% GLASS FILLED, FLAME RETARDANT ACC. TO UL 94-V0
COLOR: NATURAL
- ② - WHEN USED WITH GUIDE PIN, HOLE DIAMETER TO BE 3.25±0.10 AND UNPLATED
- WHEN USED WITH STR. SCREW-TO-BOARD HIGH POWER INSERT, HOLE DIAMETER TO BE 3.25±0.10 AND PLATED WITH 5.00 MIN. PAD DIAMETER.
- WHEN USED WITH A PLUG/PLUG HIGH POWER COUPLER OR A RECEPTACLE/RECEPTACLE COAX COUPLER, HOLE DIAMETER TO BE 6.00+0.10/-0.00 AND UNPLATED.
3. MAX. FLASH 0.1MM
4. LEAST MATERIAL CONDITION ACC. TO ANSI Y14.5

- ⑤. ADD "LF" SUFFIX AT THE END OF PART NUMBER FOR LEAD FREE OPTION
6. THE HOUSING WILL WITHSTAND EXPOSURE TO 260°C PEAK TEMPERATURE FOR 15 SECONDS IN A WAVE SOLDER APPLICATION WITH A 1.5mm MINIMUM THICK CIRCUIT BOARD. SEE APPLICATION NOTES/PROCEDURES IF THEY ARE AVAILABLE.
7. THIS PRODUCT MEETS EUROPEAN UNION DIRECTIVES AND OTHER COUNTRY REGULATION AS DESCRIBED IN GS-22-008.



FCIconnect.com

Copyright FCI

mat'l. code		surface		tolerance		projection		product family	
SEE NOTES		ISO 1302 ✓		ISO 406 ISO 1101		MM		METRAL (tm)	
ltr	ecn	no	dr	date		tolerances unless otherwise specified		title	
A	V70831	MDF	5/19/97	angles	linear	.0±.3 .00±.13 .000±.0051		HYBRID HEADER HOUSING-12MM	
B	V71431	MDF	10/2/97	0'±2'		scale 1:1		dwg no	
C	V00024	JWS	1/28/00					sheet 1 of 1 size	
D	M05-0200	MHT	9/21/05	dr	M.FETROW	5/19/97		73475	
E	M06-0277	MHT	7/22/06	engr	C.PENDLETON	5/17/97		A3	
				chr	C.PENDLETON	5/17/97		type	
				appd	C.PENDLETON	5/17/97		Product Customer Drawing	
sheet	revision	E							
index	sheet	1							

form: A3