



Chipsmall Limited consists of a professional team with an average of over 10 year of expertise in the distribution of electronic components. Based in Hongkong, we have already established firm and mutual-benefit business relationships with customers from,Europe,America and south Asia,supplying obsolete and hard-to-find components to meet their specific needs.

With the principle of “Quality Parts,Customers Priority,Honest Operation,and Considerate Service”,our business mainly focus on the distribution of electronic components. Line cards we deal with include Microchip,ALPS,ROHM,Xilinx,Pulse,ON,Everlight and Freescale. Main products comprise IC,Modules,Potentiometer,IC Socket,Relay,Connector.Our parts cover such applications as commercial,industrial, and automotives areas.

We are looking forward to setting up business relationship with you and hope to provide you with the best service and solution. Let us make a better world for our industry!



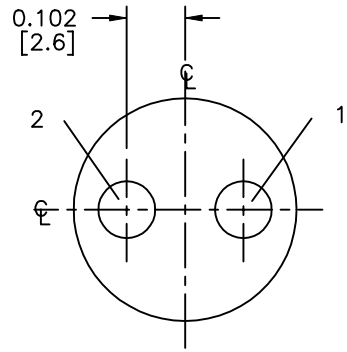
Contact us

Tel: +86-755-8981 8866 Fax: +86-755-8427 6832

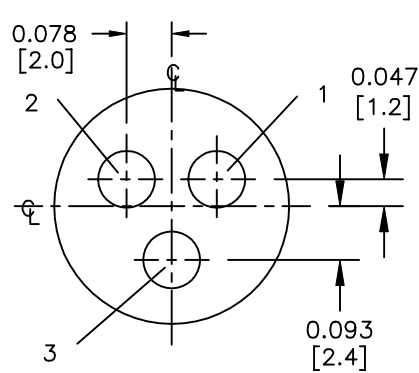
Email & Skype: info@chipsmall.com Web: www.chipsmall.com

Address: A1208, Overseas Decoration Building, #122 Zhenhua RD., Futian, Shenzhen, China

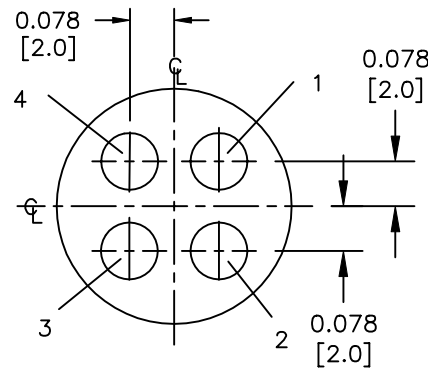




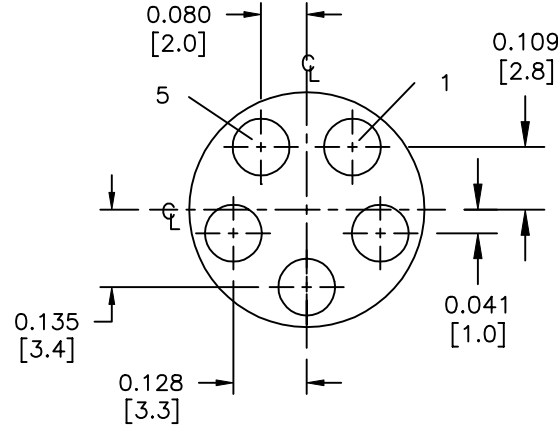
2-#16
PC TAIL DIA. 0.048 ±0.001 REF.



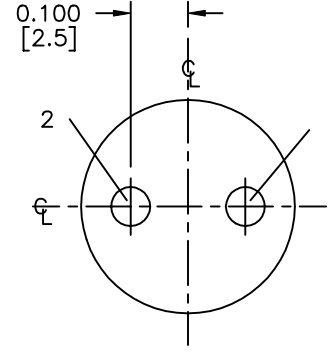
3-#16
PC TAIL DIA. 0.048 ±0.001 REF.



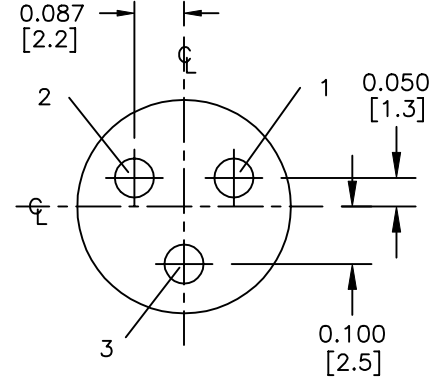
4-#16
PC TAIL DIA. 0.048 ±0.001 REF.



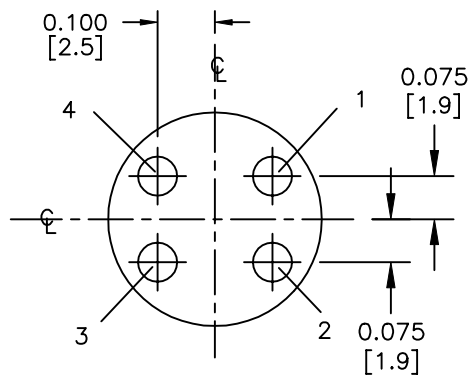
5-#16
PC TAIL DIA. 0.048 ±0.001 REF.



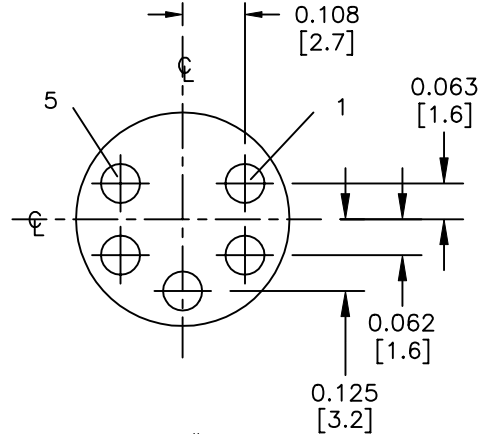
2-#20
PC TAIL DIA. 0.0395 ±0.001 REF.



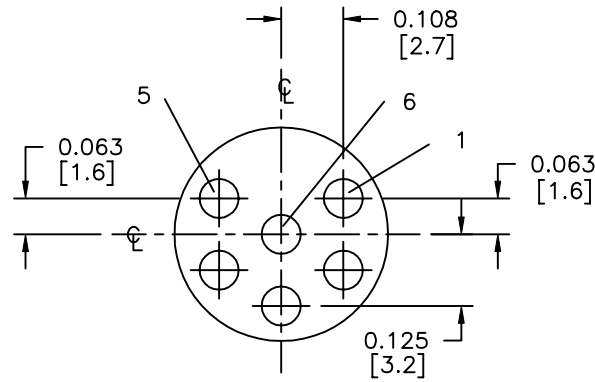
3-#20
PC TAIL DIA. 0.0395 ±0.001 REF.



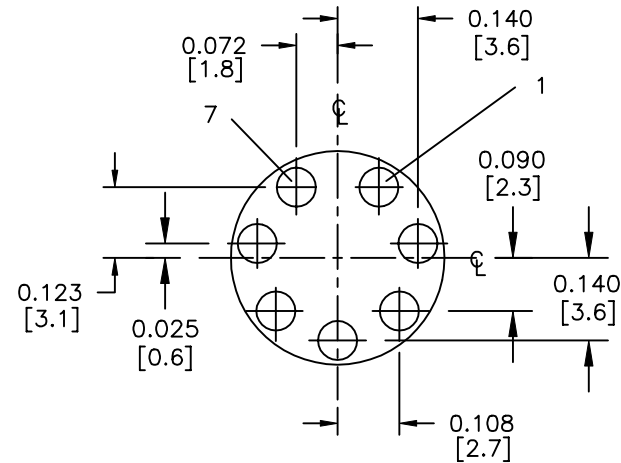
4-#20
PC TAIL DIA. 0.0395 ±0.001 REF.



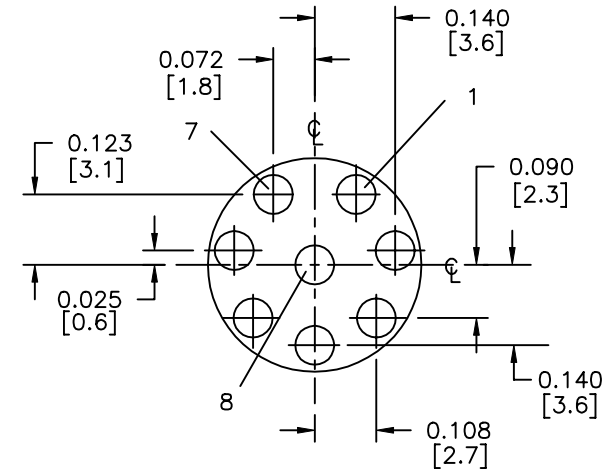
5-#20
PC TAIL DIA. 0.0395 ±0.001 REF.



6-#20
PC TAIL DIA. 0.0395 ±0.001 REF.



7-#20
PC TAIL DIA. 0.0395 ±0.001 REF.
PANEL PIN ONLY




8-#20
PC TAIL DIA. 0.0395 ±0.001 REF.
PANEL PIN ONLY

WIRE VIEWS

CUSTOMER APPROVAL

CHECKED BY: _____
APPROVED BY: _____
DATE: _____

C	AN	03-13-06	ADDED CUSTOMER PRINT PER DOR 04-E149JC AND ECR 6107			
REV.	INIT.	DATE	DESCRIPTION			
ALL INFORMATION ILLUSTRATED IS THE PROPERTY OF "CONXALL CORPORATION." UNAUTHORIZED DUPLICATION OR DISTRIBUTION OF THIS DOCUMENT IS PROHIBITED.			ORIG. DRAWN BY: DATE: AL 04-27-99		 601 E. WILDWOOD VILLA PARK, IL 60181 TITLE: HOLE PATTERNS MINI-CON-X CUSTOMER: PART NUMBER: HPMISTD REV. C	
			CHECKED BY:			
ALL UNITS ARE IN FEET, INCHES, FRACTION OF INCHES AND DECIMALS.			APPROVED BY:			
UNLESS OTHERWISE SPECIFIED TOLERANCES: 3 PLACE DECIMALS ±.005 ANGLES ±1° FRACTIONS ±1/16			SCALE: 3:1 SIZE: B SHEET: 1 OF 1			
▷ = CRITICAL CHARACTERISTIC FLAG PER SPEC. XXXX			FILE: HPMISTD	DIRECTORY: SH1 DETAILS	PART NUMBER: HPMISTD	