



Chipsmall Limited consists of a professional team with an average of over 10 year of expertise in the distribution of electronic components. Based in Hongkong, we have already established firm and mutual-benefit business relationships with customers from,Europe,America and south Asia,supplying obsolete and hard-to-find components to meet their specific needs.

With the principle of “Quality Parts,Customers Priority,Honest Operation,and Considerate Service”,our business mainly focus on the distribution of electronic components. Line cards we deal with include Microchip,ALPS,ROHM,Xilinx,Pulse,ON,Everlight and Freescale. Main products comprise IC,Modules,Potentiometer,IC Socket,Relay,Connector.Our parts cover such applications as commercial,industrial, and automotives areas.

We are looking forward to setting up business relationship with you and hope to provide you with the best service and solution. Let us make a better world for our industry!



Contact us

Tel: +86-755-8981 8866 Fax: +86-755-8427 6832

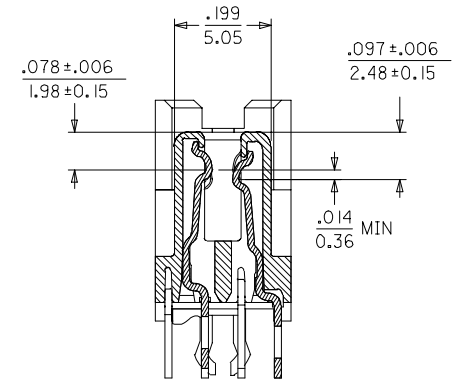
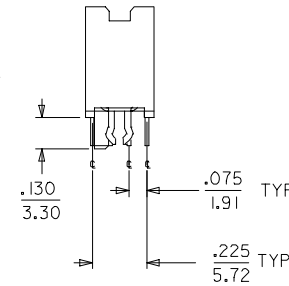
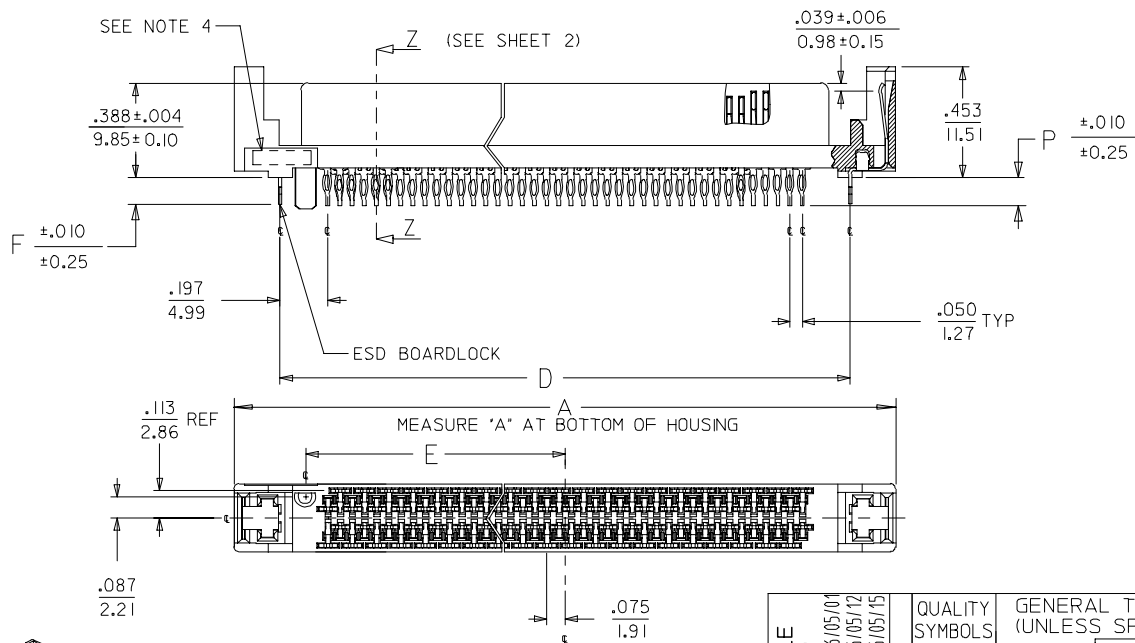
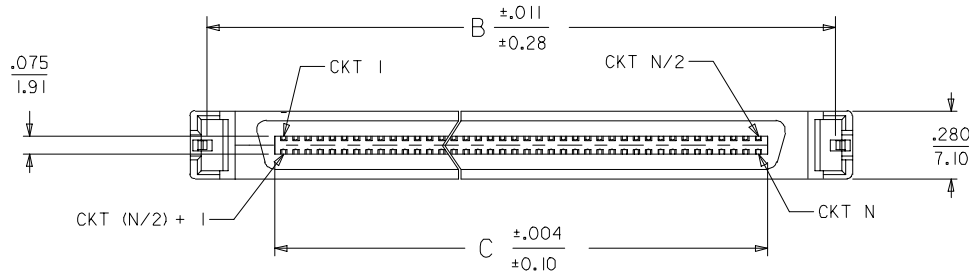
Email & Skype: info@chipsmall.com Web: www.chipsmall.com

Address: A1208, Overseas Decoration Building, #122 Zhenhua RD., Futian, Shenzhen, China



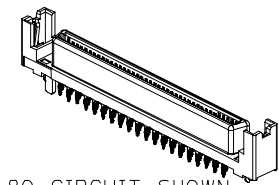
NOTES:

- MATERIAL:**
HOUSING: I.R. COMPATIBLE POLYMER, GLASS FILLED, UL 94 V 0, BLACK
TERMINALS: COPPER ALLOY
BOARDLOCK: COPPER ALLOY
- FINISH:**
TERMINALS: SELECTIVE GOLD IN CONTACT AREA
THICKNESS = 30 MICROINCHES / 0.763 MICROMETERS
SELECTIVE TIN-LEAD IN TAIL AREA
THICKNESS = 100 MICROINCHES / 2.54 MICROMETERS
NICKEL UNDERPLATE OVERALL.
ESD BOARDLOCK:
TIN OVERALL.
- PRODUCT SPECIFICATION:** PS-73826-0000
- FOUR DIGIT DATE CODE** IN THIS LOCATION (WK YR).
- CONTACT GAP** WILL ACCOMMODATE MATING CONNECTOR OF:
.063+/- .003 (1.60+/- 0.08)
- PART MATES** WITH ALL PLUGS MFG. IN ACCORDANCE WITH EIA-700A0AE.



SECTION Z-Z
SCALE - 4:1

2	K
1	K
SHEET REVISION	



80 CIRCUIT SHOWN
SCALE - 1:1

CLARIFY PCB HOLE	QUALITY SYMBOLS
EC NO: UCP2006-2509	$\nabla=0$
DRWN: BARKER 2006/05/01	$\nabla=0$
CHKD: BSMART 2006/05/12	
APPR: SMILLER 2006/05/15	
REV	DESCRIPTION
K	

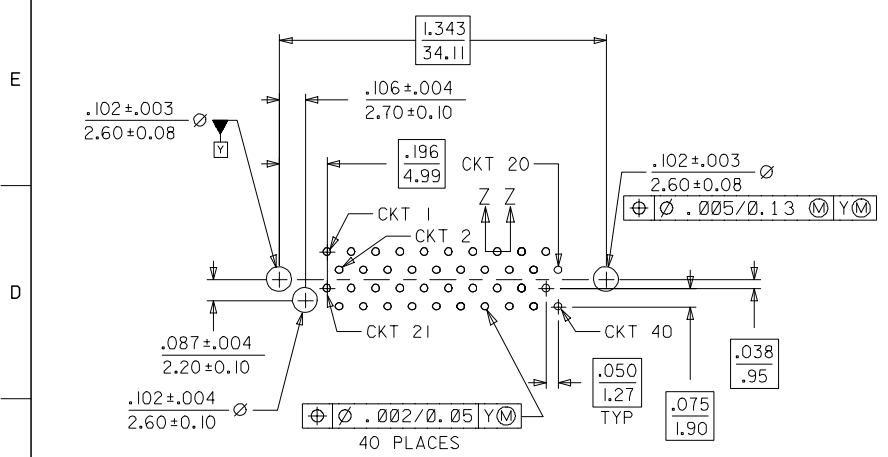
GENERAL TOLERANCES (UNLESS SPECIFIED)
4 PLACES \pm ---
3 PLACES \pm ---
2 PLACES \pm 0.13
1 PLACE \pm 0.25
ANGULAR \pm 1/2°

DIMENSION STYLE	SCALE	DESIGN UNITS
IN/MM	2:1	INCH
DRAWN BY	DATE	TITLE
ACHAMMER	12/09/1997	SALES ASSEMBLY
CHECKED BY	DATE	MOLEX SCA-2
ACHAMMER	02/10/1998	PRESS-FIT RECEPTACLE
APPROVED BY	DATE	MOLEX INCORPORATED
BANAKIS	02/12/1998	
MATERIAL NO.	DOCUMENT NO.	SHEET NO.
SEE TABLE	SD-73826-001	1 OF 2

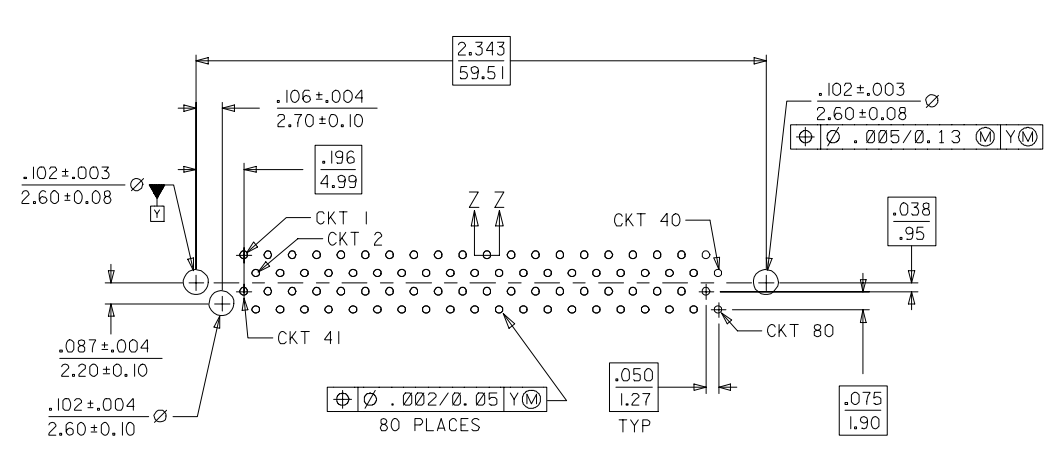
DRAFT WHERE APPLICABLE
MUST REMAIN WITHIN DIMENSIONS
SIZE B

THIS DRAWING CONTAINS INFORMATION THAT IS PROPRIETARY TO MOLEX INCORPORATED AND SHOULD NOT BE USED WITHOUT WRITTEN PERMISSION	
---	--

MATERIAL NUMBER	CIRCUIT SIZE	DIMENSION A	DIMENSION B	DIMENSION C	DIMENSION D	DIMENSION E	DIMENSION F	DIMENSION P	ADVANCED TERMINALS / CIRCUITS (SECTION Z-Z, SHEET 1)
738260001	80	2.717/(69.0)	2.583/(65.6)	2.025/(51.44)	2.343/(59.51)	1.066/(27.06)	.109/(2.77)	.125/(3.18)	1, 36, 37, 38, 39, 40, 41, 42, 43, 45, 46, 75, 76, 77, 78, 79, 80
738260002	40	1.717/(43.6)	1.583/(40.2)	1.025/(26.04)	1.343/(34.1)	.566/(14.38)	.109/(2.77)	.125/(3.18)	21, 22, 23, 26, 29, 32, 35, 36, 37, 38, 39, 40
738260003	80	2.717/(69.0)	2.583/(65.6)	2.025/(51.44)	2.343/(59.51)	1.066/(27.06)	.109/(2.77)	.135/(3.43)	1, 36, 37, 38, 39, 40, 41, 42, 43, 45, 46, 75, 76, 77, 78, 79, 80
738260004	40	1.717/(43.6)	1.583/(40.2)	1.025/(26.04)	1.343/(34.1)	.566/(14.38)	.109/(2.77)	.135/(3.43)	21, 22, 23, 26, 29, 32, 35, 36, 37, 38, 39, 40

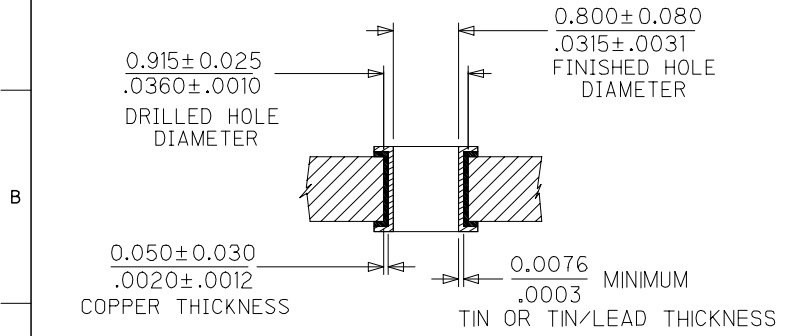


PCB LAYOUT FOR 40 CIRCUIT COMPONENT SIDE



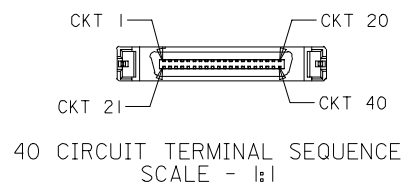
PCB LAYOUT FOR 80 CIRCUIT COMPONENT SIDE

RECOMMENDED BOARD THICKNESS = .093

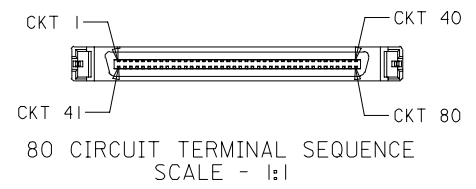


NOTE: SECTION Z-Z - RECOMMENDED PCB HOLE CONFIGURATION

THE DRILLED HOLE SIZE IS BASED ON THE RECOMMENDED PLATING AND THICKNESSES. IF OTHER PLATING TYPES AND/OR THICKNESSES ARE USED, A DRILL SIZE THAT WILL RESULT IN THE FINISHED HOLE SIZE INDICATED WILL NEED TO BE USED.



40 CIRCUIT TERMINAL SEQUENCE SCALE - 1:1



80 CIRCUIT TERMINAL SEQUENCE SCALE - 1:1

REV	DESCRIPTION	QUALITY SYMBOLS	GENERAL TOLERANCES (UNLESS SPECIFIED)		DIMENSION STYLE		SCALE	DESIGN UNITS	THIRD ANGLE PROJECTION
			mm	INCH	IN/MM	DATE			
		▽=0	4 PLACES	± ---	± ---	DRAWN BY	12/09/1997	SALES ASSEMBLY MOLEX SCA-2 PRESS-FIT RECEPTACLE	MOLEX MOLEX INCORPORATED
		▽=0	3 PLACES	± ---	±.005	CHECKED BY	DATE		
			2 PLACES	± 0.13	±.010	ACHAMMER	02/10/1998		
			1 PLACE	± 0.25	± ---	APPROVED BY	DATE		
			ANGULAR ±1/2°			BANAK IS	02/10/1998		
			DRAFT WHERE APPLICABLE MUST REMAIN WITHIN DIMENSIONS			MATERIAL NO.	DOCUMENT NO.		
						SEE TABLE	SD-73826-001		
						SIZE B	THIS DRAWING CONTAINS INFORMATION THAT IS PROPRIETARY TO MOLEX INCORPORATED AND SHOULD NOT BE USED WITHOUT WRITTEN PERMISSION		