



Chipsmall Limited consists of a professional team with an average of over 10 year of expertise in the distribution of electronic components. Based in Hongkong, we have already established firm and mutual-benefit business relationships with customers from,Europe,America and south Asia,supplying obsolete and hard-to-find components to meet their specific needs.

With the principle of "Quality Parts,Customers Priority,Honest Operation,and Considerate Service",our business mainly focus on the distribution of electronic components. Line cards we deal with include Microchip,ALPS,ROHM,Xilinx,Pulse,ON,Everlight and Freescale. Main products comprise IC,Modules,Potentiometer,IC Socket,Relay,Connector.Our parts cover such applications as commercial,industrial, and automotives areas.

We are looking forward to setting up business relationship with you and hope to provide you with the best service and solution. Let us make a better world for our industry!



Contact us

Tel: +86-755-8981 8866 Fax: +86-755-8427 6832

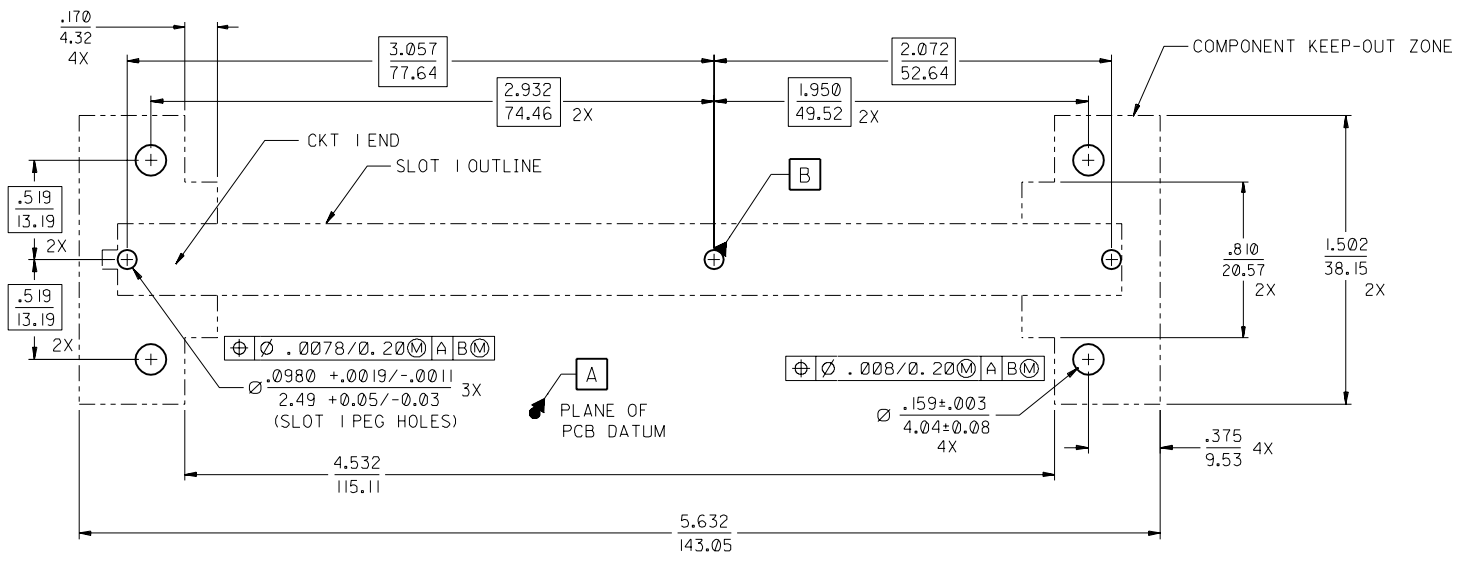
Email & Skype: info@chipsmall.com Web: www.chipsmall.com

Address: A1208, Overseas Decoration Building, #122 Zhenhua RD., Futian, Shenzhen, China

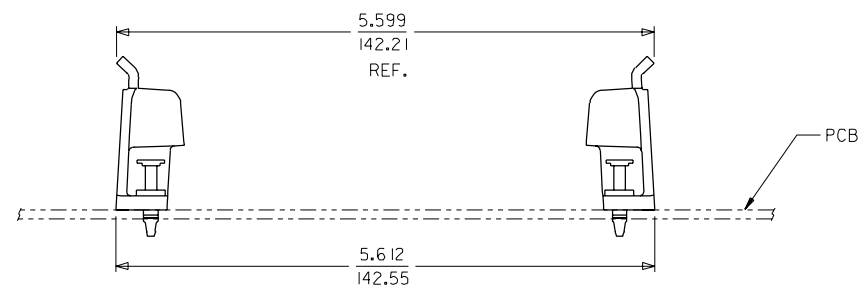
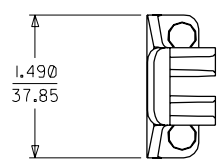
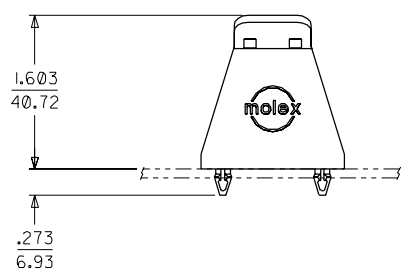
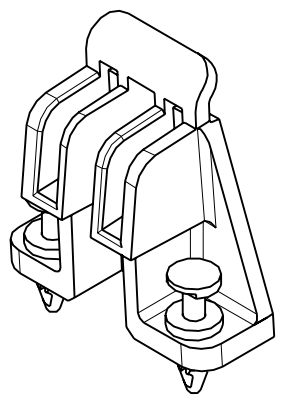


- NOTES:
1. MATERIAL: THERMOPLASTIC
COLOR: BLACK
 2. FINISH: NONE
 3. PRODUCT SPECIFICATION: NONE
 4. THIS HARDWARE PACKAGE IS FOR USE WITH MOLEX SLOT 1 CONNECTOR.

MATERIAL NUMBER	PACKAGING STYLE
73964-0001	TRAY PACK
73964-0002	INDIVIDUAL BAG (2 PCS)



RECOMMENDED PCB LAYOUT
(CONNECTOR SIDE)
(SCALE 2:1)



INITIAL RELEASE EC NO. UCP 1998-0003 DRWN: LAURX 98/02/27 CHK: LAURX 98/02/27 APPR: REGNIER 98/03/05	QUALITY SYMBOLS MAJOR $\nabla = \emptyset$ CRITICAL $\nabla C = \emptyset$	GENERAL TOLERANCES: (UNLESS SPECIFIED)	SCALE 1 : 1	DESIGN UNITS <input type="checkbox"/> mm <input checked="" type="checkbox"/> INCH	DIMENSIONS: <input type="checkbox"/> mm <input checked="" type="checkbox"/> INCH <input type="checkbox"/> mm ONLY	SHT REV		
		4 PLACES $\pm 0. -- \pm . --$ 3 PLACES $\pm 0. -- \pm 0.1$ 2 PLACES $\pm 0.25 \pm . --$ 1 PLACE $\pm 0. -- \pm . --$	DRAWN BY & DATE LAURX 98/02/27	CHECKED BY & DATE LAURX 98/02/27	APPROVED BY & DATE REGNIER 98/03/05	TITLE: SLOT 1 - LOW COST RM WITH PLASTIC FASTENERS SALES DRAWING	MATERIAL NO. SEE CHART	DRAWING NO. SD-73964-002
		ANGULAR: $\pm 1/2^\circ$	CAD FILENAME S7396401.DGN	MOLEX INCORPORATED	SHEET NO. 1 OF 1	SIZE C		
		DRAFT WHERE APPLICABLE MUST REMAIN WITHIN DIMENSIONS	THIS DRAWING CONTAINS INFORMATION THAT IS PROPRIETARY TO MOLEX INCORPORATED AND SHOULD NOT BE USED WITHOUT WRITTEN PERMISSION.					