



Chipsmall Limited consists of a professional team with an average of over 10 year of expertise in the distribution of electronic components. Based in Hongkong, we have already established firm and mutual-benefit business relationships with customers from,Europe,America and south Asia,supplying obsolete and hard-to-find components to meet their specific needs.

With the principle of “Quality Parts,Customers Priority,Honest Operation,and Considerate Service”,our business mainly focus on the distribution of electronic components. Line cards we deal with include Microchip,ALPS,ROHM,Xilinx,Pulse,ON,Everlight and Freescale. Main products comprise IC,Modules,Potentiometer,IC Socket,Relay,Connector.Our parts cover such applications as commercial,industrial, and automotives areas.

We are looking forward to setting up business relationship with you and hope to provide you with the best service and solution. Let us make a better world for our industry!



## Contact us

Tel: +86-755-8981 8866 Fax: +86-755-8427 6832

Email & Skype: [info@chipsmall.com](mailto:info@chipsmall.com) Web: [www.chipsmall.com](http://www.chipsmall.com)

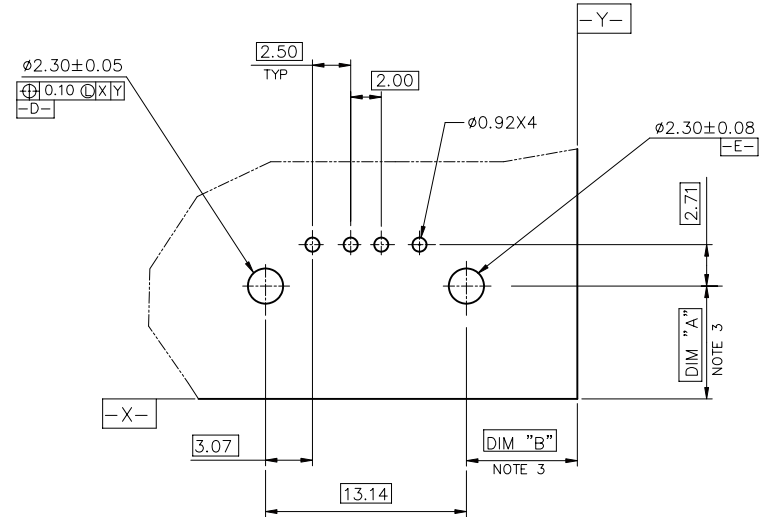
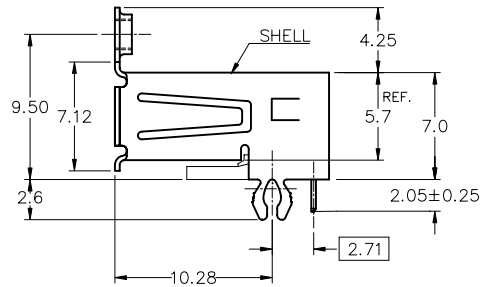
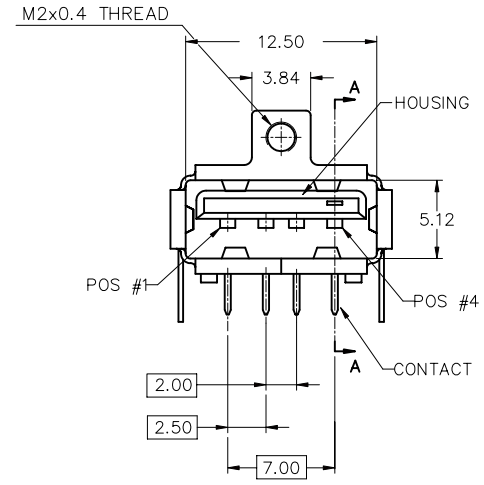
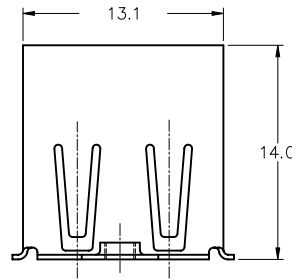
Address: A1208, Overseas Decoration Building, #122 Zhenhua RD., Futian, Shenzhen, China






Tous droits strictement reserves. Reproduction ou communication a des tiers interdite  
sous quelque forme que ce soit sans autorisation ecrite du proprietaire.  
Propriete de ©BERG ELECTRONICS. Droits de reproduction BERG ELECTRONICS INC.

All rights strictly reserved. Reproduction or issue to third parties in any form  
whatever is not permitted without written authority from the proprietor.  
Property of ©BERG ELECTRONICS Copyright BERG ELECTRONICS INC.

PRODUCT NO.  
74056



P.C. BOARD LAYOUT

mat'l. code NOTE 1 & 2				tolerances unless otherwise specified			CUSTOMER COPY		 Electronics www.fciconnect.com										
ltr	ecn no	dr	date	linear	.X ±.30			projection 	title UNIV. SERIAL BUS RECEPTACLE WITH TOP MOUNT										
A	T70434	P P	10/15/97		.XX ±.20														
B	T90121	P P	03/22/99		.XXX ±.10														
C	T90244	P P	07/01/99	angles	0° ± 3°				product family      USB size    dwg no  A4      74056										
D	T00043	P P	02/16/00	dr	PETER	10/15/97													
E	N04-0066	PH	10/13/04	enrg	R Y LIU	10/15/97													
				chr	R Y LIU	10/15/97	scale 2:1	sheet 1 of 2											
				appd	J. TSAO	10/15/97													
sheet index	revision sheet	E 1	D 2																

Tous droits strictement reserves. Reproduction ou communication a des tiers interdite sous quelque forme que ce soit sans autorisation écrite du propriétaire. Propriete de ©BERG ELECTRONICS. Droits de reproduction BERG ELECTRONICS INC.

All rights strictly reserved. Reproduction or issue to third parties in any form whatever is not permitted without written authority from the proprietor. Property of ©BERG ELECTRONICS Copyright BERG ELECTRONICS INC.

PRODUCT NO.  
74056

PRODUCT NUMBER CODE

74056 - X X X X B LF

BASE PRODUCT NUMBER

HOUSING COLOR OPTIONS

- 0 - WHITE
- 1 - BLACK
- 3 - BLACK + NICKEL PLATING ONLY
- 5 - BLACK HSG PA46

SENSOR CONTACT OPTION

- 0 - WITOUT SENSOR CONTACT

SHELL OPTIONS

- 1 - WITHOUT BACK SHIELD
- 2 - WITH BACK SHIELD

TERMINAL PLATING OPTION

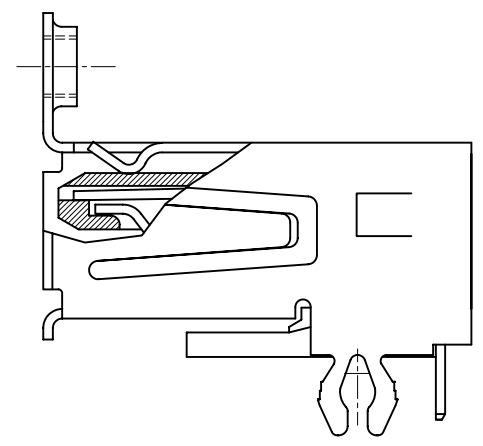
- 0 - 50u" Ni UNDERPLATE
- 30u" GXT CONTACT AREA
- 100u" TIN/LEAD TAIL AREA WHEN WITHOUT "LF" MARK
- 100u" MATTE TIN TAIL AREA WHEN WITH "LF" MARK

PACKAGING OPTION

- B - TUBES

LEAD FREE MARK


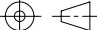
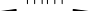
PLEASE SEE TERMINAL PLATING OPTION  
PLEASE USE 74056-50X0BLF AS 74056-10X0BLF



SECTION A-A

NOTES:

- MATERIAL:  
CONTACTS: PHOSPHOR BRONZE  
SHIELD: PHOSPHOR BRONZE  
HOUSING: UL 94V-0 THERMOPLASTIC, COLOR: WHITE
- PLATING: CONTACTS: GOLD FLASH OVER  
PALLADIUM NICKEL (0.76um MINIMUM)IN CONTACT AREA; 2.54 um TIN-LEAD OR TIN MINIMUM IN SOLDER TAIL AREA. 1.27 um MINIMUM NICKEL UNDERPLATE OVER ALL SURFACES.  
SHIELD: 2.54 um MINIMUM TIN/LEAD OVER 1.27 um MINIMUM NICKEL UNDERPLATE
- DATUMS & BASIC DIMENSIONS TO BE DETERMINED BY CUSTOMER.
- RECOMMENDED BOARD THICKNESS IS 0.8~1.2 mm.
- MAXIMUM PANEL THICKNESS TO BE 2.67 mm IF MOUNTED BEHIND PANEL.
- If lead free p/n, a lead free label will appear at packing
- If lead free p/n, the housing will withstand exposure to 260° peak temperature for 40 senconds in a convection, infra-red or vapor phase reflow oven
- If lead free p/n, the product meets the requirements of the European Union Directive of Restrictions for Hazardous Substances (Directive 2002/95/EC) and can be processed in the process conditions for which the product is developed. FCI, its subsidiaries and affiliates ("FCI") provides the above data and information in good faith based upon current knowledge and experience, but makes no warranty that such data or information is free from error, is complete or is sufficient for user's intended purpose EVEN IF MADE KNOWN TO FCI. FCI specifically disclaims any warranty, express or implied, and assumes no liability with respect to the effectiveness or safety of the products listed above. Each user must make its own determination as to the suitability of FCI's products and materials for its own particular purposes, and must assure that its products fabricated from FCI's products and materials are safe and lawful. It is the user's responsibility to assure proper use and disposal of FCI's products and materials, the safety and health of user's employees and customers, and user's compliance with applicable laws and regulations

mat'l. code NOTE 1 & 2				tolerances unless otherwise specified			CUSTOMER COPY		 Electronics www.fciconnect.com						
ltr	ecn no	dr	date	linear	.X ±.30			projection 	title UNIV. SERIAL BUS RECEPTACLE WITH TOP MOUNT						
E					.XX ±.20										
					.XXX ±.10										
				angles	0° ± 3°			 mm scale 2:1	product family USB size A4 dwg no 74056 code — sheet 2 of						
				dr	PETER	10/15/97									
				engr	R Y LIU	10/15/97									
				chr	R Y LIU	10/15/97									
				appd	J. TSAO	10/15/97									
sheet		revision													
index		sheet													