



Chipsmall Limited consists of a professional team with an average of over 10 year of expertise in the distribution of electronic components. Based in Hongkong, we have already established firm and mutual-benefit business relationships with customers from,Europe,America and south Asia,supplying obsolete and hard-to-find components to meet their specific needs.

With the principle of "Quality Parts,Customers Priority,Honest Operation,and Considerate Service",our business mainly focus on the distribution of electronic components. Line cards we deal with include Microchip,ALPS,ROHM,Xilinx,Pulse,ON,Everlight and Freescale. Main products comprise IC,Modules,Potentiometer,IC Socket,Relay,Connector.Our parts cover such applications as commercial,industrial, and automotives areas.

We are looking forward to setting up business relationship with you and hope to provide you with the best service and solution. Let us make a better world for our industry!



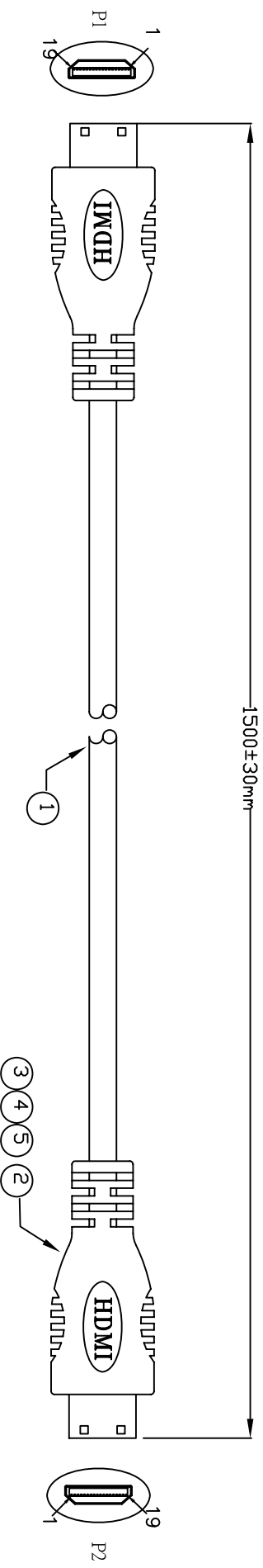
## Contact us

Tel: +86-755-8981 8866 Fax: +86-755-8427 6832

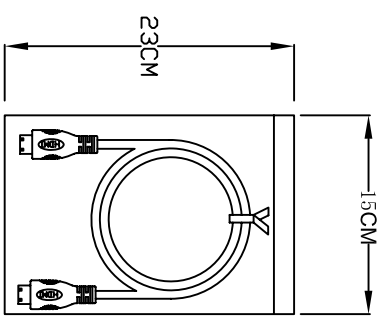
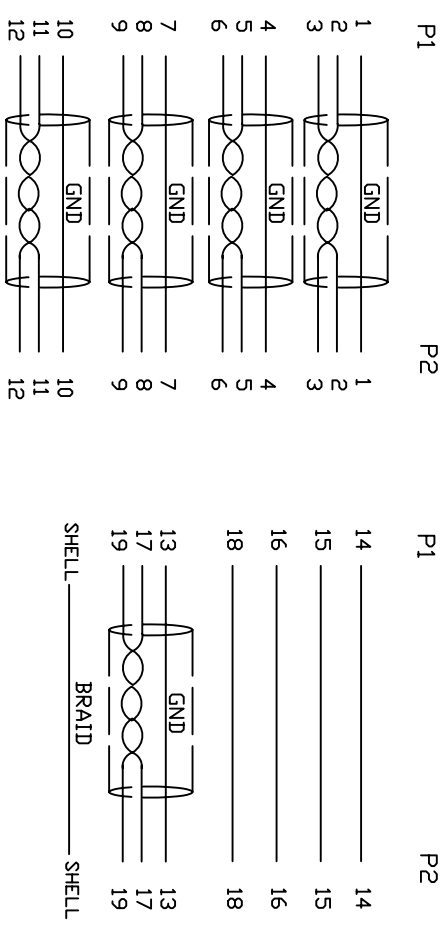
Email & Skype: info@chipsmall.com Web: www.chipsmall.com

Address: A1208, Overseas Decoration Building, #122 Zhenhua RD., Futian, Shenzhen, China





1. Wiring Diagram.



- 2. Cable test condition :
  - Open / Short : 100%
  - Insulation resistance : 5M ohms
  - Contact resistance : 2 ohm
  - Hipot : DC 300V / 1 sec
- 3. Each pcs with PE polybag.

5	COPER	W/20MM* <u>1.35MM</u>	1		A	INITIAL RELEASE	2015/10/10
4	PVC	45P PVC BLACK OVERMOLD	25g		REVISION#	DESCRIPTION	DATE
3	PE	LLDPE 500026 6201 INSIDE MOLDING	16g		<b>Cnc Tech, LLC</b> DWN NO: <b>742-20010-00150</b> TITLE: <b>HDMI C/M TO HDMI C/M CABLE</b>		
2	CONN	HDMI C TYPE MALE PIN G/F ,SHELL PLATED NICKEL, INSULATION BLACK	2	P1,P2			
1	CABLE	UL20276 (30AWG (7/0.1TS) *IP+EA+AL/MY) *5+30AWG (7/0.1TS) *C +AEM(16/6/0.12AM) ODS.0 BLACK	1	1500mm	DRAWN	DATE	REV
NO.	PART NO.	DESCRIPTION		QTY	UNIT/REF	CHECKED	CUSTOMER P/N:
		BILL OF MATERIAL				APPROVAL	SHEET 1 OF 1