



Chipsmall Limited consists of a professional team with an average of over 10 year of expertise in the distribution of electronic components. Based in Hongkong, we have already established firm and mutual-benefit business relationships with customers from,Europe,America and south Asia,supplying obsolete and hard-to-find components to meet their specific needs.

With the principle of “Quality Parts,Customers Priority,Honest Operation,and Considerate Service”,our business mainly focus on the distribution of electronic components. Line cards we deal with include Microchip,ALPS,ROHM,Xilinx,Pulse,ON,Everlight and Freescale. Main products comprise IC,Modules,Potentiometer,IC Socket,Relay,Connector.Our parts cover such applications as commercial,industrial, and automotives areas.

We are looking forward to setting up business relationship with you and hope to provide you with the best service and solution. Let us make a better world for our industry!



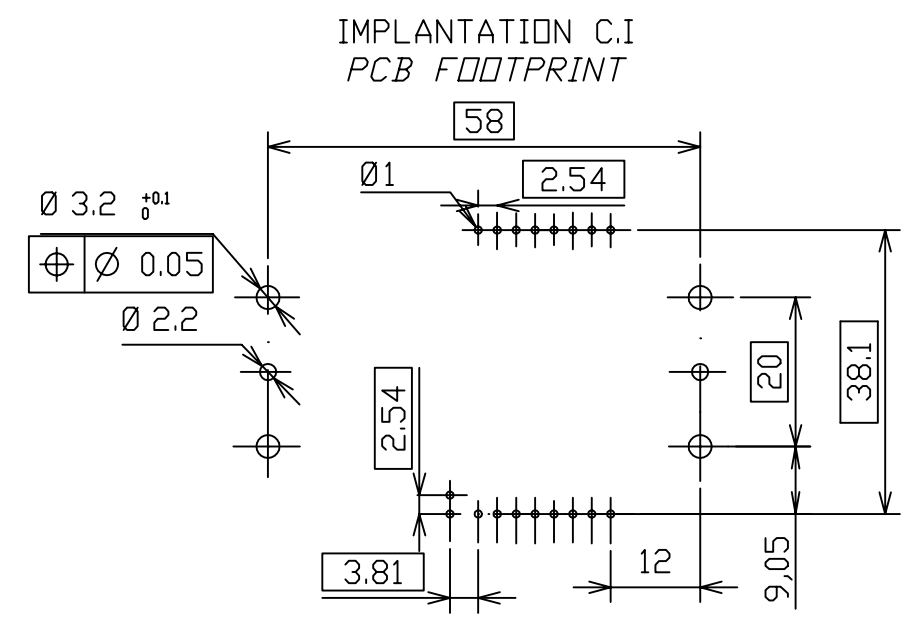
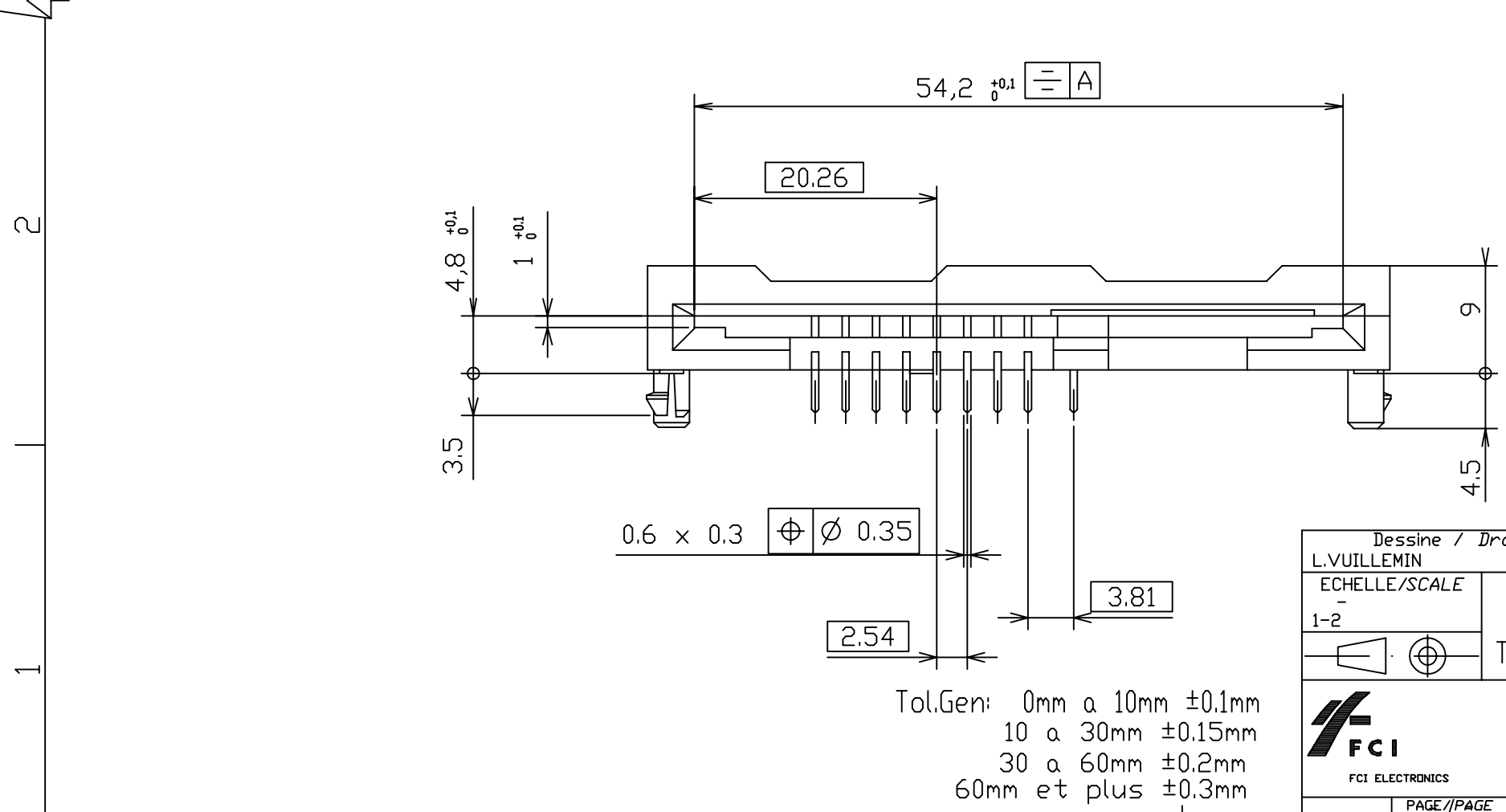
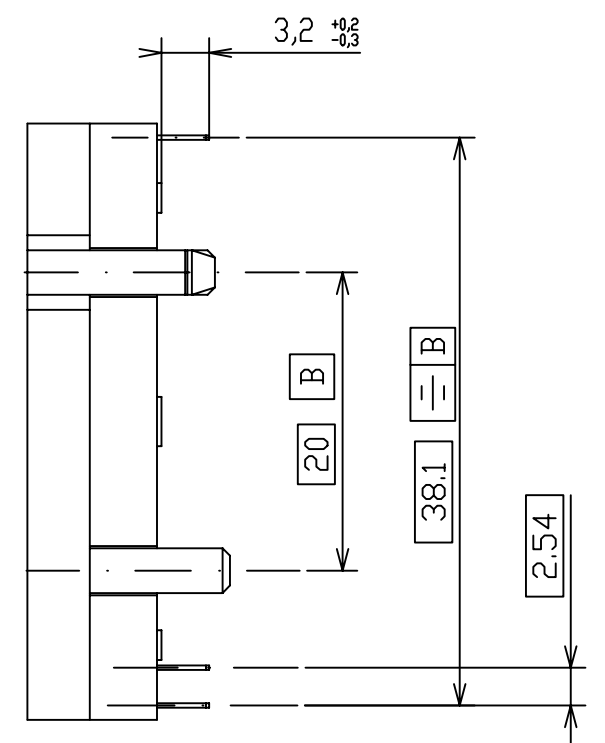
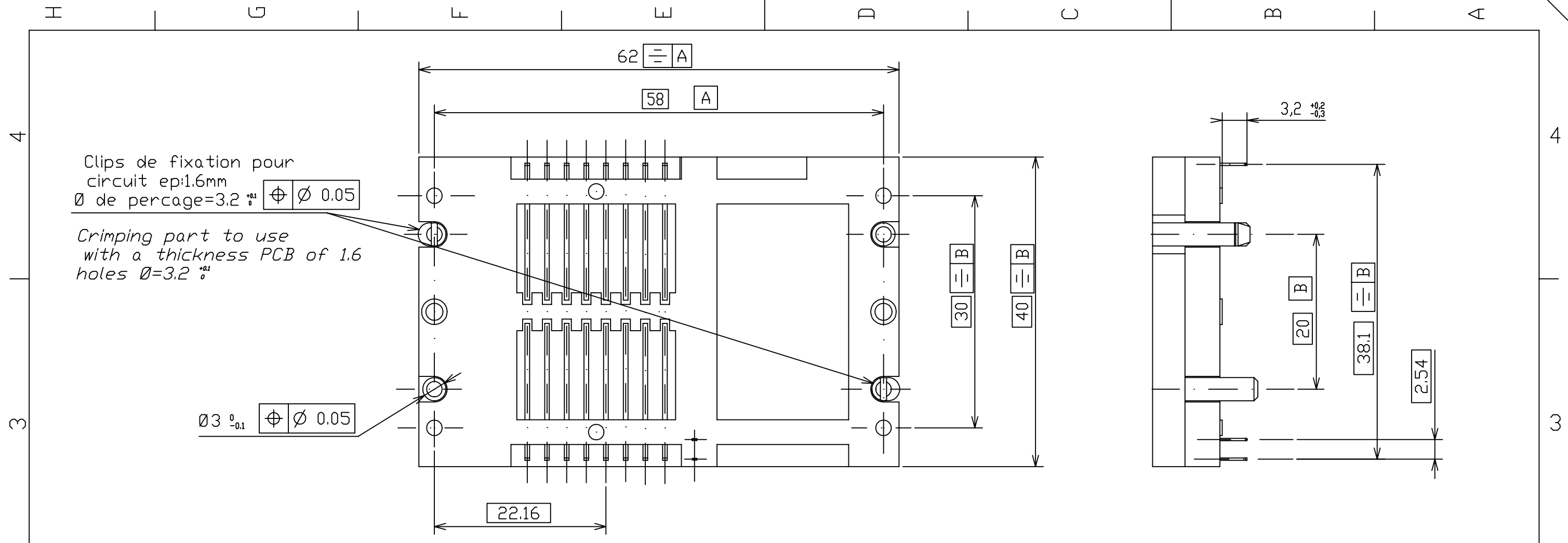
Contact us

Tel: +86-755-8981 8866 Fax: +86-755-8427 6832

Email & Skype: info@chipsmall.com Web: www.chipsmall.com

Address: A1208, Overseas Decoration Building, #122 Zhenhua RD., Futian, Shenzhen, China





Dessine / Drawn L.VUILLEMIN	Verifie / Checked D.PERRIN	Approuve / Approved E.OUDIC	-	-
ECHELLE/SCALE 1-2	Dossier/ File: VXX 27528		-	-
	Type: L04	CONNECTEUR DE CARTE	-	-
	FRAMATOME CONNECTORS PONTARLIER Rue Claude CHAPPE BP19 25301 PONTARLIER CEDEX - FRANCE	COMMUNICATION, REPRODUCTION, UTILISATION INTERDITES SAUF AUTORISATION ECRITE. NO PART OF THIS DOCUMENT MAY BE COMMUNICATED, REPRODUCED OR USED WITHOUT PRIOR WRITTEN PERMISSION.	04	11-12-97
PAGE/PAGE	VJW 11960	EDITION/ISSUE	03	08-04-94
			02	07-06-91
			01	03-03-89