



Chipsmall Limited consists of a professional team with an average of over 10 year of expertise in the distribution of electronic components. Based in Hongkong, we have already established firm and mutual-benefit business relationships with customers from,Europe,America and south Asia,supplying obsolete and hard-to-find components to meet their specific needs.

With the principle of “Quality Parts,Customers Priority,Honest Operation,and Considerate Service”,our business mainly focus on the distribution of electronic components. Line cards we deal with include Microchip,ALPS,ROHM,Xilinx,Pulse,ON,Everlight and Freescale. Main products comprise IC,Modules,Potentiometer,IC Socket,Relay,Connector.Our parts cover such applications as commercial,industrial, and automotives areas.

We are looking forward to setting up business relationship with you and hope to provide you with the best service and solution. Let us make a better world for our industry!



Contact us

Tel: +86-755-8981 8866 Fax: +86-755-8427 6832

Email & Skype: info@chipsmall.com Web: www.chipsmall.com

Address: A1208, Overseas Decoration Building, #122 Zhenhua RD., Futian, Shenzhen, China

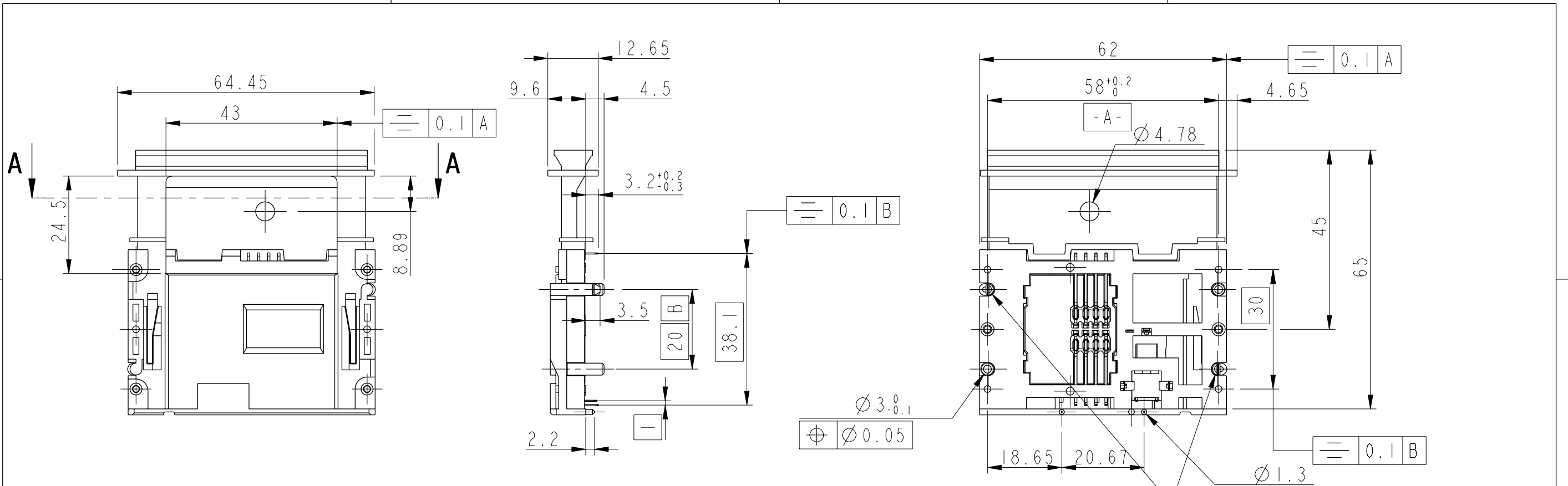


1

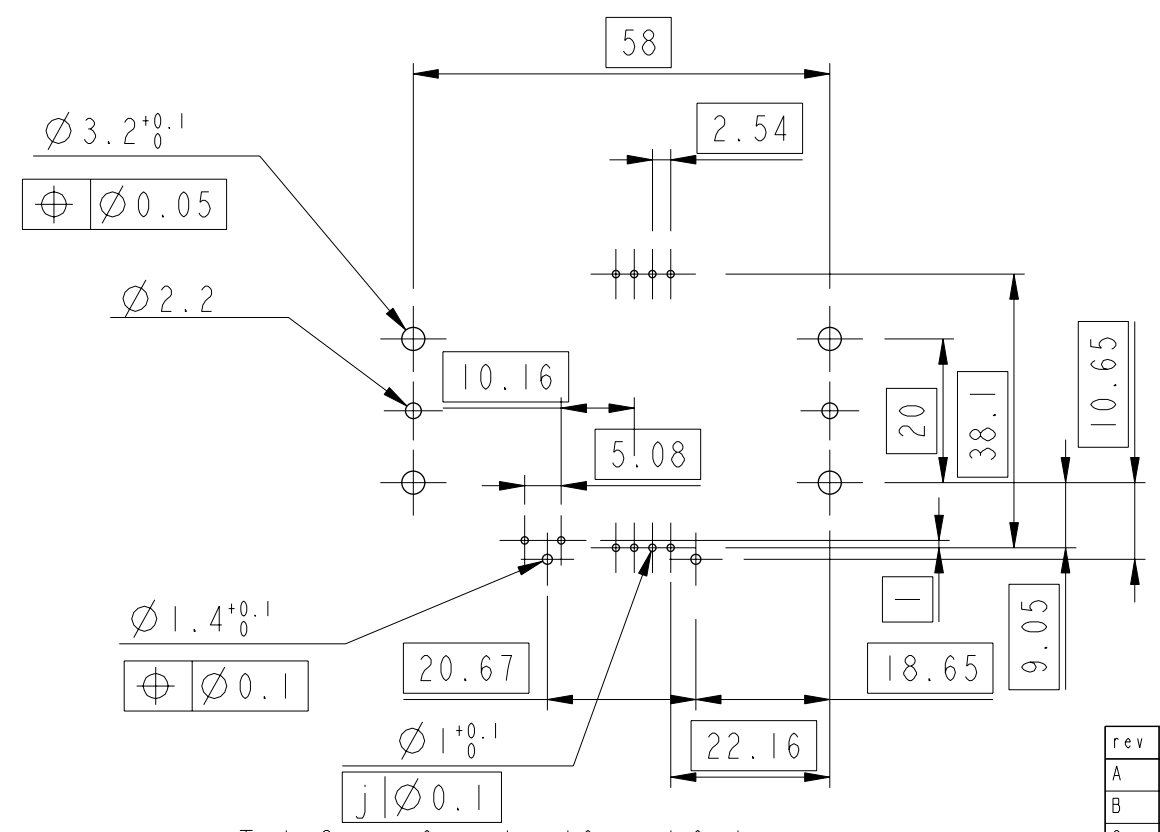
2

3

4



IMPLANTATION C.1
PCB FOOTPRINT



Tol Gen: 0mm to 10mm ±0.1mm
 10mm to 30mm ±0.15mm
 30mm to 60mm ±0.2mm
 60mm and above ±0.3mm

LEAD FREE VERSION:

"This product meets European Union Directives and other country regulations as described in GS-22-008"

The housing will withstand exposure to 260°C peak temperature for 3-5seconds in a wave solder application with a 1.6mm minimum thick circuit board.

Sn Matte plating on solder tail for Lead Free Versions

CATALOGUE NUMBER	LEAD FREE VERSION
7434L1625S13	7434L1625S13LF

www.fciconnect.com			surface - ISO 1302	tolerance std ISO 406 ISO 1101	projection mm
TOLERANCES UNLESS OTHERWISE SPECIFIED					
Dr	S.Alosius	2002/02/04	ANGULAR	0.x	±
Eng	S.Alosius	2002/02/04		LINEAR	0.xx
Chr	S.S.CHERIAN	2008/06/14	0° ±°	0.xxx	±
Appr	S.S.CHERIAN	2008/06/14	Product family	SMARTCARD	Spec ref
FCI			title SMARTCARD ASSEMBLY		Rev.
			L16		VJW54613
			catalog no	7434L1625S13	CUSTOMER
					sheet 1 of 2

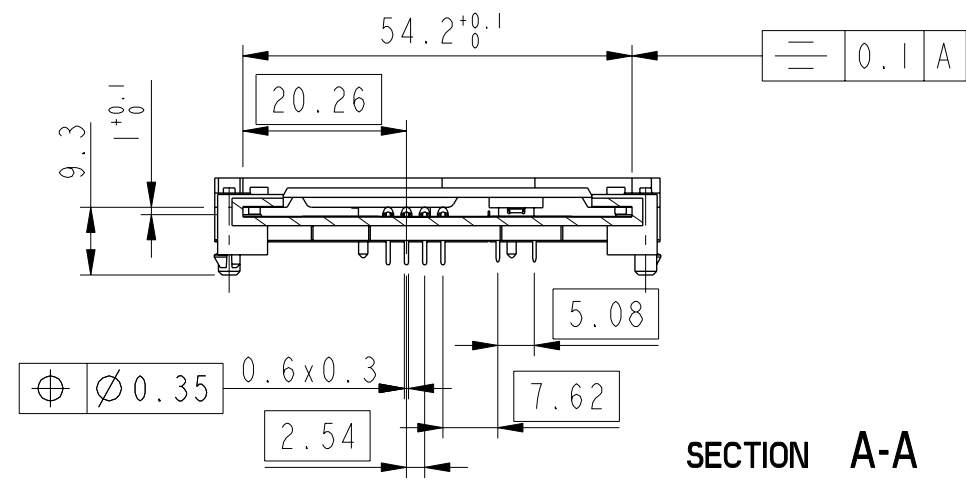
rev	ecn no	dr	date
A	F20307	SAI	2002/02/04
B	105-0181	NT	2005/09/27
C	108-0074	SSC	2008/06/14
-	-	-	-
-	-	-	-
-	-	-	-
-	-	-	-



Copyright FCI.



Copyright FCI.



www.fciconnect.com		surface - ✓ ISO 1302		tolerance std ISO 406 ISO 1101		projection A3		mm ↔	
TOLERANCES UNLESS OTHERWISE SPECIFIED									
Dr	S.Alosius	2002/02/04	ANGULAR	LINEAR	0.X	±	size A3	Scale 1:1	
Eng	S.Alosius	2002/02/04			0.XX	±		ECN 108-0074	
Chr	S.S.CHERIAN	2008/06/14			0.XXX	±			
Appr	S.S.CHERIAN	2008/06/14	Product family		SMARTCARD		Spec ref -		
FCI		title SMARTCARD ASSEMBLY			dwg no VJW54613		Rev. C		
		catalog no 7434L1625S13			CUSTOMER		sheet 2 of 2		

REV F - 2006-04-17