



Chipsmall Limited consists of a professional team with an average of over 10 year of expertise in the distribution of electronic components. Based in Hongkong, we have already established firm and mutual-benefit business relationships with customers from,Europe,America and south Asia,supplying obsolete and hard-to-find components to meet their specific needs.

With the principle of “Quality Parts,Customers Priority,Honest Operation,and Considerate Service”,our business mainly focus on the distribution of electronic components. Line cards we deal with include Microchip,ALPS,ROHM,Xilinx,Pulse,ON,Everlight and Freescale. Main products comprise IC,Modules,Potentiometer,IC Socket,Relay,Connector.Our parts cover such applications as commercial,industrial, and automotives areas.

We are looking forward to setting up business relationship with you and hope to provide you with the best service and solution. Let us make a better world for our industry!



Contact us

Tel: +86-755-8981 8866 Fax: +86-755-8427 6832

Email & Skype: info@chipsmall.com Web: www.chipsmall.com

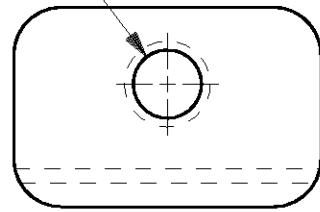
Address: A1208, Overseas Decoration Building, #122 Zhenhua RD., Futian, Shenzhen, China



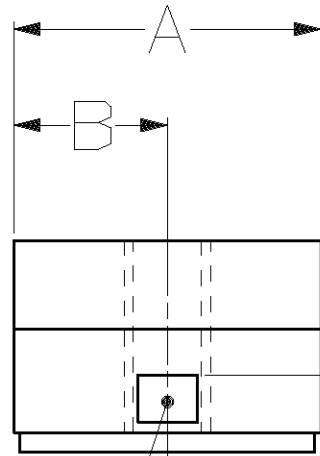
THIS DRAWING IS UNPUBLISHED. RELEASED FOR PUBLICATION, 19
 © COPYRIGHT 19 BY AMP INCORPORATED. ALL INTERNATIONAL RIGHTS RESERVED.

LOC	DIST	P	F	REVISIONS				
				ZONE	LTR	DESCRIPTION	DATE	APPD
GP	00				E	REV PER OU1D-0274-00	11/05/01	JR

THREAD
SEE TABLE

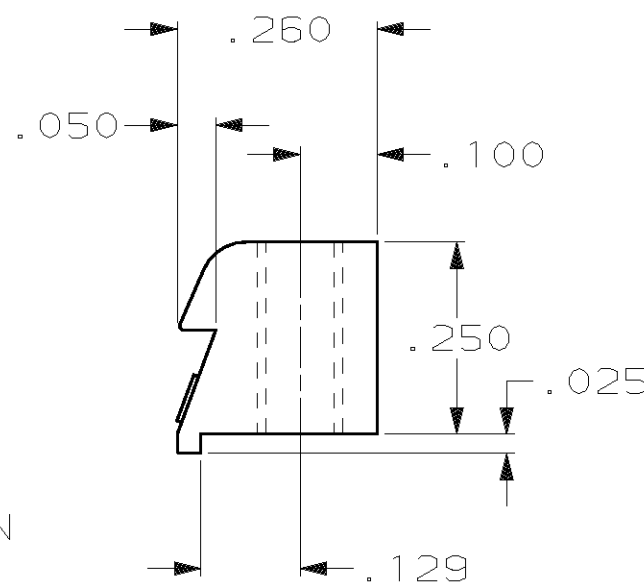


LATCHING BLOCK
QTY: 2
MATL: ZINC ALLOY



.115

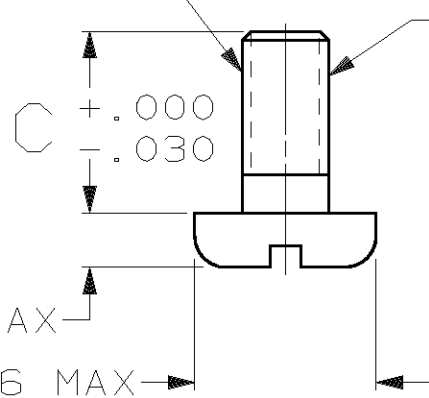
.060 REF



1. PARTS PACKAGED UNASSEMBLED.
2. PARTS PACKAGED AS A UNIT KIT.
3. PACKAGED 50 UNIT KITS PER PACKAGE.
4. OBSOLETE PART NUMBER.

THREAD
SEE TABLE

THREAD IDENTIFICATION
LOCATED IN THIS AREA



PAN HEAD SCREW
QTY: 2
MATL: COLD ROLLED STEEL
PER ASTM A108
FINISH: ZINC PLATED PER ASTM
B633, TYPE III, CLASS
SC1, CLEAR CHROMATE

3	M3X0.5	.236	.200	.400	1 THRU 4	4	745007-7
2	#4-40	.188	.265	.530	5	4	745007-6
2	#4-40	.188	.200	.400	1 THRU 4		745007-5
2	M3X0.5	.177	.265	.530	5	4	745007-4
2	M3X0.5	.177	.200	.400	1 THRU 4	4	745007-3
2	M3X0.5	.236	.265	.530	5	4	745007-2
2	M3X0.5	.236	.200	.400	1 THRU 4		745007-1
PACKAGING	THREAD SIZE	C	B	A	SIZE		PART NO

DO NOT SCALE PRINT. UNLESS SPECIFIED DIMENSIONS IN INCHES TOLERANCES ON: 2 PLC DEC ± - 3 PLC DEC ± .010 ANGLES ± -	DR 5-20-88 C RICHARD CHK 5-20-88 S WELDON APPD 5-23-88 V KUMAR APPD 5-20-88 R WHYNE PRODUCT SPEC -	AMP INCORPORATED Harrisburg, Pa. 17105						
MATERIAL SEE CALLOUTS	NAME KIT, LATCHING BLOCK, R5 449 TYPE, WITH SCREWS, AMPLIMITE®							
FINISH SEE CALLOUTS	APPLICATION SPEC -	<table border="1"> <tr> <td>SIZE B</td> <td>FSCM NO 00779</td> <td>DRAWING NO 745007</td> </tr> <tr> <td>SCALE 4:1</td> <td colspan="2">SHEET 1 OF 1</td> </tr> </table>	SIZE B	FSCM NO 00779	DRAWING NO 745007	SCALE 4:1	SHEET 1 OF 1	
SIZE B	FSCM NO 00779	DRAWING NO 745007						
SCALE 4:1	SHEET 1 OF 1							
WEIGHT -								