



Chipsmall Limited consists of a professional team with an average of over 10 year of expertise in the distribution of electronic components. Based in Hongkong, we have already established firm and mutual-benefit business relationships with customers from,Europe,America and south Asia,supplying obsolete and hard-to-find components to meet their specific needs.

With the principle of “Quality Parts,Customers Priority,Honest Operation,and Considerate Service”,our business mainly focus on the distribution of electronic components. Line cards we deal with include Microchip,ALPS,ROHM,Xilinx,Pulse,ON,Everlight and Freescale. Main products comprise IC,Modules,Potentiometer,IC Socket,Relay,Connector.Our parts cover such applications as commercial,industrial, and automotives areas.

We are looking forward to setting up business relationship with you and hope to provide you with the best service and solution. Let us make a better world for our industry!



Contact us

Tel: +86-755-8981 8866 Fax: +86-755-8427 6832

Email & Skype: info@chipsmall.com Web: www.chipsmall.com

Address: A1208, Overseas Decoration Building, #122 Zhenhua RD., Futian, Shenzhen, China



DRAWING MADE IN THIRD ANGLE PROJECTION

3

2

1

LOC GP DIST 00

© COPYRIGHT 1980, 81, 82 BY AMP INCORPORATED, HARRISBURG, PA. ALL INTERNATIONAL RIGHTS RESERVED. AMP INCORPORATED PRODUCTS COVERED BY U. S. AND FOREIGN PATENTS AND/OR PATENTS PENDING.

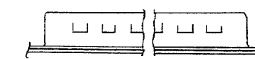
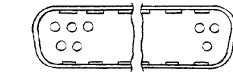
REVISIONS				DATE	APPROVED
P	F	ZONE	LTR	DESCRIPTION	
		A		REVISED PER EC 0S13-0023-03	14MAY83 JG

OBSOLETE ~~745036-1~~
745036-2

1. AS SHOWN
2. SAME AS -1 EXCEPT:
2. PLUG FRONT HAS GROUNDING INDENTS AS SHOWN IN DETAIL
3. SHELL FINISH IS $0.002-0.004$ TYP BRIGHT TIN OVER BRIGHT NICKEL FLASH

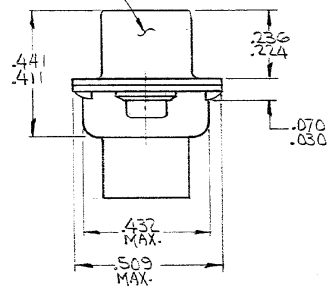
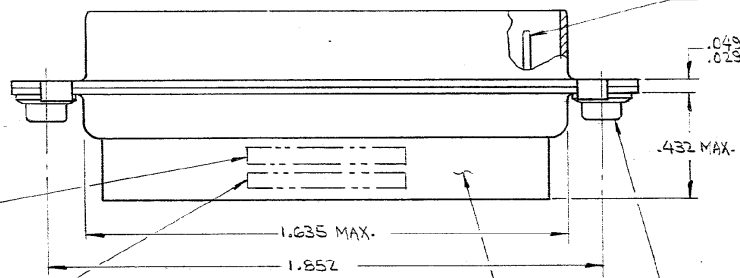
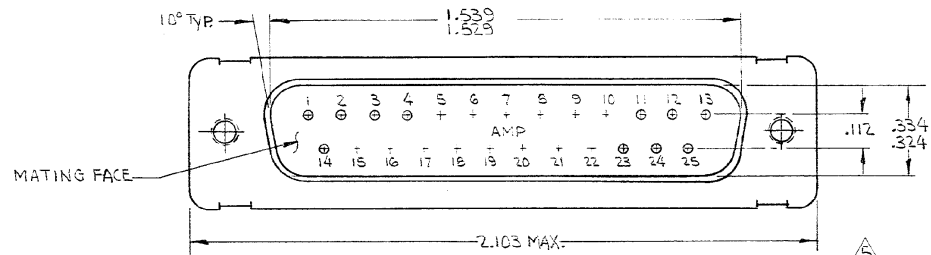
OBSOLETE ~~745036-3~~

1. SAME AS -2 EXCEPT:
2. PLUG FRONT SHELL DOES NOT HAVE GROUNDING INDENTS



GROUNDING INDENTS
(-2 ONLY)

SHELL: STEEL, ZINC PLATED PER QQ-Z-325, TYPE II, CLASS 3, YELLOW CHROMATE.



INSERT: GLASS FILLED BLACK NYLON, (SELF EXTINGUISHING)

#4-40 STEEL CLINCH NUT, 2 PLACES.

1. THIS PLUG WILL MATE WITH ANY SIZE 3, 25 POS. RECEPTACLE IN AMPLIMITE SERIES & CONFORMS TO AMP SPEC 108-10,020.
 2. THIS PLUG ACCEPTS SIZE 20 PIN CONTACTS. RETENTION TINES ARE AN INTEGRAL PART OF INSERT.
 3. WIRE INSULATION SIZE OF .068 DIA. MAX. IS RECOMMENDED FOR USE WITH THIS PLUG.
 4. AMP TOOL No. 91067-2 IS RECOMMENDED FOR INSERTION / REMOVAL OF CONTACTS.
- CONTACTS ARE SHOWN FOR ILLUSTRATION ONLY, NOT PART OF CONNECTOR PACKAGE, MUST BE ORDERED SEPARATELY.

UNLESS OTHERWISE SPECIFIED DIMENSIONS ARE IN INCHES.		CONTRACT NO		PART NO	
TOLERANCES ON: DECIMALS ±.005 ANGLES ±.2°		DR <i>[Signature]</i> 11/17/80		AMP INCORPORATED Harrisburg, Pa.	
MATERIAL SEE CALLOUT		CHKD <i>[Signature]</i> 11/780		NAME PLUG, SIZE 3, 25 POSITION; AMPLIMITE HDP/20 SERIES (W/ 4-40 CLINCH NUTS)	
FINISH SEE CALLOUT		APPD <i>[Signature]</i> 1-17-80		SIZE CODE IDENT NO DRAWING NO C 00779 745036	
		APPD <i>[Signature]</i> 1-19-80		SCALE <i>[Signature]</i> SHEET	
		OSGN APPD			
		OTHER APPD			

CUSTOMER DRAWING