



Chipsmall Limited consists of a professional team with an average of over 10 year of expertise in the distribution of electronic components. Based in Hongkong, we have already established firm and mutual-benefit business relationships with customers from,Europe,America and south Asia,supplying obsolete and hard-to-find components to meet their specific needs.

With the principle of “Quality Parts,Customers Priority,Honest Operation,and Considerate Service”,our business mainly focus on the distribution of electronic components. Line cards we deal with include Microchip,ALPS,ROHM,Xilinx,Pulse,ON,Everlight and Freescale. Main products comprise IC,Modules,Potentiometer,IC Socket,Relay,Connector.Our parts cover such applications as commercial,industrial, and automotives areas.

We are looking forward to setting up business relationship with you and hope to provide you with the best service and solution. Let us make a better world for our industry!



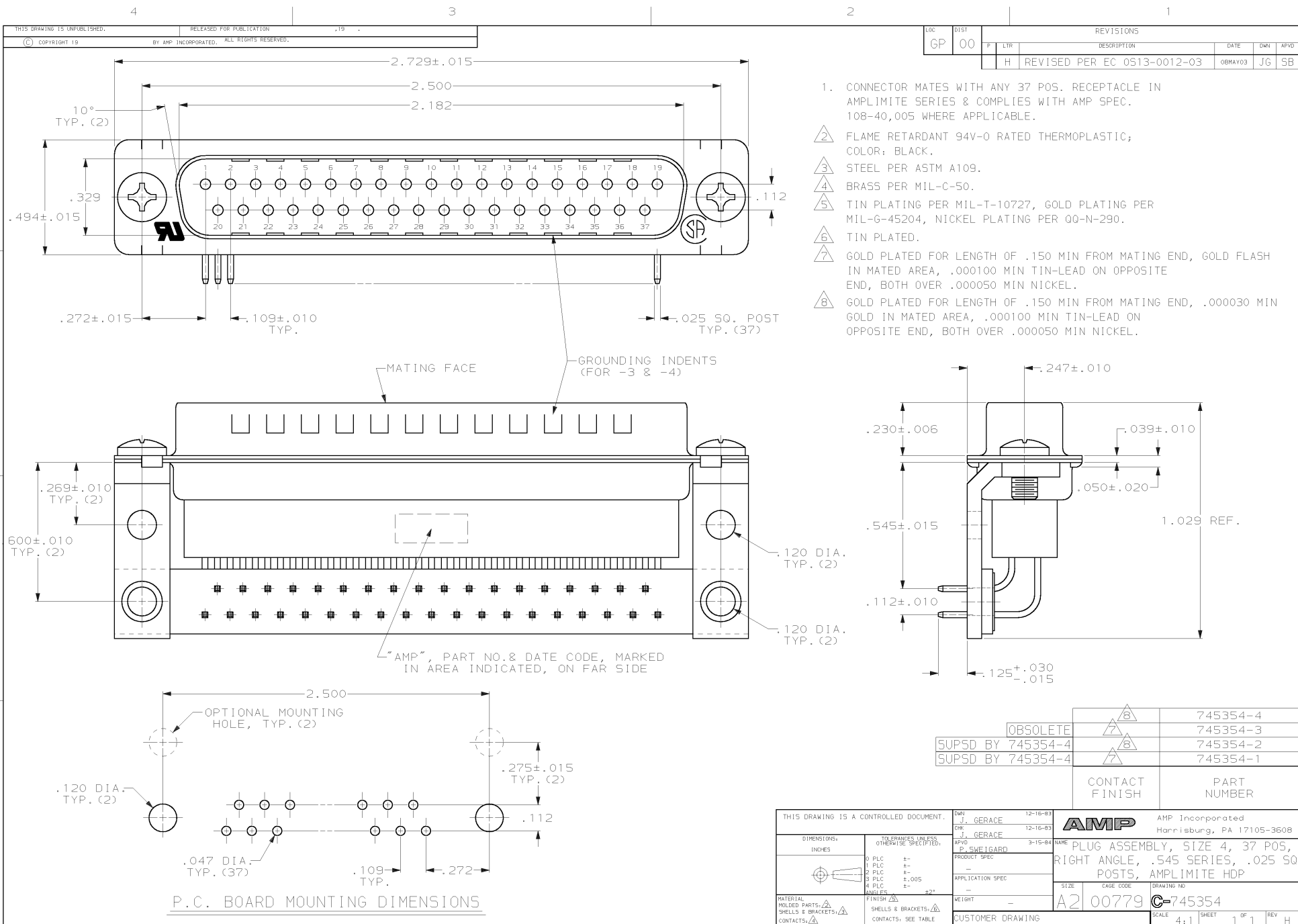
## Contact us

Tel: +86-755-8981 8866 Fax: +86-755-8427 6832

Email & Skype: info@chipsmall.com Web: www.chipsmall.com

Address: A1208, Overseas Decoration Building, #122 Zhenhua RD., Futian, Shenzhen, China





LOC	DIST	REVISIONS			
P	LTR	DESCRIPTION	DATE	OWN	APVD
GP	00	H	REVISED PER EC 0513-0012-03	08MAY03	JG SB

1. CONNECTOR MATES WITH ANY 37 POS. RECEPTACLE IN AMPLIMITE SERIES & COMPLIES WITH AMP SPEC. 108-40,005 WHERE APPLICABLE.
- △ FLAME RETARDANT 94V-0 RATED THERMOPLASTIC; COLOR: BLACK.
- △ STEEL PER ASTM A109.
- △ BRASS PER MIL-C-50.
- △ TIN PLATING PER MIL-T-10727, GOLD PLATING PER MIL-6-45204, NICKEL PLATING PER QQ-N-290.
- △ TIN PLATED.
- △ GOLD PLATED FOR LENGTH OF .150 MIN FROM MATING END, GOLD FLASH IN MATED AREA, .000100 MIN TIN-LEAD ON OPPOSITE END, BOTH OVER .000050 MIN NICKEL.
- △ GOLD PLATED FOR LENGTH OF .150 MIN FROM MATING END, .000030 MIN GOLD IN MATED AREA, .000100 MIN TIN-LEAD ON OPPOSITE END, BOTH OVER .000050 MIN NICKEL.

	△	745354-4
OBSOLETE	△	745354-3
SUPSD BY 745354-4	△	745354-2
SUPSD BY 745354-4	△	745354-1

CONTACT FINISH	PART NUMBER
----------------	-------------

THIS DRAWING IS A CONTROLLED DOCUMENT.		DWN J. GERACE 12-16-93 CHG J. GERACE 12-16-93 APVD P. SWENIGARD 3-15-94 NAME PRODUCT SPEC APPLICATION SPEC WEIGHT CUSTOMER DRAWING	<b>AMP</b> AMP Incorporated Harrisburg, PA 17105-3608 <b>PLUG ASSEMBLY, SIZE 4, 37 POS, RIGHT ANGLE, .545 SERIES, .025 SQ POSTS, AMPLIMITE HDP</b> SIZE A2 CASE CODE 00779 DRAWING NO. C-745354 SCALE 4:1 SHEET 1 OF 1 REV H
DIMENSIONS: INCHES TOLERANCES UNLESS OTHERWISE SPECIFIED: 0 PLC ± 1 PLC ± 2 PLC ± 3 PLC ±.005 4 PLC ± ANGLES ±2°	MATERIAL: MOULDED PARTS: △ SHELLS & BRACKETS: △ CONTACTS: △ FINISH: △ CONTACTS: SEE TABLE		