



Chipsmall Limited consists of a professional team with an average of over 10 year of expertise in the distribution of electronic components. Based in Hongkong, we have already established firm and mutual-benefit business relationships with customers from,Europe,America and south Asia,supplying obsolete and hard-to-find components to meet their specific needs.

With the principle of “Quality Parts,Customers Priority,Honest Operation,and Considerate Service”,our business mainly focus on the distribution of electronic components. Line cards we deal with include Microchip,ALPS,ROHM,Xilinx,Pulse,ON,Everlight and Freescale. Main products comprise IC,Modules,Potentiometer,IC Socket,Relay,Connector.Our parts cover such applications as commercial,industrial, and automotives areas.

We are looking forward to setting up business relationship with you and hope to provide you with the best service and solution. Let us make a better world for our industry!



## Contact us

Tel: +86-755-8981 8866 Fax: +86-755-8427 6832

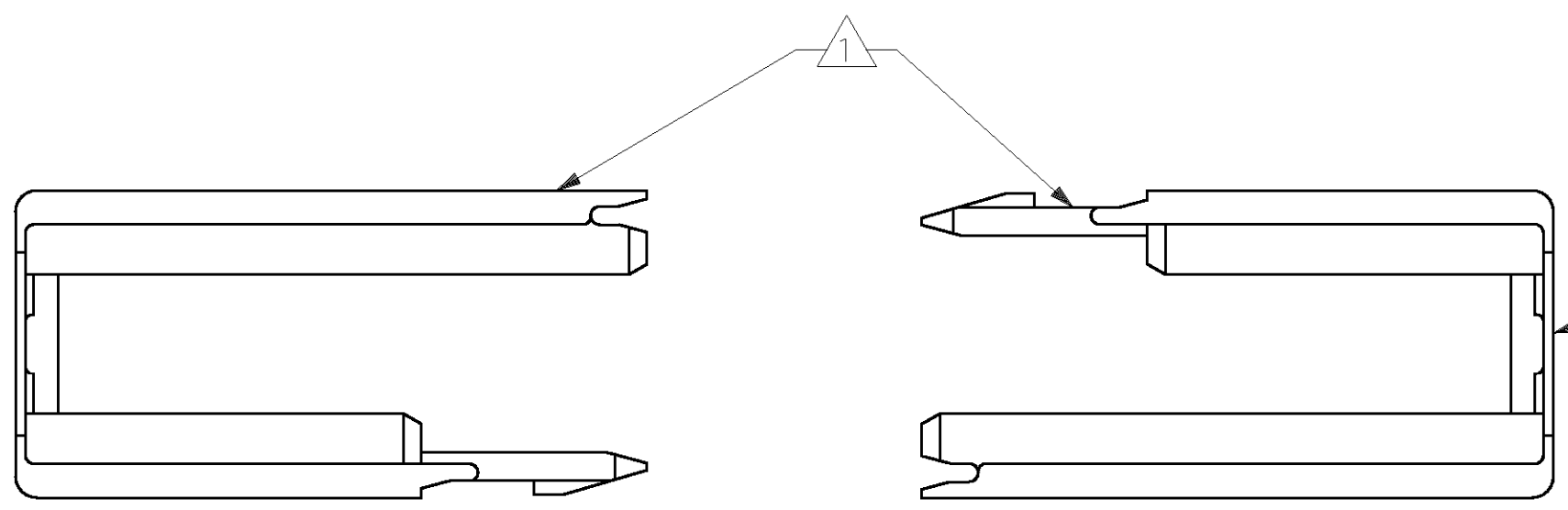
Email & Skype: info@chipsmall.com Web: www.chipsmall.com

Address: A1208, Overseas Decoration Building, #122 Zhenhua RD., Futian, Shenzhen, China

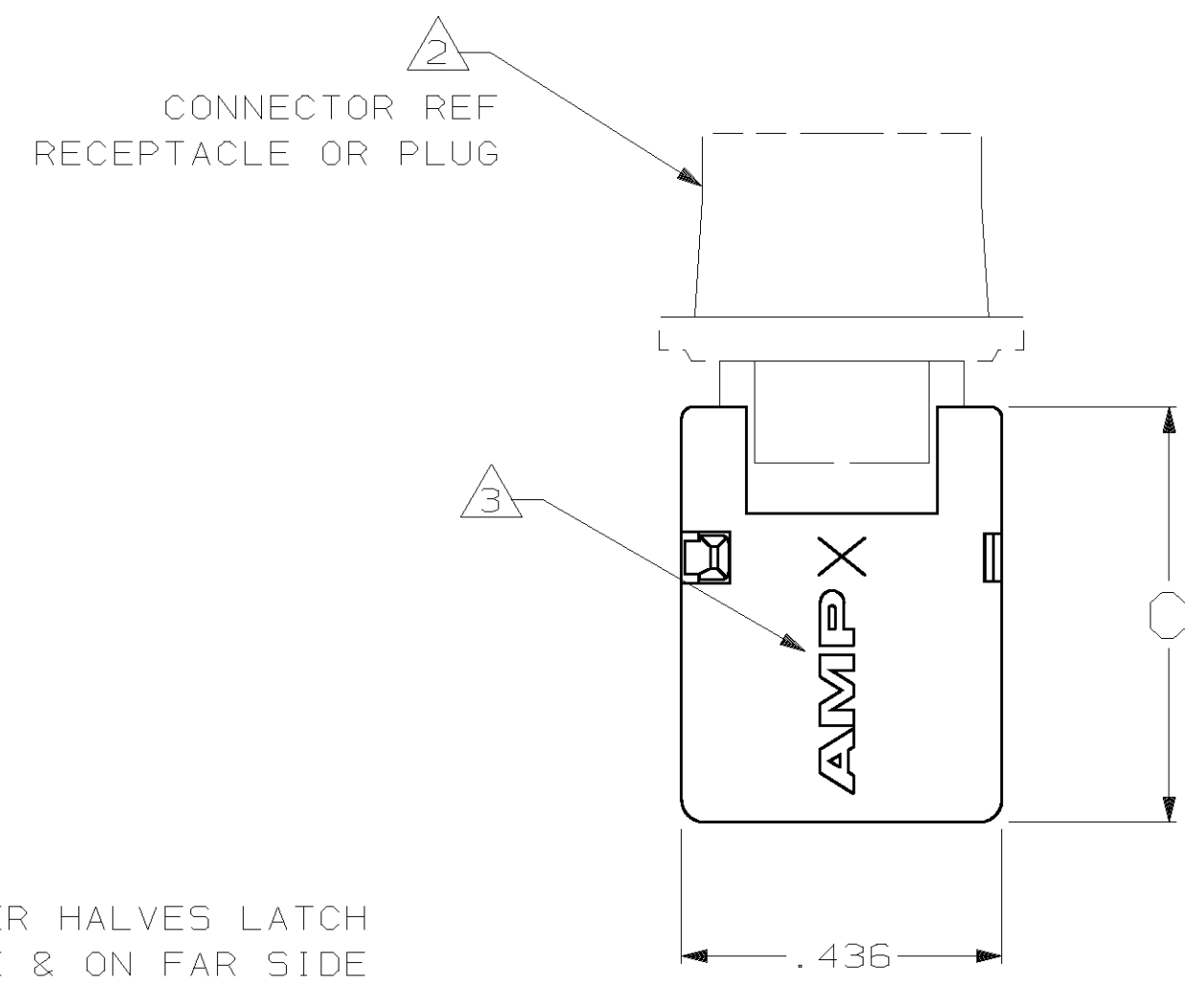
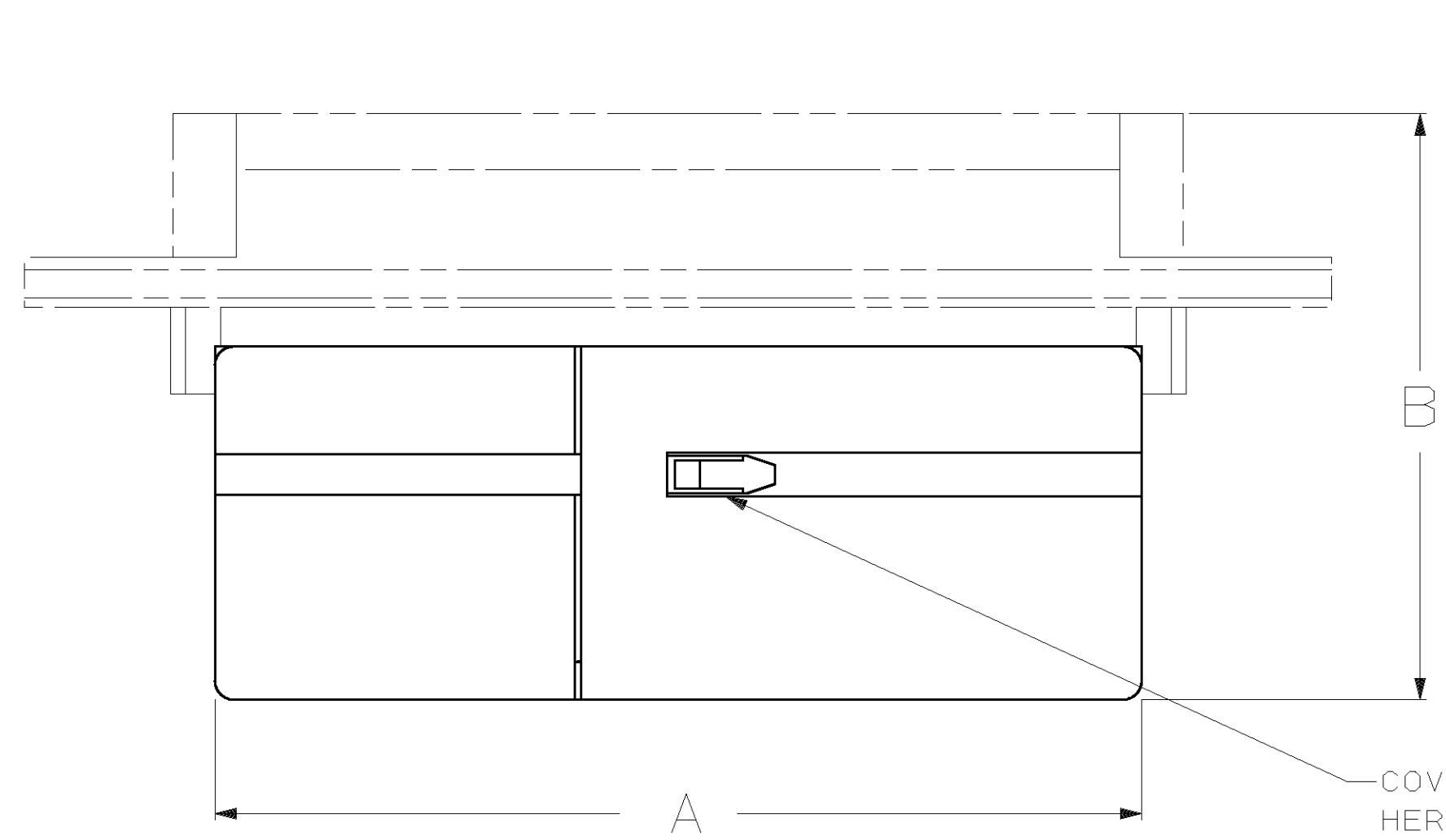


THIS DRAWING IS UNPUBLISHED.  
 RELEASED FOR PUBLICATION  
 BY AMP INCORPORATED, ALL RIGHTS RESERVED.

LOC	DIST	REVISIONS			
P	LTR	DESCRIPTION	DATE	DWN	APVD
GP	00				
E		REV PER EC OUE0-0002-01	15 JAN 02	JR	JG



EACH KIT CONSISTS OF 2 IDENTICAL HALVES, WHICH SNAP TOGETHER OVER CONNECTOR.



- ① PARTS TO BE PACKAGED UNASSEMBLED.
- ② BACK COVER FITS HDE-20 TYPE CONNECTORS, BOTH ALL-PLASTIC & METAL SHELL ASSEMBLIES.
- ③ "AMP" AND SIZE NUMBER MOLDED.
- ④ THERMOPLASTIC, UNFILLED, 94V-1 RATED, BLACK.
- ⑤ OBSOLETE

OBSOLETE	SPECIAL		.934	2	15	1-745530-0	INDIVIDUAL KIT NO		
	.565	.540						RCPT	PLUG
	.565		.902	.937	1.482	3	25	⑤ 745530-7	745530-3
	.565		.902	.937	.934	2	15	⑤ 745530-6	745530-2
	.565		.902	.937	.610	1	9	745530-5	745530-1
	C	B	A	SIZE	POSN	BULK PACKED KIT NO	INDIVIDUAL KIT NO		

THIS DRAWING IS A CONTROLLED DOCUMENT FOR AMP INCORPORATED. IT IS SUBJECT TO CHANGE AND THE CONTROLLING ENGINEERING ORGANIZATION SHOULD BE CONTACTED FOR THE LATEST REVISION.

DWN	J. GALLUCCI	BG	14 MAY 90	 AMP Incorporated Harrisburg, PA 17105-3608
CHK	J. E. WESTMAN		9 JUL 95	
APVD	J. ASSINI		16 JUL 90	
NAME				
PRODUCT SPEC				KIT, BACK COVER, LOW PROFILE, SLIDE-ON, AMPLIMITETM HDE-20
APPLICATION SPEC				SIZE: A2 CAGE CODE: 00779 DRAWING NO: C-745530
WEIGHT				SCALE: 4:1 SHEET: 1 OF 1 REV: E
CUSTOMER DRAWING				

745530