



Chipsmall Limited consists of a professional team with an average of over 10 year of expertise in the distribution of electronic components. Based in Hongkong, we have already established firm and mutual-benefit business relationships with customers from,Europe,America and south Asia,supplying obsolete and hard-to-find components to meet their specific needs.

With the principle of “Quality Parts,Customers Priority,Honest Operation,and Considerate Service”,our business mainly focus on the distribution of electronic components. Line cards we deal with include Microchip,ALPS,ROHM,Xilinx,Pulse,ON,Everlight and Freescale. Main products comprise IC,Modules,Potentiometer,IC Socket,Relay,Connector.Our parts cover such applications as commercial,industrial, and automotives areas.

We are looking forward to setting up business relationship with you and hope to provide you with the best service and solution. Let us make a better world for our industry!



Contact us

Tel: +86-755-8981 8866 Fax: +86-755-8427 6832

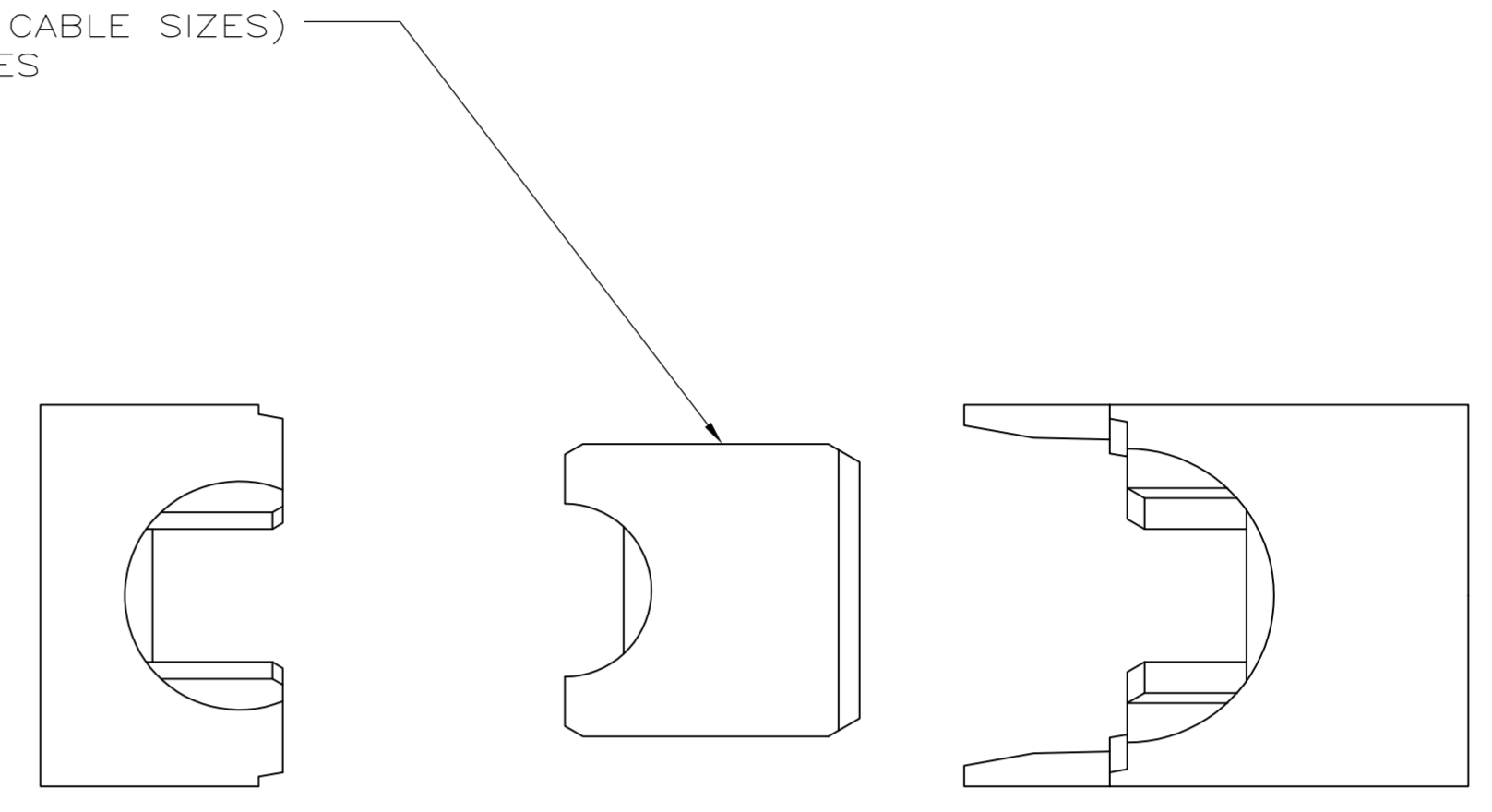
Email & Skype: info@chipsmall.com Web: www.chipsmall.com

Address: A1208, Overseas Decoration Building, #122 Zhenhua RD., Futian, Shenzhen, China

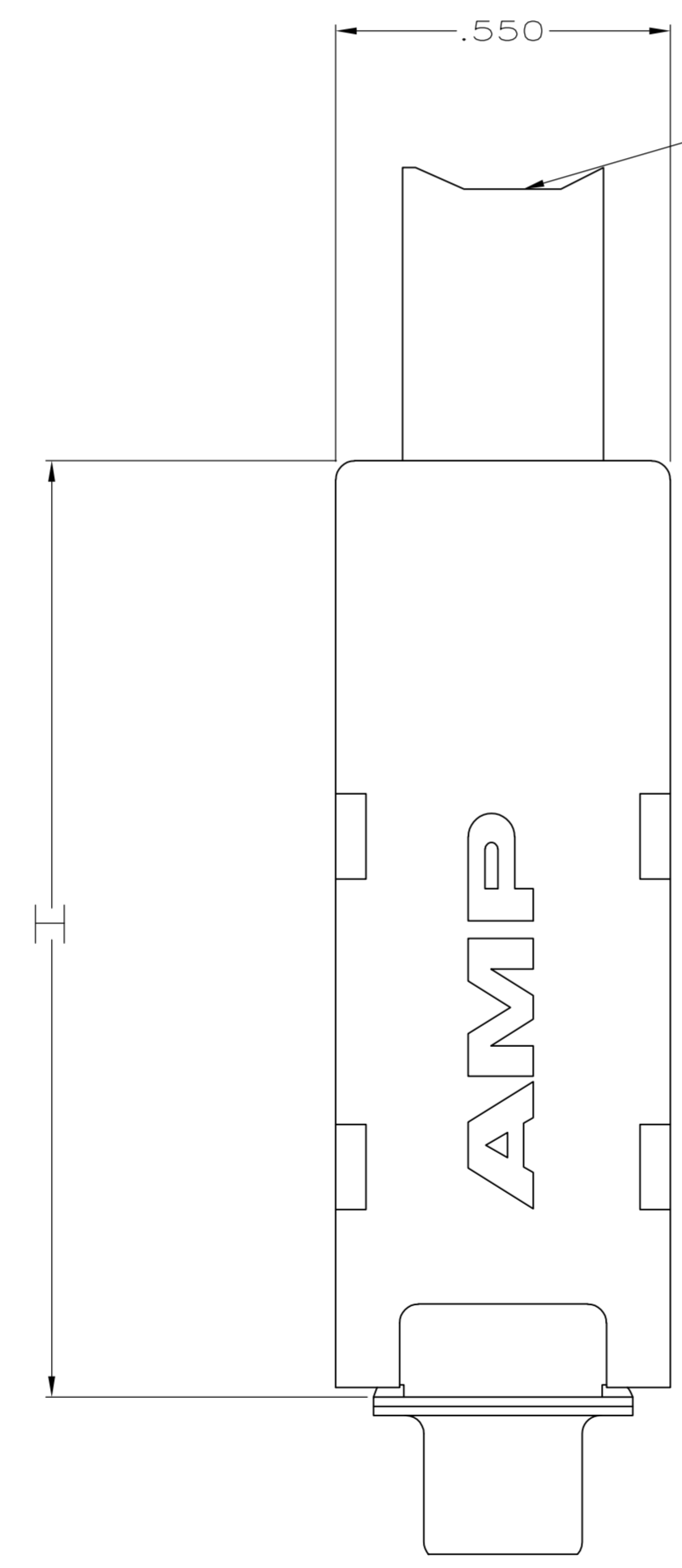
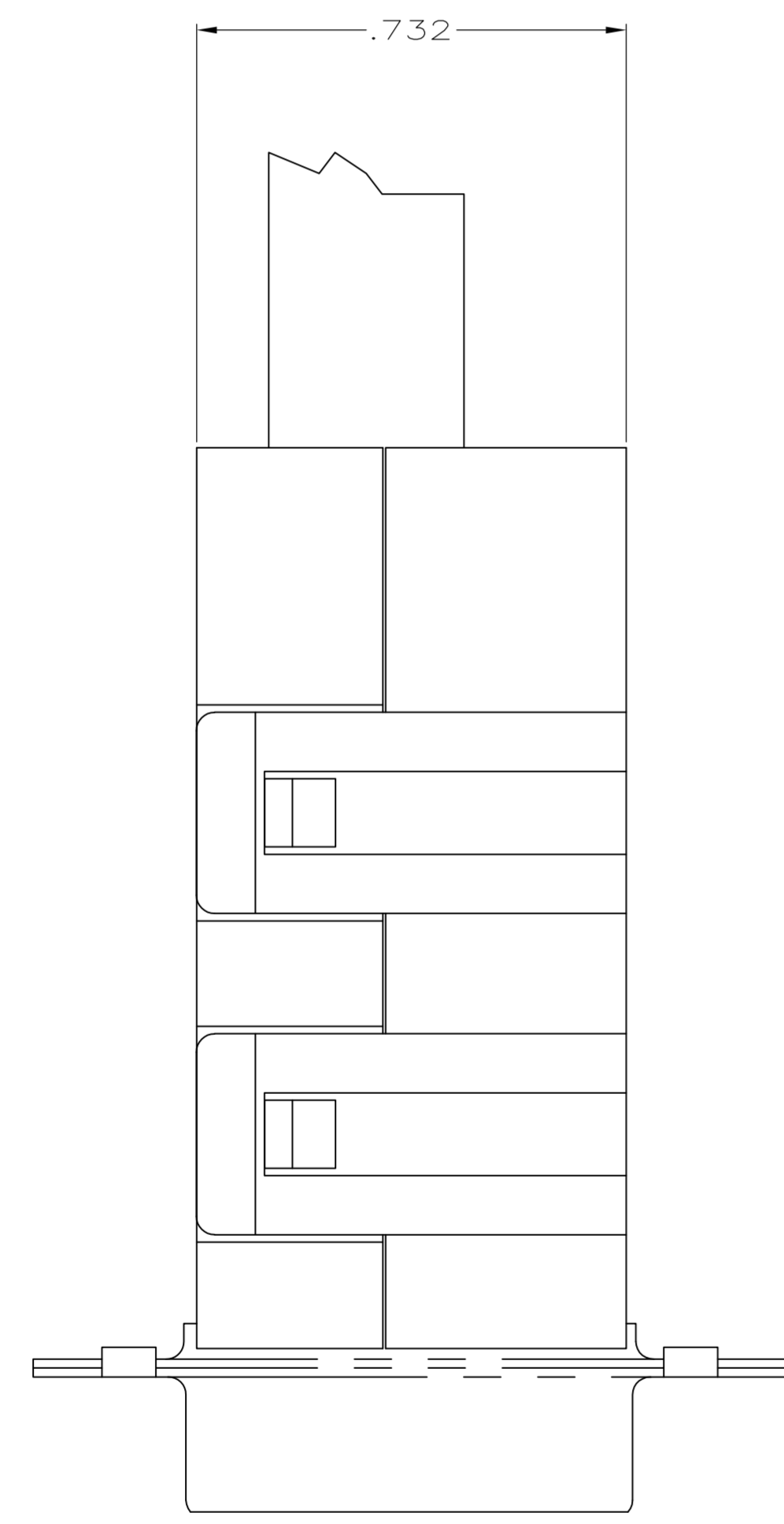


- ① ALL PARTS ARE PACKAGED UNASSEMBLED.
- ② COVERS FIT HDE -20 TYPE CONNECTORS, BOTH PLASTIC & METAL SHELL ASSEMBLIES.
- ③ SIZE NUMBER MOLDED ON ALL PARTS.
- ④ PARTS ASSEMBLE WITHOUT HARDWARE.
- ⑤ KIT CONSISTS OF 2 COVERS & 1 GATE ASSORTMENT.
- ⑥ EACH PART IS INDIVIDUALLY BULK PACKED FOR MULTIPLE KIT ORDERS.

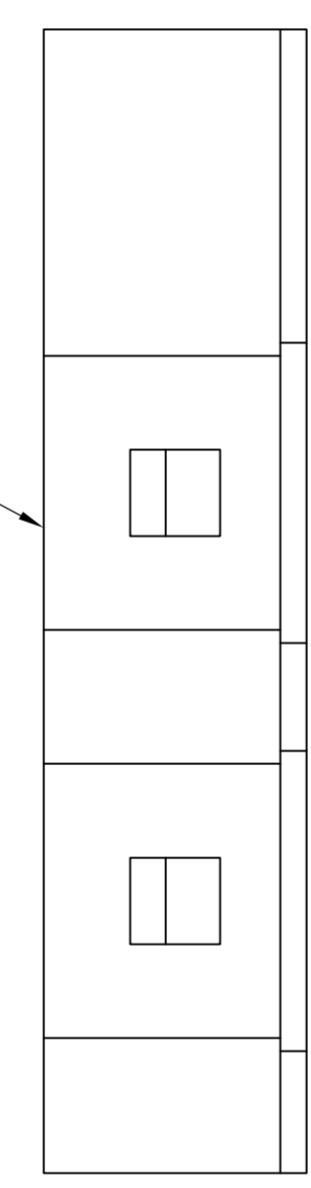
ASSORTED CABLE SUPPORT GATES(FOR VARIETY OF CABLE SIZES)
 SUPPLIED WITH CABLE CLAMP ASSEMBLIES



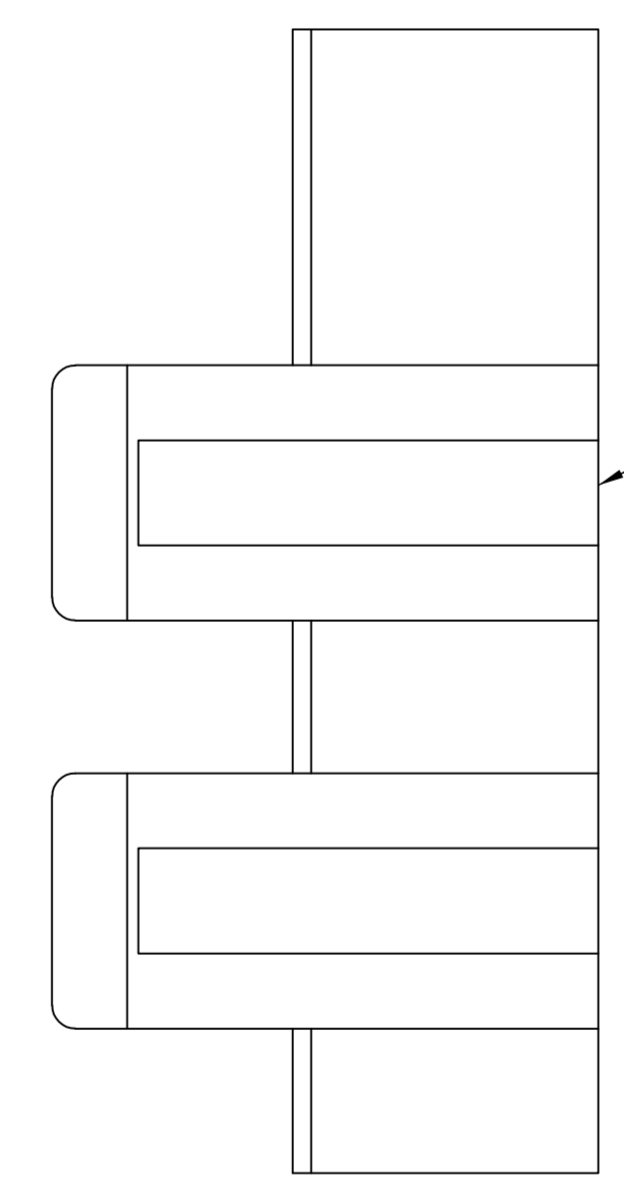
CLAMP ACCOMODATES DISCRETE WIRES OR JACKETED CABLE UP TO .330 INCH DIAMETER



F COVER
 1 REQUIRED
 PER ASSEMBLY



M COVER
 1 REQUIRED
 PER ASSEMBLY



	H
PLUG	1.582
RECEPTACLE	1.533

①	⑥	745547-2
②	⑤	745547-1
PACKAGING		PART NUMBER

THIS DRAWING IS A CONTROLLED DOCUMENT.		DWN	A STAUB_BG	5/12/90
DIMENSIONS: INCHES		CHK		
TOLERANCES UNLESS OTHERWISE SPECIFIED:		APVD		
0 PLC	± .005	PRODUCT SPEC		
1 PLC	± .005	APPLICATION SPEC		
2 PLC	± .005			
3 PLC	± .015			
4 PLC	± .015			
ANGLES	± .015			
MATERIAL	BLACK THERMOPLASTIC	FINISH		
WEIGHT				
CUSTOMER DRAWING		SIZE	A1	CAGE CODE
		DRAWING NO	00779	REV
		SCALE	4:1	SHEET
			1	OF
			1	REV
				B1

STE TE Connectivity

NAME: KIT, LOW PROFILE, 180 DEG CABLE CLAMP, SIZE 1, 9 POSITION, AMPLIMITE™ HDE-20