



Chipsmall Limited consists of a professional team with an average of over 10 year of expertise in the distribution of electronic components. Based in Hongkong, we have already established firm and mutual-benefit business relationships with customers from,Europe,America and south Asia,supplying obsolete and hard-to-find components to meet their specific needs.

With the principle of "Quality Parts,Customers Priority,Honest Operation,and Considerate Service",our business mainly focus on the distribution of electronic components. Line cards we deal with include Microchip,ALPS,ROHM,Xilinx,Pulse,ON,Everlight and Freescale. Main products comprise IC,Modules,Potentiometer,IC Socket,Relay,Connector.Our parts cover such applications as commercial,industrial, and automotives areas.

We are looking forward to setting up business relationship with you and hope to provide you with the best service and solution. Let us make a better world for our industry!



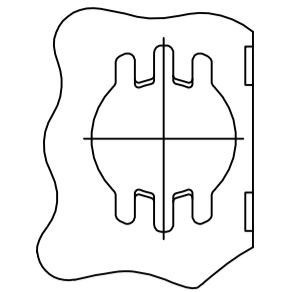
Contact us

Tel: +86-755-8981 8866 Fax: +86-755-8427 6832

Email & Skype: info@chipsmall.com Web: www.chipsmall.com

Address: A1208, Overseas Decoration Building, #122 Zhenhua RD., Futian, Shenzhen, China

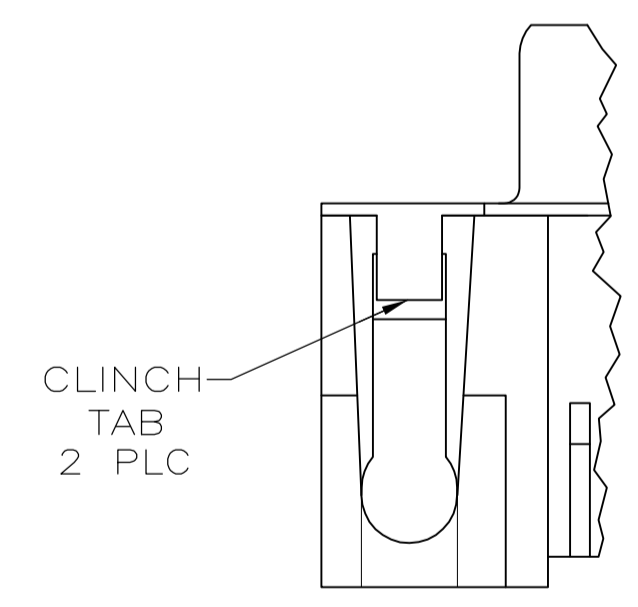
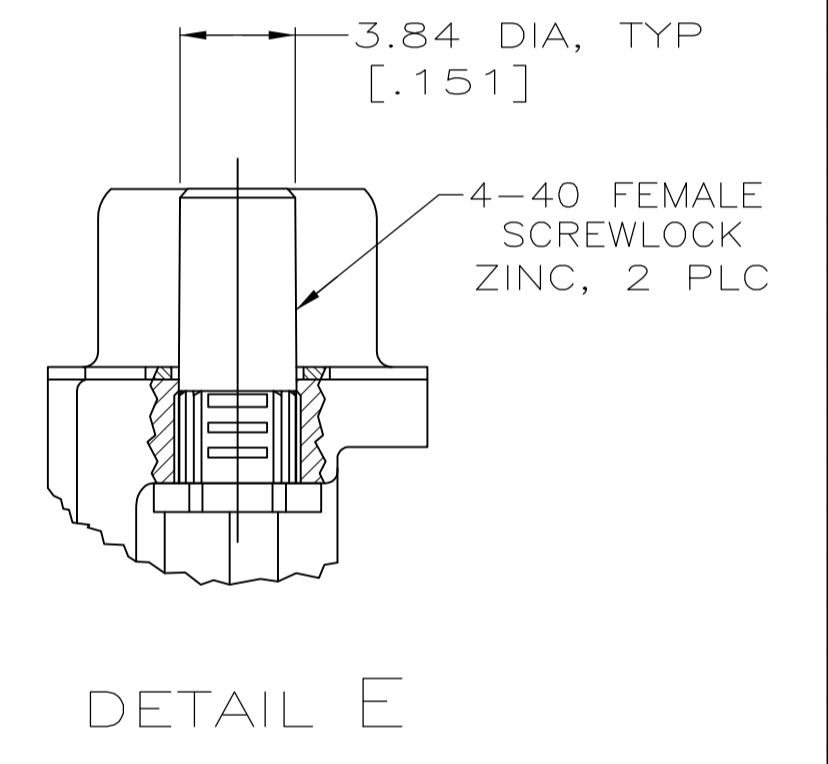
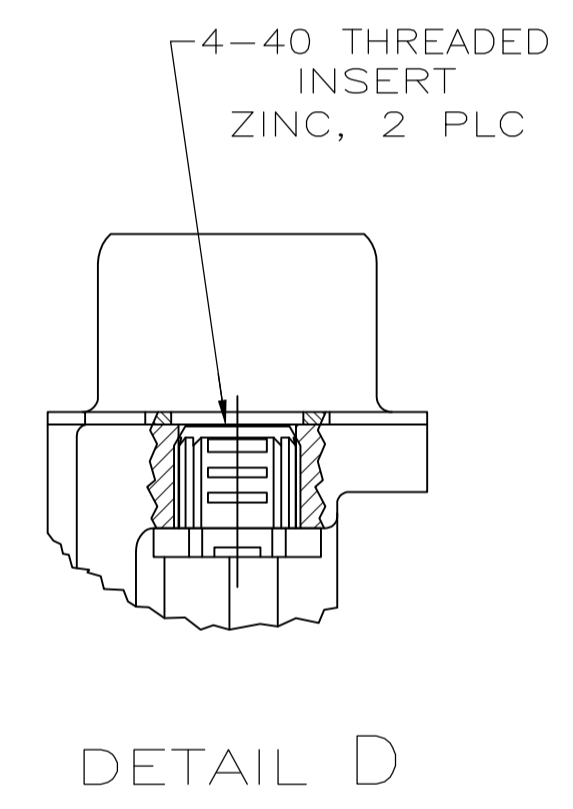
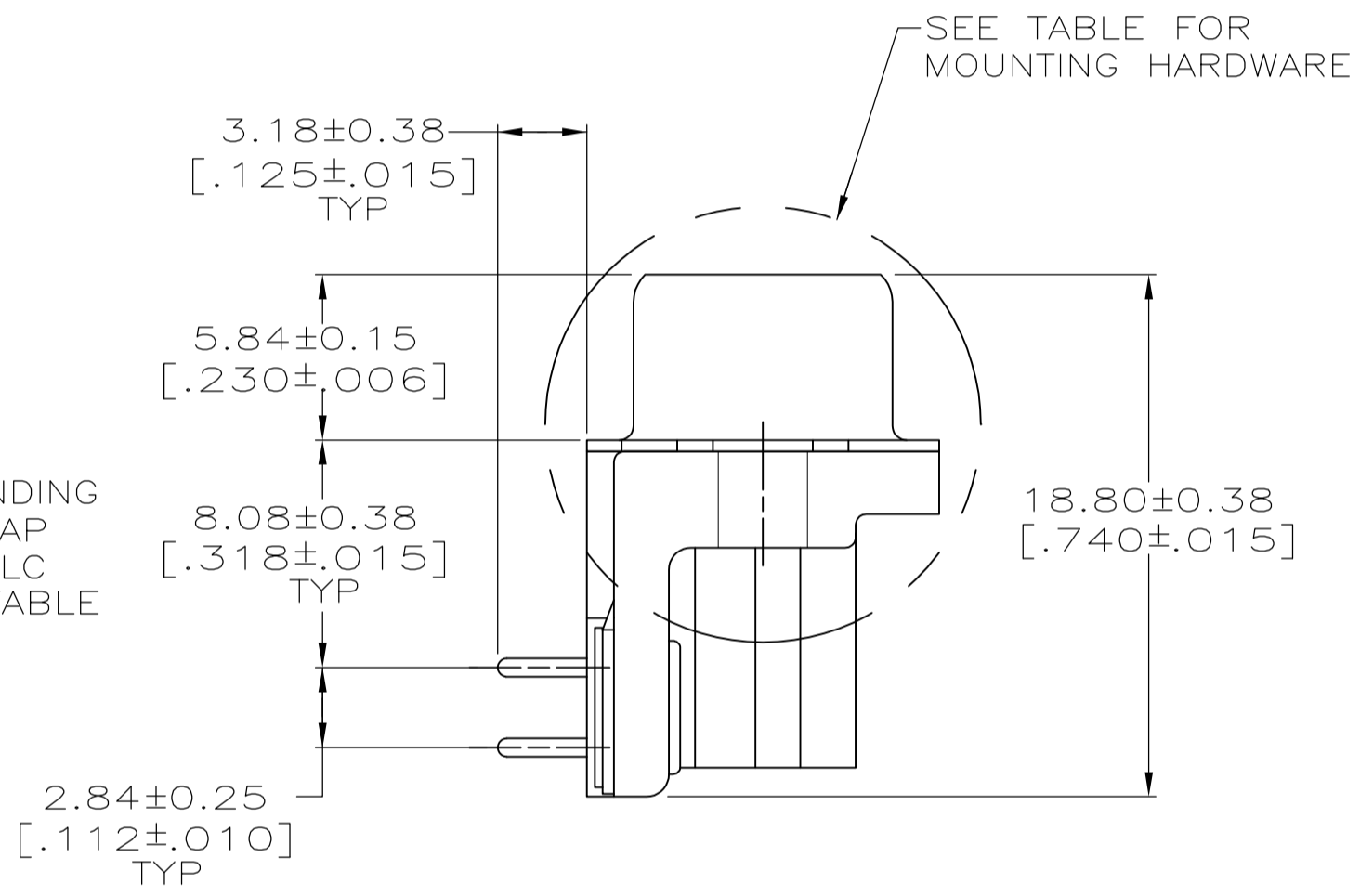
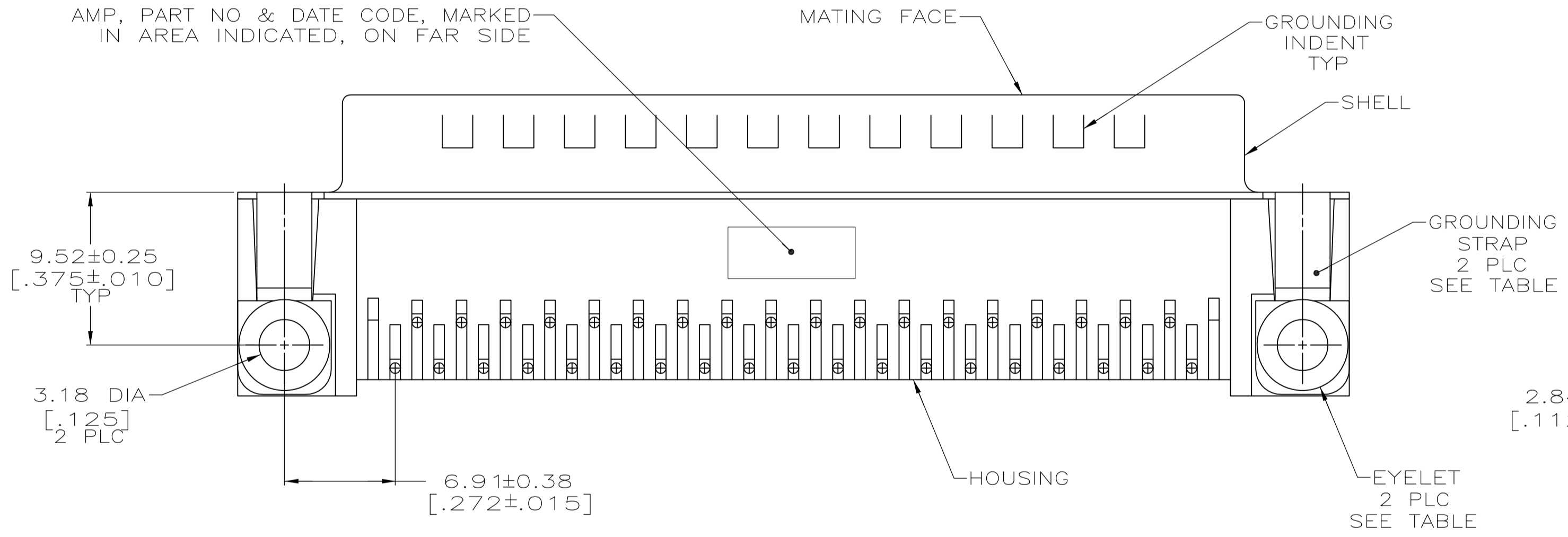
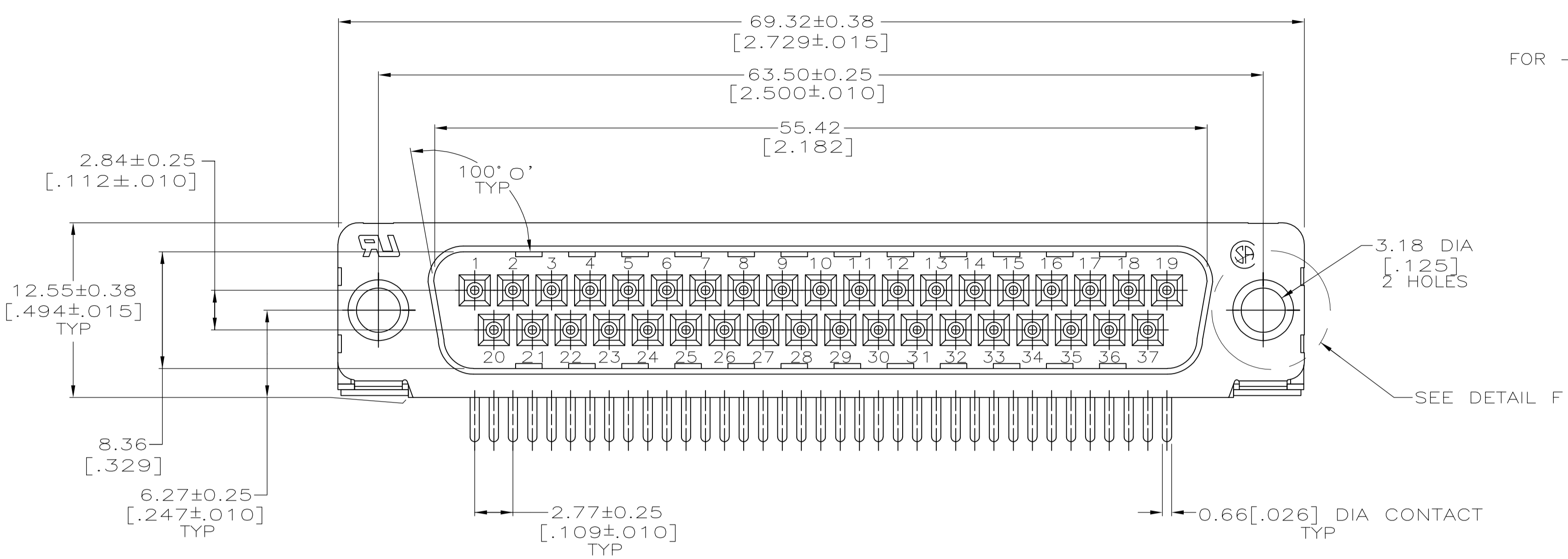




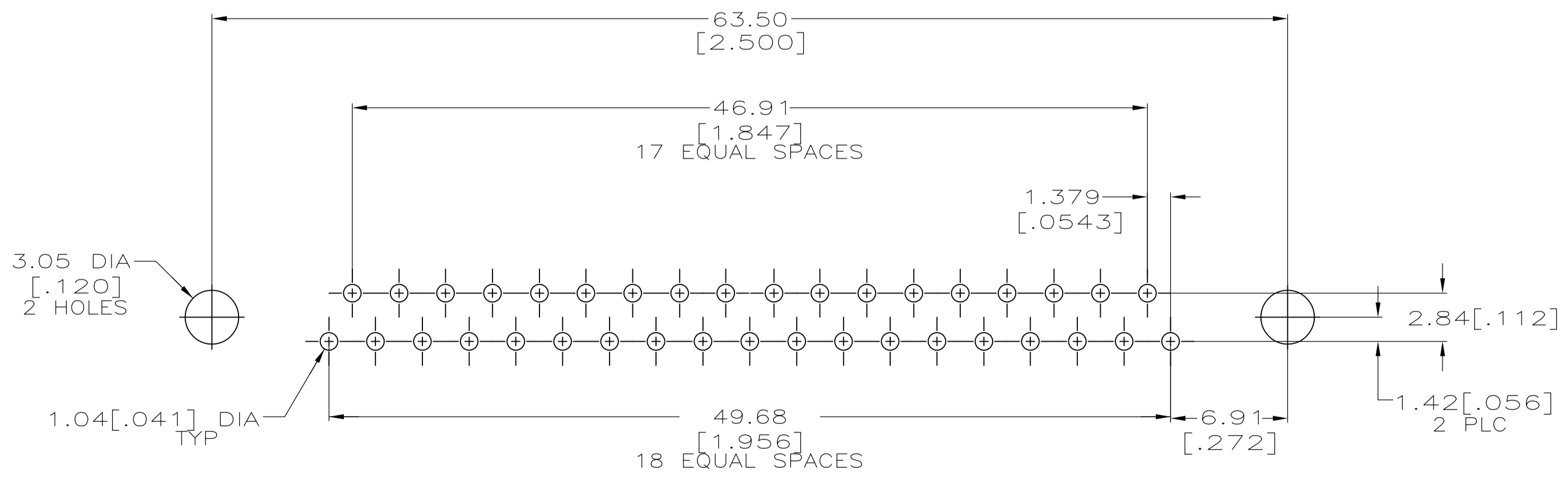
FOR -5, -6, -11 AND -12 ONLY

DETAIL F
2 PLC

- 1 HOUSING: BLACK NYLON OR POLYESTER, FLAME RETARDANT, UL 94V-0 RATED, GLASS FILLED.
CONTACTS: BRASS.
SHELLS: CARBON STEEL.
EYELETS: BRASS.
- 2 SHELLS: 2.54µm[.000100] MIN TIN OVER 1.27µm[.000050] MIN COPPER.
EYELETS: 5.08µm[.000200] MIN TIN OVER COPPER FLASH.
CONTACTS: SEE TABLE.
SCREWLOCK AND INSERT: CLEAR CHROMATE.
- 3 GOLD FLASH ON THE MATING SURFACES, 2.54µm[.000100] MIN TIN OR TIN-LEAD PLATE ON THE SOLDER END, 1.27µm[.000050] MIN NICKEL UNDERPLATE ON THE ENTIRE CONTACT.
- 4 0.76µm[.000030] MIN GOLD PLATE ON THE MATING SURFACES, 2.54µm[.000100] MIN TIN OR TIN-LEAD PLATE ON THE SOLDER END, 1.27µm[.000050] MIN NICKEL UNDERPLATE ON THE ENTIRE CONTACT
-OR-
GOLD FLASH OVER PALLADIUM-NICKEL PLATE, 0.76µm[.000030] MIN TOTAL ON THE MATING SURFACES, 2.54µm[.000100] MIN TIN OR TIN-LEAD PLATE ON THE SOLDER END, 1.27µm[.000050] MIN NICKEL UNDERPLATE ON THE ENTIRE CONTACT.
- 5 OBSOLETE PART NUMBER.
- 6 SUPERSEDED BY 747252-4.
- 7 SUPERSEDED BY 747252-6.
- 8 SUPERSEDED BY 747843-6.



DETAIL B



RECOMMENDED P.C. BOARD MOUNTING DIMENSIONS

NO SEE DETAIL B	NO	SEE DETAIL E	1-747252-2
		SEE DETAIL D	1-747252-1
YES YES	YES	-	1-747252-0
		-	747252-9
		SEE DETAIL E	747252-8
		SEE DETAIL D	747252-7
		-	747252-6
		-	747252-5
GROUNDING STRAPS	EYELETS	MOUNTING HARDWARE	747252-4
			747252-3
			747252-2
CONTACT FINISH	PART NUMBER	747252-1	
		747252-1	

THIS DRAWING IS A CONTROLLED DOCUMENT. DIMENSIONING AND TOLERANCING PER ASME Y14.5M-2009		DWG: W.G. LENKER 07-NOV-89 CHK: R. STONE 05-FEB-90	TE Connectivity	
DIMENSIONS: mm [INCHES]	TOLERANCES UNLESS OTHERWISE SPECIFIED:	APPROV: M.D. GALLOWAY 06-FEB-90	NAME:	PLUG ASSEMBLY, SIZE 4, 37 POSITION, RIGHT ANGLE, FRONT METAL SHELL, .318 SERIES, AMPLIMITE® HD-20
0 PLC ± -	1 PLC ± -	PRODUCT SPEC:	108-40025	APPLICATION SPEC:
2 PLC ± -	3 PLC ± 0.13[.005]	SIZE:	114-40010	WEIGHT:
4 PLC ± -	ANGLES ± 2° 0'	CAGE CODE:	00779	DRAWING NO:
MATERIAL:	FINISH:	RESTRICTED TO:	A1	SCALE: 4:1
CUSTOMER DRAWING		SHEET:	1 OF 1	REV: U