



Chipsmall Limited consists of a professional team with an average of over 10 year of expertise in the distribution of electronic components. Based in Hongkong, we have already established firm and mutual-benefit business relationships with customers from,Europe,America and south Asia,supplying obsolete and hard-to-find components to meet their specific needs.

With the principle of "Quality Parts,Customers Priority,Honest Operation,and Considerate Service",our business mainly focus on the distribution of electronic components. Line cards we deal with include Microchip,ALPS,ROHM,Xilinx,Pulse,ON,Everlight and Freescale. Main products comprise IC,Modules,Potentiometer,IC Socket,Relay,Connector.Our parts cover such applications as commercial,industrial, and automotives areas.

We are looking forward to setting up business relationship with you and hope to provide you with the best service and solution. Let us make a better world for our industry!



Contact us

Tel: +86-755-8981 8866 Fax: +86-755-8427 6832

Email & Skype: info@chipsmall.com Web: www.chipsmall.com

Address: A1208, Overseas Decoration Building, #122 Zhenhua RD., Futian, Shenzhen, China

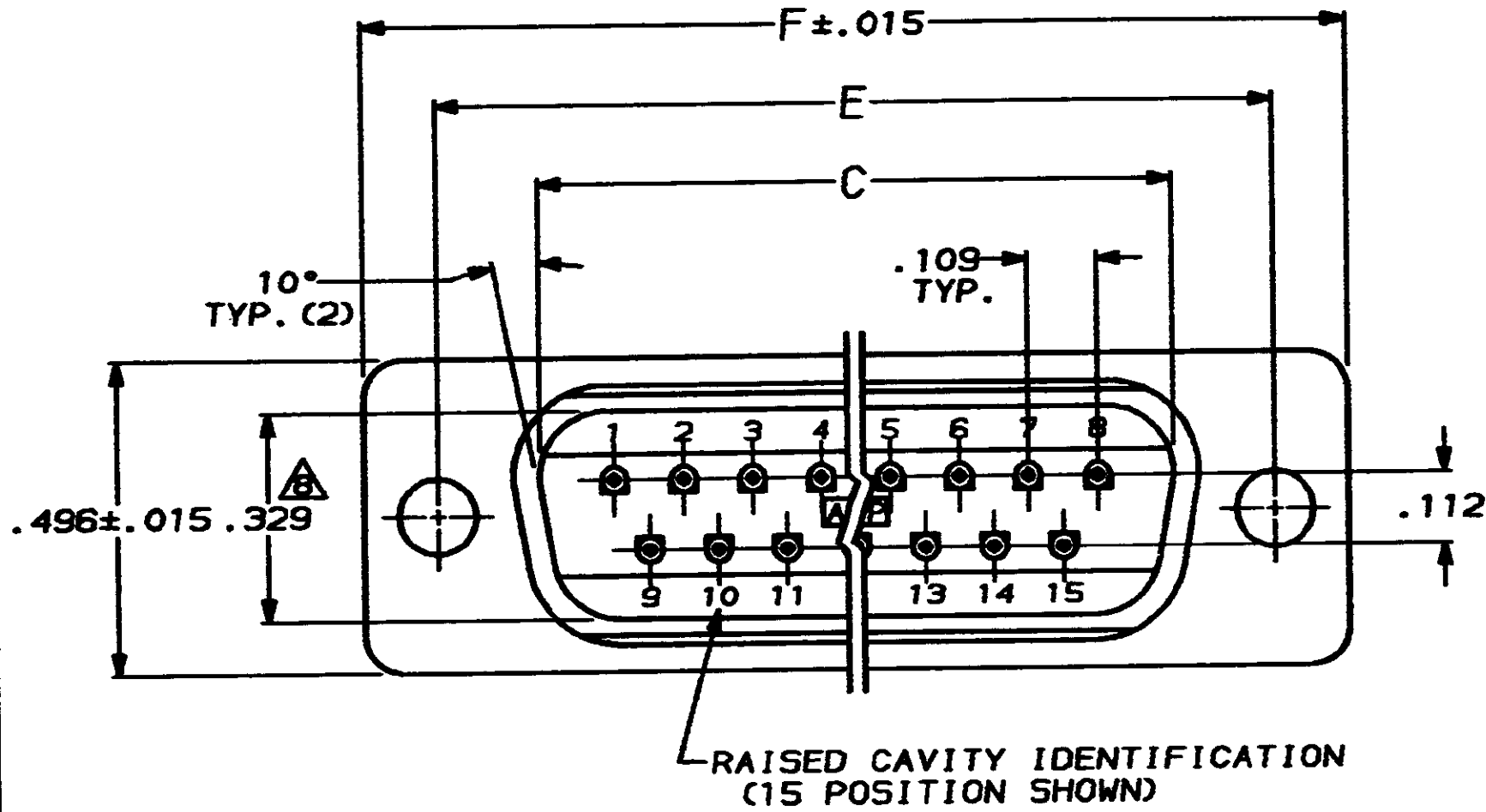


DRAWING MADE IN THIRD ANGLE PROJECTION

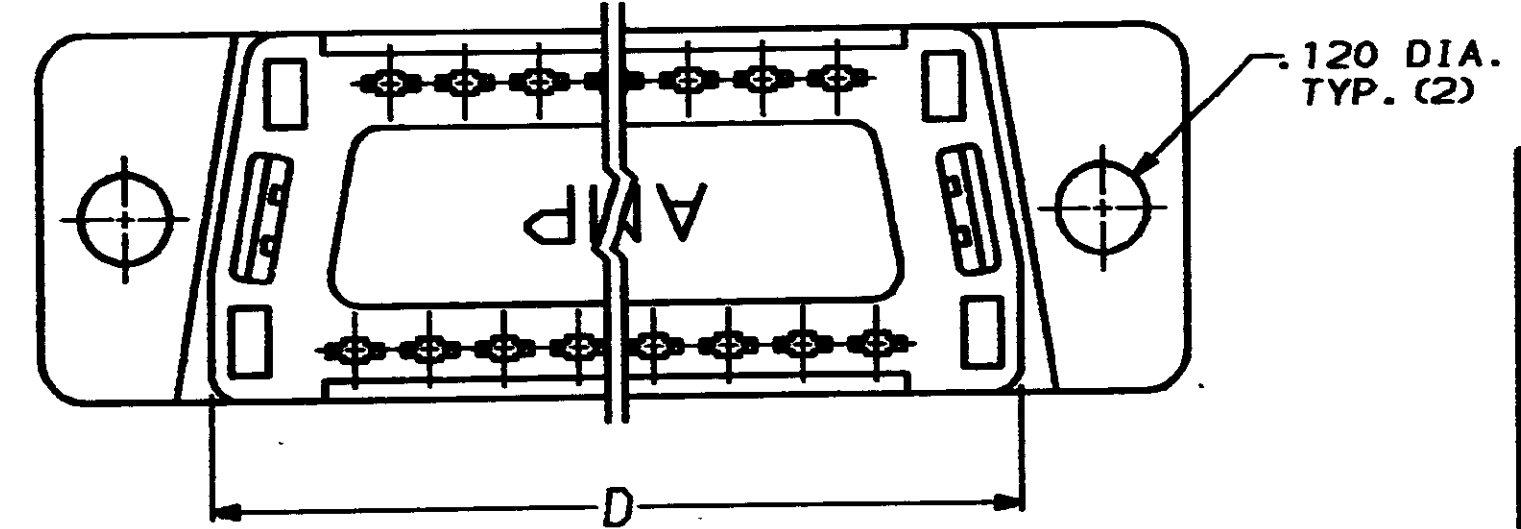
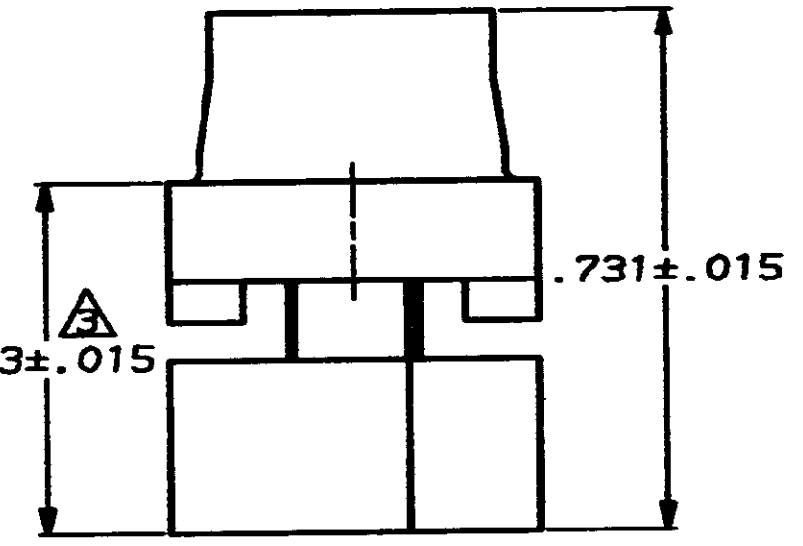
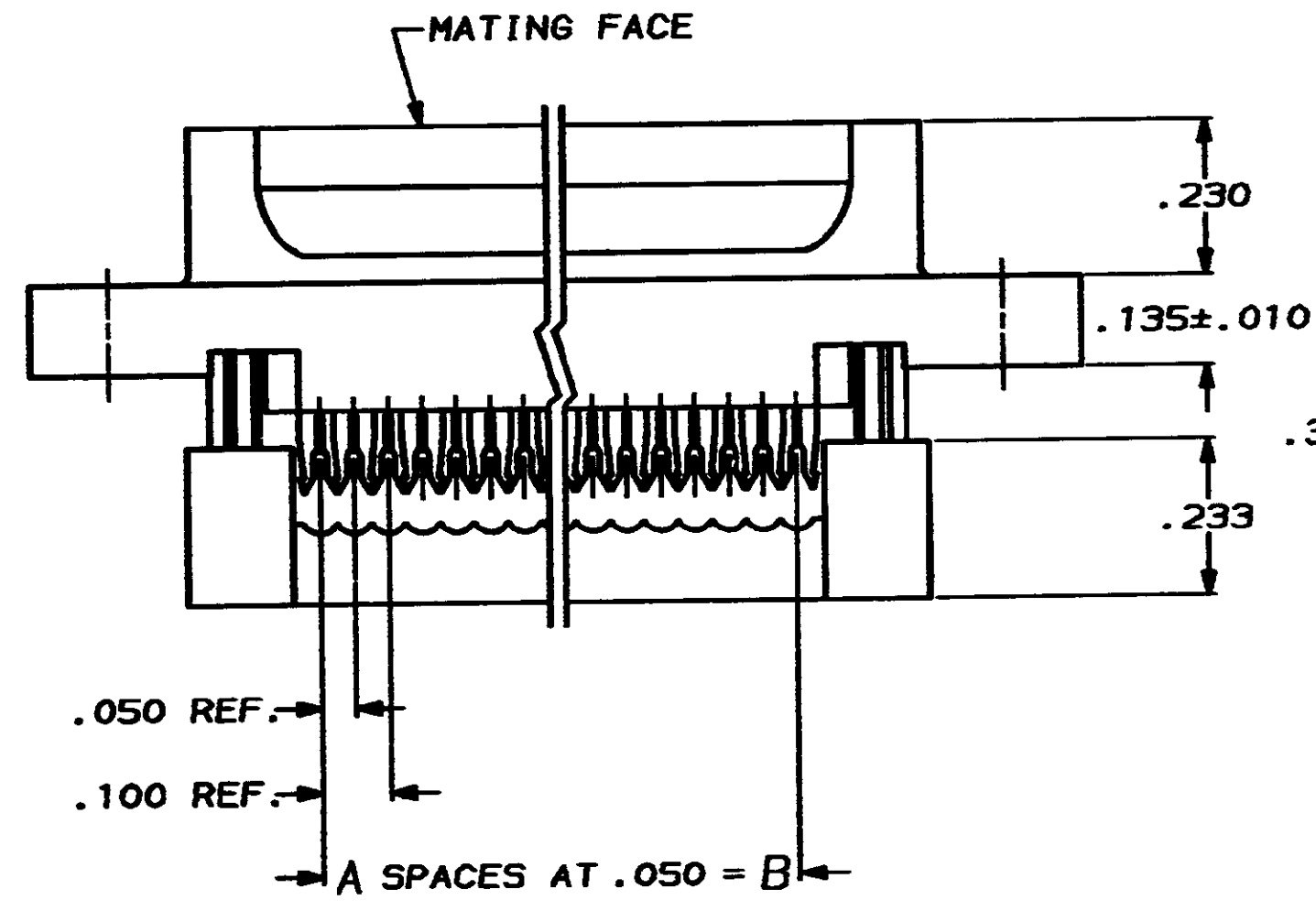
THIS DRAWING IS UNPUBLISHED. RELEASED FOR PUBLICATION
 © COPYRIGHT 19 BY AMP INCORPORATED, HARRISBURG, PA. ALL INTERNATIONAL RIGHTS RESERVED. AMP PRODUCTS MAY BE COVERED BY U.S. AND FOREIGN PATENTS AND/OR PATENTS PENDING.

| MOD | LOC | DIST |
|-----|-----|------|
| 20 | BD | 39 |

| REVISIONS | | | | | | |
|-----------|---|------|-----|--------------------|----------|----------|
| P | F | ZONE | LTR | DESCRIPTION | DATE | APPROVED |
| | | | 0 | RELEASED | | |
| | | | 0 | REVISED ECN-0048 | 4-10-84 | JG |
| | | | A | REV PER ECN BD2622 | 2-18-85 | JS |
| | | | B | REV PER ECN BD4356 | 08/28/85 | |



- CONNECTORS COMPLY WITH AMP SPEC. 108-40,012 AND MATE WITH ANY SAME NUMBER POSITION RECEPTACLE CONNECTOR IN AMPLIMITE SERIES.
 - CONNECTOR DESIGNED FOR 28 AND 26 AWG STRANDED AND SOLID CONDUCTOR RIBBON CABLE ON .050¢.
- △ DIMENSION APPLIES TO TERMINATED CONNECTOR.
 - △ MOLDED PARTS: FLAME RETARDANT 94V-0 RATED THERMOPLASTIC, COLOR: BLACK.
 - △ PHOS. BRONZE PER QQ-B-750.
 - △ GOLD PLATING PER MIL-G-45204, BRIGHT TIN PLATING PER MIL-T-10727 (NOT TIN LEAD), NICKEL PLATING PER QQ-N-290.
 - △ .000030 GOLD ON MATING END, .000100-.000200 BRIGHT TIN OR BRIGHT TIN LEAD ON TERMINATION END, ALL OVER .000050 NICKEL ON ENTIRE CONTACT.
 - △ DIMENSION APPLIES TO BASE OF SHROUD.



| | | | | | | | |
|-------|-------|-------|-------|-------|----|-------------|-------------|
| 1.216 | .984 | .759 | .666 | .400 | 8 | 9 | 747321-4 |
| 1.541 | 1.312 | 1.087 | .994 | .700 | 14 | 15 | 747321-3 |
| 2.090 | 1.852 | 1.623 | 1.534 | 1.200 | 24 | 25 | 747321-2 |
| 2.732 | 2.500 | 2.275 | 2.183 | 1.800 | 36 | 37 | 747321-1 |
| F | E | D | C | B | A | NO. OF POS. | PART NUMBER |

| | | | | |
|--|-------------|--------------------|--|--------------|
| UNLESS OTHERWISE SPECIFIED DIMENSIONS ARE IN INCHES. TOLERANCES ON: DECIMALS ± .005 ANGLES ± 2° | CONTRACT NO | | AMP AMP INCORPORATED Harrisburg, Pa. | |
| | DR | J.GERACE 9-16-83 | | |
| | CHK | J.GERACE 9-16-83 | NAME | |
| | APPD | D.HOFFMAN 10-3-83 | PLUG ASSEMBLY, LOW PROFILE HDF, W/ PREASSEMBLED COVER | |
| MATERIAL | APPD | T.LYZINSKI 10-4-83 | DRAWING NO | |
| MOLDED PARTS: △ | OSGN APPD | | SIZE | FSCN NO |
| CONTACTS: △ | OTHER APPD | | C | 00779 |
| FINISH △ | | | DRAWING NO | |
| CONTACTS: △ | | | 747321 | |
| | | | SCALE | SHEET 1 OF 1 |

CUSTOMER DRAWING