



Chipsmall Limited consists of a professional team with an average of over 10 year of expertise in the distribution of electronic components. Based in Hongkong, we have already established firm and mutual-benefit business relationships with customers from,Europe,America and south Asia,supplying obsolete and hard-to-find components to meet their specific needs.

With the principle of “Quality Parts,Customers Priority,Honest Operation,and Considerate Service”,our business mainly focus on the distribution of electronic components. Line cards we deal with include Microchip,ALPS,ROHM,Xilinx,Pulse,ON,Everlight and Freescale. Main products comprise IC,Modules,Potentiometer,IC Socket,Relay,Connector.Our parts cover such applications as commercial,industrial, and automotives areas.

We are looking forward to setting up business relationship with you and hope to provide you with the best service and solution. Let us make a better world for our industry!



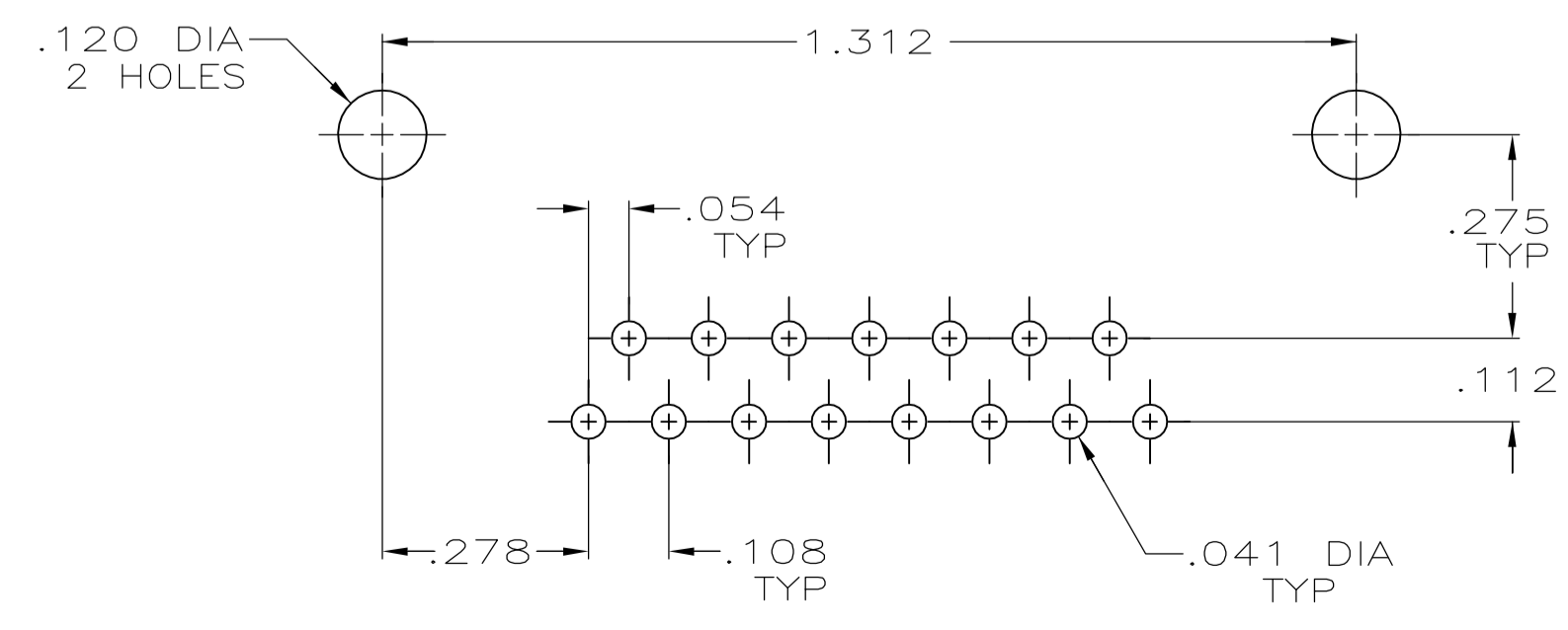
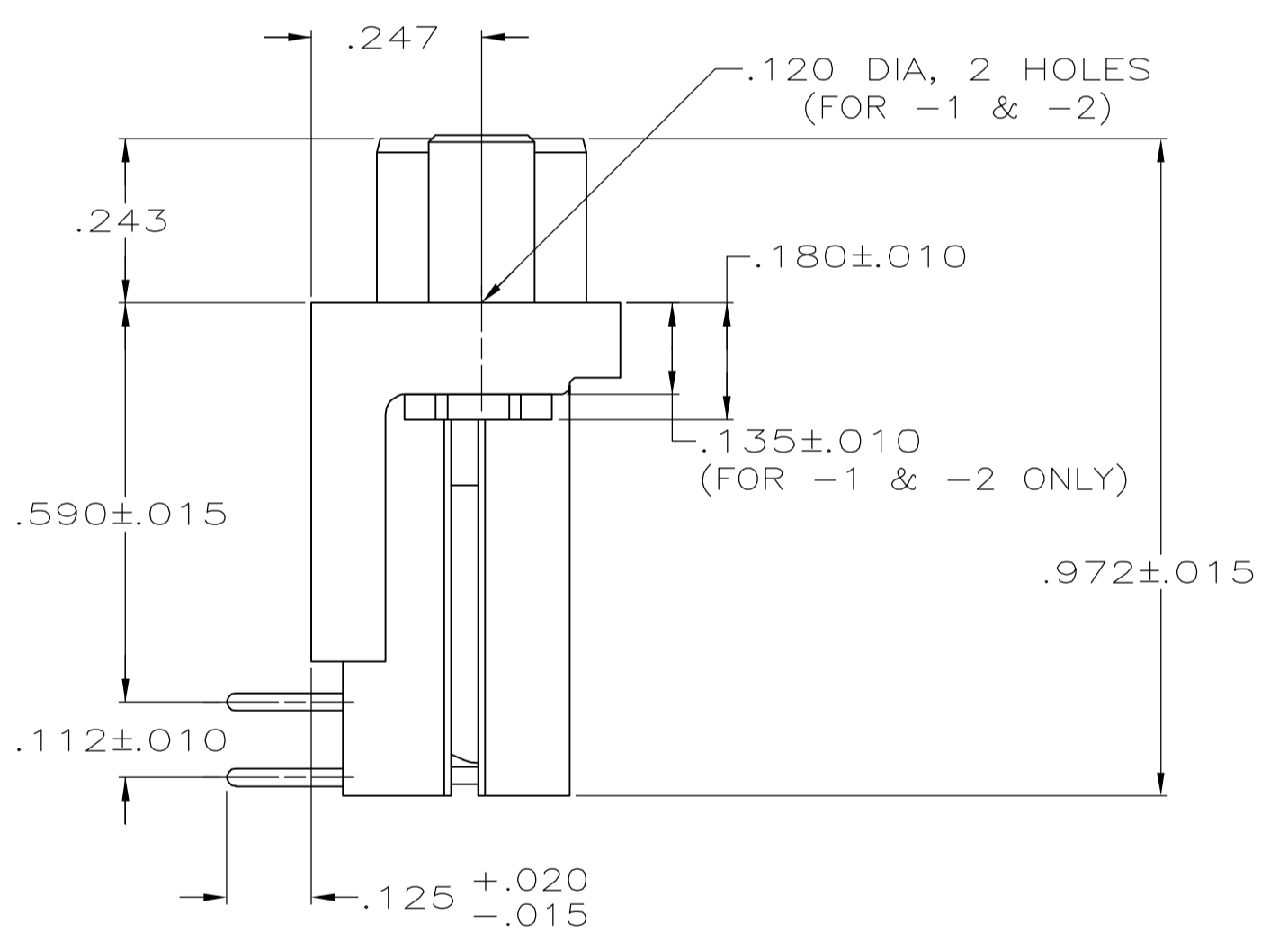
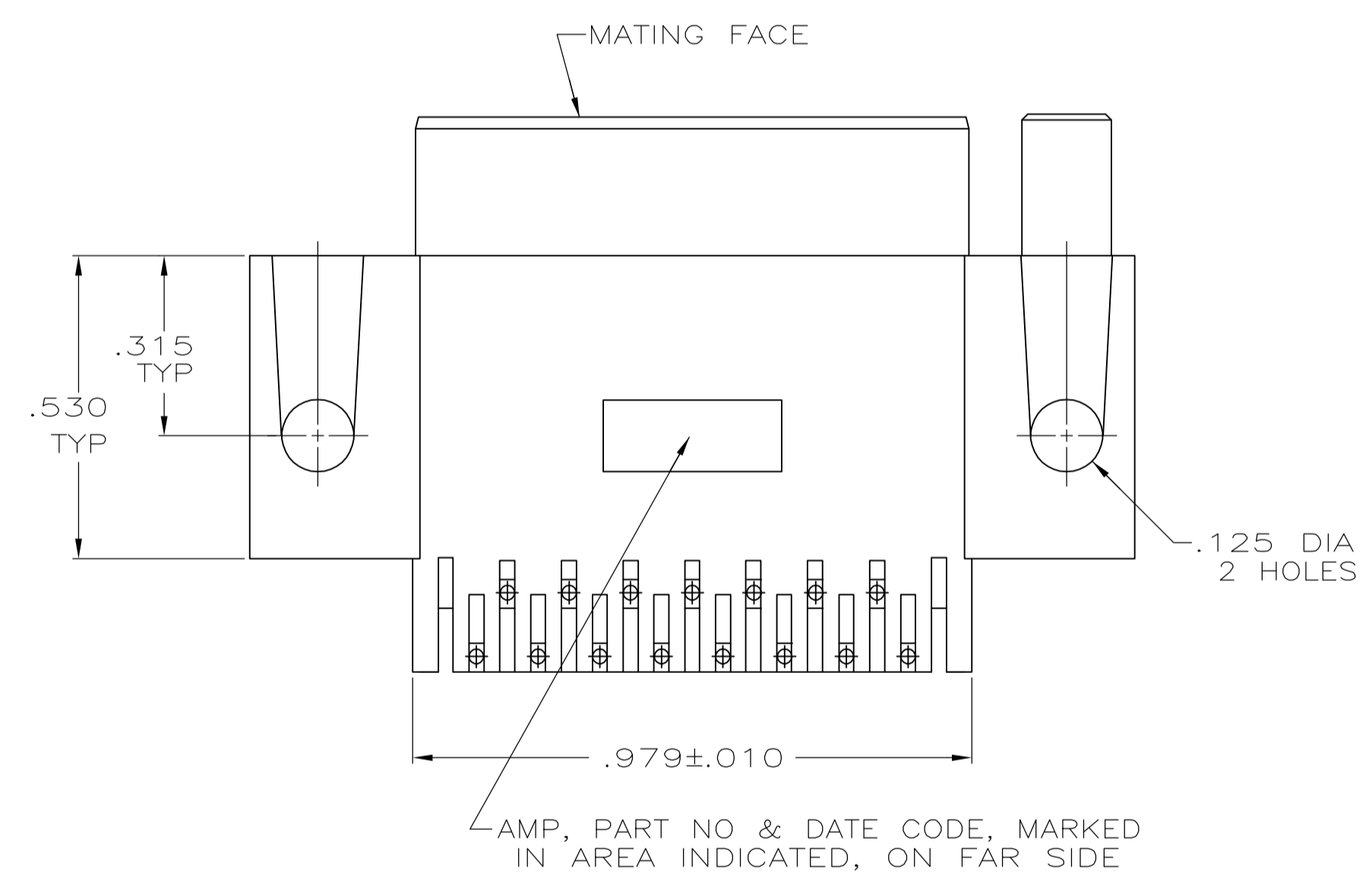
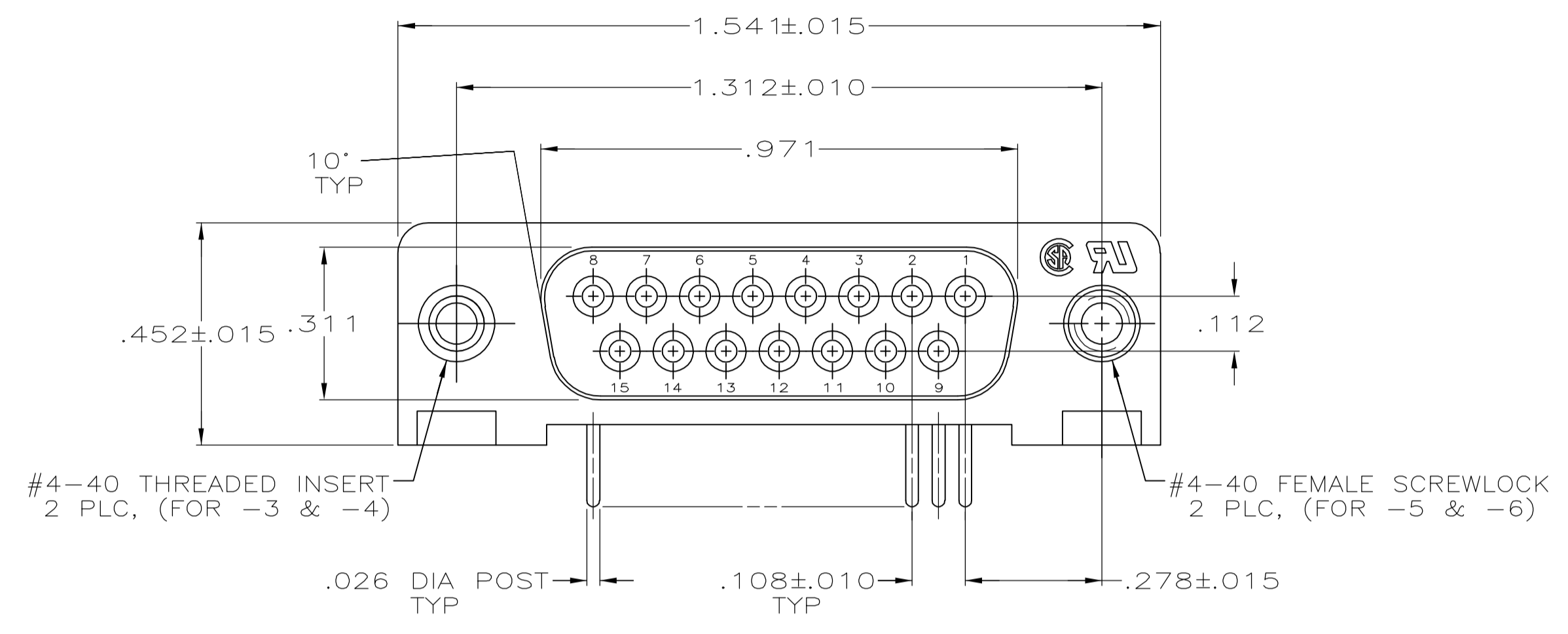
Contact us

Tel: +86-755-8981 8866 Fax: +86-755-8427 6832

Email & Skype: info@chipsmall.com Web: www.chipsmall.com

Address: A1208, Overseas Decoration Building, #122 Zhenhua RD., Futian, Shenzhen, China





P.C. BOARD MOUNTING DIMENSIONS Δ

- Δ 1 FLAME RETARDANT, 94V-0 RATED, GLASS FILLED, NYLON OR POLYESTER, COLOR: BLACK.
- Δ 2 PHOS. BRONZE PER QQ-B-750.
- Δ 3 REFER TO APPLICATION SPEC FOR RECOMMENDED P.C. BOARD MOUNTING DIMENSIONS FOR AUTOMATIC INSERTION.
- Δ 4 ZINC.
- Δ 5 GOLD PLATING PER MIL-G-45204, TIN PLATING PER MIL-T-10727, NICKEL PLATING PER QQ-N-290.
- Δ 6 CLEAR CHROMATE.
- Δ 7 PLATED WITH GOLD FLASH FOR LENGTH OF .055 MIN FROM MATING END, WITH POINT OF MEASUREMENT .035 FROM MATING END OF CONTACT, .000100-.000200 TIN OR TIN-LEAD ON SOLDER END, ALL OVER .000050 NICKEL ON ENTIRE CONTACT.
- Δ 8 PLATED WITH .000030 GOLD FOR LENGTH OF .055 MIN FROM MATING END, WITH POINT OF MEASUREMENT .035 FROM MATING END OF CONTACT, .000100-.000200 TIN OR TIN-LEAD ON SOLDER END, ALL OVER .000050 NICKEL ON ENTIRE CONTACT.

SUPSD BY 748948-1	WITH SCREWLOCKS	Δ 8	747460 -6
OBSOLETE	WITH SCREWLOCKS	Δ 7	747460 -5
OBSOLETE	WITH INSERTS	Δ 6	747460 -4
OBSOLETE	WITH INSERTS	Δ 7	747460 -3
OBSOLETE	WITH .120 DIA HOLE	Δ 8	747460 -2
	WITH .120 DIA HOLE	Δ 7	747460 -1
REMARKS		FINISH	PART NUMBER

THIS DRAWING IS A CONTROLLED DOCUMENT.		DWN: C. RICHARD 7-29-87	Tyco Electronics Corporation											
DIMENSIONS: INCHES		DWG: S. WELDON 7-30-87	Harrisburg, PA 17105-3608											
TOLERANCES UNLESS OTHERWISE SPECIFIED:		APVD: -	NAME: RECEPTACLE ASSY, SIZE 2, 15 POSN, RIGHT ANGLE, .590 SERIES, .026 DIA POSTS, AMPLIMITE HD-20											
<table border="1"> <tr><td>0 PLC</td><td>± -</td></tr> <tr><td>1 PLC</td><td>± -</td></tr> <tr><td>2 PLC</td><td>± -</td></tr> <tr><td>3 PLC</td><td>± .005</td></tr> <tr><td>4 PLC</td><td>± -</td></tr> </table>		0 PLC	± -	1 PLC	± -	2 PLC	± -	3 PLC	± .005	4 PLC	± -	PRODUCT SPEC: 108-40005	SIZE: A1	
0 PLC	± -													
1 PLC	± -													
2 PLC	± -													
3 PLC	± .005													
4 PLC	± -													
MATERIAL MOLDED PARTS: Δ		APPLICATION SPEC: 114-40015	RESTRICTED TO: -											
CONTACTS: Δ		FINISH: Δ	SCALE: 4:1											
HARDWARE: Δ		CONTACTS: SEE TABLE	SHEET 1 OF 1											
CUSTOMER DRAWING		WEIGHT: -	REV H											