



Chipsmall Limited consists of a professional team with an average of over 10 year of expertise in the distribution of electronic components. Based in Hongkong, we have already established firm and mutual-benefit business relationships with customers from,Europe,America and south Asia,supplying obsolete and hard-to-find components to meet their specific needs.

With the principle of “Quality Parts,Customers Priority,Honest Operation,and Considerate Service”,our business mainly focus on the distribution of electronic components. Line cards we deal with include Microchip,ALPS,ROHM,Xilinx,Pulse,ON,Everlight and Freescale. Main products comprise IC,Modules,Potentiometer,IC Socket,Relay,Connector.Our parts cover such applications as commercial,industrial, and automotives areas.

We are looking forward to setting up business relationship with you and hope to provide you with the best service and solution. Let us make a better world for our industry!



Contact us

Tel: +86-755-8981 8866 Fax: +86-755-8427 6832

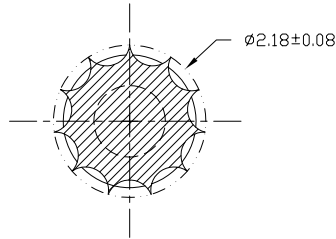
Email & Skype: info@chipsmall.com Web: www.chipsmall.com

Address: A1208, Overseas Decoration Building, #122 Zhenhua RD., Futian, Shenzhen, China

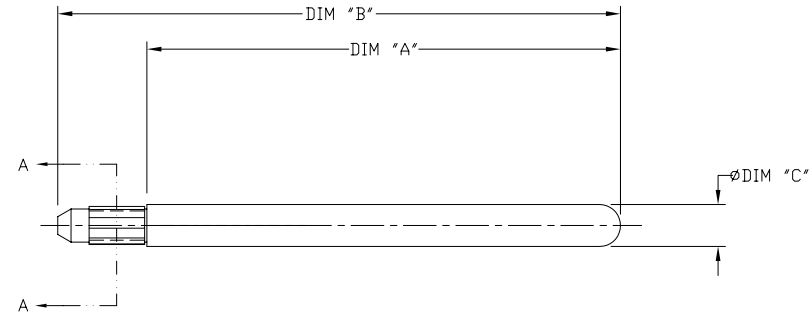


PRODUCT NUMBER	DIM "A"	DIM "B"	DIM "C"	LF OPTION
74749-101	27.10	32.20	2.40	NOTE 4
74749-102 **	10.00	15.10		
74749-202 **	10.00	15.10	3.43	

** CUSTOMER SPECIAL - THIS PART WILL NOT WORK IN ALL APPLICATIONS.

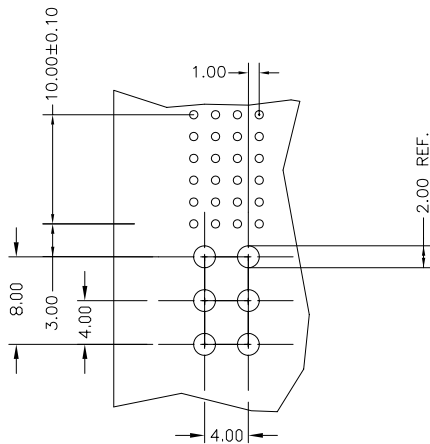


SECTION A - A
SCALE 4:1



NOTES:

- ① MATERIAL: STAINLESS STEEL, TYPE 303.
FINISH: PASSIVATED.
2. THIS GUIDE PIN IS INTENDED TO BE INSERTED INTO A 2.00±.08 NONPLATED THROUGH HOLE.
3. THIS KEYING PIN IS TO BE USED WITH RECEPTACLE P/N 88916.
- ④ ADD 'LF' SUFFIX AT THE END OF PART NUMBER FOR LEAD FREE OPTION.
5. THIS PRODUCT MEETS EUROPEAN UNION DIRECTIVES AND OTHER COUNTRY REGULATION AS DESCRIBED IN GS-22-008.



RECOMMENDED HOLE PATTERN
COMPONENT SIDE

mat'l. code SEE NOTE 1		surface ISO 1302 ✓	tolerance ISO 406 ISO 1101	projection MM	product family METRAL (tm)
ltr	ecn no	dr	date	tolerances unless otherwise specified	title
A	V80809	MDF	4/24/98	angles	PRESS-FIT KEYING PLUG PIN
B	V81424	GCR	8/18/98	linear	
C	V20723	CGD	4/15/02	σ±2'	
D	V21645	TAB	10/15/02	dr	M. FETROW 4/24/98
E	V04-0068	HTB	2/06/04	enfr	C. PENDLETON 4/24/98
F	M06-0286	MNR	7/27/06	chr	C. PENDLETON 4/24/98
G	M06-0400	MHT	10/10/06	appd	C. PENDLETON 4/24/98
sheet index	revision	G			scale 3:1
sheet	sheet	1			FCJ
					dwg no 74749
					sheet 1 of 1 size A3
					type Product Customer Drawing