



Chipsmall Limited consists of a professional team with an average of over 10 year of expertise in the distribution of electronic components. Based in Hongkong, we have already established firm and mutual-benefit business relationships with customers from,Europe,America and south Asia,supplying obsolete and hard-to-find components to meet their specific needs.

With the principle of “Quality Parts,Customers Priority,Honest Operation,and Considerate Service”,our business mainly focus on the distribution of electronic components. Line cards we deal with include Microchip,ALPS,ROHM,Xilinx,Pulse,ON,Everlight and Freescale. Main products comprise IC,Modules,Potentiometer,IC Socket,Relay,Connector.Our parts cover such applications as commercial,industrial, and automotives areas.

We are looking forward to setting up business relationship with you and hope to provide you with the best service and solution. Let us make a better world for our industry!



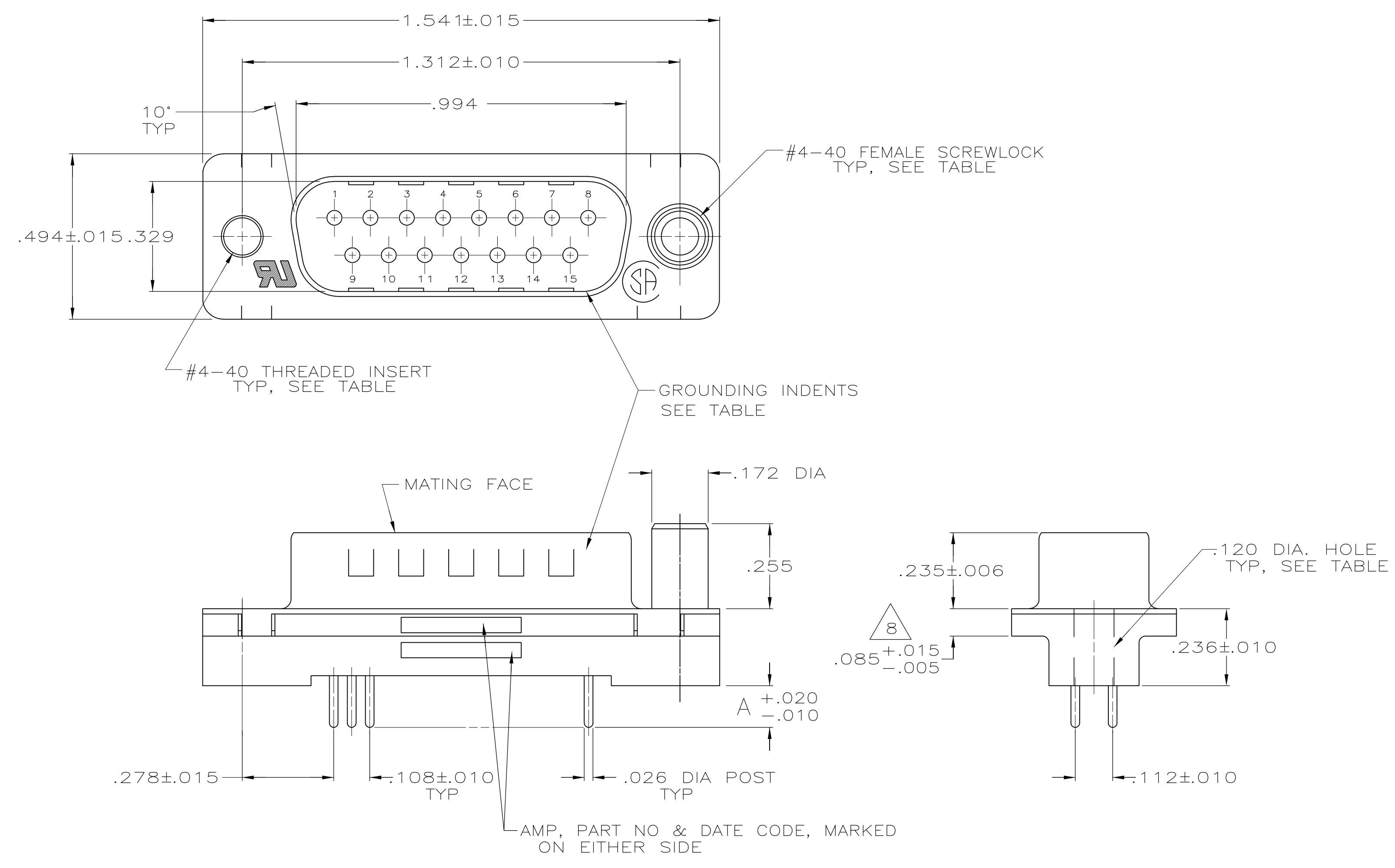
## Contact us

Tel: +86-755-8981 8866 Fax: +86-755-8427 6832

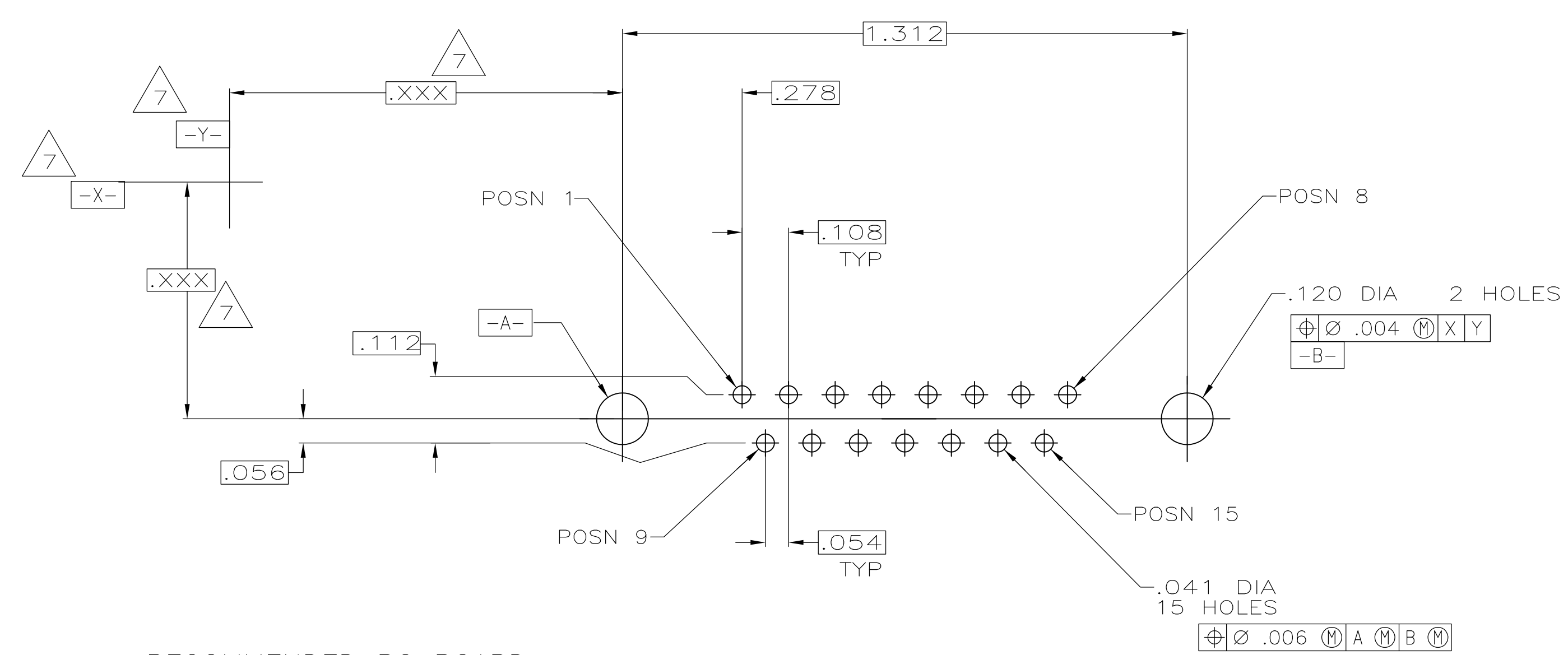
Email & Skype: info@chipsmall.com Web: www.chipsmall.com

Address: A1208, Overseas Decoration Building, #122 Zhenhua RD., Futian, Shenzhen, China





1. NOTE DELETED.
2. HOUSING: FLAME RETARDANT 94V-0 RATED THERMOPLASTIC, BLACK  
SHELLS: CARBON STEEL  
CONTACTS: BRASS  
INSERTS: BRASS  
SCREWLOCKS: ZINC
3. SHELLS: .000200 MIN TIN OVER .000100 MIN COPPER.  
INSERTS: UNPLATED.  
SCREWLOCKS: UNPLATED.  
CONTACTS: SEE TABLE.
4. GOLD PLATED FOR A LENGTH OF .150 MIN FROM MATING END, GOLD FLASH IN MATED AREA, .000100 MIN TIN OR TIN-LEAD FOR A LENGTH OF DIMENSION A FROM OPPOSITE END, ALL OVER .000050 MIN NICKEL.
5. GOLD PLATED FOR A LENGTH OF .150 FROM MATING END, .000030 MIN GOLD IN MATED AREA, .000100 MIN TIN OR TIN-LEAD FOR A LENGTH OF DIMENSION A FROM OPPOSITE END, ALL OVER .000050 MIN NICKEL.  
-OR-  
GOLD FLASH OVER PALLADIUM NICKEL PLATED FOR LENGTH OF .150 FROM MATING END, .000030 MIN PALLADIUM NICKEL IN MATED AREA, .000100 MIN TIN OR TIN-LEAD FOR A LENGTH OF DIMENSION A FROM OPPOSITE END, ALL OVER .000050 MIN NICKEL.
6. NOTE DELETED.
7. DATUMS AND BASIC DIMENSIONS ESTABLISHED BY CUSTOMERS.
8. .110 MAX IN SHELL TAB CLINCH AREAS.



RECOMMENDED PC BOARD MOUNTING DIMENSIONS

OBSOLETE	NO	W/THREADED INSERTS	5	.125	1-747872-9
OBSOLETE	YES	W/FEMALE SCREWLOCKS	5	.250	1-747872-8
OBSOLETE	YES	W/FEMALE SCREWLOCKS	4	.250	1-747872-7
	YES	W/FEMALE SCREWLOCKS	5	.170	1-747872-6
SUPERSEDED BY 1-747872-6	YES	W/FEMALE SCREWLOCKS	4	.170	1-747872-5
SUPERSEDED BY 1-747872-6	YES	W/FEMALE SCREWLOCKS	5	.125	1-747872-4
OBSOLETE	YES	W/FEMALE SCREWLOCKS	4	.125	1-747872-3
OBSOLETE	YES	W/THREADED INSERTS	5	.250	1-747872-2
OBSOLETE	YES	W/THREADED INSERTS	4	.250	1-747872-1
OBSOLETE	YES	W/THREADED INSERTS	5	.170	1-747872-0
OBSOLETE	YES	W/THREADED INSERTS	4	.170	747872-9
	YES	W/THREADED INSERTS	5	.125	747872-8
OBSOLETE	YES	W/THREADED INSERTS	4	.125	747872-7
OBSOLETE	YES	W/.120 DIA. HOLE	5	.250	747872-6
OBSOLETE	YES	W/.120 DIA. HOLE	4	.250	747872-5
	YES	W/.120 DIA. HOLE	5	.170	747872-4
OBSOLETE	YES	W/.120 DIA. HOLE	4	.170	747872-3
SUPERSEDED BY 747872-4	YES	W/.120 DIA. HOLE	5	.125	747872-2
OBSOLETE	YES	W/.120 DIA. HOLE	4	.125	747872-1

GROUNDING INDENTS	REMARKS	CONTACT FINISH	DIM A	PART NUMBER

THIS DRAWING IS A CONTROLLED DOCUMENT.		DIN S. WELDON 12-25-85	TE Connectivity	
		CIRK C. RICHARD 12-25-85		
DIMENSIONS: INCHES		APVD R. BRANDT 12-2-85		NAME
TOLERANCES UNLESS OTHERWISE SPECIFIED:		PRODUCT SPEC		PLUG ASSEMBLY, SIZE 2, 15 POS., VERTICAL, .026 DIA. POSTS, FRONT SHELL, AMPLIMITE™HDP
0 PLC ± -	1 PLC ± -	APPLICATION SPEC		108-40025
2 PLC ± -	3 PLC ± -.005	DRAWING NO		114-40023
4 PLC ± -	ANGLES ± °	SIZE		A1
MATERIAL		WEIGHT		00779
FINISH		CUSTOMER DRAWING		747872
		SCALE		NTS
		SHEET		1 of 1
		REV		L1