



Chipsmall Limited consists of a professional team with an average of over 10 year of expertise in the distribution of electronic components. Based in Hongkong, we have already established firm and mutual-benefit business relationships with customers from,Europe,America and south Asia,supplying obsolete and hard-to-find components to meet their specific needs.

With the principle of “Quality Parts,Customers Priority,Honest Operation,and Considerate Service”,our business mainly focus on the distribution of electronic components. Line cards we deal with include Microchip,ALPS,ROHM,Xilinx,Pulse,ON,Everlight and Freescale. Main products comprise IC,Modules,Potentiometer,IC Socket,Relay,Connector.Our parts cover such applications as commercial,industrial, and automotives areas.

We are looking forward to setting up business relationship with you and hope to provide you with the best service and solution. Let us make a better world for our industry!



Contact us

Tel: +86-755-8981 8866 Fax: +86-755-8427 6832

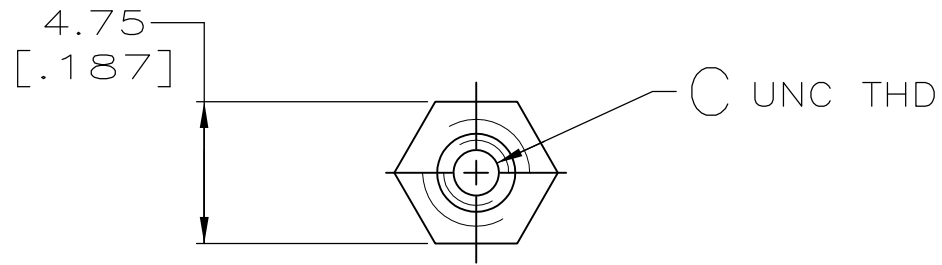
Email & Skype: info@chipsmall.com Web: www.chipsmall.com

Address: A1208, Overseas Decoration Building, #122 Zhenhua RD., Futian, Shenzhen, China

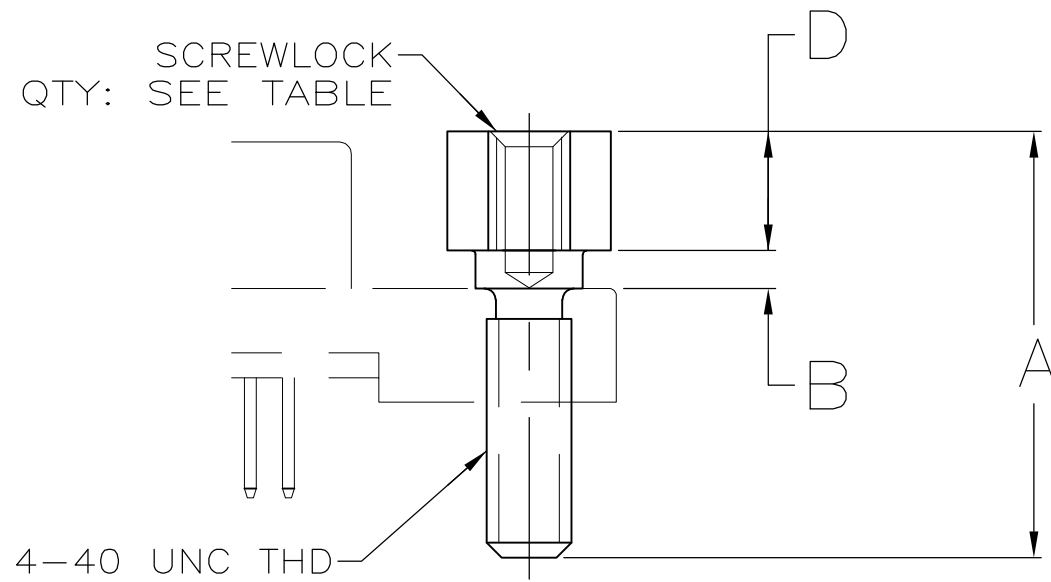


THIS DRAWING IS UNPUBLISHED. RELEASED FOR PUBLICATION
 © COPYRIGHT - By - ALL RIGHTS RESERVED.

LOC	DIST	REVISIONS			
P	LTR	DESCRIPTION	DATE	DWN	APVD
GP	00	M3	REVISED PER ECO-11-004835	11MAR11	RK HMR



1 OBSOLETE PARTS: OBSOLETE CIS STREAMLINING PER D.RENAUD/D.SINISI



1	OBSOLETE	QTY	D	C	B	A	PART NUMBER
	OBSOLETE	1000	4.19 [.165]	2-56	1.07 [.042]	14.27 [.562]	749087-8
	OBSOLETE	1000	3.99 [.157]	2-56	1.27 [.050]	14.27 [.562]	749087-7
	OBSOLETE	2	3.71±0.05 [.146±.002]	2-56	1.27 [.050]	13.92 [.548]	749087-6
	OBSOLETE	1000	3.99 [.157]	4-40	1.27 [.050]	18.29 [.720]	749087-5
		2	4.19 [.165]	2-56	1.07 [.042]	14.27 [.562]	749087-4
		1000	3.99 [.157]	2-56	1.27 [.050]	9.65 [.380]	749087-3
		2	3.99 [.157]	2-56	1.27 [.050]	9.65 [.380]	749087-2
		2	3.99 [.157]	2-56	1.27 [.050]	14.27 [.562]	749087-1
	SCREWLOCKS PER BAG		D	C	B	A	

THIS DRAWING IS A CONTROLLED DOCUMENT.

DIMENSIONS: INCHES	TOLERANCES UNLESS OTHERWISE SPECIFIED:
	0 PLC ± -
	1 PLC ± -
	2 PLC ± 0.13 [.005]
	3 PLC ± -
	4 PLC ± -
MATERIAL	ANGLES ± -
STAINLESS STEEL	FINISH -

DWN	11/24/93
D.GELTZ	
CHK	02/25/94
R.STONE	
APVD	-
PRODUCT SPEC	-
APPLICATION SPEC	-
WEIGHT	-
CUSTOMER DRAWING	



SCREWLOCK KIT, FEMALE, AMPLIMITE, .050 SERIES

NAME	SIZE	CAGE CODE	DRAWING NO	RESTRICTED TO
	A3	00779	C-749087	-
SCALE	SHEET	REV		
4:1	1 OF 1	M3		