



Chipsmall Limited consists of a professional team with an average of over 10 year of expertise in the distribution of electronic components. Based in Hongkong, we have already established firm and mutual-benefit business relationships with customers from,Europe,America and south Asia,supplying obsolete and hard-to-find components to meet their specific needs.

With the principle of “Quality Parts,Customers Priority,Honest Operation,and Considerate Service”,our business mainly focus on the distribution of electronic components. Line cards we deal with include Microchip,ALPS,ROHM,Xilinx,Pulse,ON,Everlight and Freescale. Main products comprise IC,Modules,Potentiometer,IC Socket,Relay,Connector.Our parts cover such applications as commercial,industrial, and automotives areas.

We are looking forward to setting up business relationship with you and hope to provide you with the best service and solution. Let us make a better world for our industry!



Contact us

Tel: +86-755-8981 8866 Fax: +86-755-8427 6832

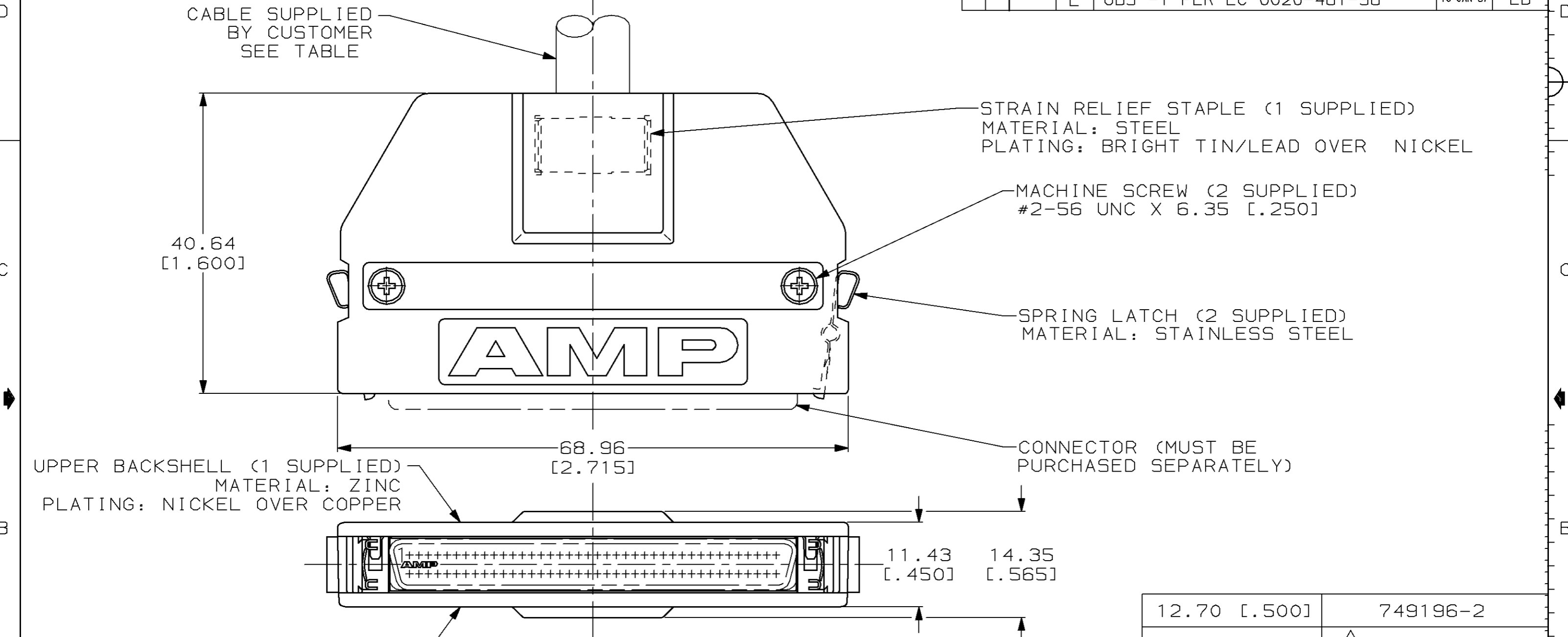
Email & Skype: info@chipsmall.com Web: www.chipsmall.com

Address: A1208, Overseas Decoration Building, #122 Zhenhua RD., Futian, Shenzhen, China



THIS DRAWING IS UNPUBLISHED. RELEASED FOR PUBLICATION, 19 .
 © COPYRIGHT 19 BY AMP INCORPORATED. ALL INTERNATIONAL RIGHTS RESERVED.

LOC	DIST	P	F	REVISIONS			
ZONE	LTR	DESCRIPTION	DATE	APPD			
BD	95						
			D	ADDED -2 PER NPR 3466	05/02/91	-	
			E	OBS -1 PER EC 0020-481-96	10 JAN 97	LB	



DO NOT SCALE PRINT. UNLESS SPECIFIED DIMENSIONS IN mm [INCHES]		DR 12-20-88 M.A. McCAFFREY	AMP INCORPORATED Harrisburg, Pa. 17105	
TOLERANCES ON:		CHK 12-20-88 M.E. SHIRK	NAME	
2 PLC DEC ± -		APPD 12-20-88 J. BROSCARD	INDIVIDUAL KIT, UNASSEMBLED, 80 POSITION, STRAIGHT EXIT, UNKEYED, AMPLIMITE .050 Series	
3 PLC DEC ± 0.38 [.015]		APPD 12-20-88 C.E. REYNOLDS	SIZE	FSCM NO
ANGLES ± -		PRODUCT SPEC	B	00779
MATERIAL	-	APPLICATION SPEC	SCALE	DRAWING NO
FINISH	-	WEIGHT	2:1	749196
			SHEET	1 OF 1

1 OBSOLETE PART NUMBER.