



Chipsmall Limited consists of a professional team with an average of over 10 year of expertise in the distribution of electronic components. Based in Hongkong, we have already established firm and mutual-benefit business relationships with customers from,Europe,America and south Asia,supplying obsolete and hard-to-find components to meet their specific needs.

With the principle of “Quality Parts,Customers Priority,Honest Operation,and Considerate Service”,our business mainly focus on the distribution of electronic components. Line cards we deal with include Microchip,ALPS,ROHM,Xilinx,Pulse,ON,Everlight and Freescale. Main products comprise IC,Modules,Potentiometer,IC Socket,Relay,Connector.Our parts cover such applications as commercial,industrial, and automotives areas.

We are looking forward to setting up business relationship with you and hope to provide you with the best service and solution. Let us make a better world for our industry!



Contact us

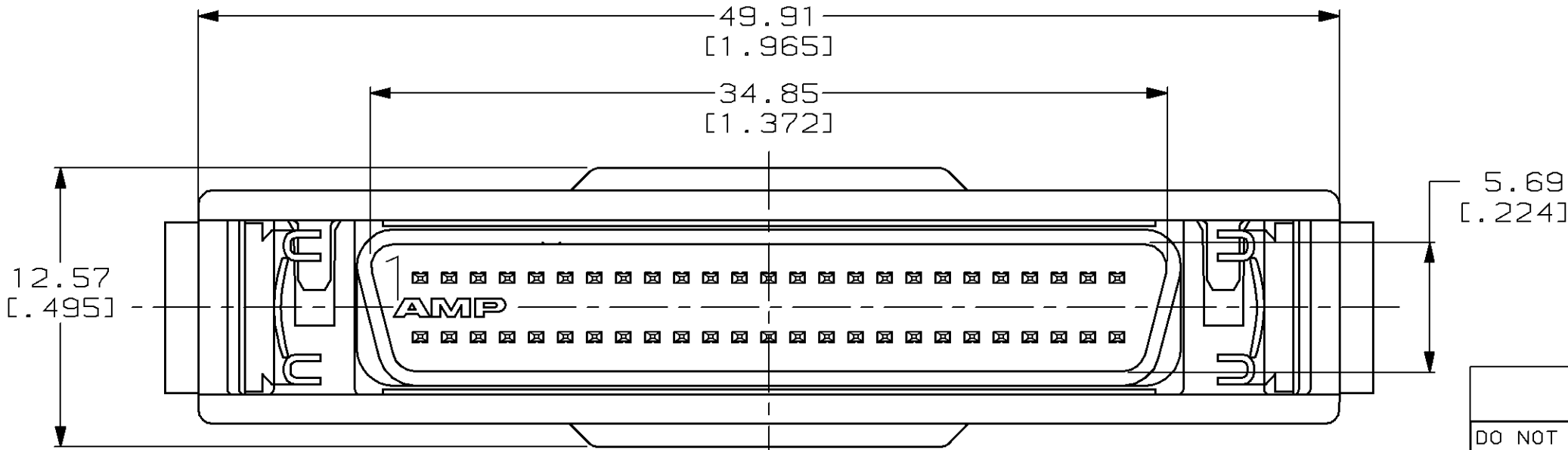
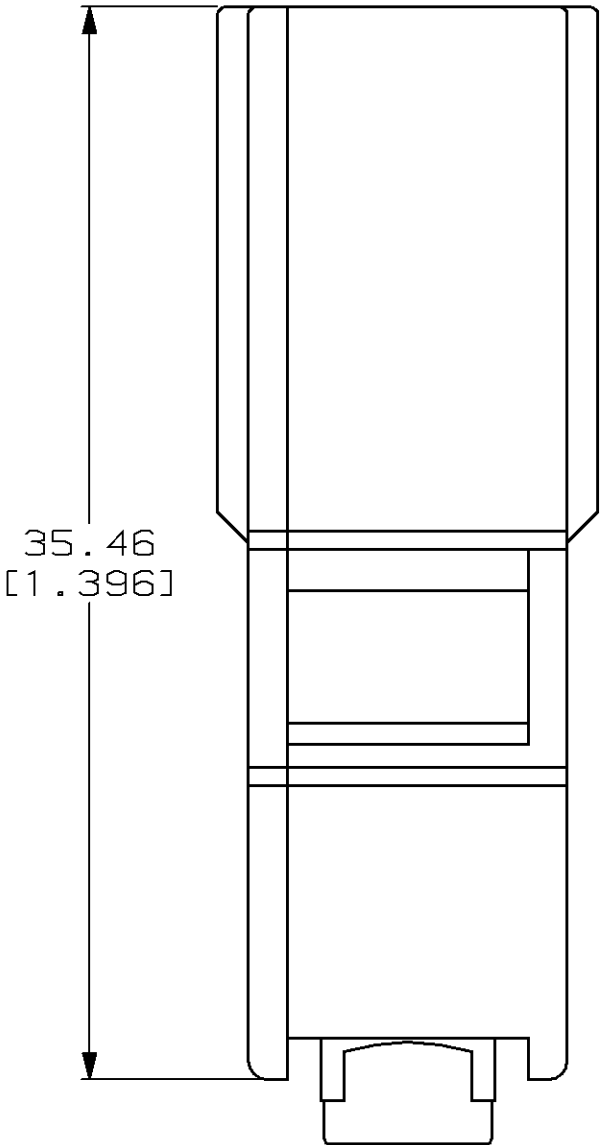
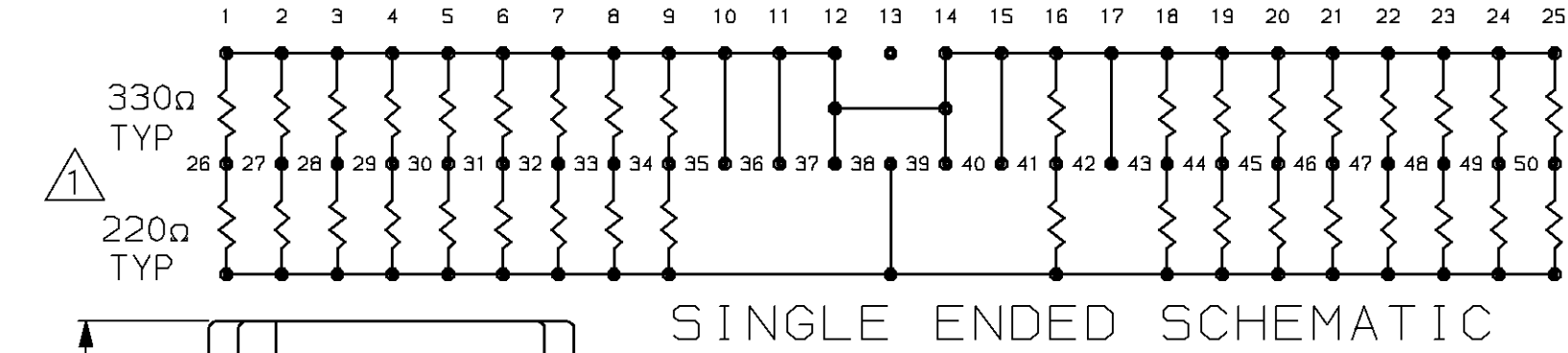
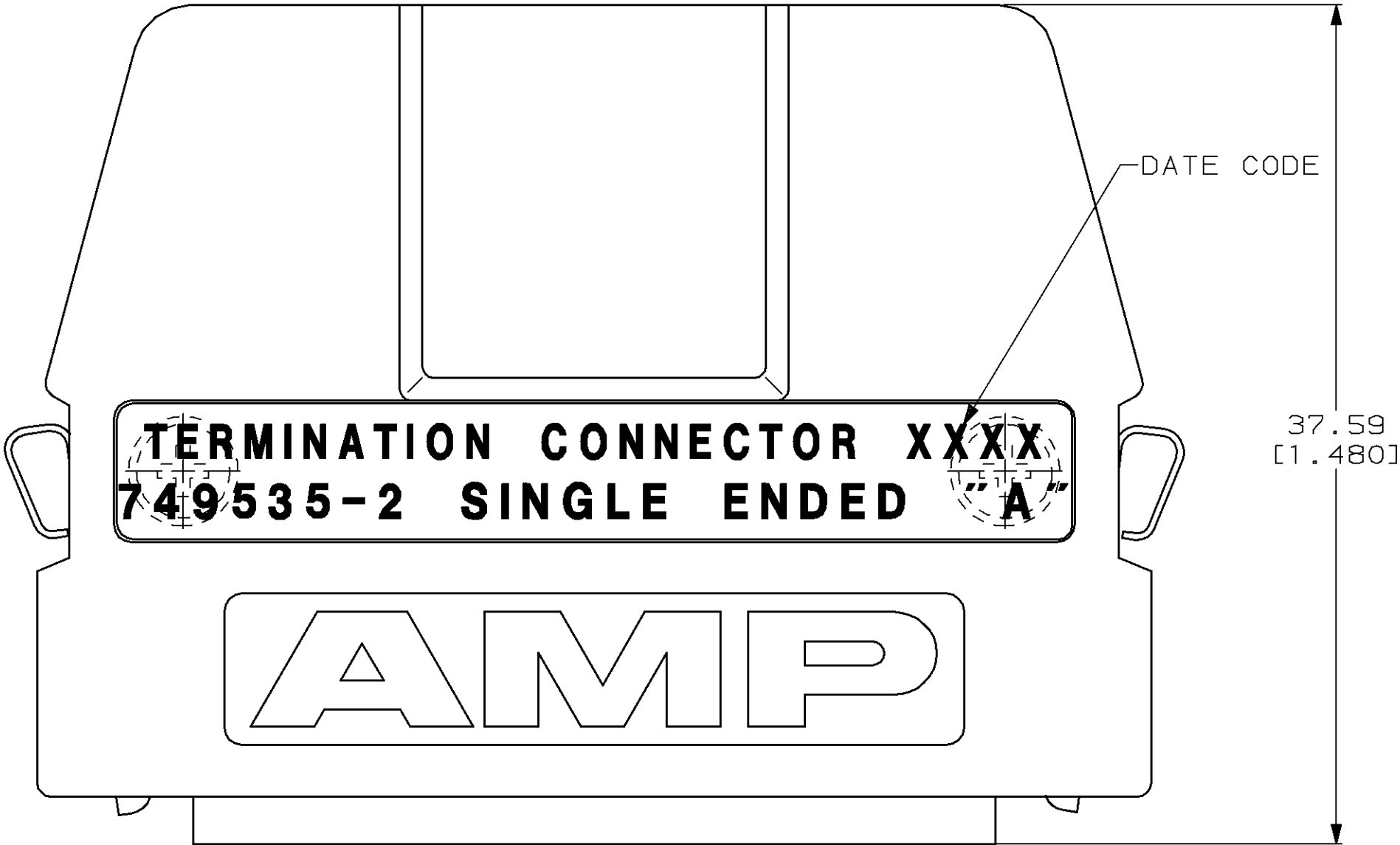
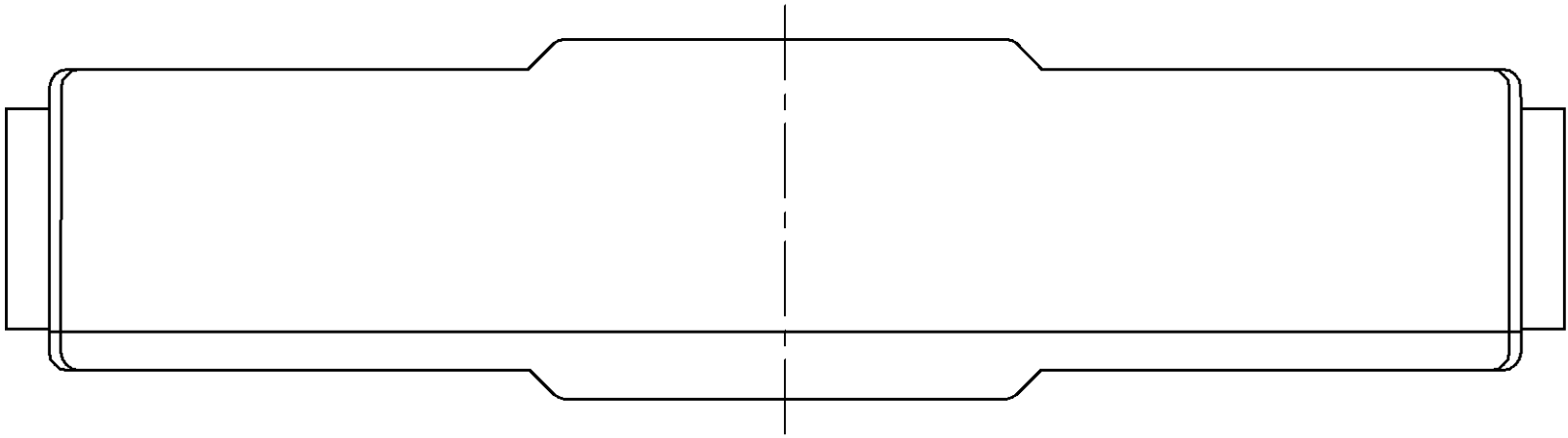
Tel: +86-755-8981 8866 Fax: +86-755-8427 6832

Email & Skype: info@chipsmall.com Web: www.chipsmall.com

Address: A1208, Overseas Decoration Building, #122 Zhenhua RD., Futian, Shenzhen, China



MOD	LOC	DIST	P	F	ZONE	LTR	DESCRIPTION	DATE	APPD
11	BD	62				E	REV PER EC 0020-601-93	10/27/93	PR
						F	REV PER EC 0020-1283-94	01/04/95	PR



TOLERANCE: ±5%

DO NOT SCALE PRINT. UNLESS SPECIFIED DIMENSIONS IN mm [INCHES] TOLERANCES ON : 2 PLC DEC ±.25 [.010] 3 PLC DEC ± - ANGLES ± - MATERIAL HOUSING: ZINC DIE CASTING CONTACT: PHOS BRONZE INSERT: THERMOPLASTIC RESISTOR: THICK FILM NETWORK ON ALUMINA SUBSTRATE LATCHES: STAINLESS STEEL FINISH HOUSING: NICKEL OVER COPPER CONTACT: 30µ" GOLD OVER NICKEL LATCHES: NONE			DR 09/25/89 S.G.SMITH	<div>AMP</div> AMP INCORPORATED Harrisburg, Pa. 17105		
			CHK 09/25/89 K.ULERY			
			APPD 09/25/89 B. MOSSER	NAME TERMINATION CONNECTOR AMPLIMITE .050 Series 50 POSN, PLUG		
			APPD 09/25/89 E.MYERS			
			PRODUCT SPEC -			
			APPLICATION SPEC -	SIZE C	CAGE CODE 00779	DRAWING NO 749535-2
			WEIGHT -	SCALE 4:1	SHEET 1 OF 1	