



Chipsmall Limited consists of a professional team with an average of over 10 year of expertise in the distribution of electronic components. Based in Hongkong, we have already established firm and mutual-benefit business relationships with customers from,Europe,America and south Asia,supplying obsolete and hard-to-find components to meet their specific needs.

With the principle of "Quality Parts,Customers Priority,Honest Operation,and Considerate Service",our business mainly focus on the distribution of electronic components. Line cards we deal with include Microchip,ALPS,ROHM,Xilinx,Pulse,ON,Everlight and Freescale. Main products comprise IC,Modules,Potentiometer,IC Socket,Relay,Connector.Our parts cover such applications as commercial,industrial, and automotives areas.

We are looking forward to setting up business relationship with you and hope to provide you with the best service and solution. Let us make a better world for our industry!



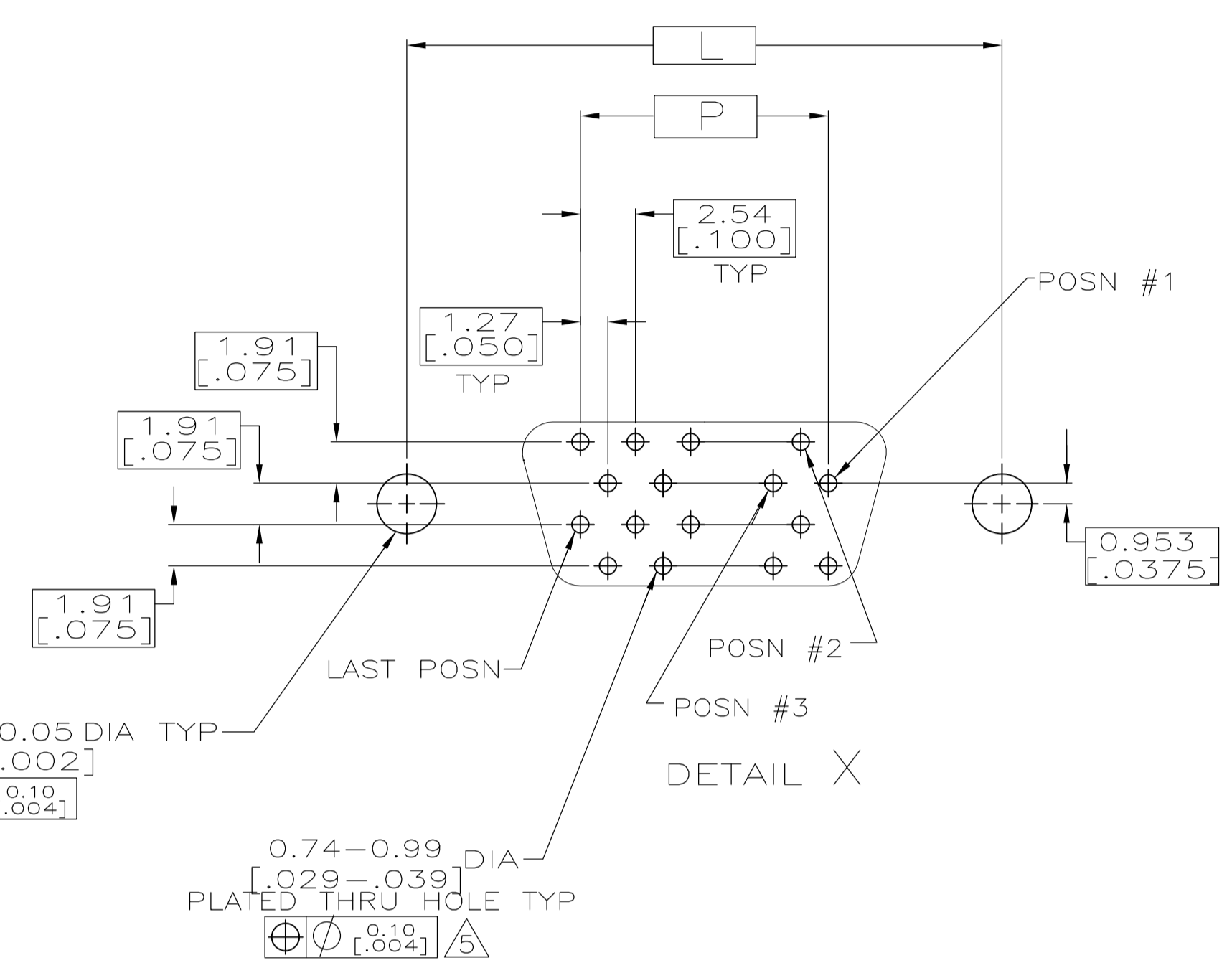
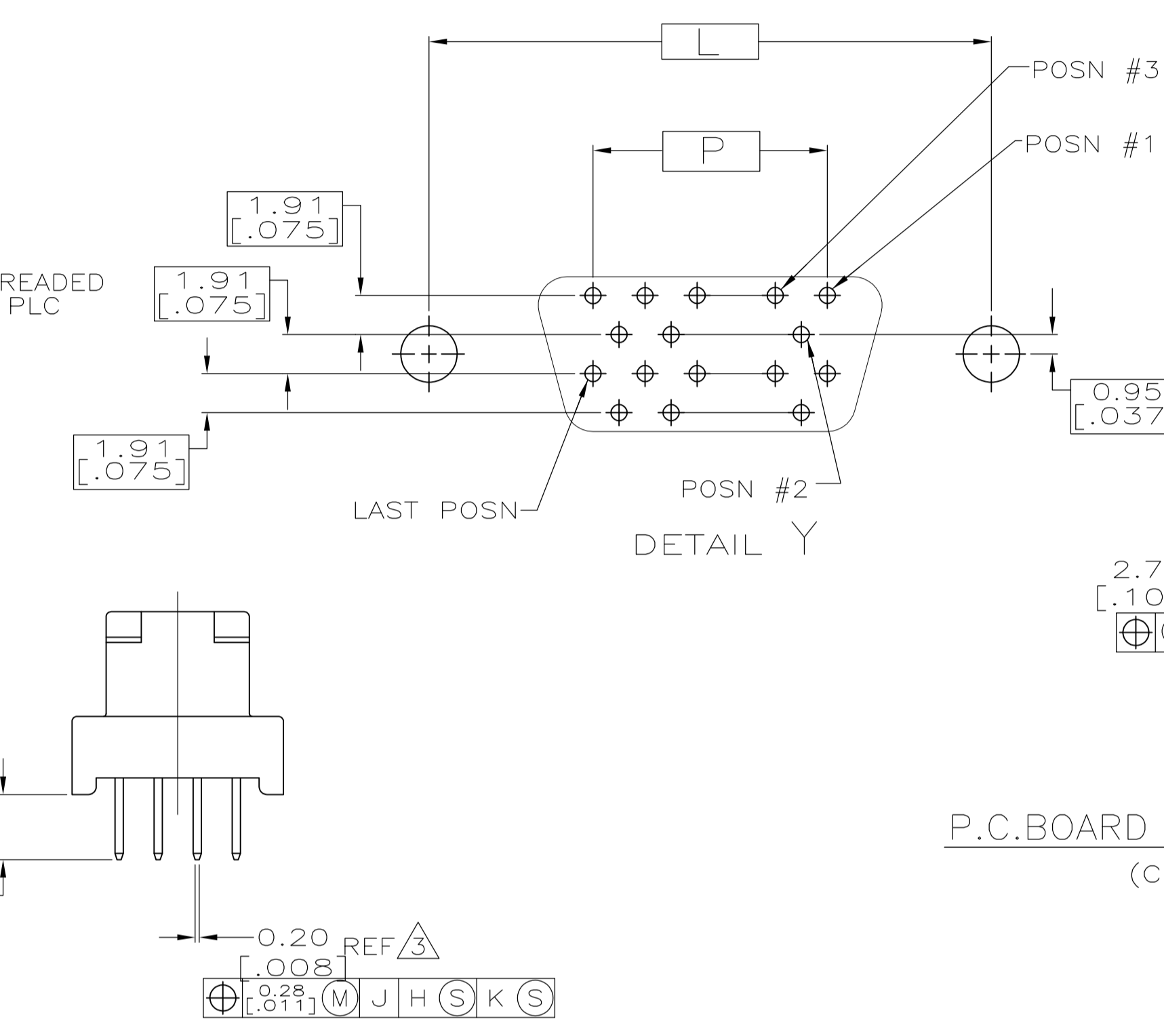
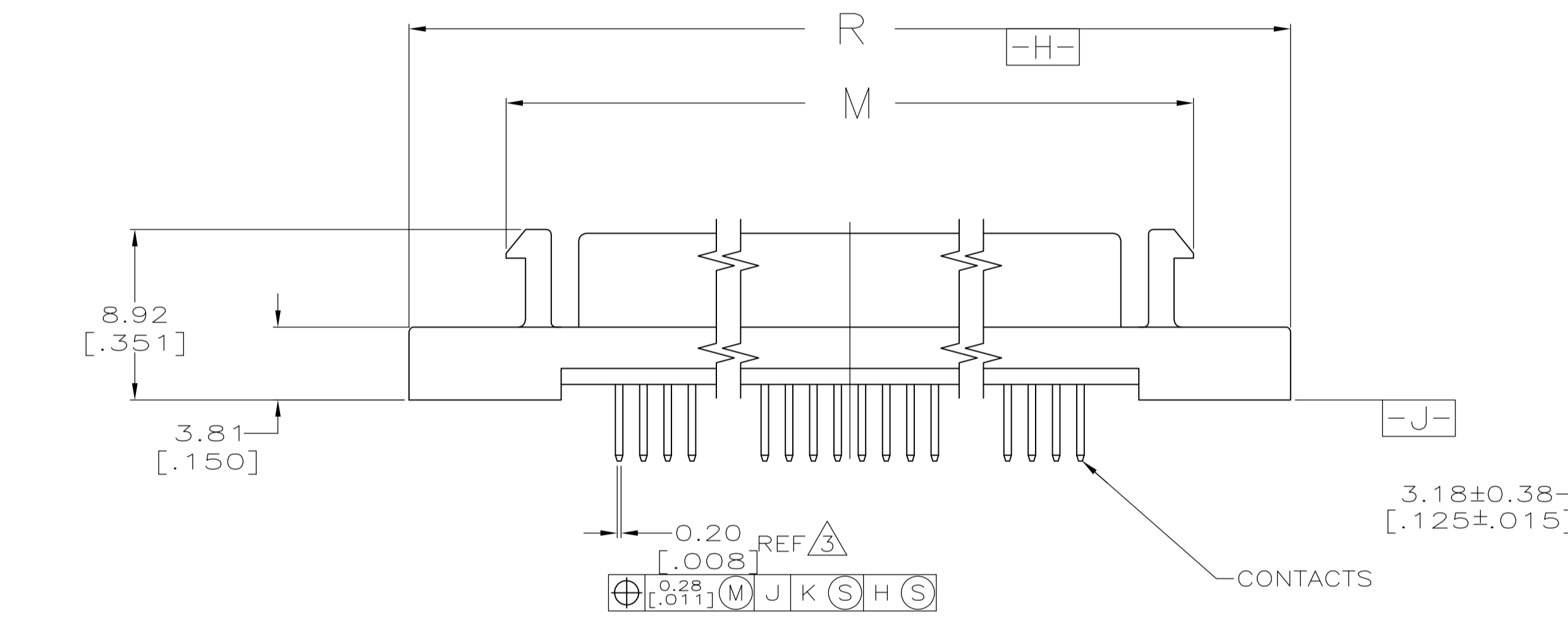
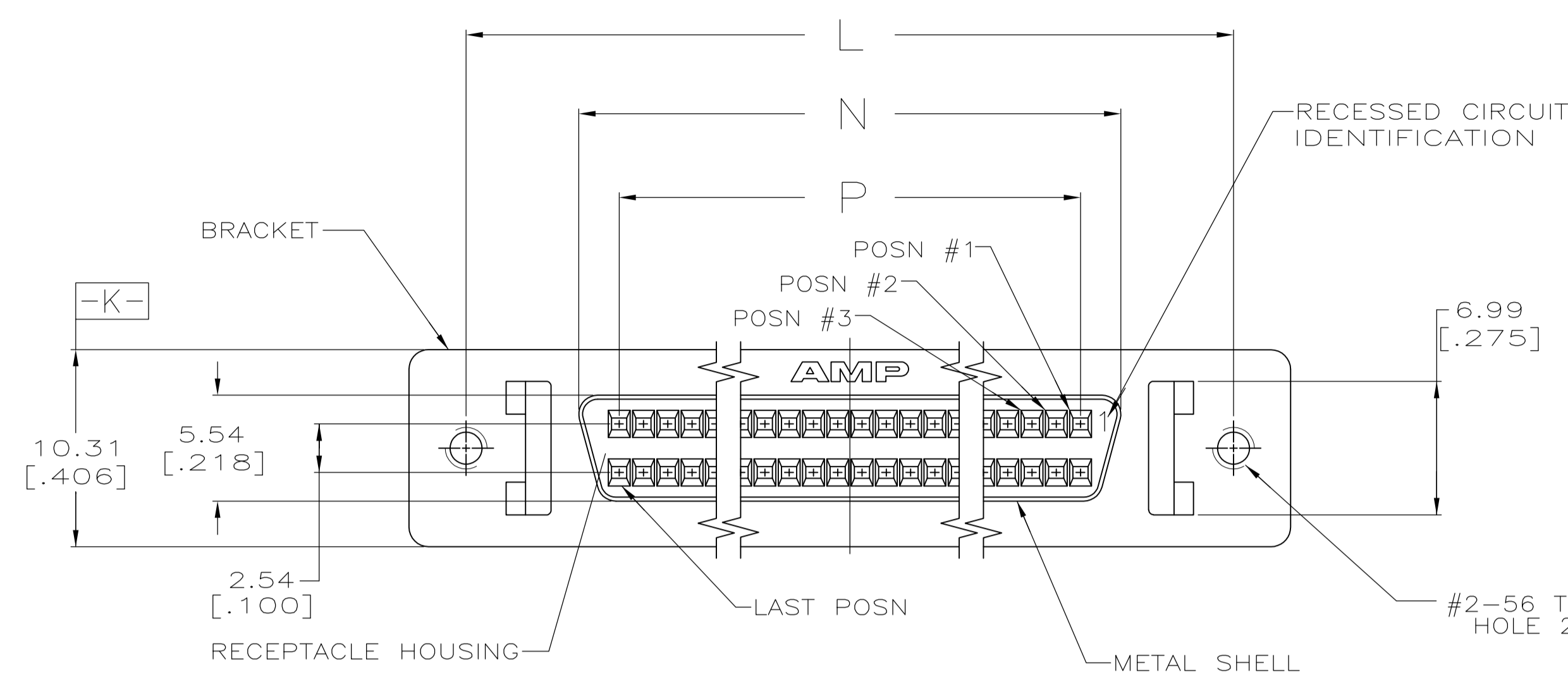
## Contact us

Tel: +86-755-8981 8866 Fax: +86-755-8427 6832

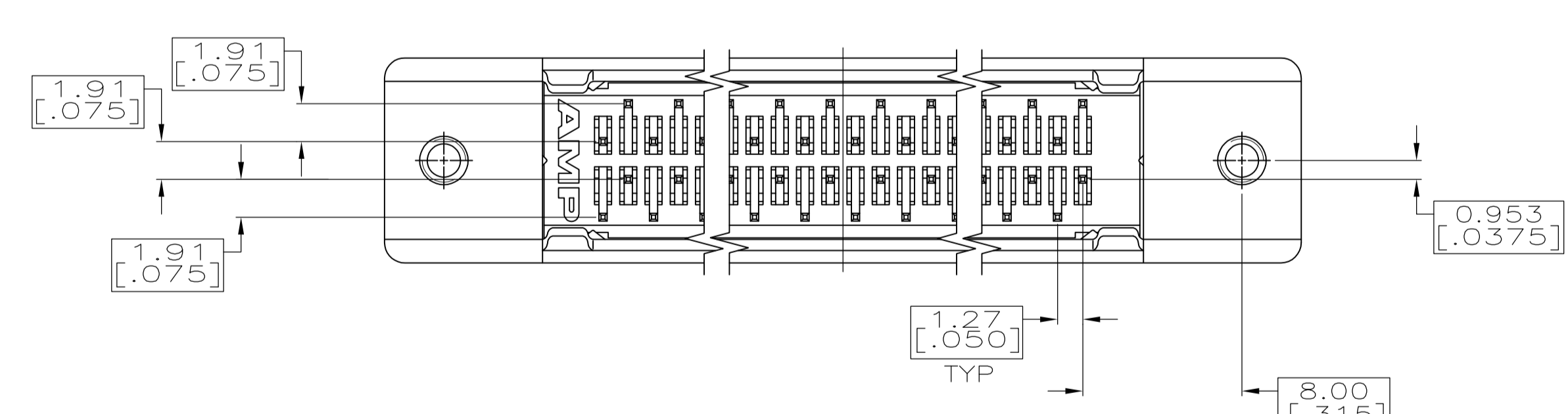
Email & Skype: info@chipsmall.com Web: www.chipsmall.com

Address: A1208, Overseas Decoration Building, #122 Zhenhua RD., Futian, Shenzhen, China





P.C.BOARD MOUNTING DIMENSIONS (CONNECTOR SIDE)



SUPERSEDED BY 749721-5

PWB PATTERN	R	P	N	M	L	CONTACT FINISH	NO. OF POSN	PART NUMBER
Y	52.45 [2.065]	30.48 [1.200]	34.70 [1.366]	42.29 [1.665]	46.48 [1.830]	2	50	1-749721-1
X	96.90 [3.815]	74.93 [2.950]	79.15 [3.116]	86.74 [3.415]	90.93 [3.580]	1	120	1-749721-0
X	84.20 [3.315]	62.23 [2.450]	66.45 [2.616]	74.04 [2.915]	78.23 [3.080]	1	100	749721-9
X	71.50 [2.815]	49.53 [1.950]	53.75 [2.116]	61.34 [2.415]	65.53 [2.580]	1	80	749721-8
X	63.88 [2.515]	41.91 [1.650]	46.13 [1.816]	53.72 [2.115]	57.91 [2.280]	1	68	749721-7
X	58.80 [2.315]	36.83 [1.450]	41.05 [1.616]	48.64 [1.915]	52.83 [2.080]	1	60	749721-6
Y	52.45 [2.065]	30.48 [1.200]	34.70 [1.366]	42.29 [1.665]	46.48 [1.830]	1	50	749721-5
X	46.10 [1.815]	24.13 [0.950]	28.34 [1.116]	35.94 [1.415]	40.13 [1.580]	1	40	749721-4
X	38.48 [1.515]	16.51 [0.650]	20.73 [0.816]	28.32 [1.115]	32.51 [1.280]	1	28	749721-3
Y	37.21 [1.465]	15.24 [0.600]	19.46 [0.766]	27.05 [1.065]	31.24 [1.230]	1	26	749721-2
X	33.40 [1.315]	11.43 [0.450]	15.65 [0.616]	23.24 [0.915]	27.43 [1.080]	1	20	749721-1

- 1 FINISH  
CONTACTS: EITHER 0.76µm [.000030] MIN GOLD FOR A LENGTH OF 0.64 [.025] MIN, 0.13 [.005] MAX FROM MATING END OR GOLD FLASH OVER PALLADIUM NICKEL, 0.76µm [.000030] MIN TOTAL FOR A LENGTH OF 0.64 [.025] MIN, 0.13 [.005] MAX FROM MATING END. 3.81µm [.000150] MIN TIN-LEAD ON SOLDER POST, BOTH OVER 1.27µm [.000050] MIN NICKEL UNDERPLATE.  
SHELL: 5.08µm [.000200] MIN NICKEL OVER 1.27µm [.000050] MIN COPPER.
- 2 FINISH  
CONTACTS: 1.27µm [.000050] MIN DURAGOLD FOR A LENGTH OF 0.64 [.025] MIN, 0.13 [.005] MAX FROM MATING END, 3.81µm [.000150] MIN TIN-LEAD ON SOLDER POST, BOTH OVER 1.27µm [.000050] MIN NICKEL.  
SHELL: 5.08µm [.000200] MIN NICKEL OVER 1.27µm [.000050] MIN COPPER.
- 3 POSITION TOLERANCE APPLIES AT TIP ONLY.
- 4 MATERIAL  
CONTACTS: PHOSPHOR BRONZE  
HOUSING: UL V-O RATED THERMOPLASTIC COLOR BLACK  
BRACKET: ZINC  
SHELL: CARBON STEEL.
- 5 ACTUAL HOLE SIZE USED WILL DEPEND ON TRACE ROUTING REQUIREMENTS BETWEEN HOLES AND CONNECTOR PLACEMENT TECHNIQUE.
- 6 OBSOLETE PART NUMBER.

THIS DRAWING IS A CONTROLLED DOCUMENT.

DIMENSIONS: mm [INCHES]	TOLERANCES UNLESS OTHERWISE SPECIFIED:	DIN JACK ROOT 5-18-89	APVD M.A. VISELLI 5-18-89
0 PLC ± -	1 PLC ± -	2 PLC ± 0.13 [.005]	3 PLC ± -
4 PLC ± -	ANGLES ± -	PRODUCT SPEC	APPLICATION SPEC
MATERIAL 4	FINISH SEE TABLE	WEIGHT	SIZE CASE CODE DRAWING NO. RESTRICTED TO
		CUSTOMER DRAWING	A1 00779 C=749721

SCALE 4:1 SHEET 1 OF 1 REV P1

**STE** TE Connectivity

RECEPTACLE ASSEMBLY, SHIELDED, VERTICAL, AMPLIMITE .050 Series