



Chipsmall Limited consists of a professional team with an average of over 10 year of expertise in the distribution of electronic components. Based in Hongkong, we have already established firm and mutual-benefit business relationships with customers from,Europe,America and south Asia,supplying obsolete and hard-to-find components to meet their specific needs.

With the principle of “Quality Parts,Customers Priority,Honest Operation,and Considerate Service”,our business mainly focus on the distribution of electronic components. Line cards we deal with include Microchip,ALPS,ROHM,Xilinx,Pulse,ON,Everlight and Freescale. Main products comprise IC,Modules,Potentiometer,IC Socket,Relay,Connector.Our parts cover such applications as commercial,industrial, and automotives areas.

We are looking forward to setting up business relationship with you and hope to provide you with the best service and solution. Let us make a better world for our industry!



## Contact us

Tel: +86-755-8981 8866 Fax: +86-755-8427 6832

Email & Skype: info@chipsmall.com Web: www.chipsmall.com

Address: A1208, Overseas Decoration Building, #122 Zhenhua RD., Futian, Shenzhen, China



## Important notice

Dear Customer,

On 7 February 2017 the former NXP Standard Product business became a new company with the tradename **Nexperia**. Nexperia is an industry leading supplier of Discrete, Logic and PowerMOS semiconductors with its focus on the automotive, industrial, computing, consumer and wearable application markets

In data sheets and application notes which still contain NXP or Philips Semiconductors references, use the references to Nexperia, as shown below.

Instead of <http://www.nxp.com>, <http://www.philips.com/> or <http://www.semiconductors.philips.com/>, use <http://www.nexperia.com>

Instead of [sales.addresses@www.nxp.com](mailto:sales.addresses@www.nxp.com) or [sales.addresses@www.semiconductors.philips.com](mailto:sales.addresses@www.semiconductors.philips.com), use [salesaddresses@nexperia.com](mailto:salesaddresses@nexperia.com) (email)

Replace the copyright notice at the bottom of each page or elsewhere in the document, depending on the version, as shown below:

- © NXP N.V. (year). All rights reserved or © Koninklijke Philips Electronics N.V. (year). All rights reserved

Should be replaced with:

- © **Nexperia B.V. (year). All rights reserved.**

If you have any questions related to the data sheet, please contact our nearest sales office via e-mail or telephone (details via [salesaddresses@nexperia.com](mailto:salesaddresses@nexperia.com)). Thank you for your cooperation and understanding,

Kind regards,

Team Nexperia

# DATA SHEET

**74ABT02**

Quad 2-input NOR gate

Product specification

1995 Sep 18

IC24 Data Handbook

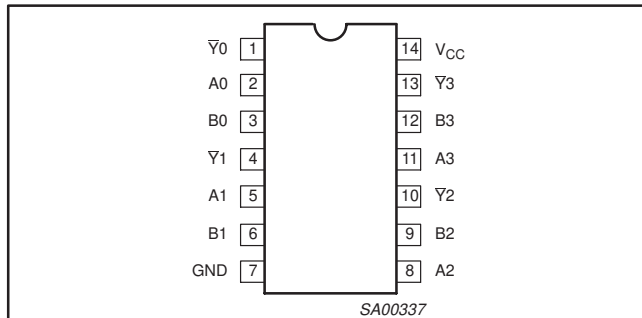
# Quad 2-input NOR gate

# 74ABT02

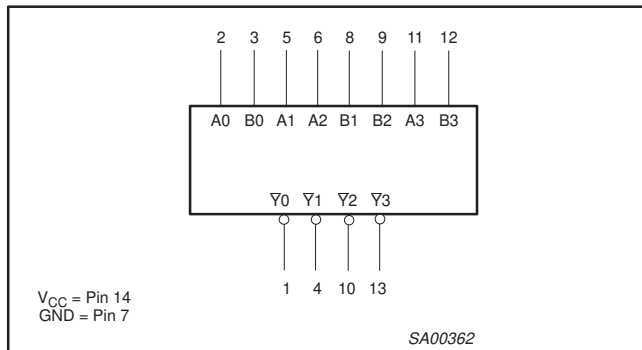
## QUICK REFERENCE DATA

| SYMBOL                   | PARAMETER                                    | CONDITIONS<br>$T_{amb} = 25^{\circ}\text{C};$<br>$GND = 0V$ | TYPICAL    | UNIT          |
|--------------------------|--|---|------------|---------------|
| $t_{PLH}$<br>$t_{PHL}$   | Propagation delay<br>An or Bn to $\bar{Y}_n$ | $C_L = 50\text{pF};$<br>$V_{CC} = 5V$                       | 2.4<br>1.8 | ns            |
| $t_{OSLH}$<br>$t_{OSHL}$ | Output to Output skew                        |   | 0.4        | ns            |
| $C_{IN}$                 | Input capacitance                            | $V_I = 0V$ or $V_{CC}$                                      | 3          | pF            |
| $I_{CC}$                 | Total supply current                         | Outputs disabled;<br>$V_{CC} = 5.5V$                        | 50         | $\mu\text{A}$ |

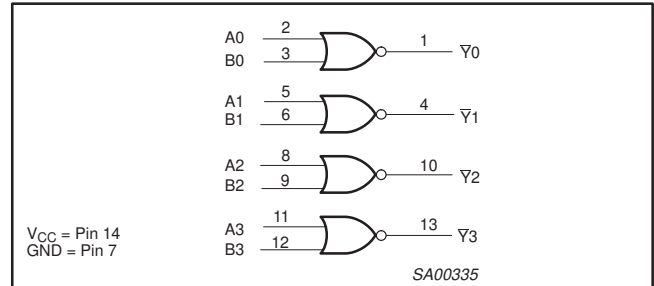
## PIN CONFIGURATION



## LOGIC SYMBOL



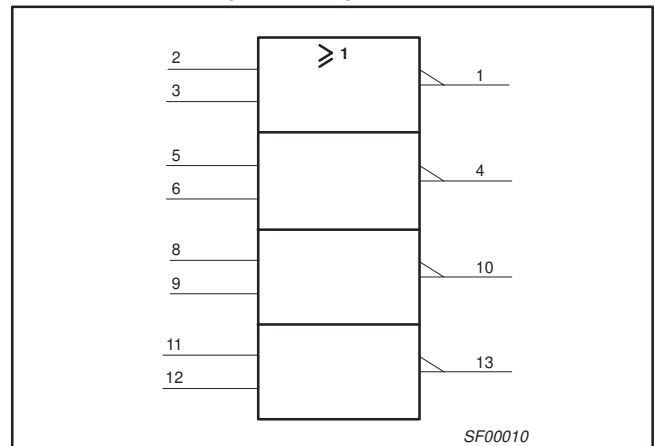
## LOGIC DIAGRAM



## PIN DESCRIPTION

| PIN NUMBER               | SYMBOL      | NAME AND FUNCTION       |
|--------------------------|-------------|-------------------------|
| 2, 3, 5, 6, 8, 9, 11, 12 | An-Bn       | Data inputs             |
| 1, 4, 10, 13             | $\bar{Y}_n$ | Data outputs            |
| 7                        | GND         | Ground (0V)             |
| 14                       | $V_{CC}$    | Positive supply voltage |

## LOGIC SYMBOL (IEEE/IEC)



## FUNCTION TABLE

| INPUTS |    | OUTPUT      |
|--------|----|-------------|
| An     | Bn | $\bar{Y}_n$ |
| L      | L  | H           |
| L      | H  | L           |
| H      | L  | L           |
| H      | H  | L           |

### NOTES:

- H = High voltage level
- L = Low voltage level

## ORDERING INFORMATION

| PACKAGES                    | TEMPERATURE RANGE | OUTSIDE NORTH AMERICA | NORTH AMERICA | DWG NUMBER |
|-----------------------------|-------------------|-----------------------|---------------|------------|
| 14-Pin Plastic DIP          | -40°C to +85°C    | 74ABT02 N             | 74ABT02 N     | SOT27-1    |
| 14-Pin plastic SO           | -40°C to +85°C    | 74ABT02 D             | 74ABT02 D     | SOT108-1   |
| 14-Pin Plastic SSOP Type II | -40°C to +85°C    | 74ABT02 DB            | 74ABT02 DB    | SOT337-1   |
| 14-Pin Plastic TSSOP Type I | -40°C to +85°C    | 74ABT02 PW            | 74ABT02PW DH  | SOT402-1   |



## Quad 2-input NOR gate

74ABT02

**ABSOLUTE MAXIMUM RATINGS<sup>1, 2</sup>**

| SYMBOL    | PARAMETER                      | CONDITIONS                  | RATING       | UNIT |
|-----------|--------------------------------|-----------------------------|--------------|------|
| $V_{CC}$  | DC supply voltage              |                             | -0.5 to +7.0 | V    |
| $I_{IK}$  | DC input diode current         | $V_I < 0$                   | -18          | mA   |
| $V_I$     | DC input voltage <sup>3</sup>  |                             | -1.2 to +7.0 | V    |
| $I_{OK}$  | DC output diode current        | $V_O < 0$                   | -50          | mA   |
| $V_{OUT}$ | DC output voltage <sup>3</sup> | output in Off or High state | -0.5 to +5.5 | V    |
| $I_{OUT}$ | DC output current              | output in Low state         | 40           | mA   |
| $T_{stg}$ | Storage temperature range      |                             | -65 to 150   | °C   |

**NOTES:**

- Stresses beyond those listed may cause permanent damage to the device. These are stress ratings only and functional operation of the device at these or any other conditions beyond those indicated under "recommended operating conditions" is not implied. Exposure to absolute-maximum-rated conditions for extended periods may affect device reliability.
- The performance capability of a high-performance integrated circuit in conjunction with its thermal environment can create junction temperatures which are detrimental to reliability. The maximum junction temperature of this integrated circuit should not exceed 150°C.
- The input and output voltage ratings may be exceeded if the input and output current ratings are observed.

**RECOMMENDED OPERATING CONDITIONS**

| SYMBOL              | PARAMETER                            | LIMITS |          | UNIT |
|---------------------|--------------------------------------|--------|----------|------|
|                     |                                      | MIN    | MAX      |      |
| $V_{CC}$            | DC supply voltage                    | 4.5    | 5.5      | V    |
| $V_I$               | Input voltage                        | 0      | $V_{CC}$ | V    |
| $V_{IH}$            | High-level input voltage             | 2.0    |          | V    |
| $V_{IL}$            | Low-level input voltage              |        | 0.8      | V    |
| $I_{OH}$            | High-level output current            |        | -15      | mA   |
| $I_{OL}$            | Low-level output current             |        | 20       | mA   |
| $\Delta t/\Delta v$ | Input transition rise or fall rate   | 0      | 5        | ns/V |
| $T_{amb}$           | Operating free-air temperature range | -40    | +85      | °C   |

**DC ELECTRICAL CHARACTERISTICS**

| SYMBOL          | PARAMETER  | TEST CONDITIONS   | LIMITS                        |            |           |   |           | UNIT          |
|-----------------|--|---|-------------------------------|------------|-----------|---|-----------|---------------|
|                 |  |   | $T_{amb} = +25^\circ\text{C}$ |            |           | $T_{amb} = -40^\circ\text{C}$<br>to $+85^\circ\text{C}$ |           |               |
|                 |  |   | MIN                           | TYP        | MAX       | MIN   | MAX       |               |
| $V_{IK}$        | Input clamp voltage                                  | $V_{CC} = 4.5\text{V}; I_{IK} = -18\text{mA}$                                   |                               | -0.9       | -1.2      |   | -1.2      | V             |
| $V_{OH}$        | High-level output voltage                            | $V_{CC} = 4.5\text{V}; I_{OH} = -15\text{mA}; V_I = V_{IL}$ or $V_{IH}$         | 2.5                           | 2.9        |           | 2.5   |           | V             |
| $V_{OL}$        | Low-level output voltage                             | $V_{CC} = 4.5\text{V}; I_{OL} = 20\text{mA}; V_I = V_{IL}$ or $V_{IH}$          |                               | 0.35       | 0.5       |   | 0.5       | V             |
| $I_I$           | Input leakage current                                | $V_{CC} = 5.5\text{V}; V_I = \text{GND}$ or $5.5\text{V}$                       |                               | $\pm 0.01$ | $\pm 1.0$ |   | $\pm 1.0$ | $\mu\text{A}$ |
| $I_{OFF}$       | Power-off leakage current                            | $V_{CC} = 0.0\text{V}; V_O$ or $V_I \leq 4.5\text{V}$                           |                               | $\pm 5.0$  | $\pm 100$ |   | $\pm 100$ | $\mu\text{A}$ |
| $I_{CEX}$       | Output High leakage current                          | $V_{CC} = 5.5\text{V}; V_O = 5.5\text{V}; V_I = \text{GND}$ or $V_{CC}$         |                               | 5.0        | 50        |   | 50        | $\mu\text{A}$ |
| $I_O$           | Output current <sup>1</sup>                          | $V_{CC} = 5.5\text{V}; V_O = 2.5\text{V}$                                       | -50                           | -75        | -180      | -50   | -180      | mA            |
| $I_{CC}$        | Quiescent supply current                             | $V_{CC} = 5.5\text{V}; V_I = \text{GND}$ or $V_{CC}$                            |                               | 2          | 50        |   | 50        | $\mu\text{A}$ |
| $\Delta I_{CC}$ | Additional supply current per input pin <sup>2</sup> | $V_{CC} = 5.5\text{V};$ One data input at 3.4V, other inputs at $V_{CC}$ or GND |                               | 0.25       | 500       |   | 500       | $\mu\text{A}$ |

**NOTES:**

- Not more than one output should be tested at a time, and the duration of the test should not exceed one second.
- This is the increase in supply current for each input at 3.4V.

# Quad 2-input NOR gate

74ABT02

## AC CHARACTERISTICS

GND = 0V;  $t_R = t_F = 2.5\text{ns}$ ;  $C_L = 50\text{pF}$ ,  $R_L = 500\Omega$

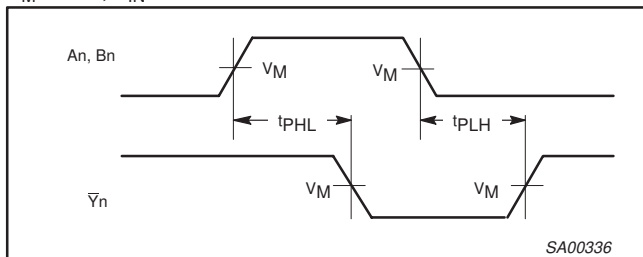
| SYMBOL                                 | PARAMETER  | WAVEFORM | LIMITS   |     |     |  |     | UNIT |
|--|--|----------|--|-----|-----|--|-----|------|
|  |  |          | $T_{\text{amb}} = +25^\circ\text{C}$<br>$V_{\text{CC}} = +5.0\text{V}$ |     |     | $T_{\text{amb}} = -40^\circ\text{C to } +85^\circ\text{C}$<br>$V_{\text{CC}} = +5.0\text{V} \pm 0.5\text{V}$ |     |      |
|  |  |          | MIN  | TYP | MAX | MIN  | MAX |      |
| $t_{\text{PLH}}$<br>$t_{\text{PHL}}$   | Propagation delay<br>An or Bn to $\bar{Y}_n$     | 1        | 1.0  | 2.4 | 3.7 | 1.0  | 4.4 | ns   |
| $t_{\text{OSHL}}$<br>$t_{\text{OSLH}}$ | Output to Output skew<br>An or Bn to $\bar{Y}_n$ | 2        |  | 0.4 | 0.5 |  | 0.5 | ns   |

**NOTE:**

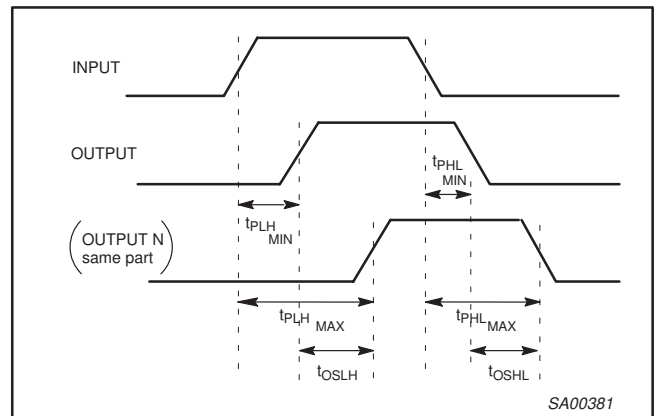
1. Skew is defined as the absolute value of the difference between the actual propagation delay for any two separate outputs of the same device. The specification applies to any outputs switching in the the same direction, either HIGH-to-LOW ( $t_{\text{OSHL}}$ ) or LOW-to-HIGH ( $t_{\text{OSLH}}$ ); parameter guaranteed by design.

## AC WAVEFORMS

$V_M = 1.5\text{V}$ ,  $V_{\text{IN}} = \text{GND to } 3.0\text{V}$



Waveform 1. Propagation delay for inverting outputs



Waveform 2. Common edge skew

## TEST CIRCUIT AND WAVEFORMS

**Test Circuit for Outputs**

$V_M = 1.5\text{V}$

**Input Pulse Definition**

**DEFINITIONS**

$R_L$  = Load resistor; see AC CHARACTERISTICS for value.

$C_L$  = Load capacitance includes jig and probe capacitance; see AC CHARACTERISTICS for value.

$R_T$  = Termination resistance should be equal to  $Z_{\text{OUT}}$  of pulse generators.

| FAMILY | INPUT PULSE REQUIREMENTS |           |       |       |       |
|--------|--------------------------|-----------|-------|-------|-------|
|        | Amplitude                | Rep. Rate | $t_w$ | $t_R$ | $t_F$ |
| 74ABT  | 3.0V                     | 1MHz      | 500ns | 2.5ns | 2.5ns |

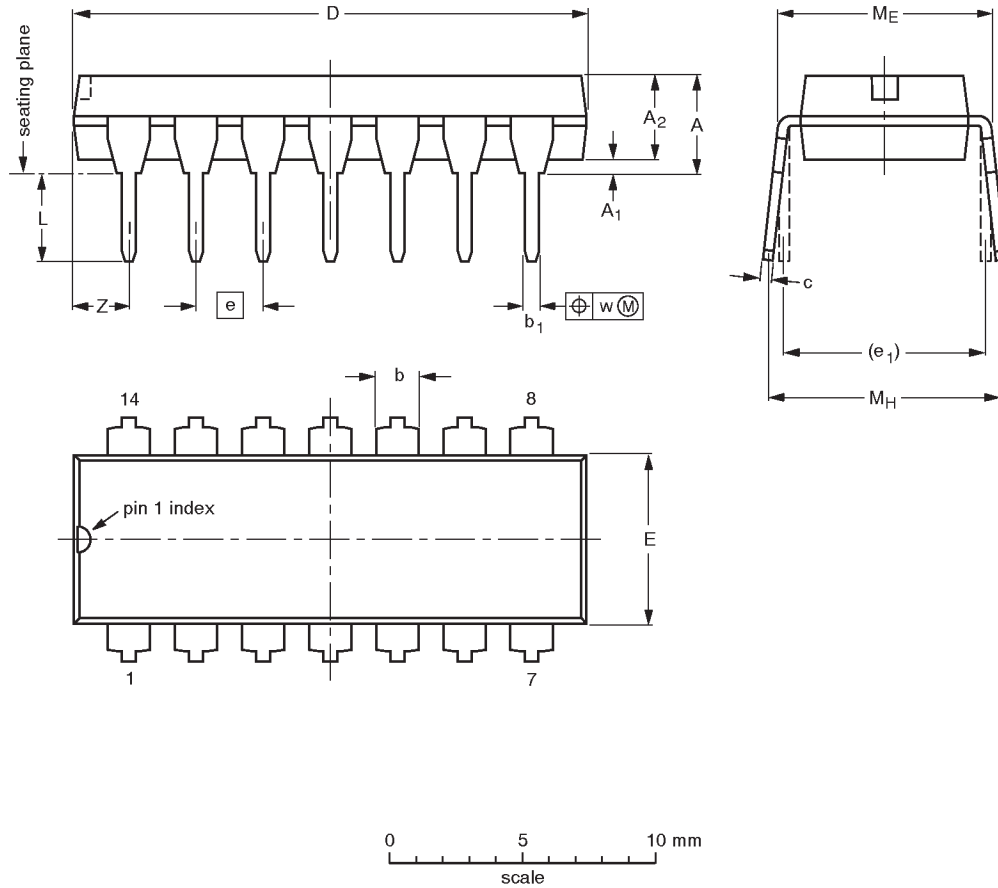
SH00067

# Quad 2-input NOR gate

## 74ABT02

**DIP14: plastic dual in-line package; 14 leads (300 mil)**

**SOT27-1**



**DIMENSIONS (inch dimensions are derived from the original mm dimensions)**

| UNIT   | A max. | A <sub>1</sub> min. | A <sub>2</sub> max. | b              | b <sub>1</sub> | c              | D <sup>(1)</sup> | E <sup>(1)</sup> | e    | e <sub>1</sub> | L            | M <sub>E</sub> | M <sub>H</sub> | w     | Z <sup>(1)</sup> max. |
|--------|--------|---------------------|---------------------|----------------|----------------|----------------|------------------|------------------|------|----------------|--------------|----------------|----------------|-------|-----------------------|
| mm     | 4.2    | 0.51                | 3.2                 | 1.73<br>1.13   | 0.53<br>0.38   | 0.36<br>0.23   | 19.50<br>18.55   | 6.48<br>6.20     | 2.54 | 7.62           | 3.60<br>3.05 | 8.25<br>7.80   | 10.0<br>8.3    | 0.254 | 2.2                   |
| inches | 0.17   | 0.020               | 0.13                | 0.068<br>0.044 | 0.021<br>0.015 | 0.014<br>0.009 | 0.77<br>0.73     | 0.26<br>0.24     | 0.10 | 0.30           | 0.14<br>0.12 | 0.32<br>0.31   | 0.39<br>0.33   | 0.01  | 0.087                 |

**Note**

1. Plastic or metal protrusions of 0.25 mm maximum per side are not included.

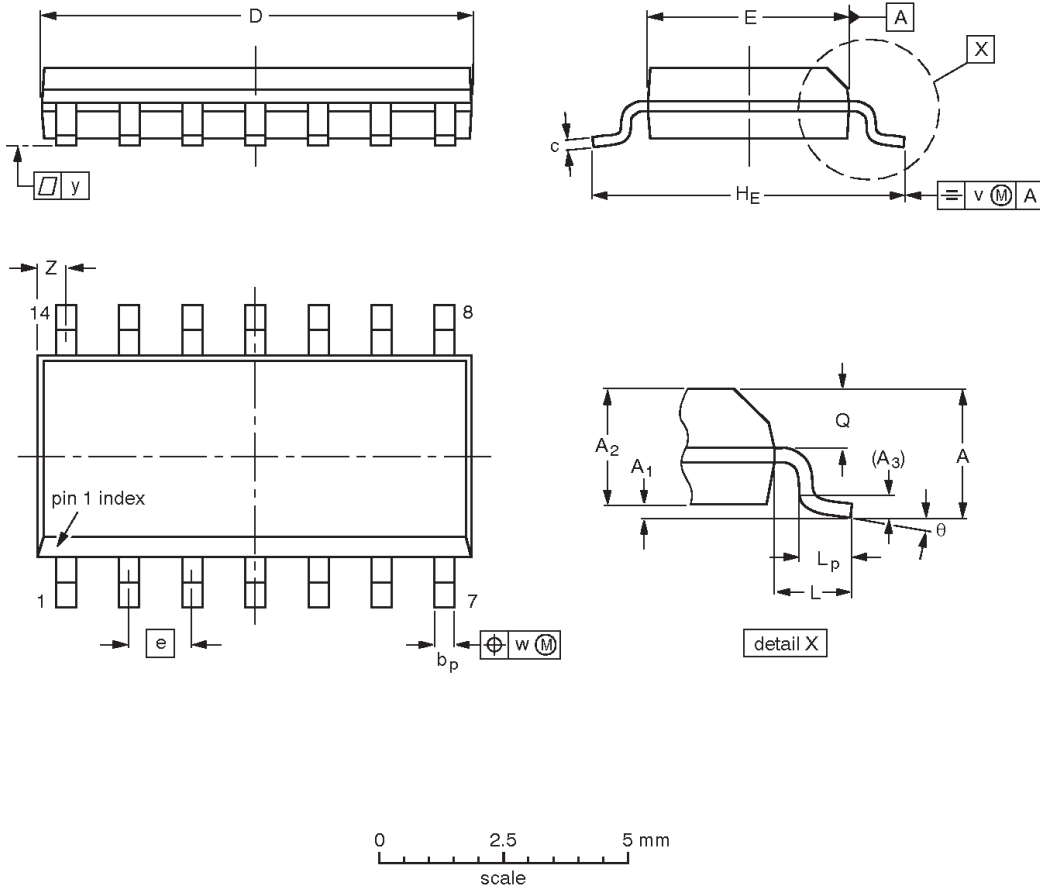
| OUTLINE VERSION | REFERENCES |          |      | EUROPEAN PROJECTION | ISSUE DATE           |
|-----------------|------------|----------|------|---------------------|----------------------|
|                 | IEC        | JEDEC    | EIAJ |                     |                      |
| SOT27-1         | 050G04     | MO-001AA |      |                     | 92-11-17<br>95-03-11 |

# Quad 2-input NOR gate

# 74ABT02

**SO14: plastic small outline package; 14 leads; body width 3.9 mm**

**SOT108-1**



**DIMENSIONS (inch dimensions are derived from the original mm dimensions)**

| UNIT   | A max. | A <sub>1</sub> | A <sub>2</sub> | A <sub>3</sub> | b <sub>p</sub> | c                | D <sup>(1)</sup> | E <sup>(1)</sup> | e     | H <sub>E</sub> | L     | L <sub>p</sub> | Q              | v    | w    | y     | z <sup>(1)</sup> | θ        |
|--------|--------|----------------|----------------|----------------|----------------|------------------|------------------|------------------|-------|----------------|-------|----------------|----------------|------|------|-------|------------------|----------|
| mm     | 1.75   | 0.25<br>0.10   | 1.45<br>1.25   | 0.25           | 0.49<br>0.36   | 0.25<br>0.19     | 8.75<br>8.55     | 4.0<br>3.8       | 1.27  | 6.2<br>5.8     | 1.05  | 1.0<br>0.4     | 0.7<br>0.6     | 0.25 | 0.25 | 0.1   | 0.7<br>0.3       | 8°<br>0° |
| inches | 0.069  | 0.010<br>0.004 | 0.057<br>0.049 | 0.01           | 0.019<br>0.014 | 0.0100<br>0.0075 | 0.35<br>0.34     | 0.16<br>0.15     | 0.050 | 0.244<br>0.228 | 0.041 | 0.039<br>0.016 | 0.028<br>0.024 | 0.01 | 0.01 | 0.004 | 0.028<br>0.012   |          |

**Note**

1. Plastic or metal protrusions of 0.15 mm maximum per side are not included.

| OUTLINE VERSION | REFERENCES |          |      | EUROPEAN PROJECTION | ISSUE DATE           |
|-----------------|------------|----------|------|---------------------|----------------------|
|                 | IEC        | JEDEC    | EIAJ |                     |                      |
| SOT108-1        | 076E06S    | MS-012AB |      |                     | 95-01-23<br>97-05-22 |

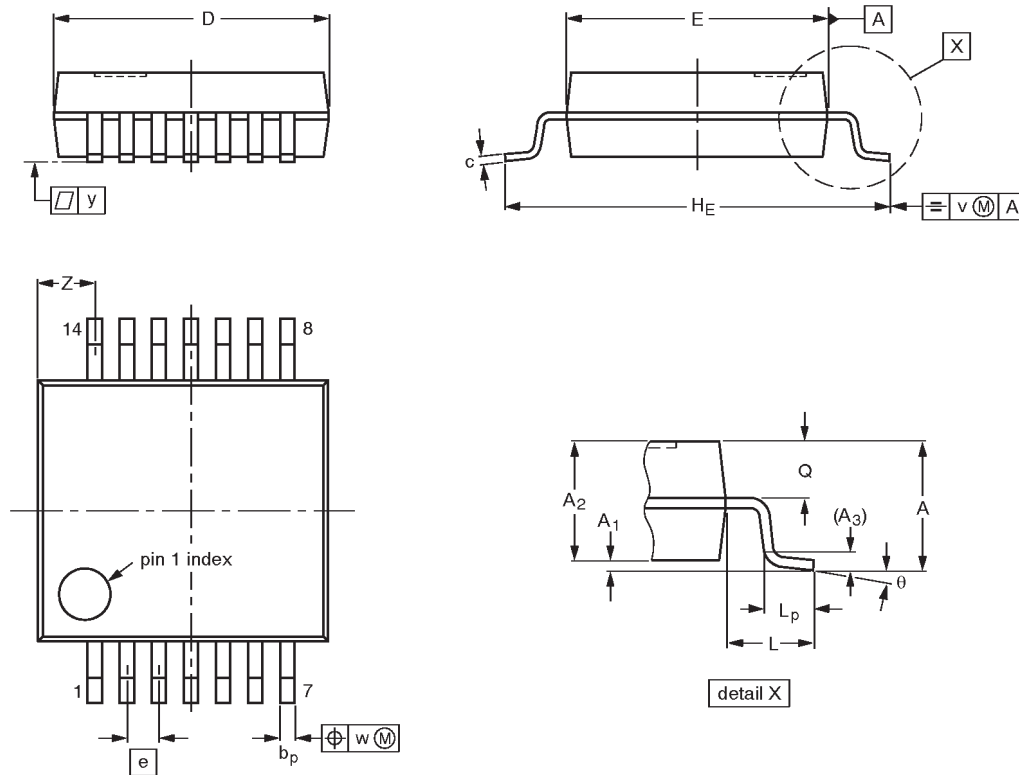


# Quad 2-input NOR gate

# 74ABT02

**SSOP14: plastic shrink small outline package; 14 leads; body width 5.3 mm**

**SOT337-1**



**DIMENSIONS (mm are the original dimensions)**

| UNIT | A max. | A <sub>1</sub> | A <sub>2</sub> | A <sub>3</sub> | b <sub>p</sub> | c            | D <sup>(1)</sup> | E <sup>(1)</sup> | e    | H <sub>E</sub> | L    | L <sub>p</sub> | Q          | v   | w    | y   | Z <sup>(1)</sup> | θ        |
|------|--------|----------------|----------------|----------------|----------------|--------------|------------------|------------------|------|----------------|------|----------------|------------|-----|------|-----|------------------|----------|
| mm   | 2.0    | 0.21<br>0.05   | 1.80<br>1.65   | 0.25           | 0.38<br>0.25   | 0.20<br>0.09 | 6.4<br>6.0       | 5.4<br>5.2       | 0.65 | 7.9<br>7.6     | 1.25 | 1.03<br>0.63   | 0.9<br>0.7 | 0.2 | 0.13 | 0.1 | 1.4<br>0.9       | 8°<br>0° |

**Note**

1. Plastic or metal protrusions of 0.25 mm maximum per side are not included.

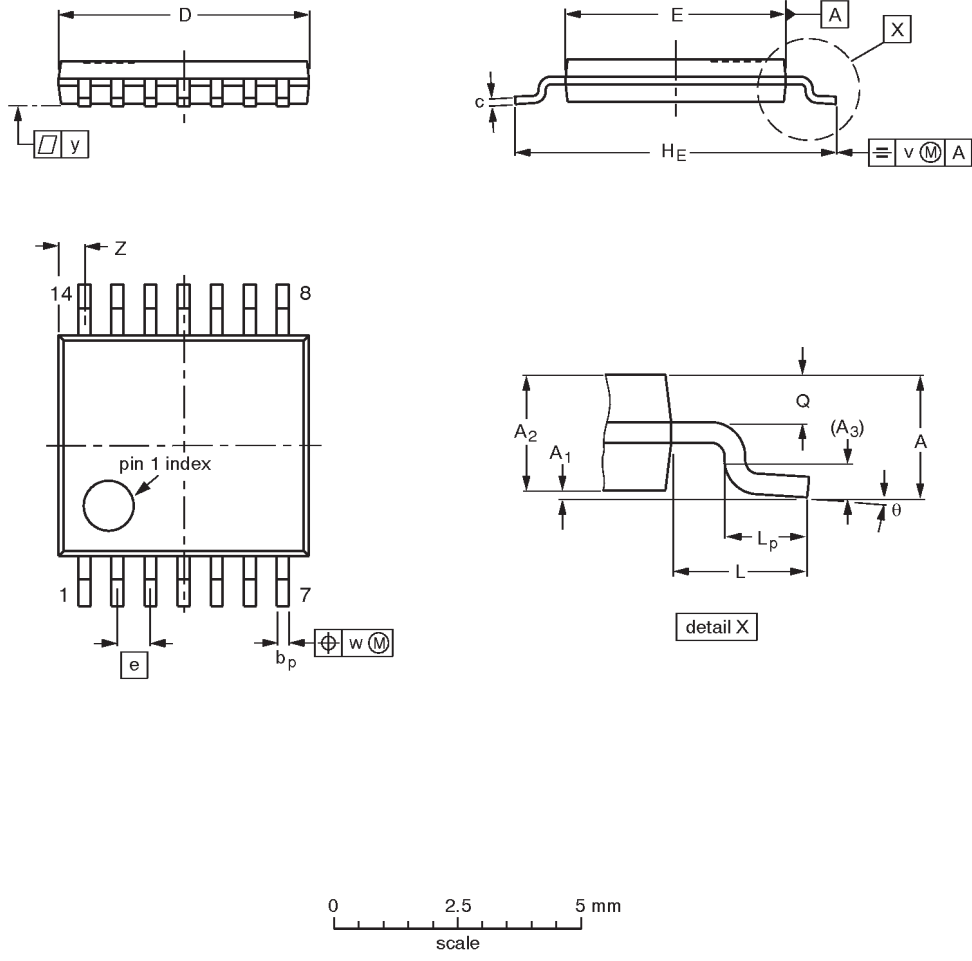
| OUTLINE VERSION | REFERENCES |          |      |  | EUROPEAN PROJECTION | ISSUE DATE                      |
|-----------------|------------|----------|------|--|---------------------|---------------------------------|
|                 | IEC        | JEDEC    | EIAJ |  |                     |                                 |
| SOT337-1        |            | MO-150AB |      |  |                     | <del>95-02-04</del><br>96-01-18 |

# Quad 2-input NOR gate

## 74ABT02

**TSSOP14:** plastic thin shrink small outline package; 14 leads; body width 4.4 mm

**SOT402-1**



**DIMENSIONS (mm are the original dimensions)**

| UNIT | A max. | A <sub>1</sub> | A <sub>2</sub> | A <sub>3</sub> | b <sub>p</sub> | c          | D <sup>(1)</sup> | E <sup>(2)</sup> | e    | H <sub>E</sub> | L   | L <sub>p</sub> | Q          | v   | w    | y   | z <sup>(1)</sup> | $\theta$ |
|------|--------|----------------|----------------|----------------|----------------|------------|------------------|------------------|------|----------------|-----|----------------|------------|-----|------|-----|------------------|----------|
| mm   | 1.10   | 0.15<br>0.05   | 0.95<br>0.80   | 0.25           | 0.30<br>0.19   | 0.2<br>0.1 | 5.1<br>4.9       | 4.5<br>4.3       | 0.65 | 6.6<br>6.2     | 1.0 | 0.75<br>0.50   | 0.4<br>0.3 | 0.2 | 0.13 | 0.1 | 0.72<br>0.38     | 8°<br>0° |

**Notes**

1. Plastic or metal protrusions of 0.15 mm maximum per side are not included.
2. Plastic interlead protrusions of 0.25 mm maximum per side are not included.

| OUTLINE VERSION | REFERENCES |        |      |  | EUROPEAN PROJECTION | ISSUE DATE             |
|-----------------|------------|--------|------|--|---------------------|------------------------|
|                 | IEC        | JEDEC  | EIAJ |  |                     |                        |
| SOT402-1        |            | MO-153 |      |  |                     | -94-07-12-<br>95-04-04 |

---

Quad 2-input NOR gate

74ABT02

---

**NOTES**

## Quad 2-input NOR gate

74ABT02

## DEFINITIONS

| Data Sheet Identification        | Product Status                | Definition   |
|----------------------------------|-------------------------------|--|
| <i>Objective Specification</i>   | <b>Formative or in Design</b> | This data sheet contains the design target or goal specifications for product development. Specifications may change in any manner without notice.   |
| <i>Preliminary Specification</i> | <b>Preproduction Product</b>  | This data sheet contains preliminary data, and supplementary data will be published at a later date. Philips Semiconductors reserves the right to make changes at any time without notice in order to improve design and supply the best possible product. |
| <i>Product Specification</i>     | <b>Full Production</b>        | This data sheet contains Final Specifications. Philips Semiconductors reserves the right to make changes at any time without notice, in order to improve design and supply the best possible product.  |

Philips Semiconductors and Philips Electronics North America Corporation reserve the right to make changes, without notice, in the products, including circuits, standard cells, and/or software, described or contained herein in order to improve design and/or performance. Philips Semiconductors assumes no responsibility or liability for the use of any of these products, conveys no license or title under any patent, copyright, or mask work right to these products, and makes no representations or warranties that these products are free from patent, copyright, or mask work right infringement, unless otherwise specified. Applications that are described herein for any of these products are for illustrative purposes only. Philips Semiconductors makes no representation or warranty that such applications will be suitable for the specified use without further testing or modification.

## LIFE SUPPORT APPLICATIONS

Philips Semiconductors and Philips Electronics North America Corporation Products are not designed for use in life support appliances, devices, or systems where malfunction of a Philips Semiconductors and Philips Electronics North America Corporation Product can reasonably be expected to result in a personal injury. Philips Semiconductors and Philips Electronics North America Corporation customers using or selling Philips Semiconductors and Philips Electronics North America Corporation Products for use in such applications do so at their own risk and agree to fully indemnify Philips Semiconductors and Philips Electronics North America Corporation for any damages resulting from such improper use or sale.

**Philips Semiconductors**  
**811 East Arques Avenue**  
**P.O. Box 3409**  
**Sunnyvale, California 94088-3409**  
**Telephone 800-234-7381**

Philips Semiconductors and Philips Electronics North America Corporation  
register eligible circuits under the Semiconductor Chip Protection Act.  
© Copyright Philips Electronics North America Corporation 1995  
All rights reserved. Printed in U.S.A.

(print code)

Date of release: July 1994

Document order number:

9397-750-04853