



Chipsmall Limited consists of a professional team with an average of over 10 year of expertise in the distribution of electronic components. Based in Hongkong, we have already established firm and mutual-benefit business relationships with customers from,Europe,America and south Asia,supplying obsolete and hard-to-find components to meet their specific needs.

With the principle of “Quality Parts,Customers Priority,Honest Operation,and Considerate Service”,our business mainly focus on the distribution of electronic components. Line cards we deal with include Microchip,ALPS,ROHM,Xilinx,Pulse,ON,Everlight and Freescale. Main products comprise IC,Modules,Potentiometer,IC Socket,Relay,Connector.Our parts cover such applications as commercial,industrial, and automotives areas.

We are looking forward to setting up business relationship with you and hope to provide you with the best service and solution. Let us make a better world for our industry!



Contact us

Tel: +86-755-8981 8866 Fax: +86-755-8427 6832

Email & Skype: info@chipsmall.com Web: www.chipsmall.com

Address: A1208, Overseas Decoration Building, #122 Zhenhua RD., Futian, Shenzhen, China





Die Datasheet, Logic Gate Device

Quad 2-Input NAND GATE

74AC00
74ACT00

Die Source:



27 mils x 31 mils x 14 mils

Backside : Silicon
Topside Metal: Aluminum

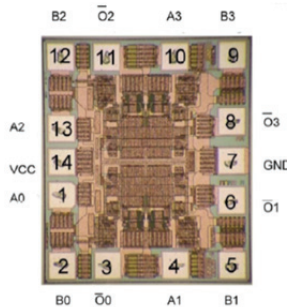
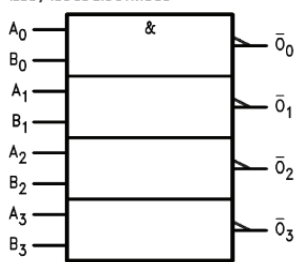
General Description:

The 74AC/ACT00 is a member of the Industries 74xxx series of Logic devices. The 74AC/ACT00 is a device description which contains (4) 2-Input NAND Gates.

ABSOLUTE MAXIMUM RATINGS

PARAMETER	SYMBOL	CONDITIONS	LIMIT	UNITS
Supply Voltage	V_{CC}		-0.5 to +7.0	V
DC Input Diode Current	I_{IK}	$V_I = -0.5V$	-20.0	mA
		$V_I = V_{CC} + 0.5V$	20.0	mA
DC Input Voltage	V_I		-0.5 to $V_{CC} + 0.5$	V
DC Output Diode Current	I_{OK}	$V_O = -0.5V$	-20.0	mA
		$V_O = V_{CC} + 0.5V$	20.0	mA
DC Output Voltage	V_O		-0.5 to $V_{CC} + 0.5$	V
DC Output Source or Sink Current	I_O		± 50.0	mA
DC VCC Current	I_{CC}		± 50.0	mA
DC GND Current	I_{DD}		± 50.0	mA
Storage Temp	T_{STG}		-65.0 to +150	$^{\circ}C$
Max Junction Temp	T_J		150.0	$^{\circ}C$

IEEE / IEC LOGIC SYMBOL



RECOMMENDED OPERATING CONDITIONS

PARAMETER	TECH	SYMBOL	LIMIT	UNITS
Supply Voltage	AC	V_{CC}	2.0 to 6.0	V
	ACT		4.5 to 5.5	V
Input Voltage		V_I	0 to V_{CC}	V
Output Voltage		V_O	0 to V_{CC}	V
Operating Temperature		T_A	-40 to +85	$^{\circ}C$
Minimum Input Edge Rate	AC	$\Delta V / \Delta t$	125	mV/ns
	ACT		125	mV/ns

DC ELECTRICAL CHARACTERISTICS

PARAMETER	TECH	SYMBOL	VCC (V)	CONDITIONS	Guaranteed Limits		UNITS	NOTE
					Min@25C	Min@85C		
Minimum HIGH level Input Voltage	AC	V_{IH}	3.0	$V_{OUT} = 0.1V$ or $V_{CC} - 0.1V$	2.10	2.10	V	
			4.5		3.15	3.15		
			5.5		3.85	3.85		
	ACT	V_{IH}	4.5	$V_{OUT} = 0.1V$ or $V_{CC} - 0.1V$	2.00	2.00	V	
			5.5		2.00	2.00		
Maximum LOW level Input Voltage	AC	V_{IL}	3.0	$V_{OUT} = 0.1V$ or $V_{CC} - 0.1V$	0.90	0.90	V	
			4.5		1.35	1.35		
			5.5		1.65	1.65		
	ACT	V_{IL}	4.5	$V_{OUT} = 0.1V$ or $V_{CC} - 0.1V$	0.80	0.80	V	
			5.5		0.80	0.80		
Minimum HIGH level Output Voltage	AC	V_{OH}	3.0	$I_{OUT} = -50\mu A$	2.90	2.90	V	
			4.5		4.40	4.40		
			5.5		5.40	5.40		
	AC	V_{OH}	3.0	$V_{IN} = V_{IL}$ or V_{IH} , $I_{OL} = -12mA$	2.56	2.46	V	
			4.5	$V_{IN} = V_{IL}$ or V_{IH} , $I_{OL} = -12mA$	3.86	3.76		
			5.5	$V_{IN} = V_{IL}$ or V_{IH} , $I_{OL} = -24mA$	4.86	4.76		
	ACT	V_{OH}	4.5	$I_{OUT} = -50\mu A$	4.40	4.40	V	
			5.5		5.40	5.40		
	ACT	V_{OH}	4.5	$V_{IN} = V_{IL}$ or V_{IH} , $I_{OL} = -24mA$	3.86	3.76	V	
			5.5	$V_{IN} = V_{IL}$ or V_{IH} , $I_{OL} = -24mA$	4.86	4.76		



Die Datasheet, Logic Gate Device

Quad 2-Input NAND GATE

74AC00
74ACT00

DC ELECTRICAL CHARACTERISTICS - CONT'D

PARAMETER	TECH	SYMBOL	VCC (V)	CONDITIONS	Guarenteed Limits		UNITS	NOTE
					Min@25C	Min@85C		
Maximum LOW level Output Voltage	AC	V _{OL}	3.0	I _{OUT} = -50uA	0.1	0.1	V	
			4.5		0.1	0.1		
			5.5		0.1	0.1		
	AC	V _{OL}	3.0	V _{IN} = V _{IL} or V _{IH} , I _{OL} = -12mA	0.36	0.44	V	
			4.5	V _{IN} = V _{IL} or V _{IH} , I _{OL} = -24mA	0.36	0.44		
			5.5	V _{IN} = V _{IL} or V _{IH} , I _{OL} = -24mA	0.36	0.44		
	ACT	V _{OL}	4.5	I _{OUT} = -50uA	0.1	0.1	V	
			5.5		0.1	0.1		
ACT	V _{OL}	4.5	V _{IN} = V _{IL} or V _{IH} , I _{OL} = -24mA	0.36	0.44	V		
		5.5	V _{IN} = V _{IL} or V _{IH} , I _{OL} = -24mA	0.36	0.44			1
Maximum Input Leakage Current	AC	I _{IN}	5.5	V _I = V _{CC} or GND	±0.1	±1.0	uA	2
	ACT		5.5		±0.1	±1.0		
Minimum Dynamic Output Current	AC	I _{OLD}	5.5	V _{OLD} = 1.65V Max	--	75	mA	
	ACT		5.5		--	75		
	AC	I _{OHD}	5.5	V _{OHD} = 3.85V Min	--	-75	mA	
	ACT		5.5		--	-75		
Maximum Quiescent Supply Current	AC	I _{CC}	5.5	V _{IN} = V _{CC} or GND	2	20	uA	2
	ACT		5.5		2	20		

- Note(s):
1. All Outputs Loaded; thresholds on input associated with output under test
 2. I_{IN} and I_{CC} @ 3.0V are guaranteed to be less than or equal to the respective limit @ 5.5V VCC

AC ELECTRICAL CHARACTERISTICS

PARAMETER	TECH	SYMBOL	VCC (V)	CONDITIONS	Guarenteed Limits		Guarenteed Limits		UNITS
					Min@25C	Max@25C	Min@85C	Max@85C	
Propagation Delay	AC	t _{PLH}	5.0		1.5	9.0	1.0	9.5	ns
	ACT		5.0		1.5	9.0	1.0	9.5	ns
	AC	t _{PHL}	5.0		1.5	7.0	1.0	8.0	ns
	ACT		5.0		1.5	7.0	1.0	8.0	ns