



Chipsmall Limited consists of a professional team with an average of over 10 year of expertise in the distribution of electronic components. Based in Hongkong, we have already established firm and mutual-benefit business relationships with customers from,Europe,America and south Asia,supplying obsolete and hard-to-find components to meet their specific needs.

With the principle of “Quality Parts,Customers Priority,Honest Operation,and Considerate Service”,our business mainly focus on the distribution of electronic components. Line cards we deal with include Microchip,ALPS,ROHM,Xilinx,Pulse,ON,Everlight and Freescale. Main products comprise IC,Modules,Potentiometer,IC Socket,Relay,Connector.Our parts cover such applications as commercial,industrial, and automotives areas.

We are looking forward to setting up business relationship with you and hope to provide you with the best service and solution. Let us make a better world for our industry!



Contact us

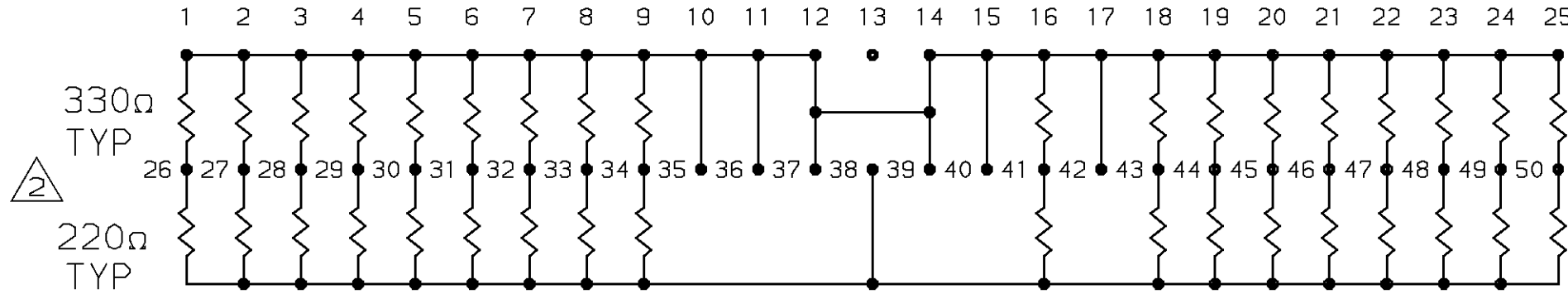
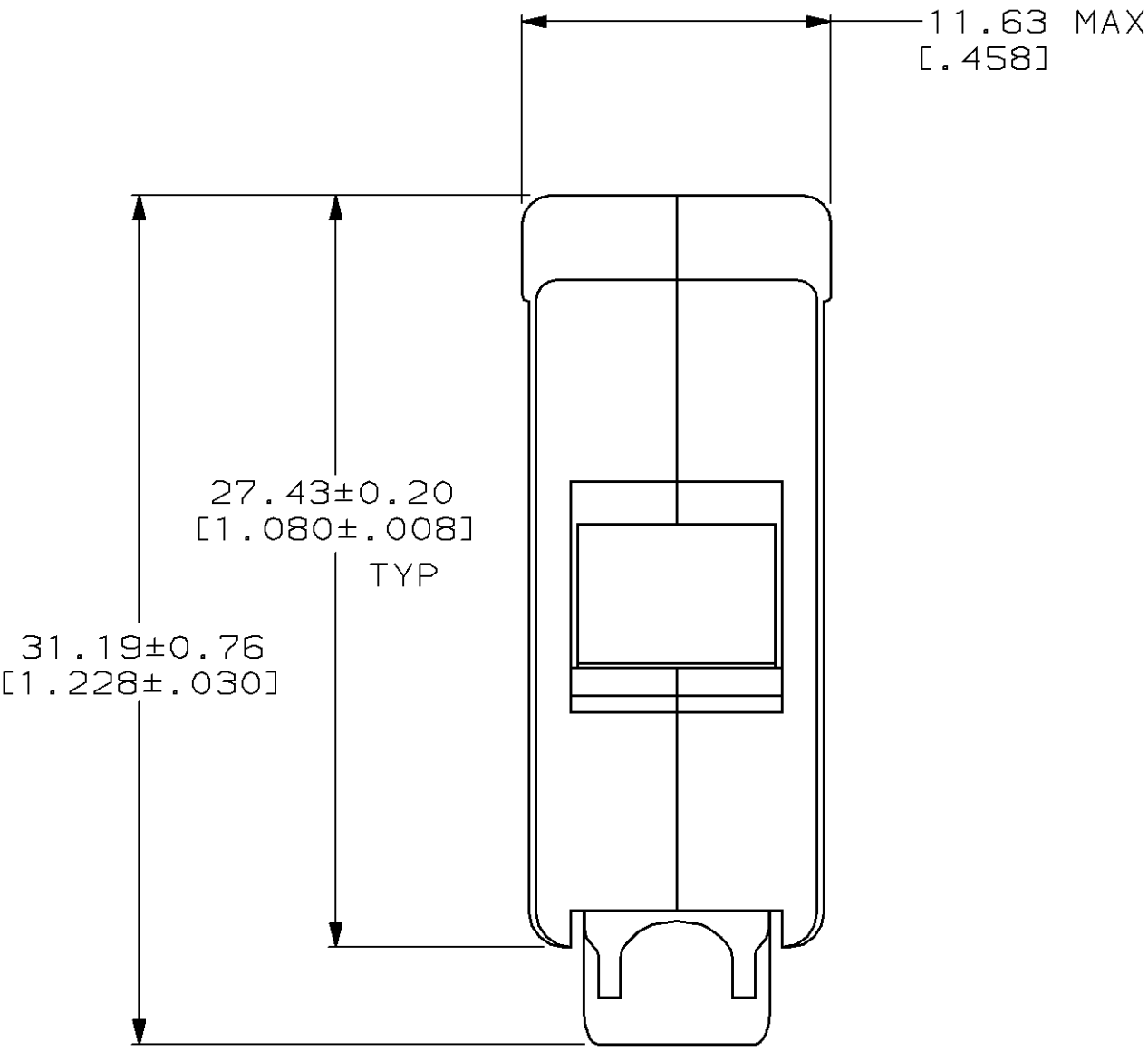
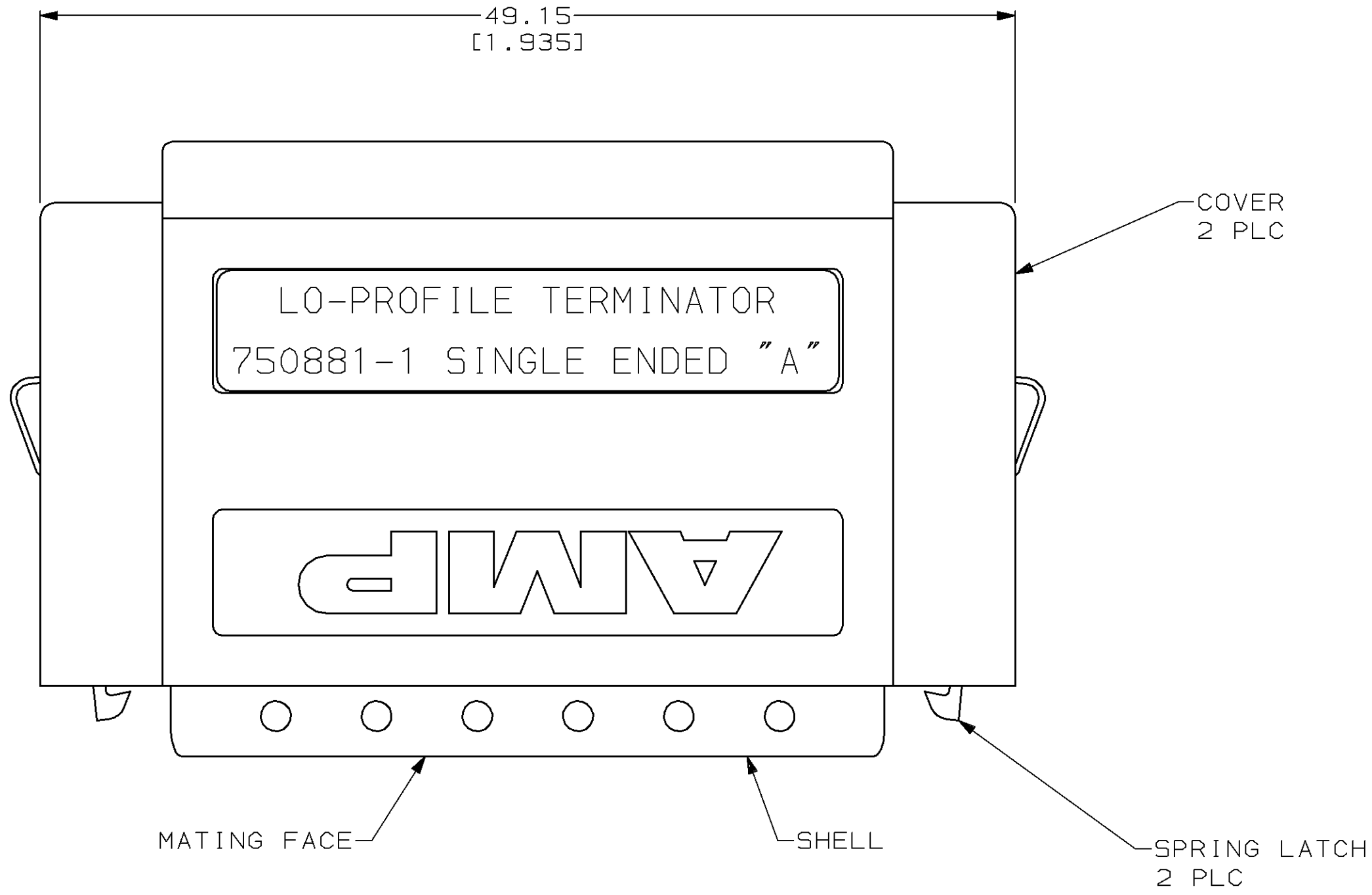
Tel: +86-755-8981 8866 Fax: +86-755-8427 6832

Email & Skype: info@chipsmall.com Web: www.chipsmall.com

Address: A1208, Overseas Decoration Building, #122 Zhenhua RD., Futian, Shenzhen, China

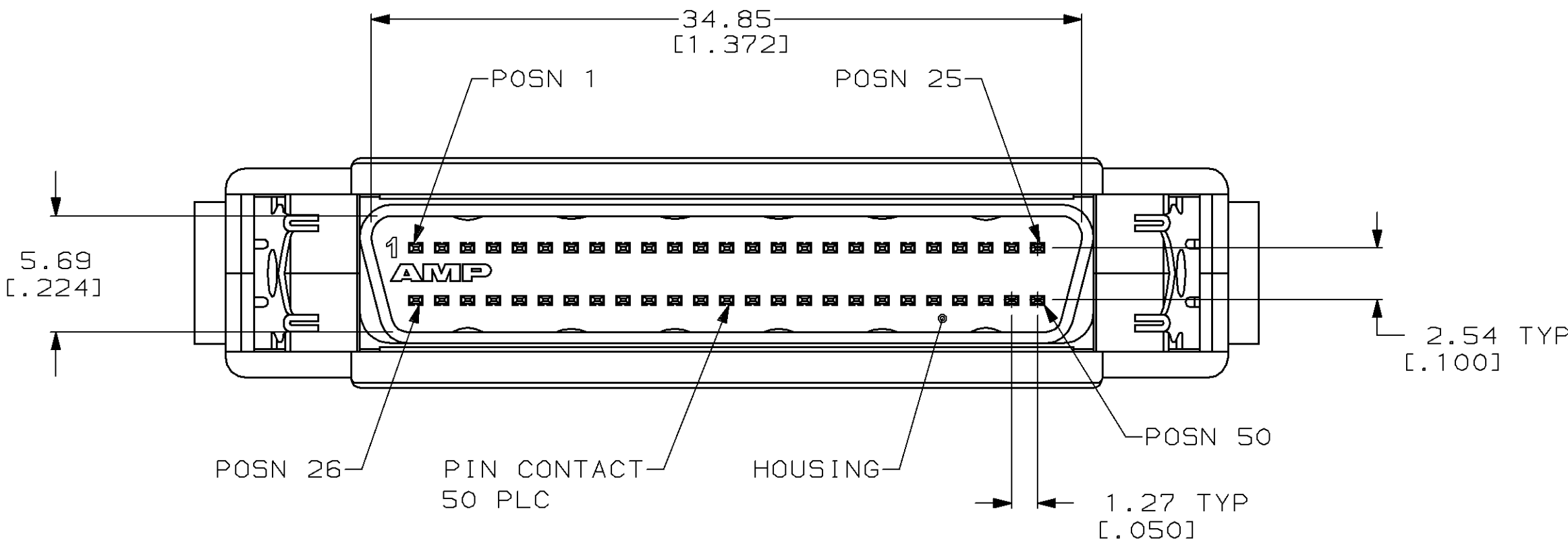


MOD	LOC	DIST	P	F	ZONE	LTR	REVISIONS		
							DESCRIPTION	DATE	APPD
5	BD	62				0	RLSE WAS 91-4163-045-01	8-91	-
						A	REV NPR 3794	10/28/91	PR
						B	REVISED ECN B06418	07/28/92	PR
						C	REV PER EC 0020-601-93	10/27/93	PR



ELECTRICAL SCHEMATIC

- 1 SHELL: CARBON STEEL; PIN CONTACT: PHOSPHOR BRONZE; HOUSING: POLYESTER, BLACK; RESISTOR NETWORK: THICK FILM RESISTOR COMPOSITION ON ALUMINA SUBSTRATE. SPRING LATCH: STAINLESS STEEL; COVER: ABS, GRAY, UL 94V-0 RATED.
- 2 RESISTOR TOLERANCE: ±5%.
- 3 5.08μm[.000200] MIN TIN OR TIN-LEAD OVER 1.27μm[.000050] MIN COPPER.
- 4 0.76μm[.000030] MIN GOLD FOR A LENGTH OF 3.35[.132] MIN FROM MATING END OVER 1.27μm[.000050] MIN NICKEL.



					750881-1	
					PART NO	
DO NOT SCALE PRINT. UNLESS SPECIFIED DIMENSIONS IN mm [INCHES] TOLERANCES ON : 2 PLC DEC ± 0.25[.010] 3 PLC DEC ± - ANGLES ± - MATERIAL <div>1</div>		DR 8-4-91 J McCLINTON		<div>AMP</div> AMP Incorporated Harrisburg, PA 17105-3608		
		CHK 8-5-91 R.STONE				
		APPD 8-7-91 P.RUELVIS		NAME PLUG ASSEMBLY, 50 POSITION, .050 SERIES AMPLIMITE™, TERMINATOR		
		APPD 8-7-91 C.RHDE				
		PRODUCT SPEC -				
FINISH SHELL: <div>3</div> CONTACTS: <div>4</div>		APPLICATION SPEC -		SIZE <div>D</div>	CAGE CODE 00779	DRAWING NO 750881
WEIGHT -		SCALE 4:1		SHEET 1 OF 1		