



Chipsmall Limited consists of a professional team with an average of over 10 year of expertise in the distribution of electronic components. Based in Hongkong, we have already established firm and mutual-benefit business relationships with customers from,Europe,America and south Asia,supplying obsolete and hard-to-find components to meet their specific needs.

With the principle of “Quality Parts,Customers Priority,Honest Operation,and Considerate Service”,our business mainly focus on the distribution of electronic components. Line cards we deal with include Microchip,ALPS,ROHM,Xilinx,Pulse,ON,Everlight and Freescale. Main products comprise IC,Modules,Potentiometer,IC Socket,Relay,Connector.Our parts cover such applications as commercial,industrial, and automotives areas.

We are looking forward to setting up business relationship with you and hope to provide you with the best service and solution. Let us make a better world for our industry!



## Contact us

Tel: +86-755-8981 8866 Fax: +86-755-8427 6832

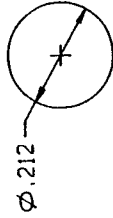
Email & Skype: info@chipsmall.com Web: www.chipsmall.com

Address: A1208, Overseas Decoration Building, #122 Zhenhua RD., Futian, Shenzhen, China



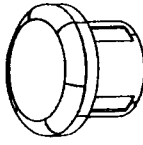
REV	ECR NO./DESCRIPTION	DATE
A	11781 NEW RELEASE	06/16/95
B	12010 PAP SALES DRAWING	08/17/95

MOUNTING HOLE PATTERN  
SCALE 4 : 1

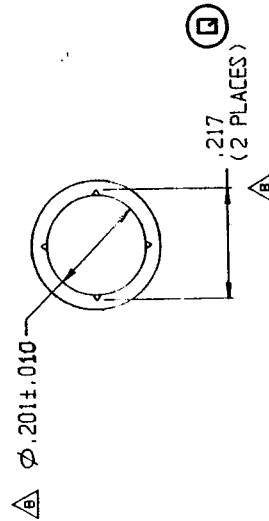
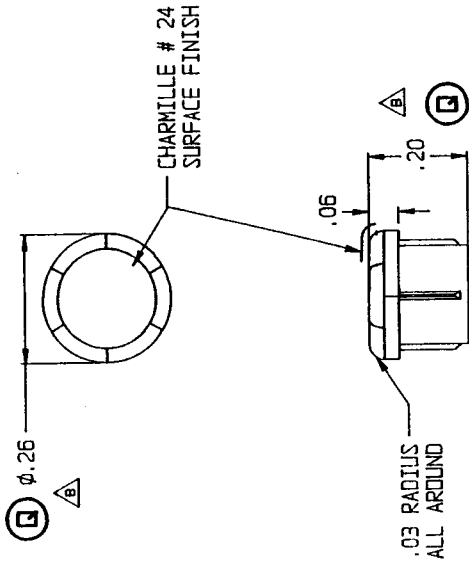


NOTES:

- LED TYPE TBD.
- MATERIAL: CLEAR POLYCARBONATE 94-V2.



ISOMETRIC VIEW  
FOR REFERENCE ONLY  
SCALE 4 : 1



THIS Dwg IS THE PROPERTY  
OF INDUSTRIAL DEVICES, INC.  
AND IS PROPRIETARY IN  
GENERAL AND IN DETAIL.  
IT SHALL NOT BE COPIED  
OR ITS CONTENTS REVEALED  
TO OUTSIDE PARTIES WITH-  
OUT THE WRITTEN CONSENT  
OF INDUSTRIAL DEVICES, INC.

DO NOT SCALE

FOR INSPECTION USE ONLY  
SPEC DOCUMENTATION REQ. (X R CHARTS)

OCT 10 2000

DEST. S

PART NO.	MODEL NO. 7511A1B	TITLE	LIGHTPIPE FOR UNGERMAN-BASS
MATERIAL	SEE NOTES	INDUSTRIAL DEVICES, INC. HACKENSACK, NEW JERSEY	
FINISH:		DRAWN M. VALZANIA	SCALE: 4 : 1
TOLERANCE UNLESS OTHERWISE SPECIFIED:		CHECKED <i>LLI</i> 8-23-95	REV B
FRACTION	$\pm 1/64$	ENG. APPRY <i>AS</i>	B12777
DIMENSIONS	$\pm .001$ (0.25)		
ANGLE	$\pm 1$ DEG.		