



Chipsmall Limited consists of a professional team with an average of over 10 year of expertise in the distribution of electronic components. Based in Hongkong, we have already established firm and mutual-benefit business relationships with customers from,Europe,America and south Asia,supplying obsolete and hard-to-find components to meet their specific needs.

With the principle of “Quality Parts,Customers Priority,Honest Operation,and Considerate Service”,our business mainly focus on the distribution of electronic components. Line cards we deal with include Microchip,ALPS,ROHM,Xilinx,Pulse,ON,Everlight and Freescale. Main products comprise IC,Modules,Potentiometer,IC Socket,Relay,Connector.Our parts cover such applications as commercial,industrial, and automotives areas.

We are looking forward to setting up business relationship with you and hope to provide you with the best service and solution. Let us make a better world for our industry!



Contact us

Tel: +86-755-8981 8866 Fax: +86-755-8427 6832

Email & Skype: info@chipsmall.com Web: www.chipsmall.com

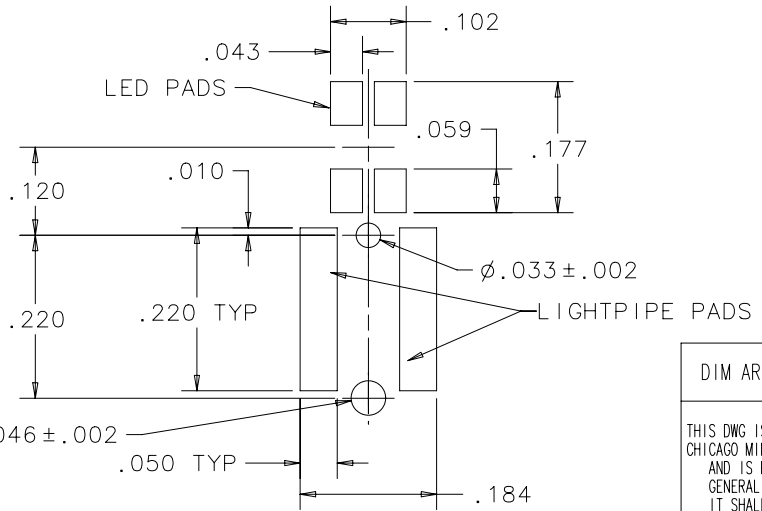
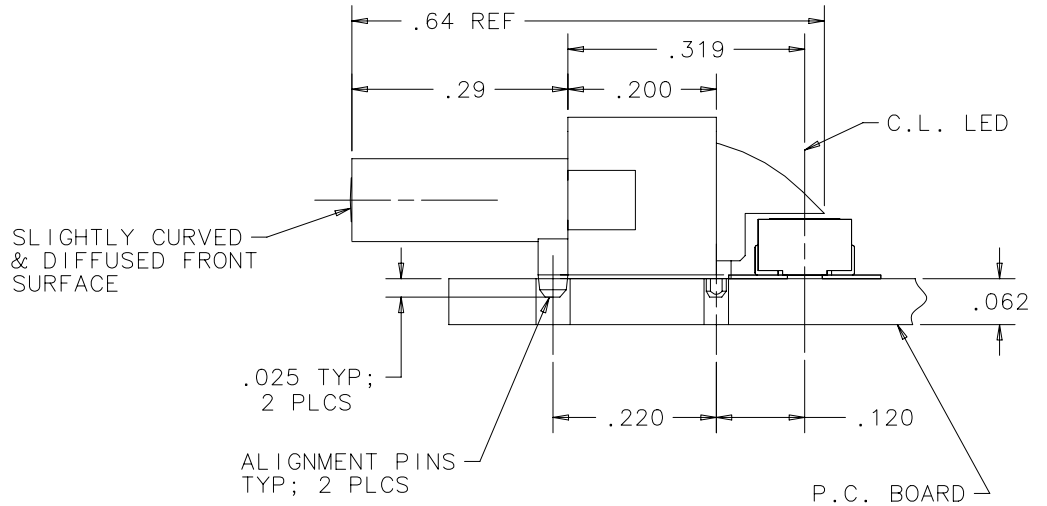
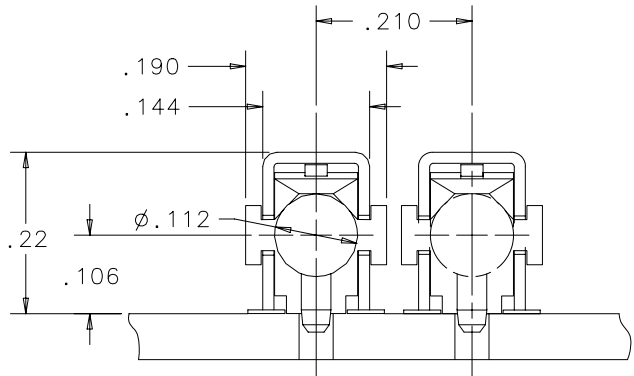
Address: A1208, Overseas Decoration Building, #122 Zhenhua RD., Futian, Shenzhen, China



NOTES:

1. SMT LIGHTPIPE COMPONENT DESIGNED TO WITHSTAND STANDARD IR REFLOW SOLDERING PROFILE. **SEE SHEET THREE**
2. LED LIGHTSOURCE TO BE A SEPERATE COMPONENT.
3. LIGHTSOURCE: SMT LED (CML #CMD67-21/22 SERIES).
4. SMT LIGHTPIPE IS UL94 HB COMPLIANT WITH A POLYMER MASS OF 0.112 GRAMS.

REVISIONS			
REV	ECR NO	DESCRIPTION	DATE



CML MODEL NO.	PACKAGING OPTION
7520A10	100-PCS PER BAG
7520A10-TR	SUPPLIED ON TAPE & REEL 700-PCS PER REEL (SEE SHEET 2 OF 2)

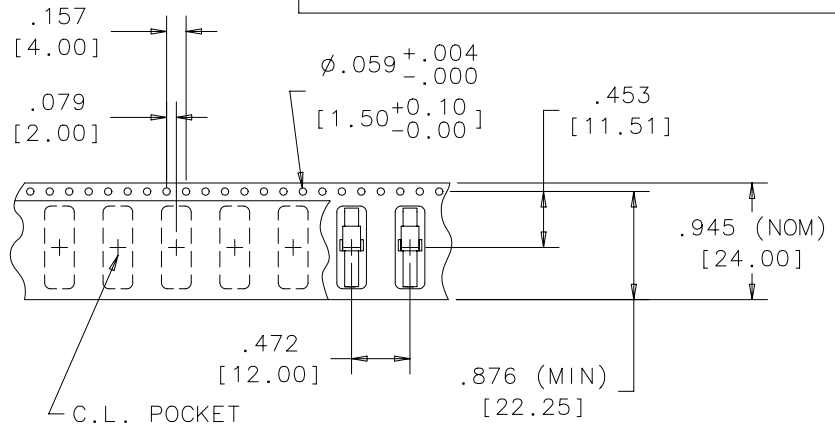
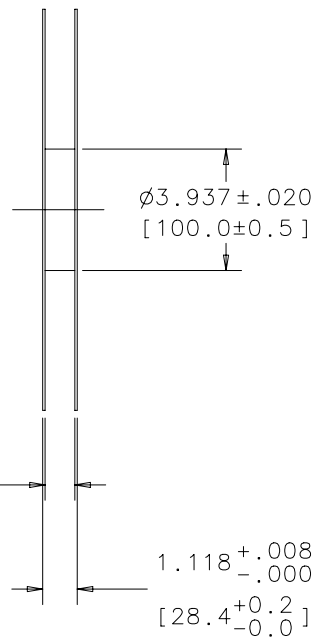
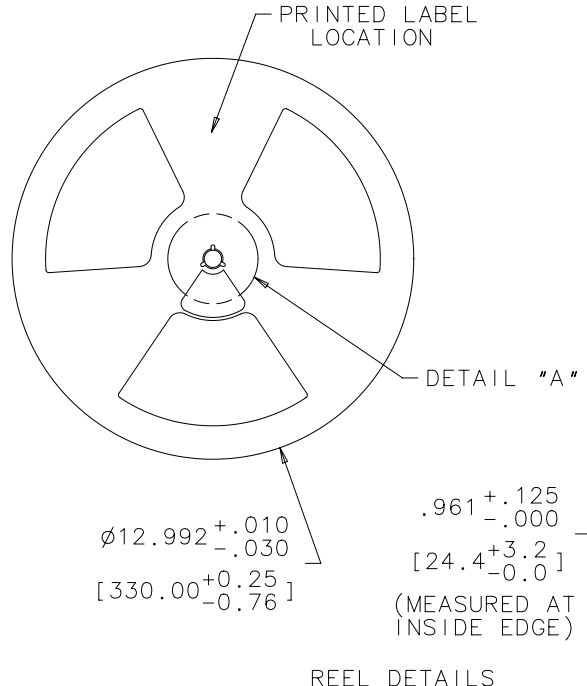
Patent Pending

DIM ARE IN INCHES		<input type="checkbox"/> FOR INSPECTION USE ONLY <input checked="" type="checkbox"/> SPC DOCUMENTATION REQ. (X R CHARTS)	
THIS DWG IS THE PROPERTY OF CHICAGO MINIATURE LAMP, INC AND IS PROPRIETARY IN GENERAL AND IN DETAIL. IT SHALL NOT BE COPIED OR ITS CONTENTS REVEALED TO OUTSIDE PARTIES WITHOUT THE WRITTEN CONSENT OF CHICAGO MINIATURE LAMP, INC.	DRAWN BY M.C.	DATE 6-4-03	PART NO MODEL NO MOLD NO MATERIAL FINISH
UNLESS OTHERWISE SPECIFIED TOLERANCES ON: .XX +/- .02 .XXX +/- .010 ANGLE +/- 1 DEG.	CHECKED BY DATE ENG. APPRV. DATE	SEE CHART	TITLE SMT LIGHTPIPE

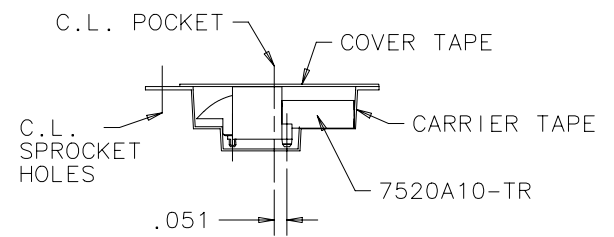
CHICAGO MINIATURE LAMP, INC. 147 CENTRAL AVE. HACKENSACK, NJ 07601			
TITLE SMT LIGHTPIPE			
DIST. S	DWG NO	B17792	REV
SCALE	6:1	SHEET	1 OF 2

PRELIMINARY SOLDER PAD LAYOUT (BICOLOR LED PADS SHOWN)
SDRC FILE NAME: 7520A10.mf1

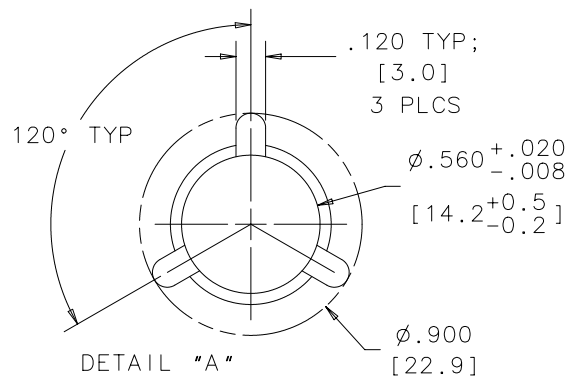
REVISIONS	
SEE SHEET 1	



CARRIER TAPE DETAILS



7520A10-TR CONFIGURATION IN CARRIER TAPE



SDRC FILE NAME: 7520A10.mf1

DIM ARE IN INCHES	<input checked="" type="checkbox"/> FOR INSPECTION USE ONLY <input checked="" type="checkbox"/> SPC DOCUMENTATION REQ. (X R CHARTS)		
THIS DWG IS THE PROPERTY OF CHICAGO MINIATURE LAMP, INC AND IS PROPRIETARY IN GENERAL AND IN DETAIL. IT SHALL NOT BE COPIED OR ITS CONTENTS REVEALED TO OUTSIDE PARTIES WITHOUT THE WRITTEN CONSENT OF CHICAGO MINIATURE LAMP, INC.	DRAWN BY M.C. 8-25-03	DATE 8-25-03	PART NO
	CHECKED BY	DATE	MODEL NO SEE CHART (SHEET 1)
	ENG. APPRV.	DATE	MOLD NO
	UNLESS OTHERWISE SPECIFIED TOLERANCES ON:		MATERIAL
	.XX +/- .02	FINISH	
	.XXX +/- .010		
	ANGLE +/- 1 DEG.		
CHICAGO MINIATURE LAMP, INC. 147 CENTRAL AVE. HACKENSACK, NJ 07601			TITLE SMT LIGHTPIPE
DIST. S	DWG NO B17792	REV	
SCALE 1:4	SHEET 2 OF 2		

**Chicago Miniature Lamp
P/N 7520A10 series**

SMD Light Pipe solder profile

Melting point for 63/37 Tin-Lead solder paste: 183 Degrees C.

Maximum Reflow Temperature for 7520A10 is 221 Degrees C.

