



Chipsmall Limited consists of a professional team with an average of over 10 year of expertise in the distribution of electronic components. Based in Hongkong, we have already established firm and mutual-benefit business relationships with customers from,Europe,America and south Asia,supplying obsolete and hard-to-find components to meet their specific needs.

With the principle of “Quality Parts,Customers Priority,Honest Operation,and Considerate Service”,our business mainly focus on the distribution of electronic components. Line cards we deal with include Microchip,ALPS,ROHM,Xilinx,Pulse,ON,Everlight and Freescale. Main products comprise IC,Modules,Potentiometer,IC Socket,Relay,Connector.Our parts cover such applications as commercial,industrial, and automotives areas.

We are looking forward to setting up business relationship with you and hope to provide you with the best service and solution. Let us make a better world for our industry!



Contact us

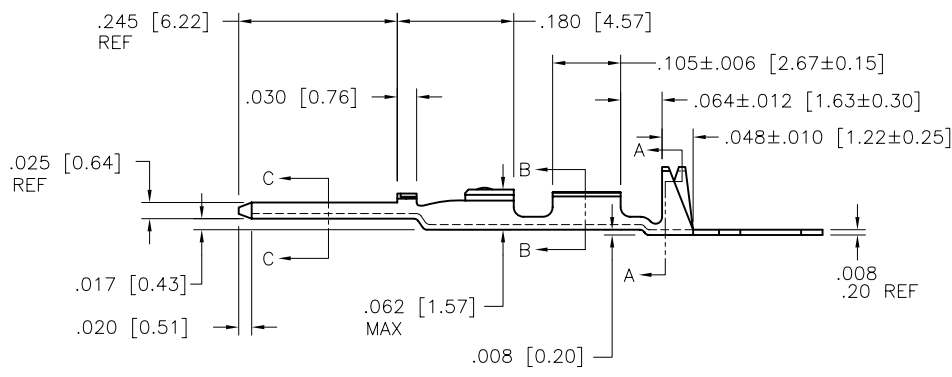
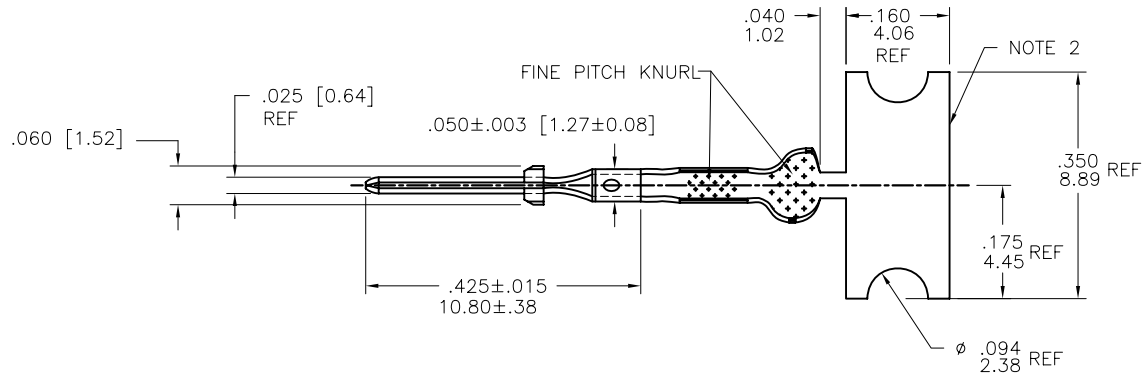
Tel: +86-755-8981 8866 Fax: +86-755-8427 6832

Email & Skype: info@chipsmall.com Web: www.chipsmall.com

Address: A1208, Overseas Decoration Building, #122 Zhenhua RD., Futian, Shenzhen, China

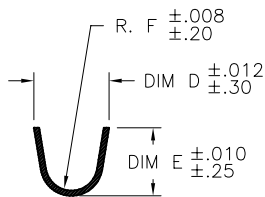


PRODUCT NUMBER
SEE SHEET 2

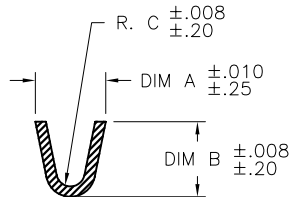


mat'l. code 3/4 HD BRASS CDA NO. 260				surface <input checked="" type="checkbox"/> tolerance		projection		product family PV TERMINAL	
ltr ecn no dr date				tolerances unless otherwise specified				title CTW MALE PIN	
D	V41703	SAR	1994-11-30	angles	$\frac{XX}{100} \pm 0.01 / X \pm 3$	INCH/MM		dwg no 75653	
E	V80946	LSS	1998-06-03		$\frac{XXX}{1000} \pm 0.005 / XX \pm 13$	scale 4/1			
F	V04-0056	VS	2004-02-17	$0^\circ \pm 2'$	$\frac{XXXX}{10000} \pm 0.0020 / XXX \pm 0.051$			sheet 1 of 3 size A4	
G	V05-0467	HTB	2005-05-23	dr	S ROYER	1994-11-30		FCI	
H	V06-0623	HTB	2006-06-28	ENGR	T.HANNA	1994-11-30			
J	V07-0218	HTB	2007-03-16	chr	T.HANNA	1994-11-30		type CUSTOMER Drawing	
K	V08-0440	HTB	2008-10-09	appd	T.HANNA	1994-11-30			
sheet index	revision	K	K	K					
	sheet	1	2	3					

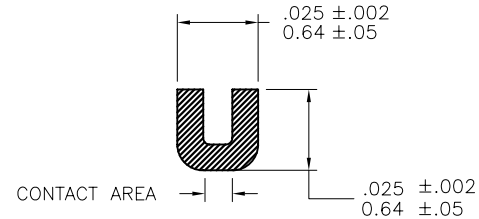
PRODUCT NO. AS REELED FOR APPLICATION MACHINES NOTE 5		WIRE AWG	WIRE BARREL			INSULATION BARREL			
RIGHT TO LEFT FEED	LEFT TO RIGHT FEED		A	B	C	D	E	F	
75653-001	75653-004	28-32	.054/1.37	.058/1.47	.011/0.28	.115/2.92	.105/2.67	.040/1.02	OBSOLETE
75653-001LF	75653-004LF	28-32	.054/1.37	.058/1.47	.011/0.28	.115/2.92	.105/2.67	.040/1.02	NOTE 7
75653-002	75653-005	22-26	.070/1.78	.065/1.65	.017/0.43	.139/3.53	.120/3.05	.050/1.27	OBSOLETE
75653-002LF	75653-005LF	22-26	.070/1.78	.065/1.65	.017/0.43	.139/3.53	.120/3.05	.050/1.27	NOTE 7
75653-003	75653-006	18-20	.104/2.64	.104/2.64	.021/0.53	.139/3.53	.120/3.05	.050/1.27	OBSOLETE
75653-003LF	75653-006LF	18-20	.104/2.64	.104/2.64	.021/0.53	.139/3.53	.120/3.05	.050/1.27	NOTE 7



SECTION A-A
SCALE 2:1



SECTION B-B
SCALE 2:1



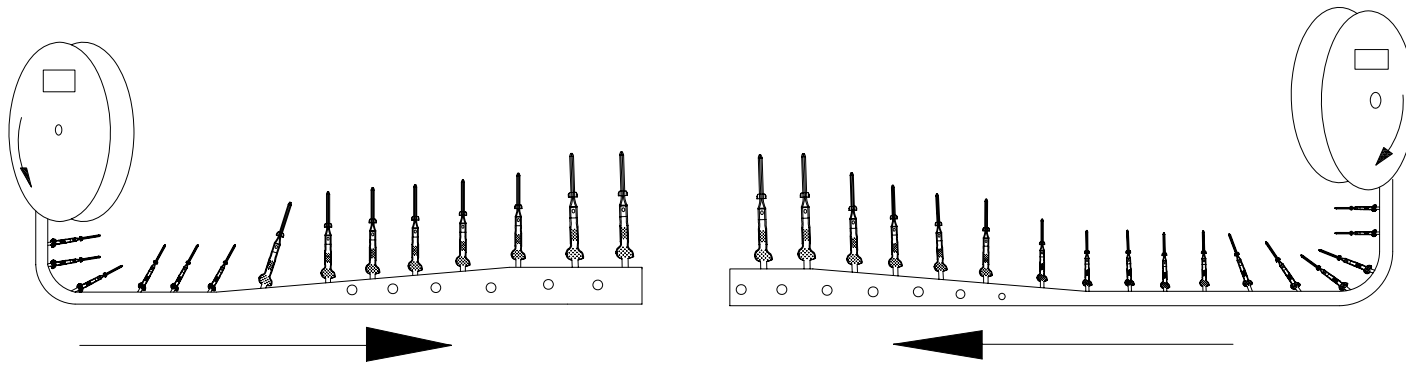
SECTION C-C
SCALE 5:1

NOTES:

1. PLATING: 100 μ "/2.54 μ SnPb MINIMUM PRE-PLATED (OBSOLETE)
P/N WITH LF SUFFIX: 100 μ "/2.54 μ Sn MINIMUM PRE-PLATED
2. FOR MANUFACTURING PURPOSES ONLY.
3. PART MAY BE USED WITH MINI-LATCH HSG.
4. APPLICABLE SPECIFICATIONS:
A. BUS-12-098: PRODUCT SPECIFICATION
B. TA-211: CRIMP SPECIFICATION
5. PART NUMBERS WITH AN LF SUFFIX MEET EUROPEAN UNION DIRECTIVES AND OTHER COUNTRY REGULATIONS AS DESCRIBED IN GS-22-008.
6. THIS PRODUCT IS NOT INTENDED TO BE EXPOSED TO MANUFACTURING SOLDER PROCESSES.
7. THIS PRODUCT HAS 100% TIN PLATING IN THE INTERFACE AND HAS NOT BEEN TESTED FOR WHISKER GROWTH IN ALL INTERCONNECT ENVIRONMENTS.
8. PACKAGE QUANTITY: 8000 PER REEL

mat'l. code 3/4 HD BRASS CDA NO. 260		surface <input checked="" type="checkbox"/> tolerance		projection		product family PV TERMINAL	
ltr	ecn no	dr	date	tolerances unless otherwise specified		title CTW MALE PIN	
K				angles	INCH/MM		
				0° ±2'	scale 4/1		
		dr	S ROYER	1994-11-30			
		enr	T.HANNA	1994-11-30			
		chr	T.HANNA	1994-11-30			
		appd	T.HANNA	1994-11-30			
sheet index	revision sheet					dwg no 75653	
						sheet 2 of 3 size A4	
						type CUSTOMER Drawing	

PRODUCT NUMBER
SEE SHEET 2



Unreeling Direction
Left to Right Into
Applicator

Unreeling Direction
Right to Left Into
Applicator

mat'l. code 3/4 HD BRASS CDA NO. 260		surface <input checked="" type="checkbox"/>		tolerance		projection		product family PV TERMINAL	
ltr	ecm no	dr	date	tolerances unless otherwise specified				title CTW MALE PIN	
k				angles	fr	INCH/MM			
					top	scale 1:1		dwg no	
				0° ±2'	fil			sheet 3 of 3	
					pl			size	
				dr	H. SUNDY	2004-02-17		75653	
				engr	H. SUNDY	2004-02-17		A4	
				chr	H. SUNDY	2004-02-17		type	
				appd	H. SUNDY	2004-02-17		CUSTOMER Drawing	
sheet index	revision sheet								