



Chipsmall Limited consists of a professional team with an average of over 10 year of expertise in the distribution of electronic components. Based in Hongkong, we have already established firm and mutual-benefit business relationships with customers from,Europe,America and south Asia,supplying obsolete and hard-to-find components to meet their specific needs.

With the principle of “Quality Parts,Customers Priority,Honest Operation,and Considerate Service”,our business mainly focus on the distribution of electronic components. Line cards we deal with include Microchip,ALPS,ROHM,Xilinx,Pulse,ON,Everlight and Freescale. Main products comprise IC,Modules,Potentiometer,IC Socket,Relay,Connector.Our parts cover such applications as commercial,industrial, and automotives areas.

We are looking forward to setting up business relationship with you and hope to provide you with the best service and solution. Let us make a better world for our industry!



## Contact us

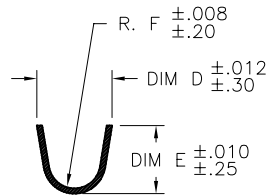
Tel: +86-755-8981 8866 Fax: +86-755-8427 6832

Email & Skype: info@chipsmall.com Web: www.chipsmall.com

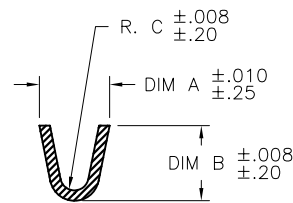
Address: A1208, Overseas Decoration Building, #122 Zhenhua RD., Futian, Shenzhen, China



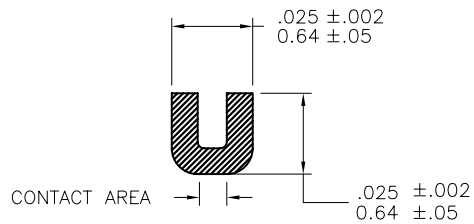
PRODUCT NUMBER  
SEE SHEET 2



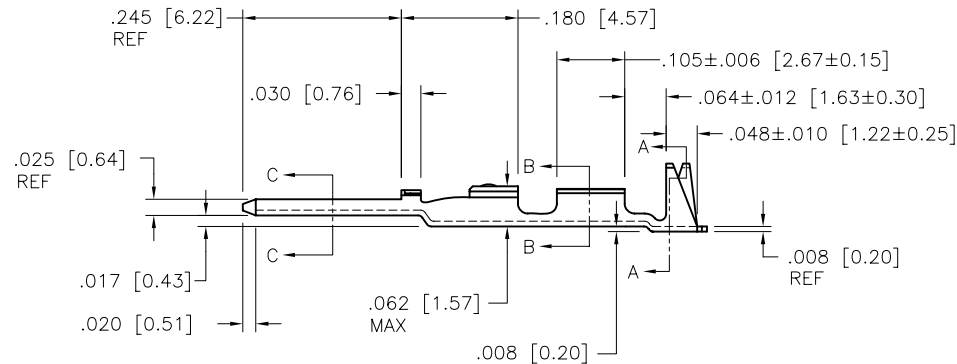
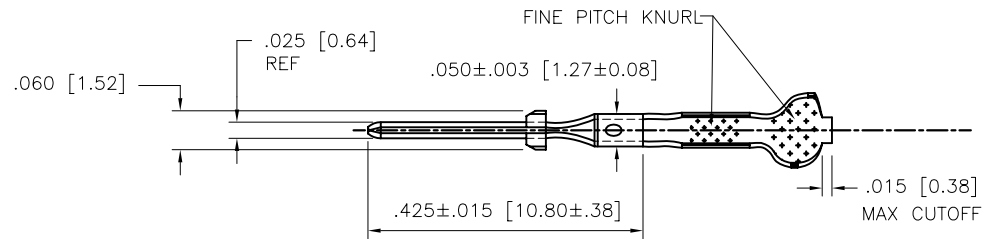
SECTION A-A  
SCALE 2:1



SECTION B-B  
SCALE 2:1



SECTION C-C  
SCALE 5:1



mat'l. code 3/4 HD BRASS CDA NO. 260				surface <input checked="" type="checkbox"/> tolerance		projection		product family PV TERMINAL	
ltr ecn no dr date				tolerances unless otherwise specified				title CTW MALE PIN LOOSE PIECE	
D	V41704	SAR	1994-11-30	angles	fr to line	.XX ±.01/XX±3 .XXX ±.005/XX±13		scale 4/1	
E	V05-0467	HTB	2005-05-23	0° ±2'		.XXXX ±.0020/XXX±.051		sheet 1 of 2 size	
F	V05-0530	HTB	2005-05-31	dr		S. ROYER	1994-11-30	dwg no	
G	V06-0623	HTB	2006-06-28	enr		T. HANNA	1994-11-30	75654	
H	V07-0218	HTB	2007-03-16	chr		T. HANNA	1994-11-30	A4	
				appd		T. HANNA	1994-11-30	type CUSTOMER Drawing	
sheet index	revision sheet	H	H						
		1	2						

PRODUCT NUMBER NOTE 4	WIRE AWG	WIRE BARREL			INSULATION BARREL		
		A	B	C	D	E	F
75654-001	28-32	.054/1.37	.058/1.47	.011/0.28	.115/2.92	.105/2.67	.040/1.02
75654-001LF	28-32	.054/1.37	.058/1.47	.011/0.28	.115/2.92	.105/2.67	.040/1.02
75654-002	22-26	.070/1.78	.065/1.65	.017/0.43	.139/3.53	.120/3.05	.050/1.27
75654-002LF	22-26	.070/1.78	.065/1.65	.017/0.43	.139/3.53	.120/3.05	.050/1.27
75654-003	18-20	.104/2.64	.104/2.64	.021/0.53	.139/3.53	.120/3.05	.050/1.27
75654-003LF	18-20	.104/2.64	.104/2.64	.021/0.53	.139/3.53	.120/3.05	.050/1.27

OBSOLETE  
NOTE 6  
OBSOLETE  
NOTE 6  
OBSOLETE  
NOTE 6

NOTES:

1. PLATING: 100μ"/2.54μ SnPb MINIMUM PRE-PLATED  
P/N WITH LF SUFFIX: 100μ"/2.54μ Sn MINIMUM PRE-PLATED
2. PART MAY BE USED WITH MINI-LATCH HSG.
3. APPLICABLE SPECIFICATIONS:  
A. BUS-12-098: PRODUCT SPECIFICATION  
B. TA-211: CRIMP SPECIFICATION
- ④ PART NUMBERS WITH AN LF SUFFIX MEET EUROPEAN UNION DIRECTIVES AND OTHER COUNTRY REGULATIONS AS DESCRIBED IN GS-22-008.
5. THIS PRODUCT IS NOT INTENDED TO BE EXPOSED TO MANUFACTURING SOLDER PROCESSES.
- ⑥ THIS PRODUCT HAS 100% TIN PLATING IN THE INTERFACE AND HAS NOT BEEN TESTED FOR WHISKER GROWTH IN ALL INTERCONNECT ENVIRONMENTS.

mat'l. code 3/4 HD BRAS CDA NO. 260		surface <input checked="" type="checkbox"/> tolerance		projection		product family PV TERMINAL	
ltr	ecn no	dr	date	tolerances unless otherwise specified		title	
H				angles	fr tol	INCH/MM	
				0° ±2'	XXX ±.01/X±3 XXX ±.005/XX±13 XXX ±.0020/XXX±.051	scale 1:1	
		dr	T. BREWBAKER	2005-05-23			
		engr	T. BREWBAKER	2005-05-23			
		chr	T. BREWBAKER	2005-05-23			
		appd	T. BREWBAKER	2005-05-23			
sheet index	revision sheet					dwg no <span style="float: right;">sheet 2 of 2 size</span> <b>75654</b> <span style="float: right;">A4</span> type CUSTOMER Drawing	