



Chipsmall Limited consists of a professional team with an average of over 10 year of expertise in the distribution of electronic components. Based in Hongkong, we have already established firm and mutual-benefit business relationships with customers from,Europe,America and south Asia,supplying obsolete and hard-to-find components to meet their specific needs.

With the principle of "Quality Parts,Customers Priority,Honest Operation,and Considerate Service",our business mainly focus on the distribution of electronic components. Line cards we deal with include Microchip,ALPS,ROHM,Xilinx,Pulse,ON,Everlight and Freescale. Main products comprise IC,Modules,Potentiometer,IC Socket,Relay,Connector.Our parts cover such applications as commercial,industrial, and automotives areas.

We are looking forward to setting up business relationship with you and hope to provide you with the best service and solution. Let us make a better world for our industry!



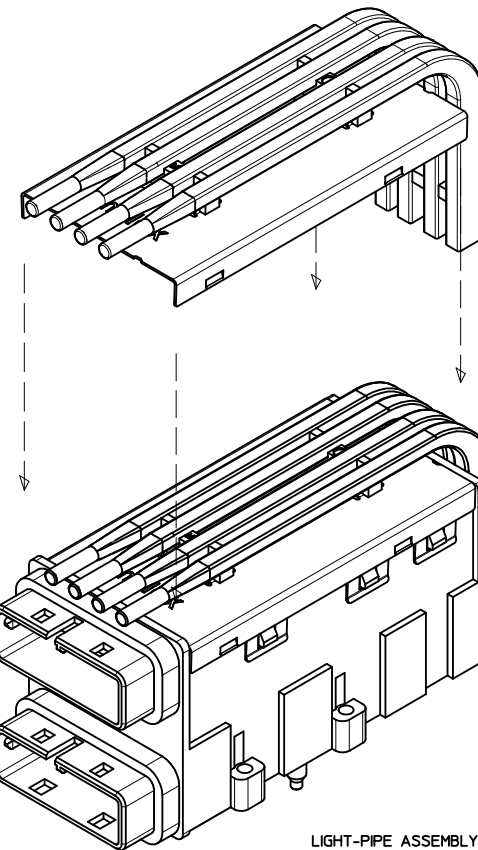
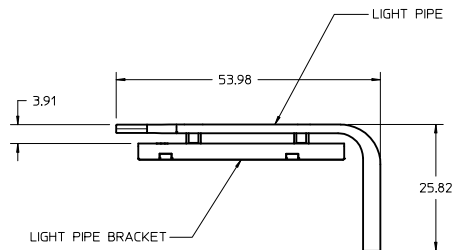
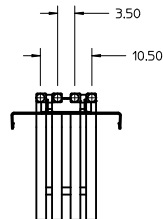
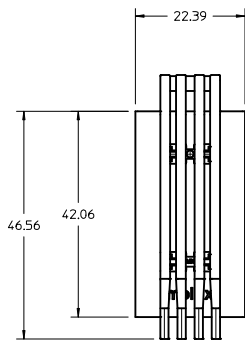
## Contact us

Tel: +86-755-8981 8866 Fax: +86-755-8427 6832

Email & Skype: info@chipsmall.com Web: www.chipsmall.com

Address: A1208, Overseas Decoration Building, #122 Zhenhua RD., Futian, Shenzhen, China





LIGHT-PIPE ASSEMBLY  
SHOWN ASSEMBLED TO  
IPASS CONNECTOR  
(SEE NOTE 3)

NOTES :

1. MATERIALS:

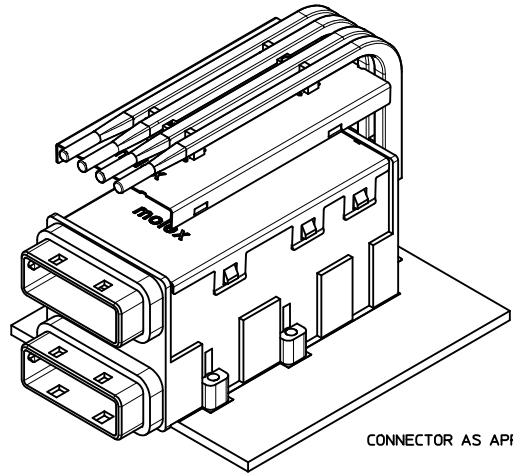
LIGHT PIPES: POLYCARBONATE, CLEAR.

MOUNTING BRACKET: STAINLESS STEEL ALLOY.

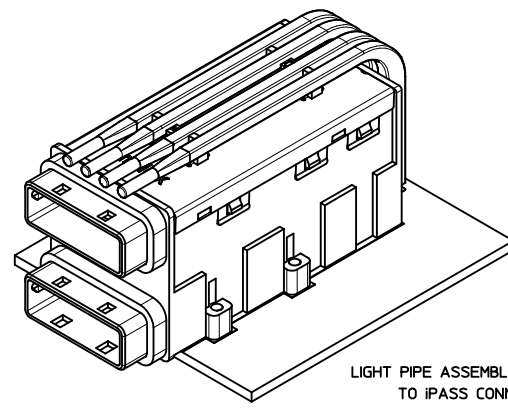
2. LIGHT PIPE ASSEMBLY #170416-0101 IS ATTACHED TO THE COVER OF CONNECTOR ASSEMBLIES 75758-0101 THRU 75758-0111 BY THE CUSTOMER.

3. IPASS CONNECTOR ASSEMBLIES 75758-0101 THRU 75758-0111 ARE SOLD SEPARATELY AND SHOWN FOR REFERENCE ONLY. SEE SALES DRAWING: SD-75758-010.

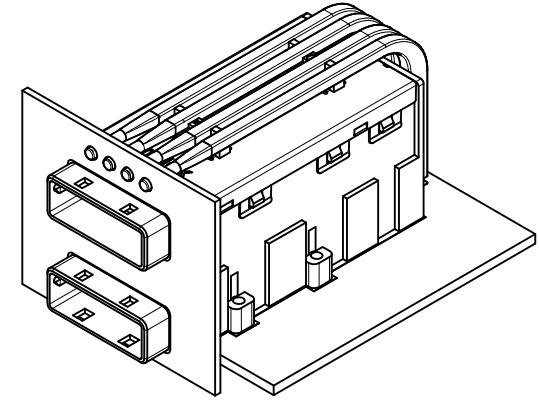
RELEASED EIC NO: UCP2012-1063 DRAWN BY: SBGJEL CHKD: MBANAKIS APPR: MBANAKIS 2011/09/19 2011/10/20	QUALITY SYMBOLS	GENERAL TOLERANCES (UNLESS SPECIFIED)	DIMENSION STYLE	SCALE	DESIGN UNITS	THIRD ANGLE PROJECTION
	▽=0	4 PLACES ±0.13	MM ONLY	2:1	METRIC	ASSEMBLY, LIGHT PIPE FOR IPASS 26X26 STACKED 2X1
	▽=0	3 PLACES ±0.25				MOLEX INCORPORATED
	▽=0	1 PLACE ±0.25				SD-170416-0101
		ANGULAR ±1/2°				
		DRAFT WHERE APPLICABLE MUST REMAIN WITHIN DIMENSIONS				
			SIZE D			



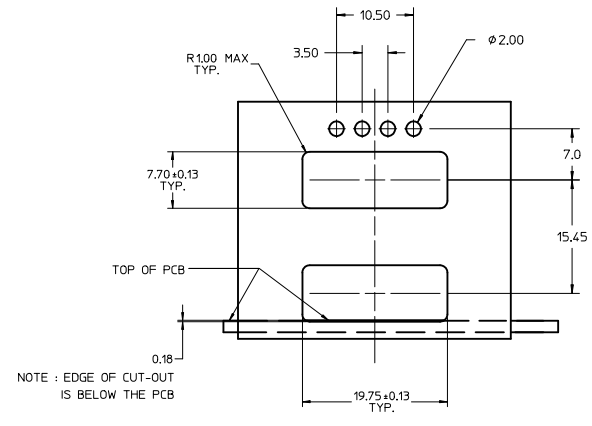
CONNECTOR AS APPLIED TO PCB



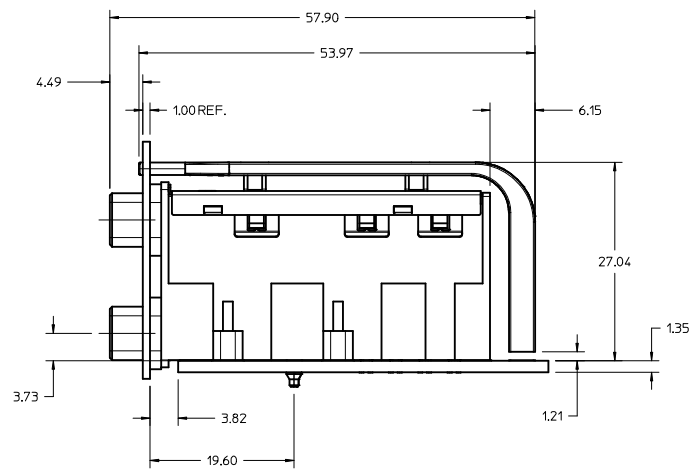
LIGHT PIPE ASSEMBLY AS APPLIED TO iPASS CONNECTOR



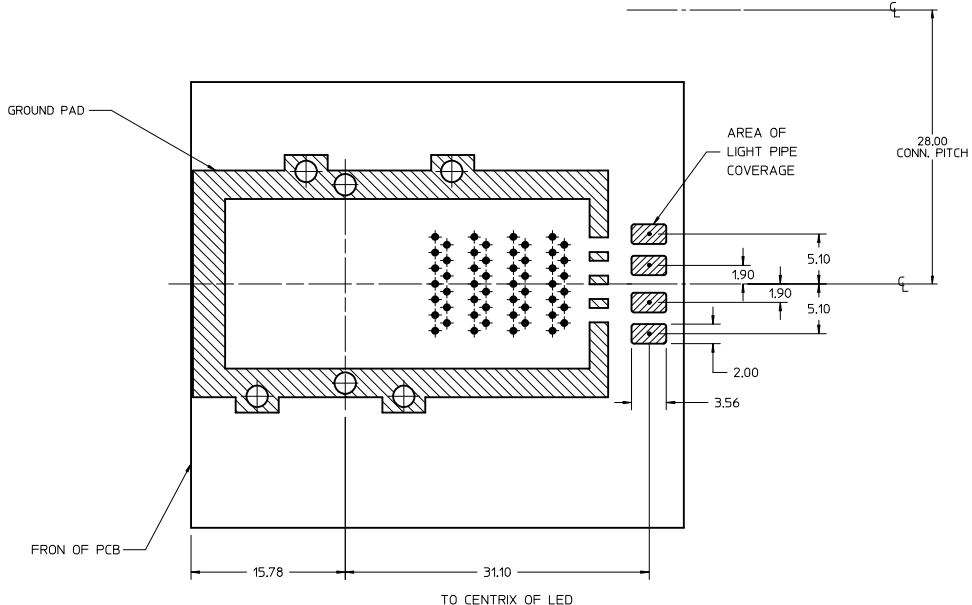
CONNECTOR ASSEMBLY FULLY ASSEMBLED AS INSTALLED IN PANEL



RECOMMENDED MOUNTING PANEL CUT-OUT (SUPPLIED BY CUSTOMER)



SEE SHEET 1 IEC NO: UCP2012-063 DRAWN: SBGIEL CHKD: MBANKIS APPR: MBANKIS DATE: 2011/09/19 DATE: 2011/10/20	QUALITY SYMBOLS	GENERAL TOLERANCES (UNLESS SPECIFIED)	DIMENSION STYLE	SCALE	DESIGN UNITS	THIRD ANGLE PROJECTION
	▽=0 ▽=0	mm INCH 4 PLACES ± --- ± --- 3 PLACES ± --- ± --- 2 PLACES ± 0.13 ± --- 1 PLACE ± 0.25 ± --- ANGULAR ± 1/2°	MM ONLY	3:1	METRIC	▽ ▽
	DRAFT WHERE APPLICABLE MUST REMAIN WITHIN DIMENSIONS	DRAWN BY: SBGIEL CHECKED BY: MBANKIS APPROVED BY: MBANKIS DATE: 2011/09/19 DATE: 2011/10/20	MATERIAL NO: 75758-010* DOCUMENT NO: SD-170416-0101	TITLE: ASSEMBLY, LIGHT PIPE FOR IPASS 26X26 STACKED 2X1 MOLEX INCORPORATED	SHEET NO: 2 OF 3	
	THIS DRAWING CONTAINS INFORMATION THAT IS PROPRIETARY TO MOLEX INCORPORATED AND SHOULD NOT BE USED WITHOUT WRITTEN PERMISSION					



**RECOMMENDED PCB LAYOUT**

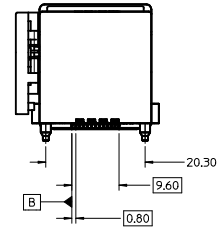
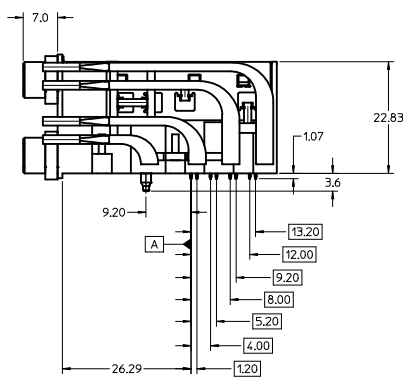
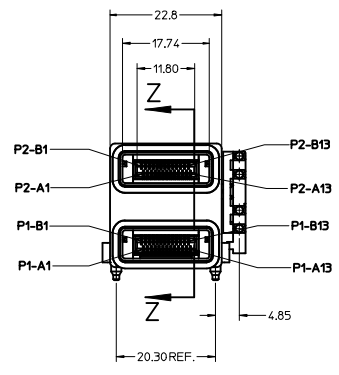
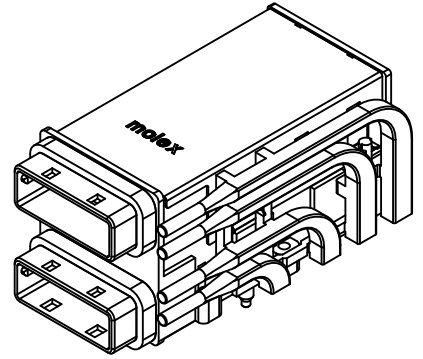
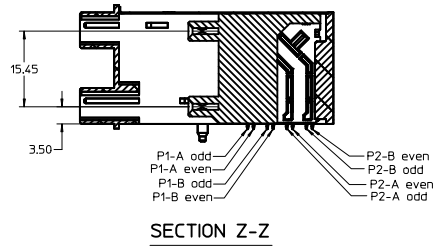
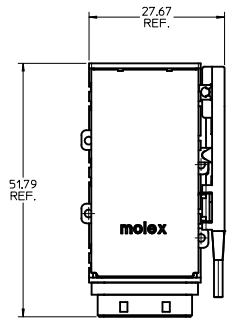
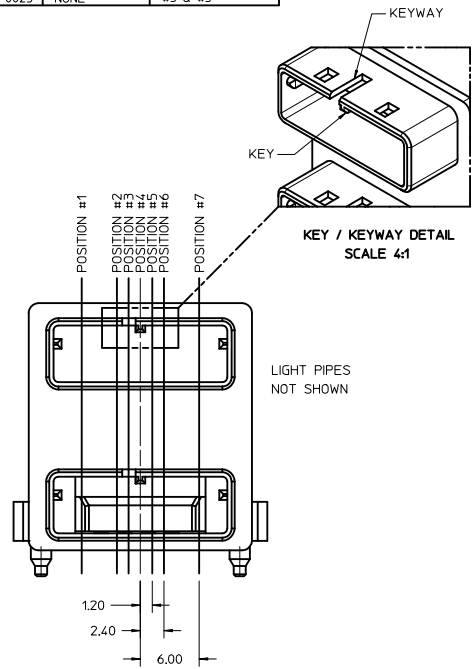
THICKNESS = 1.35mm MIN.

NOTE:  
 1. DIMENSIONS SHOWN ARE FOR LED PLACEMENT ONLY.  
 SEE SALES DRAWING SD-75758-010 FOR DETAILED  
 PCB LAYOUT AND SPECIFICATIONS.

SEE SHEET 1 IEC NO: UCP2012-1063 DRAWN: SBOGIEL CHKD: APPROVED: MBANKIS DATE: 2011/09/19 DATE: 2011/10/20	QUALITY SYMBOLS ▽=0 ▽=0	GENERAL TOLERANCES (UNLESS SPECIFIED) mm INCH 4 PLACES ±.10 ±.004 3 PLACES ±.15 ±.006 2 PLACES ±.25 ±.010 1 PLACE ±.50 ±.020 ANGULAR ±1/2°	DIMENSION STYLE MM ONLY	SCALE 2:1	DESIGN UNITS METRIC	THIRD ANGLE PROJECTION
	DRAWN BY SBOGIEL	DATE 2011/09/19	TITLE ASSEMBLY, LIGHT PIPE FOR IPASS 26X26 STACKED 2X1			
	CHECKED BY	DATE	MOLEX INCORPORATED			
	APPROVED BY MBANKIS	DATE 2011/10/20	MATERIAL NO. 75758-010*	DOCUMENT NO. SD-170416-0101	SHEET NO. 3 OF 3	

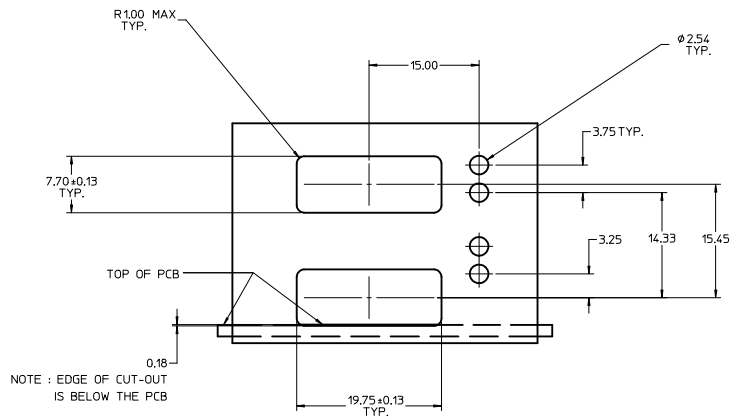
THIS DRAWING CONTAINS INFORMATION THAT IS PROPRIETARY TO MOLEX INCORPORATED AND SHOULD NOT BE USED WITHOUT WRITTEN PERMISSION

KEY/KEYWAY OPTIONS			
PART NUMBER	KEY POSITION	KEYWAY POSITION	
TIN/LEAD	LEAD-FREE		
75758-0001	75758-0021	NONE	NONE
75758-0002	75758-0022	#3	NONE
75758-0003	75758-0023	#4	NONE
75758-0004	75758-0024	#4	#3 & #5
75758-0005	75758-0025	NONE	#3 & #5



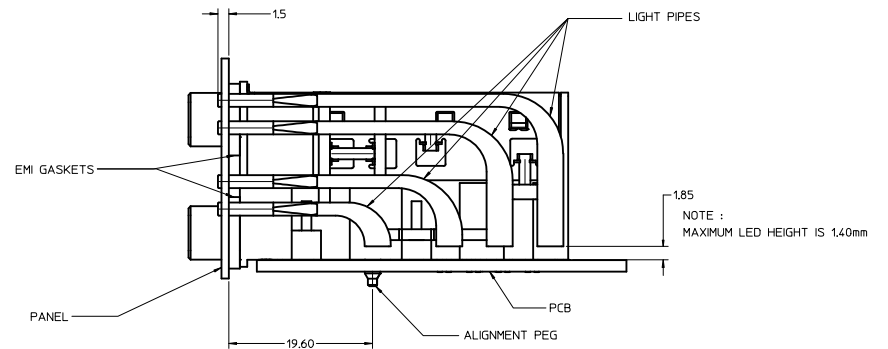
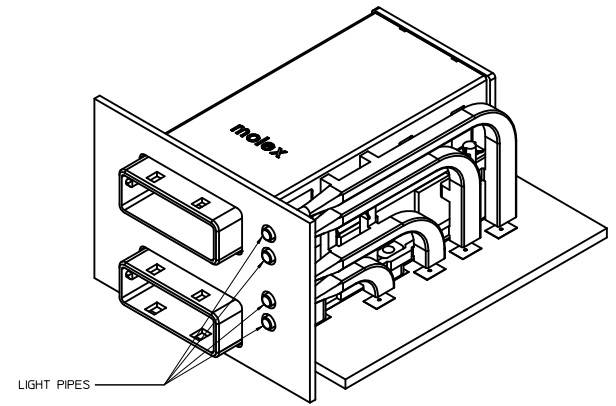
- NOTES :
- MATERIALS :  
 CONNECTOR HOUSING - HIGH TEMP THERMOPLASTIC,  
 GLASS-FILLED, UL94V-0,  
 COLOR - BLACK  
 EMI HOUSING - DIE CAST ALLOY, NICKEL PLATED FINISH  
 COVER - STAINLESS STEEL ALLOY  
 CPI TERMINALS - COPPER ALLOY  
 EMI GASKETS - CONDUCTIVE POLYMER  
 LIGHT PIPE - CLEAR THERMOPLASTIC, UL94V-0
  - TERMINAL PLATING :  
 CONTACT AREA - 0.76µ MIN GOLD OVER 2.54µ MIN NICKEL.  
 COMPLIANT AREA - 0.76-1.52µ TIN/LEAD (90/10) OVER  
 2.54µ MIN NICKEL.
  - PACKAGING SPECIFICATION : TRAY PACK IN BOX.
  - REFER TO PS-75586-001 PRODUCT SPEC FOR ALL ELECTRICAL, MECHANICAL AND ENVIRONMENTAL SPECIFICATIONS.
  - THIS CONNECTOR IS DESIGNED TO MATE WITH MOLEX CABLE SERIES 74548.
  - REQUIRES MOUNTING HARDWARE : (4) M2 X 8MM CAP SCREWS OR EQUIV.  
 MAX. TORQUE 2.3 in/lbs.

ADD LEAD-FREE #'s EC NO. UCP2012-1003 DRWNS:SRGIEL 2011/10/13 CHKD: APPR:RBANKIS 2011/10/20 REV DESCRIPTION	QUALITY SYMBOLS	GENERAL TOLERANCES (UNLESS SPECIFIED)	DIMENSION STYLE	SCALE	DESIGN UNITS	THIRD ANGLE PROJECTION
	∇=0 ∇=0 ∇=0	4 PLACES ± --- INCH 3 PLACES ± --- INCH 2 PLACES ± 0.25 INCH 1 PLACE ± 0.25 INCH ANGULAR ±1/2°	MM ONLY 2:1 METRIC	DRAWN BY: J JANTELEZ10 CHECKED BY: KLANG APPROVED BY: BANAKIS	DATE: 02/05/2008 DATE: 02/05/2008 DATE: 02/05/2008	TITLE: IPASS STACKED 26/26 CIRCUIT CONNECTOR W/LIGHT PIPES MOLEX INCORPORATED
DRAFT WHERE APPLICABLE MUST REMAIN WITHIN DIMENSIONS		MATERIAL NO. 75758-000*		DOCUMENT NO. SD-75758-001		THIS DRAWING CONTAINS INFORMATION THAT IS PROPRIETARY TO MOLEX INCORPORATED AND SHOULD NOT BE USED WITHOUT WRITTEN PERMISSION



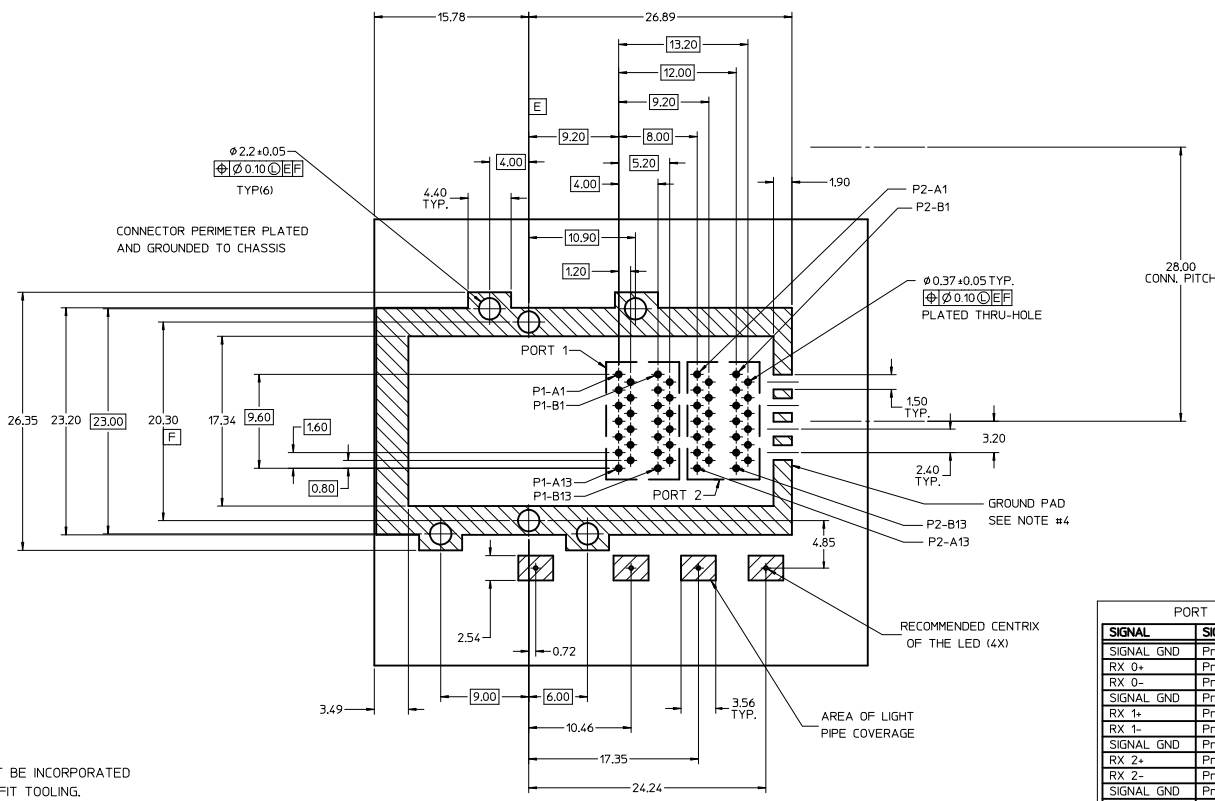
**PANEL CUT-OUT**

MAXIMUM THICKNESS = 1.50  
(NOT SUPPLIED)



**ASSEMBLY VIEW**

<b>SEE SHEET 1</b> EIC NO: UCP2012-1063 DRAWN: SROGIEL 2011/10/13 CHKD: APPR: HBANKIS 2011/10/20 REV DESCRIPTION	<b>QUALITY SYMBOLS</b> ▽=0 ▽=0 ▽=0		<b>GENERAL TOLERANCES (UNLESS SPECIFIED)</b> <table border="1"> <thead> <tr> <th></th> <th>mm</th> <th>INCH</th> </tr> </thead> <tbody> <tr> <td>4 PLACES</td> <td>±---</td> <td>±---</td> </tr> <tr> <td>3 PLACES</td> <td>±---</td> <td>±---</td> </tr> <tr> <td>2 PLACES</td> <td>±0.25</td> <td>±---</td> </tr> <tr> <td>1 PLACE</td> <td>±0.25</td> <td>±---</td> </tr> <tr> <td colspan="3">ANGULAR ±1/2°</td> </tr> </tbody> </table>			mm	INCH	4 PLACES	±---	±---	3 PLACES	±---	±---	2 PLACES	±0.25	±---	1 PLACE	±0.25	±---	ANGULAR ±1/2°			<b>DIMENSION STYLE</b> <b>MM ONLY</b>	<b>SCALE</b> <b>3:1</b>	<b>DESIGN UNITS</b> <b>METRIC</b>	<b>THIRD ANGLE PROJECTION</b>
		mm	INCH																							
	4 PLACES	±---	±---																							
	3 PLACES	±---	±---																							
2 PLACES	±0.25	±---																								
1 PLACE	±0.25	±---																								
ANGULAR ±1/2°																										
<b>DRAFT WHERE APPLICABLE MUST REMAIN WITHIN DIMENSIONS</b>			<b>MATERIAL NO.</b> <b>75758-000*</b>	<b>DATE</b> 02/05/2008	<b>DATE</b> 02/05/2008	<b>DATE</b> 02/05/2008	<b>TITLE</b> <b>IPASS STACKED 26/26 CIRCUIT CONNECTOR W/LIGHT PIPES</b>																			
			<b>MOLEX INCORPORATED</b>	<b>DOCUMENT NO.</b> <b>SD-75758-001</b>	<b>SHEET NO.</b> 2 OF 3																					
			<b>THIS DRAWING CONTAINS INFORMATION THAT IS PROPRIETARY TO MOLEX INCORPORATED AND SHOULD NOT BE USED WITHOUT WRITTEN PERMISSION</b>																							



PORT 1		PORT 2	
SIGNAL	SIGNAL PIN	SIGNAL	SIGNAL PIN
SIGNAL GND	Pn-A1	SIGNAL GND	Pn-B1
RX 0+	Pn-A2	TX 0+	Pn-B2
RX 0-	Pn-A3	TX 0-	Pn-B3
SIGNAL GND	Pn-A4	SIGNAL GND	Pn-B4
RX 1+	Pn-A5	TX 1+	Pn-B5
RX 1-	Pn-A6	TX 1-	Pn-B6
SIGNAL GND	Pn-A7	SIGNAL GND	Pn-B7
RX 2+	Pn-A8	TX 2+	Pn-B8
RX 2-	Pn-A9	TX 2-	Pn-B9
SIGNAL GND	Pn-A10	SIGNAL GND	Pn-B10
RX 3+	Pn-A11	TX 3+	Pn-B11
RX 3-	Pn-A12	TX 3-	Pn-B12
SIGNAL GND	Pn-A13	SIGNAL GND	Pn-B13

PIN ASSIGNMENT

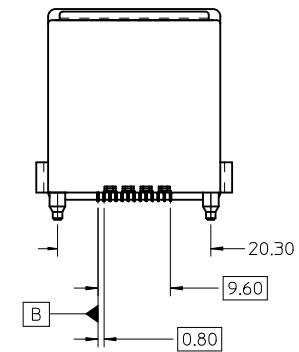
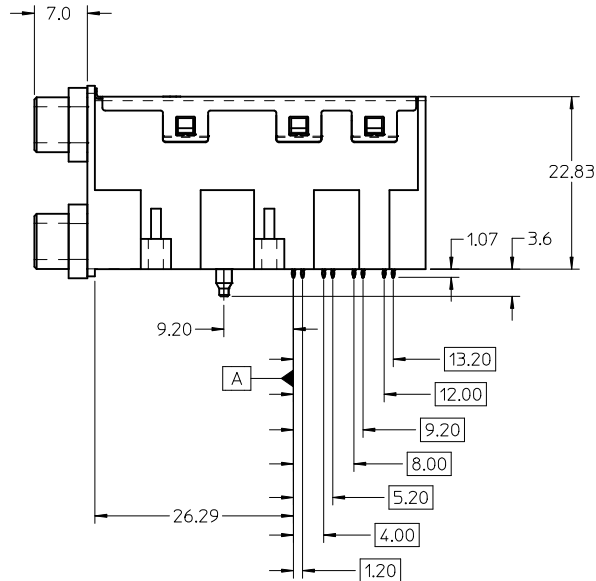
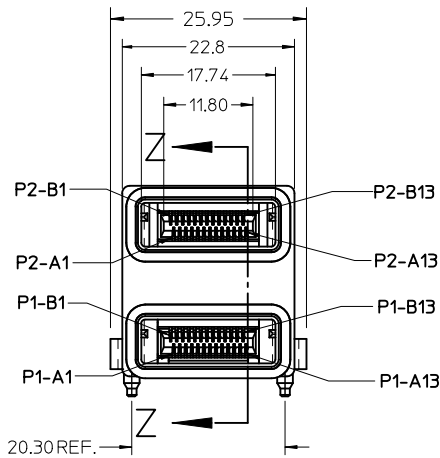
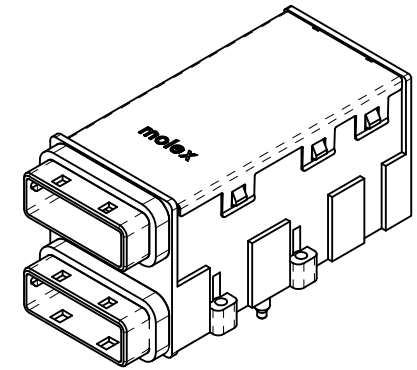
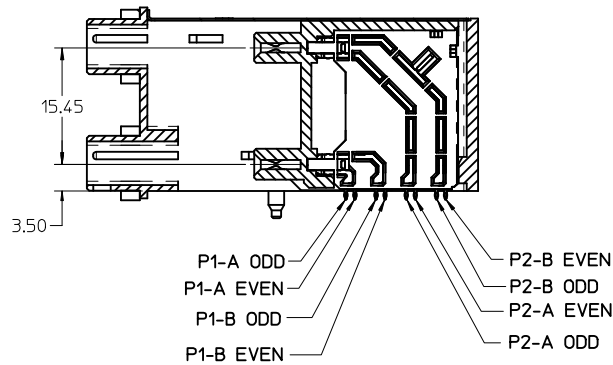
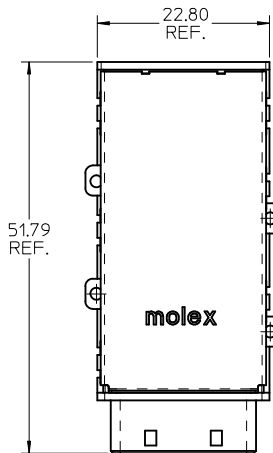
- NOTES:
- CROSS-HATCHED AREA MUST BE INCORPORATED IN THE FLAT ROCK PRESS-FIT TOOLING.
  - RECOMMENDED LED'S INCLUDE THE FOLLOWING :  
DIALIGHT : 597-77x1-5xx SERIES  
CHICAGO MINIATURE : 7016 SERIES  
KINGBRIGHT : APBL3025 SERIES (BICOLOR)  
APL3015 SERIES (SINGLE COLOR)
  - LED'S MUST HAVE A MAXIMUM HEIGHT OF 1.4mm AND A MINIMUM HEIGHT OF 0.7mm
  - PLATE GROUND PAD WITH EMERSON SILVER OR GOLD.
  - RECOMMENDED DRILL SIZE FOR 0.37 $\phi$  FINISHED PTH IS 0.457 $\phi$  (#77 DRILL)
  - RECOMMENDED ANNULAR RING AROUND 0.37 $\phi$  FINISHED PTH IS 0.73 $\phi$

RECOMMENDED PCB LAYOUT

THICKNESS = 1.35mm MIN.

SEE SHEET 1 EIC NO: UCP2012-1063 DRAWNS:BOGIEL CHKD: APPROV:BANAKIS	QUALITY SYMBOLS ▽=0 ▽=0 ▽=0	GENERAL TOLERANCES (UNLESS SPECIFIED) mm INCH 4 PLACES ±--- ±--- 3 PLACES ±--- ±--- 2 PLACES ±0.25 ±--- 1 PLACE ±0.25 ±--- ANGULAR ±1/2°	DIMENSION STYLE MM ONLY	SCALE 2:1	DESIGN UNITS METRIC	THIRD ANGLE PROJECTION	
	DRAWN BY JJANTELEZ10	DATE 02/05/2008	CHECKED BY KLANG	DATE 02/05/2008	APPROVED BY BANAKIS	DATE 02/05/2008	TITLE IPASS STACKED 26/26 CIRCUIT CONNECTOR W/LIGHT PIPES
	MATERIAL NO. 75758-000*	DOCUMENT NO. SD-75758-001	MOLEX INCORPORATED	SHEET NO. 3 OF 3	THIS DRAWING CONTAINS INFORMATION THAT IS PROPRIETARY TO MOLEX INCORPORATED AND SHOULD NOT BE USED WITHOUT WRITTEN PERMISSION		
	DRAFT WHERE APPLICABLE MUST REMAIN WITHIN DIMENSIONS						



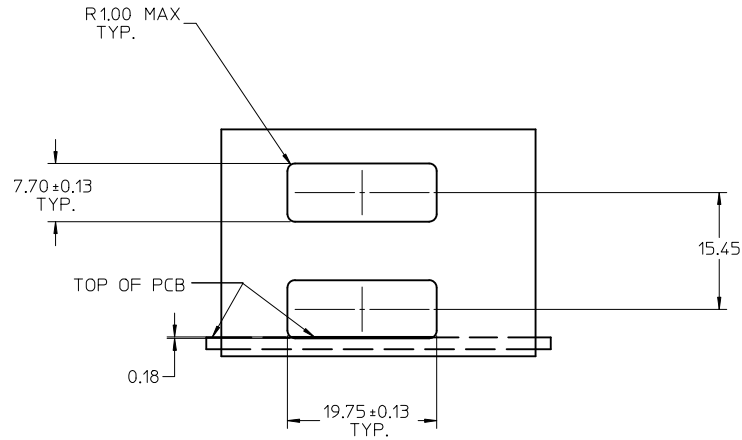


NOTES :

- MATERIALS :  
CONNECTOR HOUSING - HIGH TEMP THERMOPLASTIC, GLASS-FILLED, UL94V-0, COLOR - BLACK  
EMI HOUSING - DIE CAST ALLOY, NICKEL PLATED FINISH  
COVER - STAINLESS STEEL ALLOY  
CPI TERMINALS - COPPER ALLOY  
EMI GASKETS - CONDUCTIVE POLYMER
- TERMINAL PLATING :  
CONTACT AREA - 0.76μ MIN GOLD OVER 2.54μ MIN NICKEL.  
COMPLIANT AREA - 0.76-1.52μ TIN/LEAD (90/10) OVER 1.27μ MIN NICKEL.
- PACKAGING SPECIFICATION : TRAY PACK (TBD)
- REFER TO PS-75586-001 PRODUCT SPEC FOR ALL ELECTRICAL, MECHANICAL AND ENVIRONMENTAL SPECIFICATIONS.
- THIS CONNECTOR IS DESIGNED TO MATE WITH MOLEX CABLE SERIES 74548.
- REQUIRES MOUNTING HARDWARE : (4) M2 X 8MM CAP SCREWS OR EQUIV. MAX. TORQUE 2.3 in/lbs.

UPD TERM PLATING EC NO: UCP2011-3957 DRWNG: GONZALEZ01 2011/06/21 CHKD: KLANG 2011/06/21 APPR: MBANAKIS 2011/07/06	QUALITY SYMBOLS	GENERAL TOLERANCES (UNLESS SPECIFIED)	DIMENSION STYLE		SCALE	DESIGN UNITS	THIRD ANGLE PROJECTION	
	▽=0 ▽=0		mm	INCH	2:1	METRIC		
REV	DESCRIPTION	4 PLACES ± --- ± ---	MM ONLY		TITLE		IPASS STACKED 26/26 CIRCUIT CONNECTOR	
		3 PLACES ± --- ± ---	DRAWN BY JJANTELEZ10		DATE 01/23/08			
		2 PLACES ± 0.25 ± ---	CHECKED BY KLANG		DATE 01/23/08		MOLEX INCORPORATED	
		1 PLACE ± 0.25 ± ---	APPROVED BY MBANAKIS		DATE 01/23/08			
		ANGULAR ±1/2°	MATERIAL NO.		DOCUMENT NO.		SHEET NO. 1 OF 3	
			SEE CHART		SD-75758-002			
		DRAFT WHERE APPLICABLE MUST REMAIN WITHIN DIMENSIONS	THIS DRAWING CONTAINS INFORMATION THAT IS PROPRIETARY TO MOLEX INCORPORATED AND SHOULD NOT BE USED WITHOUT WRITTEN PERMISSION					

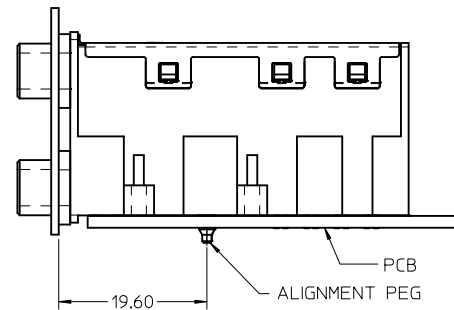
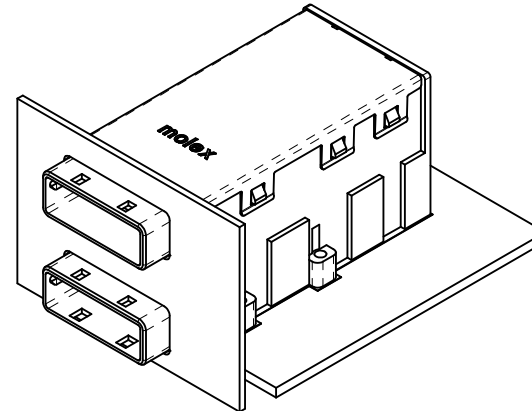




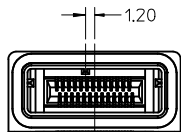
**PANEL CUT-OUT**

MAXIMUM THICKNESS = 1.50  
(NOT SUPPLIED)

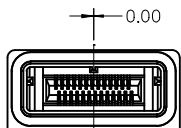
NOTE : EDGE OF CUT-OUT  
IS BELOW THE PCB



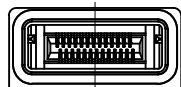
**ASSEMBLY VIEW**



KEY WAY - 3



KEY WAY - 4



KEY WAY - NONE

**KEY WAY OPTIONS**

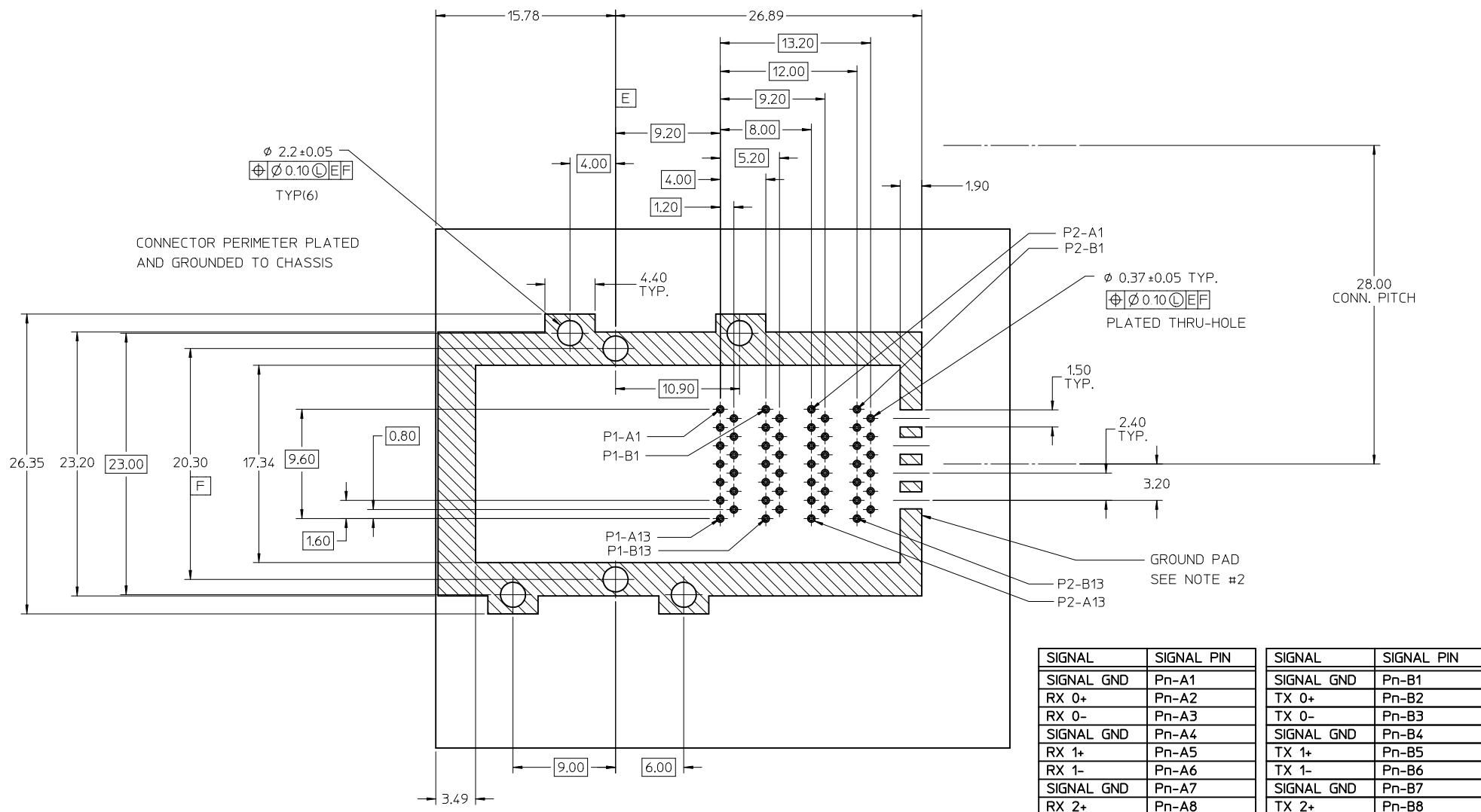
PART NUMBER	KEY WAY
75758-0101	NONE
75758-0102	#3
75758-0103	#4
-	-
-	-
-	-
-	-
-	-

SEE SHEET 1 EC NO: UCP2011-3957 DRWN: JGONZALEZ01 2011/06/21 CHKD: KLANG 2011/06/21 APPR: MBANAKIS 2011/07/06	QUALITY SYMBOLS
	▼=0 ▽=0

GENERAL TOLERANCES (UNLESS SPECIFIED)	
	mm INCH
4 PLACES ±	±
3 PLACES ±	±
2 PLACES ±	±0.25
1 PLACE ±	±0.25
ANGULAR ±1/2°	
DRAFT WHERE APPLICABLE MUST REMAIN WITHIN DIMENSIONS	

DIMENSION STYLE <b>MM ONLY</b>	
DRAWN BY	DATE
JJANTELEZ10	01/23/08
CHECKED BY	DATE
KLANG	01/23/08
APPROVED BY	DATE
MBANAKIS	01/23/08
MATERIAL NO.	
SEE SHEET 1	

SCALE <b>2:1</b>	DESIGN UNITS <b>METRIC</b>	THIRD ANGLE PROJECTION
TITLE <b>IPASS STACKED 26/26 CIRCUIT CONNECTOR</b>		
MOLEX INCORPORATED		SHEET NO. 2 OF 3
DOCUMENT NO. <b>SD-75758-002</b>		
THIS DRAWING CONTAINS INFORMATION THAT IS PROPRIETARY TO MOLEX INCORPORATED AND SHOULD NOT BE USED WITHOUT WRITTEN PERMISSION		



- NOTES :
- CROSS-HATCHED AREA MUST BE INCORPORATED IN THE FLAT ROCK PRESS-FIT TOOLING.
  - PLATE GROUND PAD WITH EMERSION SILVER OR GOLD.
  - RECOMMENDED DRILL SIZE FOR 0.37 $\phi$  FINISHED PTH IS 0.457 $\phi$  (#77 DRILL)
  - RECOMMENDED ANNULAR RING AROUND 0.37 $\phi$  FINISHED PTH IS 0.73 $\phi$

SIGNAL	SIGNAL PIN	SIGNAL	SIGNAL PIN
SIGNAL GND	Pn-A1	SIGNAL GND	Pn-B1
RX 0+	Pn-A2	TX 0+	Pn-B2
RX 0-	Pn-A3	TX 0-	Pn-B3
SIGNAL GND	Pn-A4	SIGNAL GND	Pn-B4
RX 1+	Pn-A5	TX 1+	Pn-B5
RX 1-	Pn-A6	TX 1-	Pn-B6
SIGNAL GND	Pn-A7	SIGNAL GND	Pn-B7
RX 2+	Pn-A8	TX 2+	Pn-B8
RX 2-	Pn-A9	TX 2-	Pn-B9
SIGNAL GND	Pn-A10	SIGNAL GND	Pn-B10
RX 3+	Pn-A11	TX 3+	Pn-B11
RX 3-	Pn-A12	TX 3-	Pn-B12
SIGNAL GND	Pn-A13	SIGNAL GND	Pn-B13

Pn - 'n' DENOTES PORT NUMBER

RECOMMENDED PCB LAYOUT

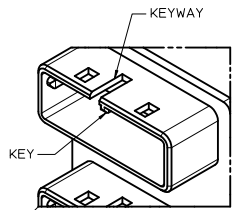
THICKNESS = 1.35mm MIN.

SEE SHEET 1 EC NO: UCP2011-3957 DRWN: JGONZALEZ01 2011/06/21 CHKD: KLANG 2011/06/21 APPR: MBANAKIS 2011/07/06	QUALITY SYMBOLS	GENERAL TOLERANCES (UNLESS SPECIFIED) <table border="1"> <tr><td></td><td>mm</td><td>INCH</td></tr> <tr><td>4 PLACES</td><td>± 0.15</td><td>± 0.006</td></tr> <tr><td>3 PLACES</td><td>± 0.20</td><td>± 0.008</td></tr> <tr><td>2 PLACES</td><td>± 0.25</td><td>± 0.010</td></tr> <tr><td>1 PLACE</td><td>± 0.30</td><td>± 0.012</td></tr> </table> ANGULAR ±1/2° DRAFT WHERE APPLICABLE MUST REMAIN WITHIN DIMENSIONS		mm	INCH	4 PLACES	± 0.15	± 0.006	3 PLACES	± 0.20	± 0.008	2 PLACES	± 0.25	± 0.010	1 PLACE	± 0.30	± 0.012
			mm	INCH													
	4 PLACES		± 0.15	± 0.006													
	3 PLACES		± 0.20	± 0.008													
2 PLACES	± 0.25	± 0.010															
1 PLACE	± 0.30	± 0.012															
▽=0																	
▽=0																	
▽=0																	

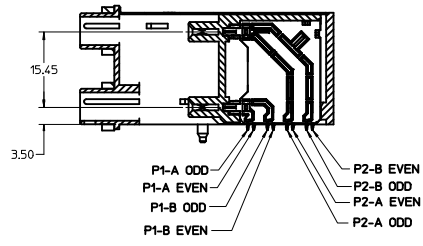
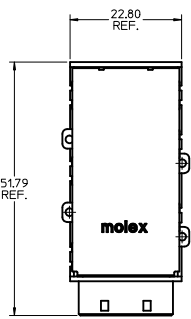
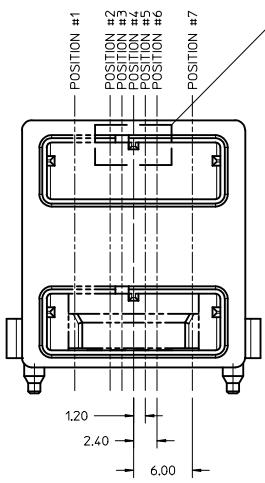
DIMENSION STYLE <b>MM ONLY</b> DRAWN BY JJANTELEZ10 DATE 01/23/08 CHECKED BY KLANG DATE 01/23/08 APPROVED BY MBANAKIS DATE 01/23/08 MATERIAL NO. SEE SHEET 1 SIZE C	SCALE 2:1	DESIGN UNITS METRIC	THIRD ANGLE PROJECTION
	TITLE <b>IPASS STACKED 26/26 CIRCUIT CONNECTOR</b>		
	MOLEX <b>MOLEX INCORPORATED</b>		
	DOCUMENT NO. SD-75758-002	SHEET NO. 3 OF 3	

THIS DRAWING CONTAINS INFORMATION THAT IS PROPRIETARY TO MOLEX INCORPORATED AND SHOULD NOT BE USED WITHOUT WRITTEN PERMISSION

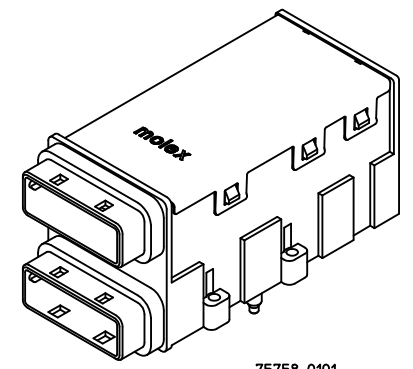
KEYING & PLATING OPTIONS			
TIN/LEAD PART NUMBER	LEAD FREE PART NUMBER	KEY POSITION	KEYWAY POSITION
75758-0101	75758-0201	NONE	NONE
75758-0102	75758-0202	#3	NONE
75758-0103	75758-0203	#4	NONE
75758-0104	75758-0204	#4	#3 & #5
75758-0105	75758-0205	NONE	#3 & #5
75758-0106	75758-0206	#4	#3
75758-0107	75758-0207	NONE	#3
75758-0108	75758-0208	#4	#5
75758-0109	75758-0209	NONE	#5
75758-0110	75758-0210	#2 & #4	NONE
75758-0111	75758-0211	#4 & #6	NONE



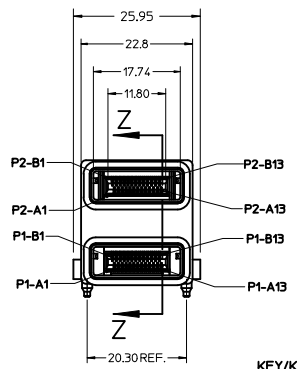
KEY / KEYWAY DETAIL SCALE 4:1



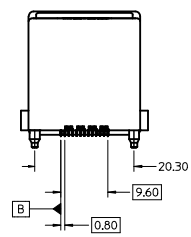
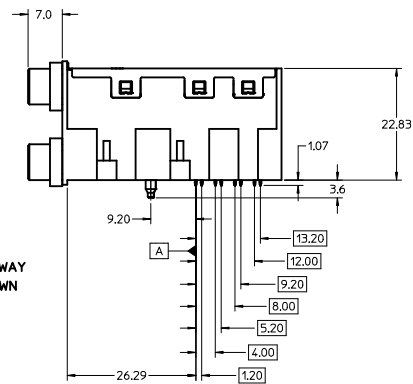
SECTION Z-Z



75758-0101 SHOWN FOR REF. ONLY

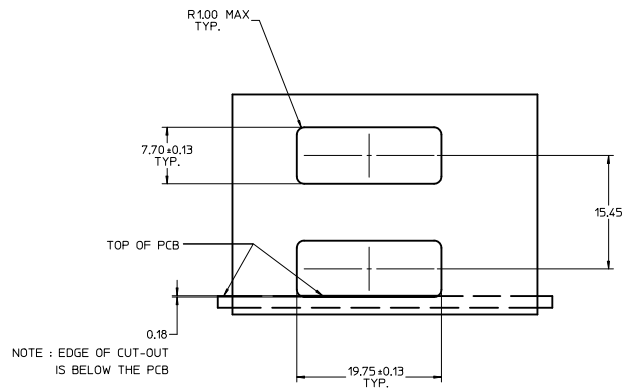


KEY/KEYWAY NOT SHOWN



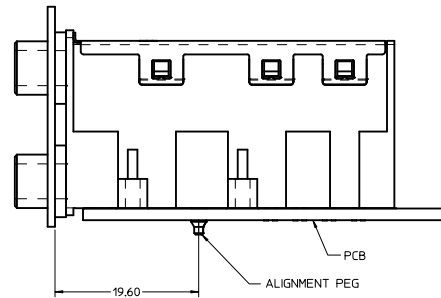
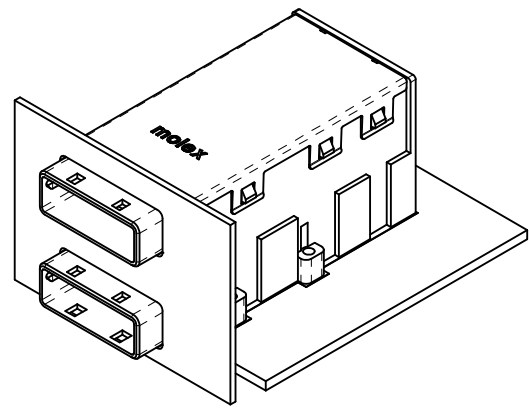
- NOTES :
- MATERIALS :
    - CONNECTOR HOUSING - HIGH TEMP THERMOPLASTIC, GLASS-FILLED, UL94V-0, COLOR - BLACK
    - EMI HOUSING - DIE CAST ALLOY, FINISH: NICKEL
    - COVER - STAINLESS STEEL ALLOY
    - CPI TERMINALS - COPPER ALLOY
    - EMI GASKETS - CONDUCTIVE POLYMER
  - TERMINAL PLATING : SEE CHART
    - OPTION 1) TIN/LEAD - CONTACT AREA - 0.7μ MIN GOLD OVER 2.5μ MIN NICKEL. COMPLIANT AREA - 0.7-1.54mm TIN/LEAD (90/10) OVER 1.24μ MIN NICKEL.
    - OPTION 2) LEAD FREE - CONTACT AREA - 0.7μ MIN GOLD OVER 2.5μ MIN NICKEL. COMPLIANT AREA - 0.7-1.54mm TIN (TIN ONLY) OVER 1.24μ MIN NICKEL.
  - PACKAGING SPECIFICATION : TRAY PACK (TBD)
  - REFER TO PS-75586-001 PRODUCT SPEC FOR ALL ELECTRICAL, MECHANICAL AND ENVIRONMENTAL SPECIFICATIONS.
  - THIS CONNECTOR IS DESIGNED TO MATE WITH MOLEX CABLE SERIES 74548.
  - REQUIRES MOUNTING HARDWARE : (4) M2 X 8MM CAP SCREWS OR EQUIV. MAX. TORQUE 2.3 in/lbs.
  - PRODUCT IS RoHS COMPLIANT.

ADD LEAD-FREE EC NO: UCP2012-1063 DRWNSB04LEL CHKD: APPROVED: MBANAKIS DATE: 2011/09/14 2011/10/20	QUALITY SYMBOLS ∇=0 ∇=0 ∇=0	GENERAL TOLERANCES (UNLESS SPECIFIED) mm INCH		DIMENSION STYLE MM ONLY	SCALE 2:1	DESIGN UNITS METRIC	THIRD ANGLE PROJECTION	
		4 PLACES ± --- ± --- 3 PLACES ± --- ± --- 2 PLACES ± 0.25 ± --- 1 PLACE ± 0.25 ± --- ANGULAR ± 1/2°	DRAWN BY JANTELEZ10 DATE 01/23/08	CHECKED BY KLANG DATE 01/23/08	APPROVED BY MBANAKIS DATE 01/23/08	TITLE IPASS STACKED 26/26 CIRCUIT CONNECTOR		MATERIAL NO. 75758-010*
DRAFT WHERE APPLICABLE MUST REMAIN WITHIN DIMENSIONS								THIS DRAWING CONTAINS INFORMATION THAT IS PROPRIETARY TO MOLEX INCORPORATED AND SHOULD NOT BE USED WITHOUT WRITTEN PERMISSION



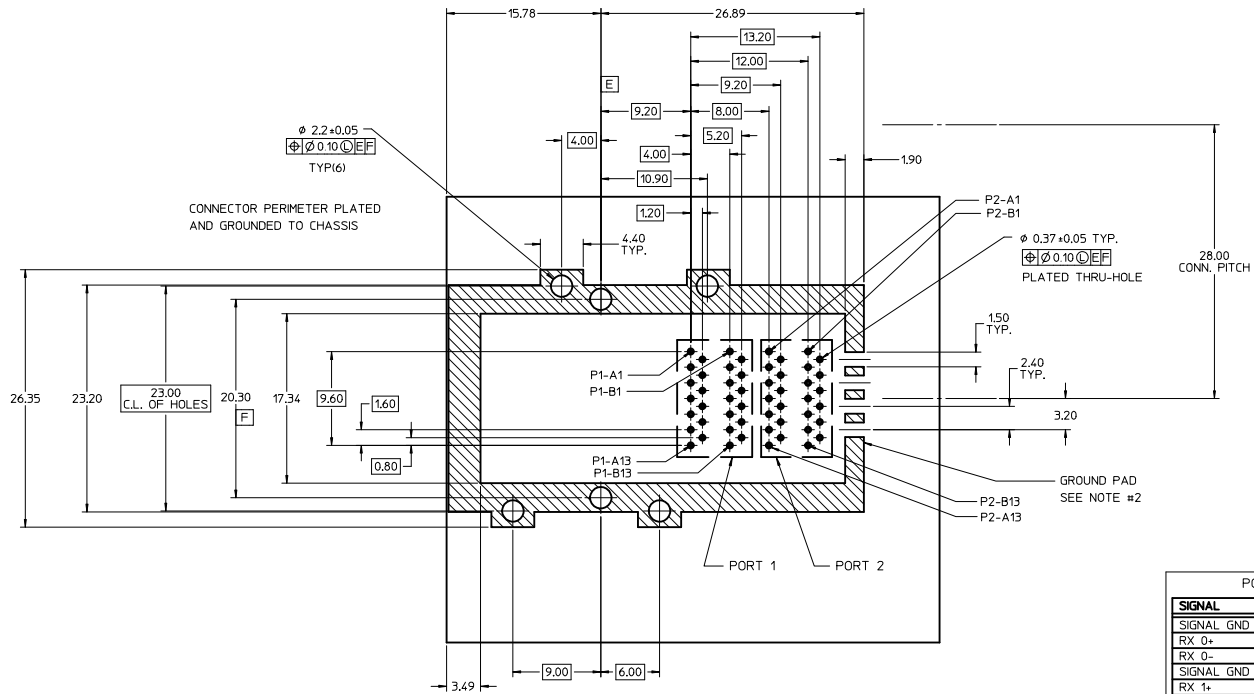
**PANEL CUT-OUT**

MAXIMUM THICKNESS = 1.50  
(NOT SUPPLIED)



**ASSEMBLY VIEW**

SEE SHEET 1 EC NO: UCP2012-1063 DORWNSB01EL 2011/09/14 CHKD: APPR:MBANKIS 2011/10/20	QUALITY SYMBOLS	GENERAL TOLERANCES (UNLESS SPECIFIED)	DIMENSION STYLE	SCALE	DESIGN UNITS	THIRD ANGLE PROJECTION
	▽=0	mm INCH	MM ONLY	3:1	METRIC	
	▽=0	4 PLACES ±--- ±---	DRAWN BY	DATE	TITLE	
	▽=0	3 PLACES ±--- ±---	JJANTELEZIO 01/23/08	01/23/08	IPASS STACKED 26/26 CIRCUIT CONNECTOR	
▽=0	2 PLACES ±0.25 ±---	CHECKED BY	DATE	MOLEX INCORPORATED MATERIAL NO. 75758-010* DOCUMENT NO. SD-75758-010 SHEET NO. 2 OF 3		
▽=0	1 PLACE ±0.25 ±---	KLANG 01/23/08	01/23/08			
	ANGULAR ±1/2°	APPROVED BY	DATE			
	DRAFT WHERE APPLICABLE MUST REMAIN WITHIN DIMENSIONS	MBANKIS 01/23/08	01/23/08			



**RECOMMENDED PCB LAYOUT**

THICKNESS = 1.35mm MIN.

**NOTES:**

- CROSS-HATCHED AREA MUST BE INCORPORATED IN THE FLAT ROCK PRESS-FIT TOOLING.
- RECOMMENDED LED'S INCLUDE THE FOLLOWING :  
DIALIGHT : 597-77x1-5xx SERIES  
CHICAGO MINIATURE : 7016 SERIES  
KINGBRIGHT : APBL3025 SERIES (BICOLOR)  
APL3015 SERIES (SINGLE COLOR)
- LED'S MUST HAVE A MAXIMUM HEIGHT OF 1.4mm AND A MINIMUM HEIGHT OF 0.7mm
- PLATE GROUND PAD WITH EMERSON SILVER OR GOLD.
- RECOMMENDED DRILL SIZE FOR 0.37 $\phi$  FINISHED PTH IS 0.457 $\phi$  (#77 DRILL)
- RECOMMENDED ANNULAR RING AROUND 0.37 $\phi$  FINISHED PTH IS 0.73 $\phi$

PORT 1		PORT 2	
SIGNAL	SIGNAL PIN	SIGNAL	SIGNAL PIN
SIGNAL GND	A1	SIGNAL GND	B1
RX 0-	A2	TX 0+	B2
RX 0-	A3	TX 0-	B3
SIGNAL GND	A4	SIGNAL GND	B4
RX 1+	A5	TX 1+	B5
RX 1-	A6	TX 1-	B6
SIGNAL GND	A7	SIGNAL GND	B7
RX 2+	A8	TX 2+	B8
RX 2-	A9	TX 2-	B9
SIGNAL GND	A10	SIGNAL GND	B10
RX 3+	A11	TX 3+	B11
RX 3-	A12	TX 3-	B12
SIGNAL GND	A13	SIGNAL GND	B13

**PIN ASSIGNMENT**

<b>SEE SHEET 1</b> EC NO: UCP2012-1063 DRAWNS: B061EL 2011/09/14 CHKD: APPROVED: MBANKAKIS 2011/10/20 REV DESCRIPTION	QUALITY SYMBOLS	GENERAL TOLERANCES (UNLESS SPECIFIED)	DIMENSION STYLE	SCALE	DESIGN UNITS	THIRD ANGLE PROJECTION
	$\nabla=0$	4 PLACES ± mm ± INCH	MM ONLY	2:1	METRIC	
	$\nabla=0$	3 PLACES ± 0.25 ± 0.010				
	$\nabla=0$	1 PLACE ± 0.25 ± 0.010				
		ANGULAR ±1/2°				
	DRAFT WHERE APPLICABLE MUST REMAIN WITHIN DIMENSIONS		MATERIAL NO.	DOCUMENT NO.	TITLE	
			75758-010*	SD-75758-010	IPASS STACKED 26/26 CIRCUIT CONNECTOR	
					MOLEX INCORPORATED	
					SHEET NO. 3 OF 3	