



Chipsmall Limited consists of a professional team with an average of over 10 year of expertise in the distribution of electronic components. Based in Hongkong, we have already established firm and mutual-benefit business relationships with customers from,Europe,America and south Asia,supplying obsolete and hard-to-find components to meet their specific needs.

With the principle of “Quality Parts,Customers Priority,Honest Operation,and Considerate Service”,our business mainly focus on the distribution of electronic components. Line cards we deal with include Microchip,ALPS,ROHM,Xilinx,Pulse,ON,Everlight and Freescale. Main products comprise IC,Modules,Potentiometer,IC Socket,Relay,Connector.Our parts cover such applications as commercial,industrial, and automotives areas.

We are looking forward to setting up business relationship with you and hope to provide you with the best service and solution. Let us make a better world for our industry!



## Contact us

Tel: +86-755-8981 8866 Fax: +86-755-8427 6832

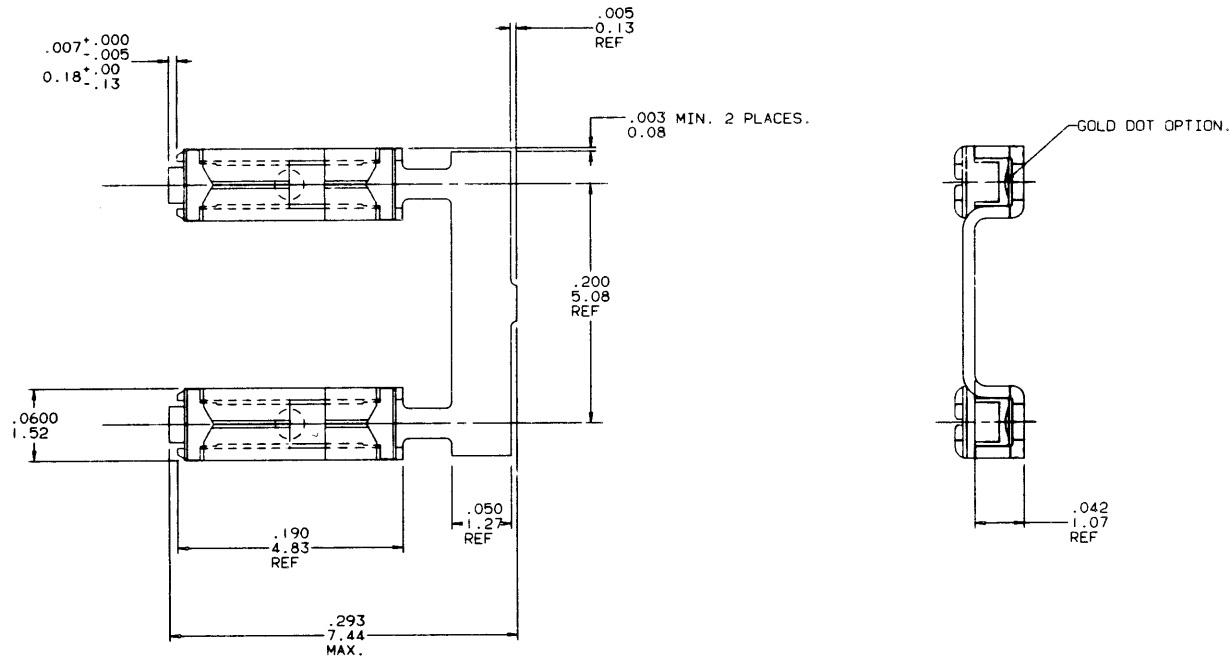
Email & Skype: info@chipsmall.com Web: www.chipsmall.com

Address: A1208, Overseas Decoration Building, #122 Zhenhua RD., Futian, Shenzhen, China



PRODUCT NO	TERMINAL BODY	TERMINAL SPRING
75800-001	1/4 HARD BRASS WITH GOLD FLASH AND 40 $\mu$ /1.02 $\mu$ Au IN CONTACT AREA.	.0048/.122 THICK HEAT TREATED BE-CU WITH GOLD FLASH.
75800-002	1/4 HARD BRASS WITH TIN-LEAD PLATING.	.0048/.122 THICK HEAT TREATED BE-CU WITH TIN PLATING.
75800-003	O B S O L E T E	
75800-004	1/4 HARD Cu Ni WITH .001/.03 MIN THICK GOLD DOT.	.0048/.122 THICK HEAT TREATED BE-CU WITH GOLD FLASH.

REVISIONS			
REV	DESCRIPTION	BY	DATE
A	RELEASE-REDRAW	JGS	5/6/91



SHEET INDEX		ISSUE A											CUSTOMER COPY	<b>DuPont Electronics</b>			
SH NO 1													CODE IDENT 22526	DATE 5/6/91		TITLE MINI JUMP TERMINAL .200 C.C.	
MODEL I		DO NOT SCALE DRAWING		TOLERANCE UNLESS OTHERWISE NOTED		INCH/MM		MATERIAL		DR J. SHREINER		DATE 5/6/91		ENGR M. HAHN		5/6/91	
THIRD ANGLE PROJECTION		LINEAR		.001/.005 / .001/.13		FINISH		ENGR M. HAHN		5/6/91		SCALE 20/1		SIZE D		DWG NO 75800	
FABULATION SHEETS REQUIRED YES/NO		INCH MM		ANGLES 0° ± 2°		APPD M. HAHN		5/6/91		SCALE 20/1		SIZE D		DWG NO 75800		SHEET 1 OF 1	

NOTE: This print is the property of and contains proprietary designs of THE DUPONT COMPANY. No part of the design shown on this print may be used in any way without the written consent of DUPONT ELECTRONICS, New Cumberland, PA.