



Chipsmall Limited consists of a professional team with an average of over 10 year of expertise in the distribution of electronic components. Based in Hongkong, we have already established firm and mutual-benefit business relationships with customers from,Europe,America and south Asia,supplying obsolete and hard-to-find components to meet their specific needs.

With the principle of “Quality Parts,Customers Priority,Honest Operation,and Considerate Service”,our business mainly focus on the distribution of electronic components. Line cards we deal with include Microchip,ALPS,ROHM,Xilinx,Pulse,ON,Everlight and Freescale. Main products comprise IC,Modules,Potentiometer,IC Socket,Relay,Connector.Our parts cover such applications as commercial,industrial, and automotives areas.

We are looking forward to setting up business relationship with you and hope to provide you with the best service and solution. Let us make a better world for our industry!



Contact us

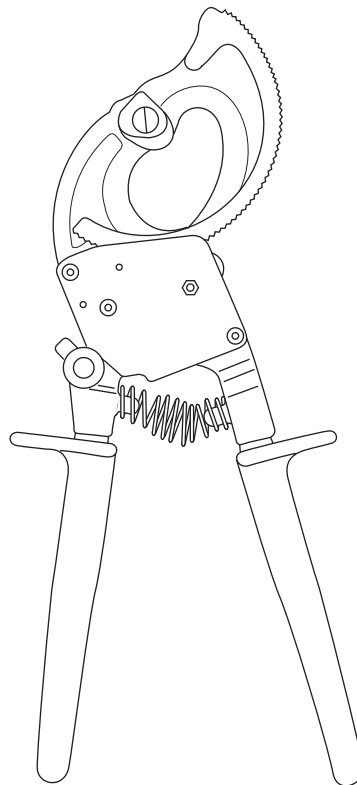
Tel: +86-755-8981 8866 Fax: +86-755-8427 6832

Email & Skype: info@chipsmall.com Web: www.chipsmall.com

Address: A1208, Overseas Decoration Building, #122 Zhenhua RD., Futian, Shenzhen, China



SERVICE BULLETIN




759 Ratchet Cable Cutter

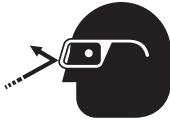



Read and understand all of the instructions and safety information in this manual before operating or servicing this tool.

IMPORTANT SAFETY INFORMATION


	<p>SAFETY ALERT SYMBOL</p>
<p>This symbol is used to call your attention to hazards or unsafe practices which could result in an injury or property damage. The signal word, defined below, indicates the severity of the hazard. The message after the signal word provides information for preventing or avoiding the hazard.</p>	
<p>⚠ DANGER</p>	
<p>Immediate hazards which, if not avoided, WILL result in severe injury or death.</p>	
<p>⚠ WARNING</p>	
<p>Hazards which, if not avoided, COULD result in severe injury or death.</p>	
<p>⚠ CAUTION</p>	
<p>Hazards or unsafe practices which, if not avoided, MAY result in injury or property damage.</p>	

	<p>⚠ WARNING</p>
	<p>Electric shock hazard: This tool is not insulated. Contact with live circuits could result in severe injury or death.</p>

	<p>⚠ WARNING</p>
	<p>Wear eye protection when operating or servicing this tool. Failure to wear eye protection could result in serious eye injury from flying debris.</p>

	<p>⚠ WARNING</p>
	<p>Keep hands and fingers clear of blades. Failure to observe this warning could result in severe injury or death.</p>

Note: Keep all decals clean and legible, and replace when necessary.

	<p>⚠ WARNING</p>
	<p>Read and understand all of the instructions and safety information in this manual before operating or servicing this tool. Failure to observe this warning could result in severe injury or death.</p>

All specifications are nominal and may change as design improvements occur. Greenlee Textron Inc. shall not be liable for damages resulting from misapplication or misuse of its products.

KEEP THIS MANUAL

Specifications

Length: 10-1/2" (266 mm)

Weight: 1.4 lb (0.6 kg)

Capacity

	Maximum	Frequent Use
Copper	500 kcmil (MCM) (240 mm ²)	400 kcmil (MCM) (185 mm ²)
Aluminum	750 kcmil (MCM) (400 mm ²)	600 kcmil (MCM) (300 mm ²)
Communications Cable	1-1/8" diameter (28 mm ²)	—

IMPORTANT

Do not cut ACSR or steel.

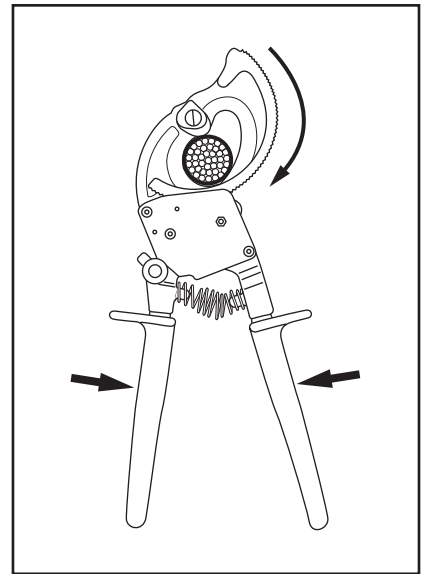
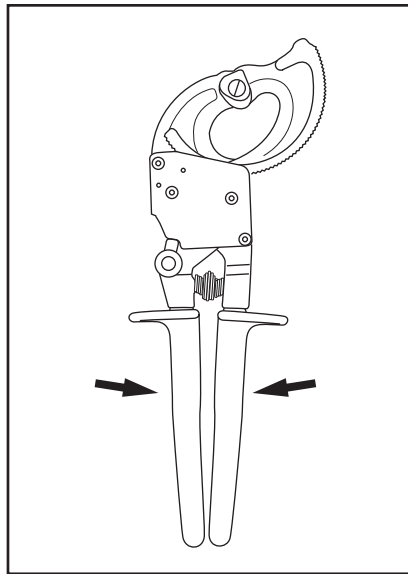
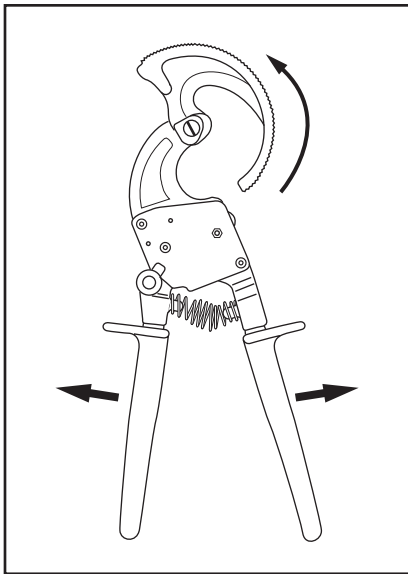
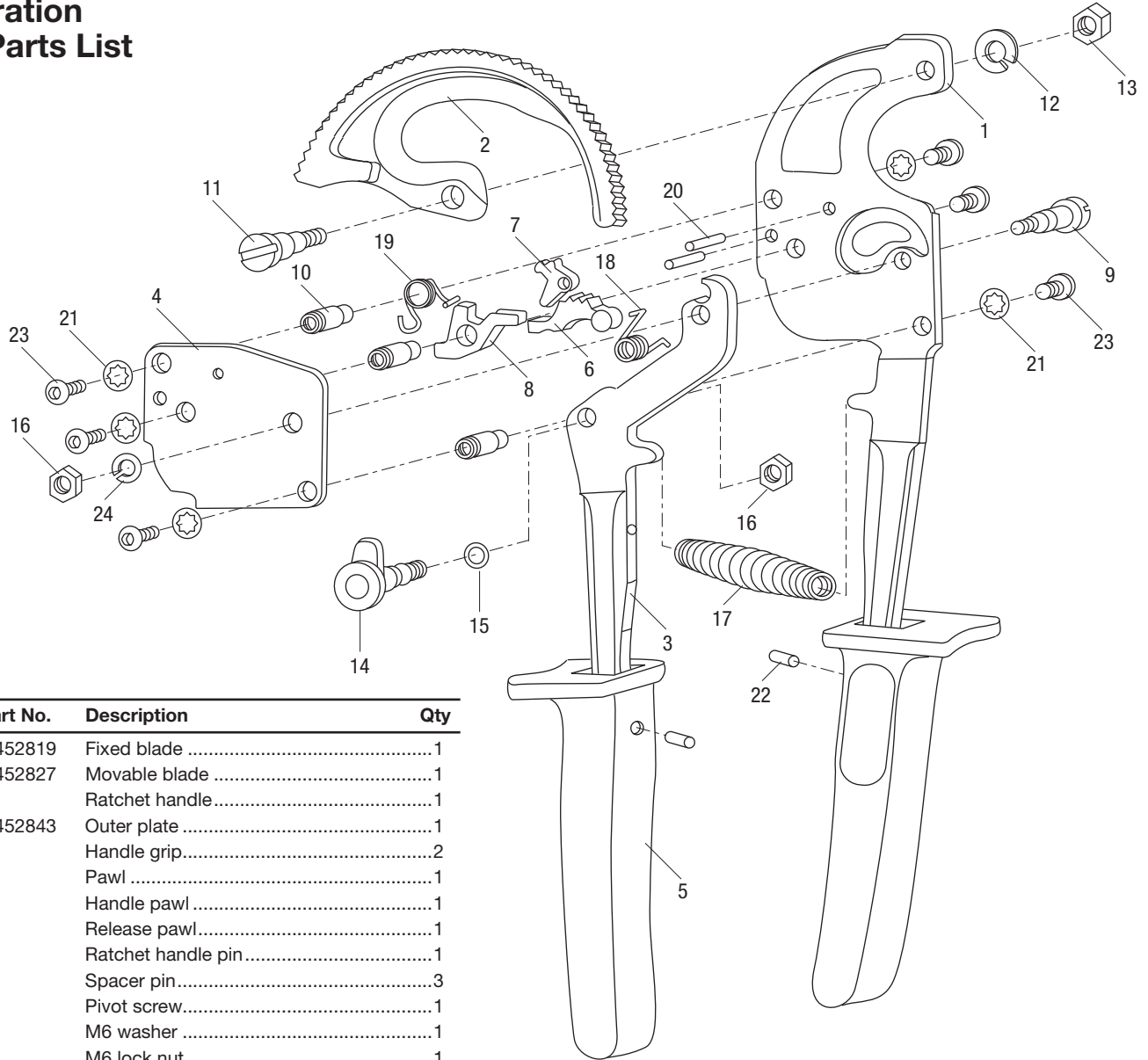


Illustration and Parts List



Key	Part No.	Description	Qty
1	50452819	Fixed blade	1
2	50452827	Movable blade	1
3		Ratchet handle.....	1
4	50452843	Outer plate	1
5		Handle grip.....	2
6		Pawl	1
7		Handle pawl	1
8		Release pawl.....	1
9		Ratchet handle pin.....	1
10		Spacer pin.....	3
11		Pivot screw.....	1
12		M6 washer	1
13		M6 lock nut	1
14		Ratchet lever knob.....	1
15		O-ring.....	1
16		M4 lock nut	2
17	50452975	Coil spring.....	1
18		Pawl spring	1
19		Ratchet pawl spring	1
20		Ratchet pawl set pin	2
21		M4 lock tooth washer	6
22		Handle grip set plug.....	2
23		Socket head set screw.....	6
24		M4 spring washer	1

Repair Kits (quantities as listed above)

- 50453106 Pawl kit (includes items 6–8, 18–20)
- 50453114 Pivot screw kit (includes items 9, 11–13, 16, 24)
- 50453122 Set screw kit (includes items 10, 21, 23)
- 50453130 Ratchet lever knob kit (includes items 14–16)
- 50453149 Handle with grip and plug kit (includes one each of items 3, 5, 17, 22)



USA 800-435-0786 Fax: 800-451-2632
 815-397-7070 Fax: 815-397-1865
Canada 800-435-0786 Fax: 800-524-2853
International +1-815-397-7070 Fax: +1-815-397-9247

4455 Boeing Drive • Rockford, IL 61109-2988 • USA • 815-397-7070
 An ISO 9001 Company • Greenlee Textron Inc. is a subsidiary of Textron Inc.
www.greenlee.com