



Chipsmall Limited consists of a professional team with an average of over 10 year of expertise in the distribution of electronic components. Based in Hongkong, we have already established firm and mutual-benefit business relationships with customers from,Europe,America and south Asia,supplying obsolete and hard-to-find components to meet their specific needs.

With the principle of “Quality Parts,Customers Priority,Honest Operation,and Considerate Service”,our business mainly focus on the distribution of electronic components. Line cards we deal with include Microchip,ALPS,ROHM,Xilinx,Pulse,ON,Everlight and Freescale. Main products comprise IC,Modules,Potentiometer,IC Socket,Relay,Connector.Our parts cover such applications as commercial,industrial, and automotives areas.

We are looking forward to setting up business relationship with you and hope to provide you with the best service and solution. Let us make a better world for our industry!



Contact us

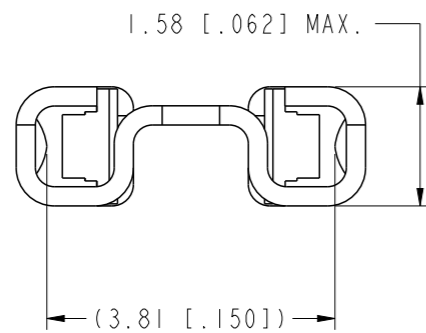
Tel: +86-755-8981 8866 Fax: +86-755-8427 6832

Email & Skype: info@chipsmall.com Web: www.chipsmall.com

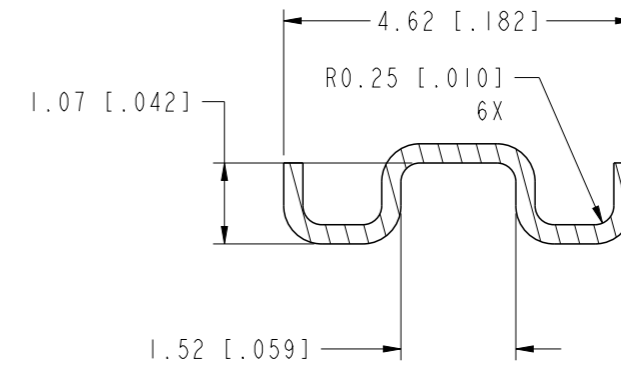
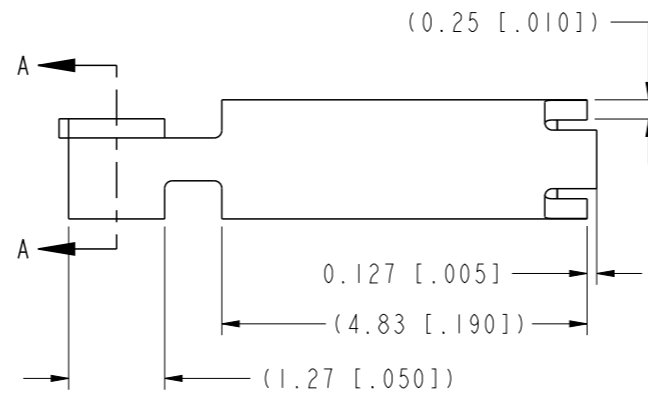
Address: A1208, Overseas Decoration Building, #122 Zhenhua RD., Futian, Shenzhen, China



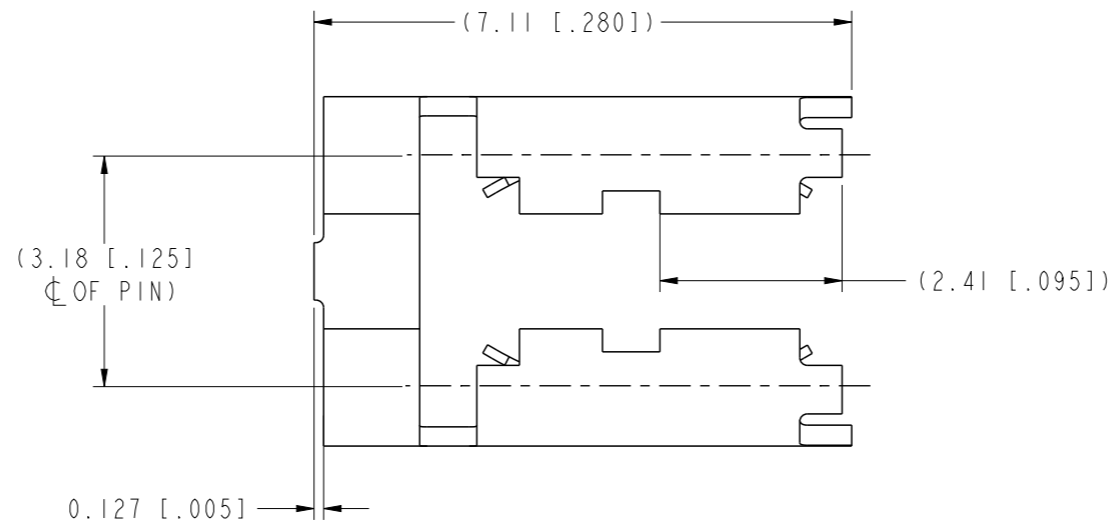
PRODUCT NUMBER	TERMINAL BODY	TERMINAL SPRING
76113-001	1/4 HARD BRASS w/40u"/1.02u Au OR GXT IN CONTACT AREA	.0048/.122 THK. HEAT TREATED Be-Cu w/ GOLD FLASH
76113-002	1/2 HARD BRASS W/TIN-LEAD PLATING	.0048/.122 THK. HEAT TREATED Be-Cu w/ TIN PLTG.
76113-003	OBSOLETE	OBSOLETE
76113-004	1/4 HARD Cu Ni w .001/.03 MIN. GOLD DOT	0.0048/.122 THK. HEAT TREATED Be-Cu w/ GOLD FLASH
76113-101	1/4 HARD BRASS w/40u"/1.02u Au OR GXT IN CONTACT AREA	.0048/.122 THK. HEAT TREATED Be-Cu w/ GOLD FLASH
76113-102	1/4 HARD BRASS w/40u"/1.02u Au OR GXT IN CONTACT AREA, GOLD FLASH IN OTHER AREA	.0048/.122 THK. HEAT TREATED Be-Cu w/ GOLD FLASH
76113-103	1/4 HARD BRASS w/GOLD FLASH	.0048/.122 THK. HEAT TREATED Be-Cu w/ GOLD FLASH



DISTANCE BETWEEN GOLD DOTS WHEN APPLICABLE



SECTION A-A



NOTES:

1. ADD "LF" SUFFIX AT THE END OF PART NUMBER FOR LEAD FREE OPTION
2. THIS PRODUCT MEETS EUROPEAN UNION DIRECTIVES AND OTHER COUNTRY REGULATION AS DESCRIBED IN GS-22-008
3. THE LEAD FREE PLATING FOR -002LF WILL BE TERMINAL BODY: 1/2 HARD BRASS W/PURE TIN PLATING TERMINAL SPRING: .0048/.122 THK THREAD Be-Cu w/PURE TIN

spec ref	dr	Yong Huang	2010/10/27	projection	INCH/MM	size	A3	scale	10:1
tolerance std	eng	Zheng-Kun Hu	2015/03/04			ecn no	ELX-N-19865-1	rel level	Released
TOLERANCES UNLESS OTHERWISE SPECIFIED									
surface	3.2	linear	0.X	±0.3		.125/3.18 C.C.	dwg no	76113	rev
			0.XX	±0.13					
			0.XXX	±0.013					
	angular	0°	±2°	www.fci.com	cat. no.	-	Product - Customer Drw	sheet 1 of 2	

1

2

3

4

A

B

C

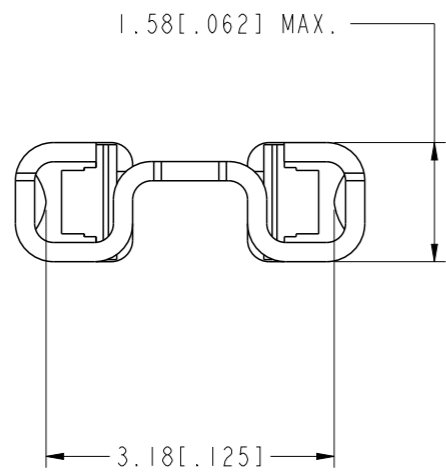
D

A

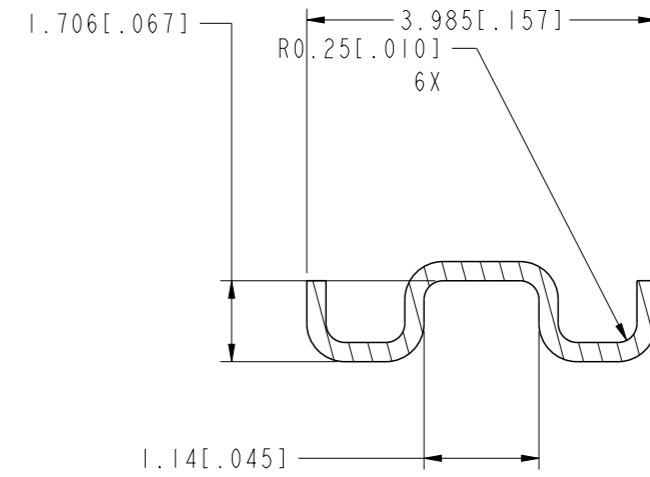
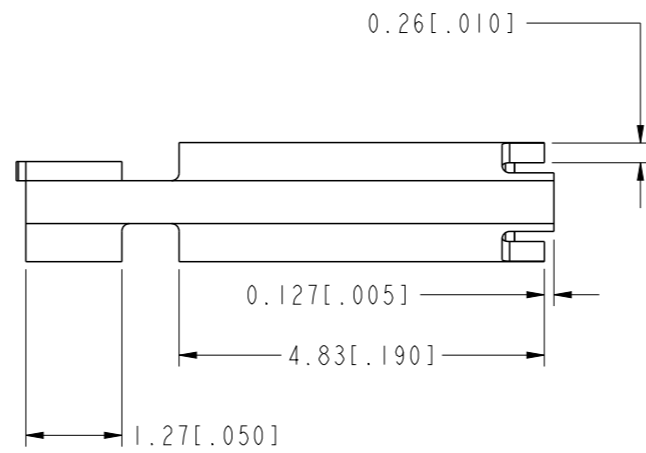
B

C

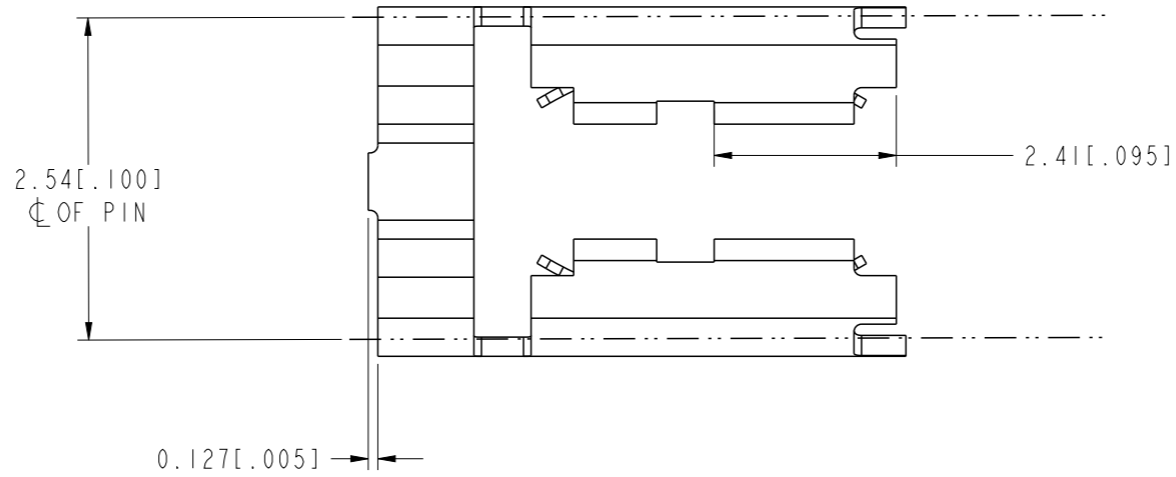
D



DISTANCE BETWEEN GOLD
DOTS WHEN APPLICABLE



SECTION A-A



Copyright FCI.

spec ref		dr	Yong Huang	2010/10/27	projection	INCH / MM	size	A3	scale	10:1	
tolerance std		eng	Zheng-Kun Hu	2015/03/04			ecn no		ELX-N-19865-1		
TOLERANCES UNLESS OTHERWISE SPECIFIED		chr	-	-			product family		MNI-JUMP		rel level
surface	3.2	linear	0.X	±0.3		.125/3.18 C.C. JUMPER	dwg no 76113	rev F	cat. no.		-
			0.XX	±0.13					Product - Customer Drw		sheet 2 of 2
			0.XXX	±0.013					PDS: Rev :F		STATUS:Released
		angular	0°	±2°	www.fci.com						

2

3

4