



Chipsmall Limited consists of a professional team with an average of over 10 year of expertise in the distribution of electronic components. Based in Hongkong, we have already established firm and mutual-benefit business relationships with customers from,Europe,America and south Asia,supplying obsolete and hard-to-find components to meet their specific needs.

With the principle of “Quality Parts,Customers Priority,Honest Operation,and Considerate Service”,our business mainly focus on the distribution of electronic components. Line cards we deal with include Microchip,ALPS,ROHM,Xilinx,Pulse,ON,Everlight and Freescale. Main products comprise IC,Modules,Potentiometer,IC Socket,Relay,Connector.Our parts cover such applications as commercial,industrial, and automotives areas.

We are looking forward to setting up business relationship with you and hope to provide you with the best service and solution. Let us make a better world for our industry!



Contact us

Tel: +86-755-8981 8866 Fax: +86-755-8427 6832

Email & Skype: info@chipsmall.com Web: www.chipsmall.com

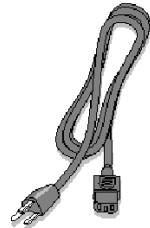
Address: A1208, Overseas Decoration Building, #122 Zhenhua RD., Futian, Shenzhen, China



eZdsp™ for the TMS320F2812

Quick Start Guide

The TMS320F2812 eZdsp contains:



AC Power Cord

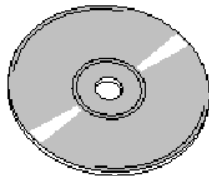


+5V Universal Power Supply

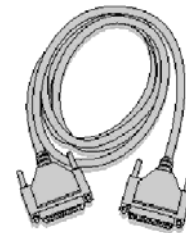
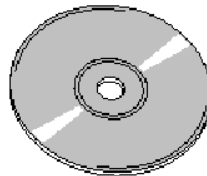


eZdsp Board

TMS320C2000 Code Composer Studio CD ROM



TMS320F2812 eZdsp Driver CD ROM



Printer Cable

System Hardware and Software Requirements

These operating platform requirements are necessary to install the Code Composer Studio (CCS) integrated Development Environment and support the printer port. The requirements for the operating platform are:

Minimum Configuration

- 233 Mhz. or faster Pentium or compatible
- 600MB of free hard disk space
- Microsoft Windows 98SE, ME, N5-4 (SP 6 or higher) 2000(SP1 or higher), or XP
- 64MB of RAM
- SVGA (640x480) color display
- Local CD-ROM Drive

Recommended

- 128MB of RAM
- SVGA(1024 x 768) color display
- 500 Mhz. or faster Pentium or compatible

Installing Composer Studio for Windows 98SE/ME/NT4/2000/XP

Note: For Windows NT4/2000 and XP you must install Code Composer Studio (CCS) using Administrator privileges. To run CCS on these systems requires write permission on the registry. If installing hardware, follow the instructions provided with the hardware.

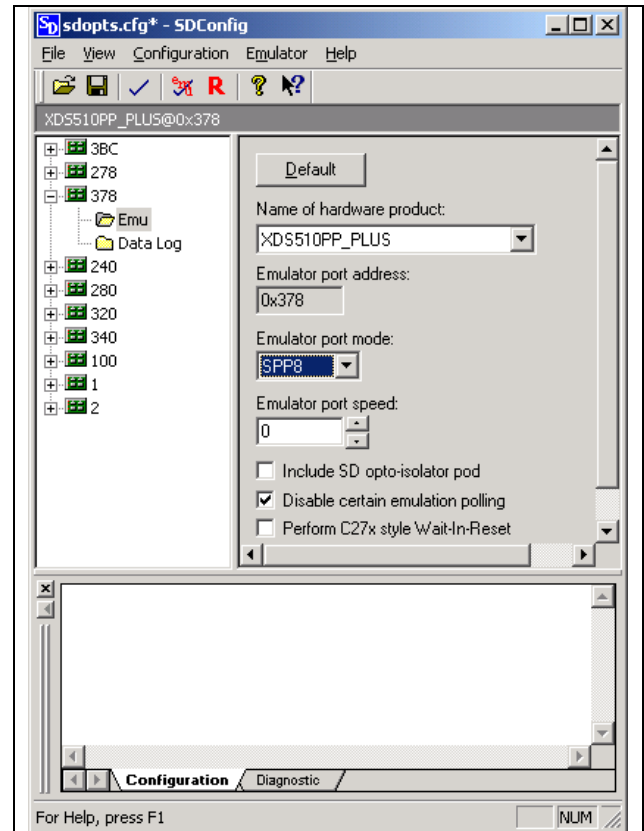
Also prior to installing the Code Composer Studio make sure the Virus checker on your system is turned off or disabled. It may be turned on or enabled after installing. This is a 2CD install so please follow directions on selection of CDs.

Debugger Setup Checklist

1. Reboot your computer and enter the BIOS setup area. Set the LPT1 mode to ECP+EPP, ECP, EPP, or bi-directional. You can skip this step if you have previously setup your printer port and know the port address.
2. Do NOT connect to any hardware at this time.
3. Insert the Code Composer Studio installation CD into the CD-ROM Drive. An install screen should appear; if not, go to Windows Explorer and run setup.exe from the CD-ROM.
4. Choose the option to install Code Composer. Respond to the dialog boxes as the installation program runs. Reboot your computer if prompted to do so.
5. Insert the eZdsp CD ROM and install the drivers. The install path for the drivers must match your Code Composer install setup path.
6. Connect up your DSK hardware in the following order:
 - a. Plug printer port cable into the PC
 - b. Plug printer port cable into the eZdsp
 - c. Plug AC power cord into power supply provided
 - d. Plug AC power cord into AC power outlet
 - e. Plug power supply into the eZdsp
7. Select the SdConfig from your desktop.



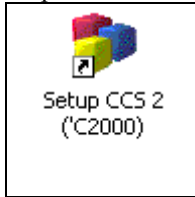
8. Double click on the emulator ID (port address) that matches the port address from step 1. If you did not get printer port information from step 1 above then do the following:
 - a. Remove power from the eZdsp
 - b. Select Configuration->Ports Available->Printer
 - c. This will provide a list of printer ports available on your PC and the default printer port mode.
 - d. Now select the appropriate emulator ID and verify/set your configuration as required.
 - e. Reconnect power to your eZdsp.
9. If changes are made in the configuration, select “**File->Save**” before continuing. Following is an example screen for port 0x378, and the default settings. The eZdsp setup is compatible with the XDS510PP PLUS emulator.



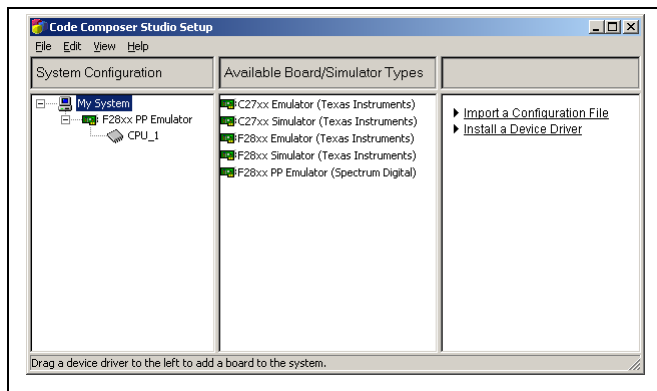
10. You can reset your eZdsp by selecting the large red “R” icon in the tool bar. Once your eZdsp is reset you can proceed with configuring Code Composer.

Setting Up Code Composer

1. Select the Code Composer Setup icon from the desktop.



2. From CC Setup import the configuration for the F28xx PP Emulator. This is a default setup for the TMS320F2812 PP Emulator connected on port 0x378. You can get to this setup quickly by setting the filters to Family > F28xx and Platform > PP Emulator. You may want to clear the clear system configuration before importing the F28xx PP Emulator configuration. Now import the configuration. When complete your setup should resemble the following.



3. If you want to change the configuration of your setup simply right mouse click on the F28xx PP Emulator under **System Configuration** then select **Properties**. You can modify the individual properties for your setup. In general the only property that may need to be modified is your **Board Properties**. This setting must match the **Emulator port address** setup by **SdConfig**.

4. Start Code Composer by clicking on the CCS 2 (C2000) icon.



Trouble Shooting

If you have problems try the following

1. The most common problem at this point is the **mode** parameter selected in **SdConfig**. It may not match the hardware setup of the parallel port on your computer. Go back to **SdConfig** and adjust your settings until your setup will perform and emulator reset and emulator test.
2. Reset the computer and enter the BIOS setup. Configure the parallel port for ECP, EPP, EPP 1.9 or bi-directional. ECP or EPP will provided the best performance. Let the computer boot and return to **SdConfig** to test your settings.
3. This is a 2 CD install, attention to the correct order is important.