



Chipsmall Limited consists of a professional team with an average of over 10 year of expertise in the distribution of electronic components. Based in Hongkong, we have already established firm and mutual-benefit business relationships with customers from,Europe,America and south Asia,supplying obsolete and hard-to-find components to meet their specific needs.

With the principle of “Quality Parts,Customers Priority,Honest Operation,and Considerate Service”,our business mainly focus on the distribution of electronic components. Line cards we deal with include Microchip,ALPS,ROHM,Xilinx,Pulse,ON,Everlight and Freescale. Main products comprise IC,Modules,Potentiometer,IC Socket,Relay,Connector.Our parts cover such applications as commercial,industrial, and automotives areas.

We are looking forward to setting up business relationship with you and hope to provide you with the best service and solution. Let us make a better world for our industry!



## Contact us

Tel: +86-755-8981 8866 Fax: +86-755-8427 6832

Email & Skype: info@chipsmall.com Web: www.chipsmall.com

Address: A1208, Overseas Decoration Building, #122 Zhenhua RD., Futian, Shenzhen, China



# Fixed Attenuators

DC-18 GHz

## Type N High Power Bi-Directional Fixed Coaxial Attenuators

- High Power
- 3, 6, 10, 20 and 30 dB at 150 W
- 10, 20, 30, 40, 50 and 60 dB at 100 W



### Specifications

Type N (M/F), DC to 6 GHz, 150 W

FREQUENCY RANGE (GHz)	MODEL	ATTENUATION (dB)			POWER INPUT		VSWR (max.)	WEIGHT (max.)	
		NOMINAL	DEVIATION		AVERAGE* (W max.)	PEAK (kW max.)		lbs.	kg.
			DC-2	2-6					
DC-6	769A-3	3	±0.4	±0.75	150	3	1.35	3.3	1.5
	769A-6	6	±0.4	±0.75	150	3	1.35	3.3	1.5
	769A-10	10	±0.4	±0.75	150	3	1.35	3.3	1.5
	769A-20	20	±0.5	±1.00	150	3	1.35	3.3	1.5
	769A-30	30	±0.5	±1.00	150	3	1.35	3.3	1.5

\* Power ratings for horizontal operation at +25°C derate linearly to 5 W at +125°C

**NOTE:**

Temperature Coefficient: 0.0006 dB/dB/°C; Power Coefficient: 0.0005 dB/dB/W

Type N (M/F), DC to 18 GHz, 100 W

FREQUENCY RANGE (GHz)	MODEL	ATTENUATION (dB)			POWER INPUT		VSWR (max.)			WEIGHT (max.)	
		NOMINAL	DEVIATION	AVERAGE* (W max.)	PEAK (kW max.)	DC - 8	8 - 12.4	12.4 - 18	lbs.	kg.	
DC - 18	770-10	10	±1.2	100	1	1.25	1.30	1.40	3.0	1.36	
	770-20	20	±1.4	100	1	1.25	1.30	1.40	3.0	1.36	
	770-30	30	±1.4	100	1	1.25	1.30	1.40	3.0	1.36	
	770-40	40	±2.5	100	1	1.25	1.30	1.40	1.75	0.7	
	770-50	50	±3.0	100	1	1.25	1.30	1.40	1.75	0.7	
	770-60	60	±3.5	100	1	1.25	1.30	1.40	1.75	0.7	

\* Power ratings for horizontal operation at +25°C derate linearly to 10 W at +125°C

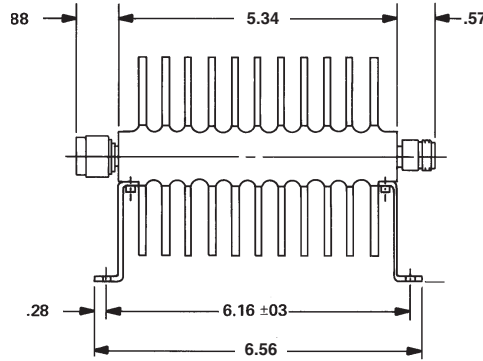
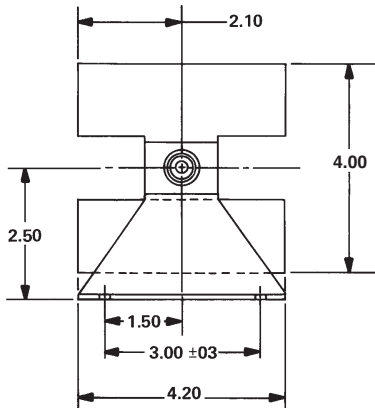
**NOTE:**

Temperature Coefficient: 0.0006 dB/dB/°C; Power Coefficient: 0.0005 dB/dB/W

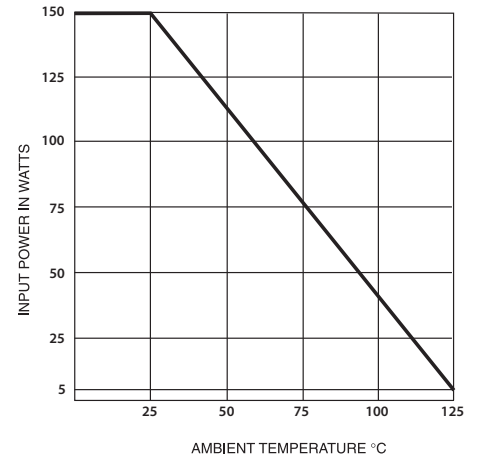


# Fixed Attenuators

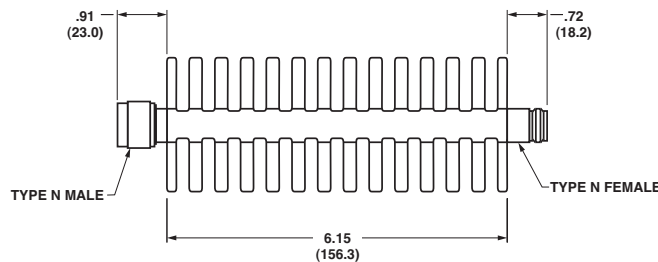
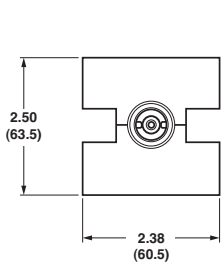
## Outline Drawings



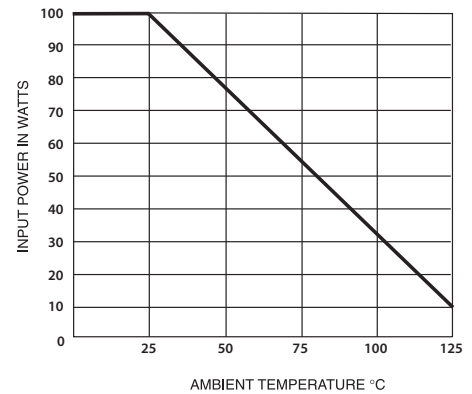
Model 769A Series



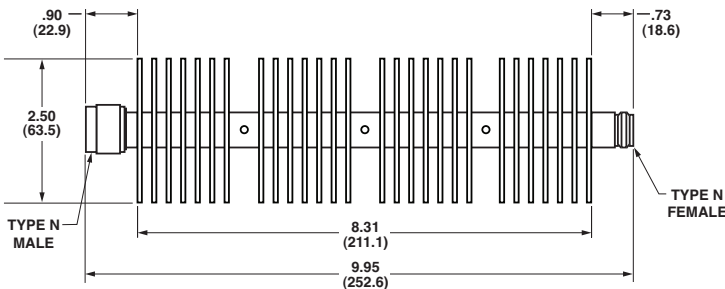
Derating Curve, 125° C - Horizontal Operation  
769A Series



Model 770 -10, -20, -30



Derating Curve, Horizontal Operation  
770 Series



Model 770 -40, -50, -60

Dimensions in inches (mm in parentheses), unless otherwise specified.

