



Chipsmall Limited consists of a professional team with an average of over 10 year of expertise in the distribution of electronic components. Based in Hongkong, we have already established firm and mutual-benefit business relationships with customers from,Europe,America and south Asia,supplying obsolete and hard-to-find components to meet their specific needs.

With the principle of “Quality Parts,Customers Priority,Honest Operation,and Considerate Service”,our business mainly focus on the distribution of electronic components. Line cards we deal with include Microchip,ALPS,ROHM,Xilinx,Pulse,ON,Everlight and Freescale. Main products comprise IC,Modules,Potentiometer,IC Socket,Relay,Connector.Our parts cover such applications as commercial,industrial, and automotives areas.

We are looking forward to setting up business relationship with you and hope to provide you with the best service and solution. Let us make a better world for our industry!



Contact us

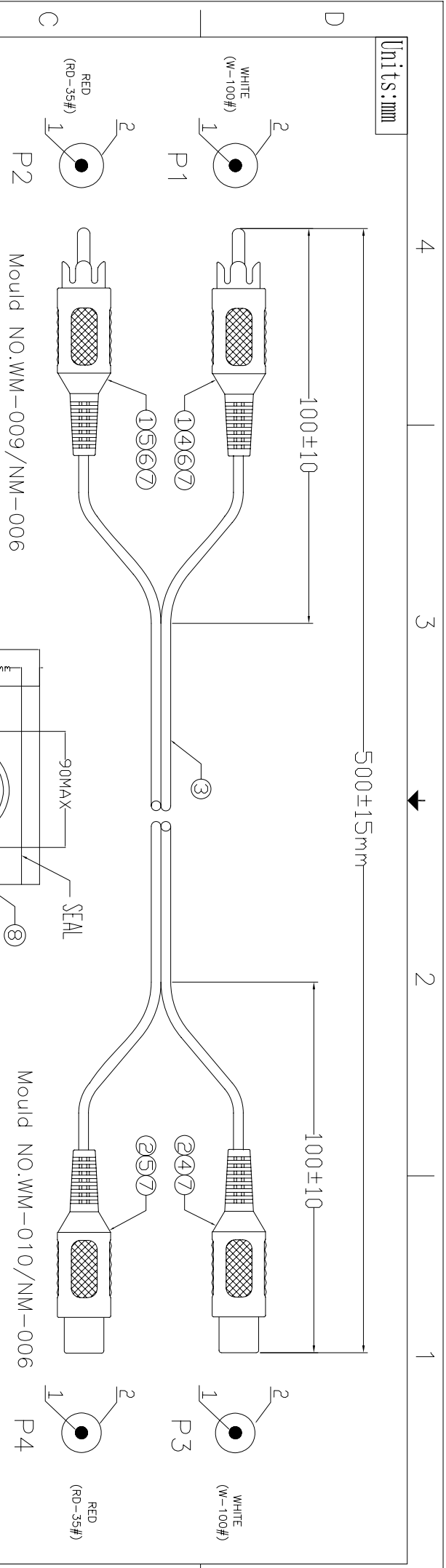
Tel: +86-755-8981 8866 Fax: +86-755-8427 6832

Email & Skype: info@chipsmall.com Web: www.chipsmall.com

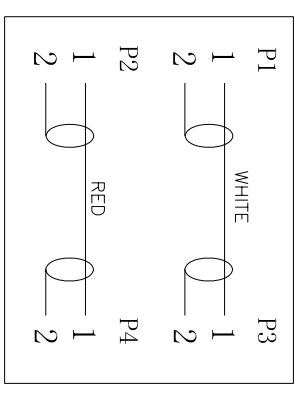
Address: A1208, Overseas Decoration Building, #122 Zhenhua RD., Futian, Shenzhen, China



Units: mm

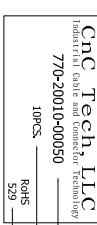


PIN ASSIGNMENT:

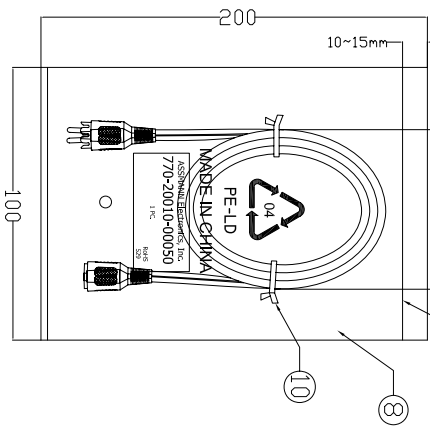


Electrical test:
 1. 100% short, open, miswire test
 2. Conduct resistance: 2 Ohm(max)
 3. Insulation resistance: 5Mohm(min)
 4. dielectric test: DC 300V

NOTE:
 1. 小PE袋/大PE袋对应料号, 包袋数量及时间印刷样式:



2. 外箱两个侧面ITEM NO后面各贴一个35*22mm ROHS标签.

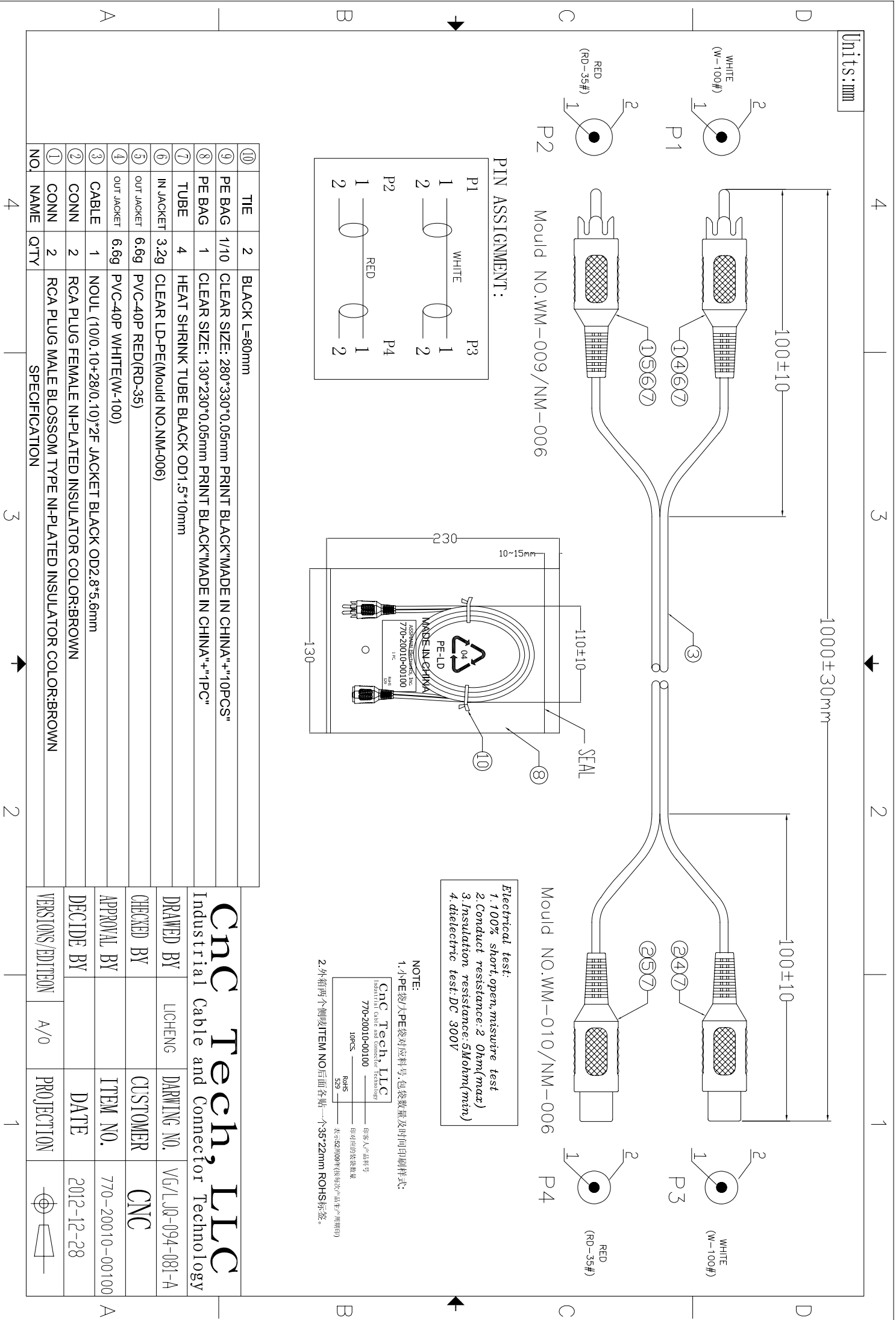


⑩	TIE	2	BLACK L=80mm
⑨	PE BAG	1/10	CLEAR SIZE: 230*300*0.05mm PRINT BLACK"MADE IN CHINA"+"10PCS"
⑧	PE BAG	1	CLEAR SIZE: 100*200*0.05mm PRINT BLACK"MADE IN CHINA"+"1PC"
⑦	TUBE	4	HEAT SHRINK TUBE BLACK OD1.5*10mm
⑥	IN JACKET	3.2g	CLEAR LD-PE(Mould NO.NM-006)
⑤	OUT JACKET	6.6g	PVC-40P RED(RD-35)
④	OUT JACKET	6.6g	PVC-40P WHITE(W-100)
③	CABLE	1	NOUL (10/0.10+28/0.10)*2F JACKET BLACK OD2.8*5.6mm
②	CONN	2	RCA PLUG FEMALE NI-PLATED INSULATOR COLOR:BROWN
①	CONN	2	RCA PLUG MALE BLOSSOM TYPE NI-PLATED INSULATOR COLOR:BROWN
NO.	NAME	QTTY	SPECIFICATION
		4	

Cnc Tech, LLC
 Industrial Cable and Connector Technology

DRAWN BY	LICHENG	DRAWING NO.	VG/LJQ-094-081
CHECKED BY		CUSTOMER	CNC
APPROVAL BY		ITEM NO.	770-20010-00050
DECIDE BY		DATE	2012-12-28
VERSIONS/EDITION	A/0	PROJECTION	

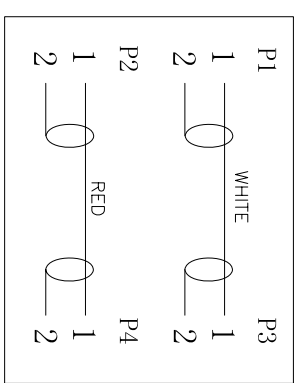
Units: mm



Mould NO. WM-009 / NM-006

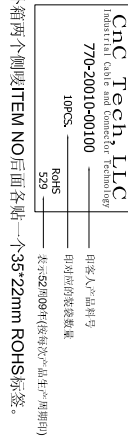
Mould NO. WM-010 / NM-006

PIN ASSIGNMENT:



Electrical test:
 1. 100% short, open, miswire test
 2. Conduct resistance: 2 Ohm(max)
 3. Insulation resistance: 5Mohm(min)
 4. dielectric test: DC 300V

NOTE:
 1. 小PE袋大PE袋对应料号, 包袋数量及时间印刷样式:

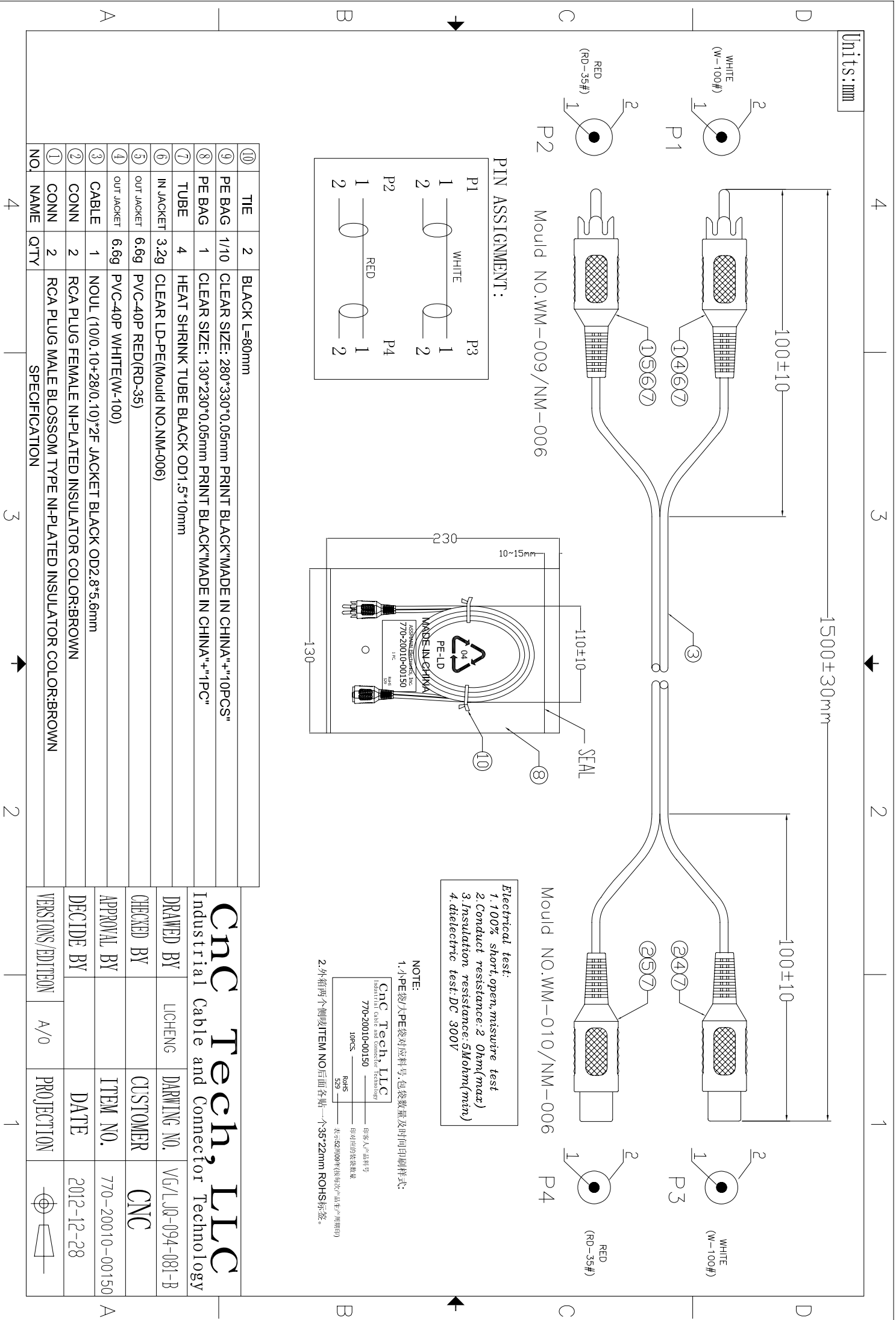


2. 外箱两个侧面ITEM NO后面各贴一个35*22mm ROHS标签.

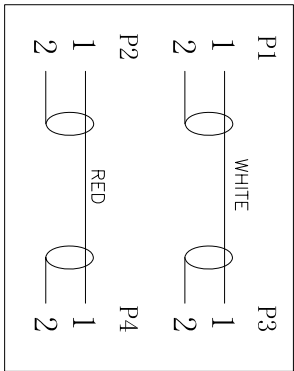
⑩	TIE	2	BLACK L=80mm
⑨	PE BAG	1/10	CLEAR SIZE: 280*330*0.05mm PRINT BLACK"MADE IN CHINA"+"10PCS"
⑧	PE BAG	1	CLEAR SIZE: 130*230*0.05mm PRINT BLACK"MADE IN CHINA"+"1PC"
⑦	TUBE	4	HEAT SHRINK TUBE BLACK OD1.5*10mm
⑥	IN JACKET	3.2g	CLEAR LD-PE(Mould NO. NM-006)
⑤	OUT JACKET	6.6g	PVC-40P RED(RD-35)
④	OUT JACKET	6.6g	PVC-40P WHITE(W-100)
③	CABLE	1	NOUL (10/0.10+28/0.10)*2F JACKET BLACK OD2.8*5.6mm
②	CONN	2	RCA PLUG FEMALE NI-PLATED INSULATOR COLOR:BROWN
①	CONN	2	RCA PLUG MALE BLOSSOM TYPE NI-PLATED INSULATOR COLOR:BROWN
NO.	NAME	QTTY	SPECIFICATION

CNC Tech, LLC			
Industrial Cable and Connector Technology			
DRAWN BY	LICHENG	DRAWING NO.	VG/LJQ-094-081-A
CHECKED BY		CUSTOMER	CNC
APPROVAL BY		ITEM NO.	770-20010-00100
DECIDE BY		DATE	2012-12-28
VERSIONS/EDITION	A/0	PROJECTION	

Units: mm



PIN ASSIGNMENT:

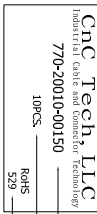


Mould NO. WM-009 / NM-006

Mould NO. WM-010 / NM-006

Electrical test:
 1. 100% short, open, miswire test
 2. Conduct resistance: 2 Ohm(max)
 3. Insulation resistance: 5Mohm(min)
 4. dielectric test: DC 300V

NOTE:
 1. 小PE袋/大PE袋对应料号, 包袋数量及时间印刷样式:

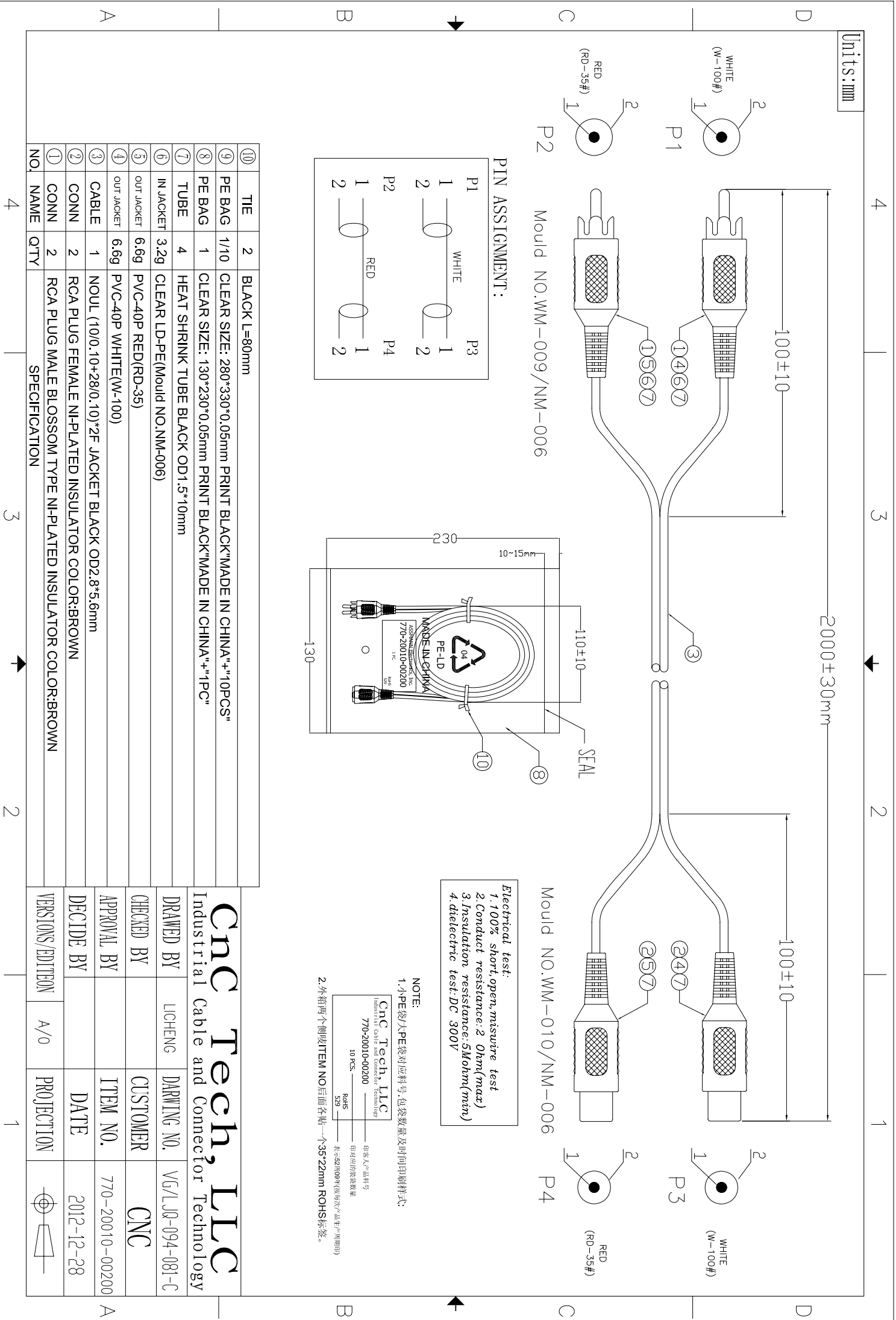


2. 外箱两个侧面ITEM NO后面各贴一个35*22mm ROHS标签.

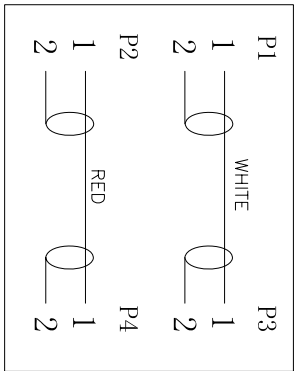
⑩	TIE	2	BLACK L=80mm
⑨	PE BAG	1/10	CLEAR SIZE: 280*330*0.05mm PRINT BLACK"MADE IN CHINA"+"10PCS"
⑧	PE BAG	1	CLEAR SIZE: 130*230*0.05mm PRINT BLACK"MADE IN CHINA"+"1PC"
⑦	TUBE	4	HEAT SHRINK TUBE BLACK OD1.5*10mm
⑥	IN JACKET	3.2g	CLEAR LD-PE(Mould NO. NM-006)
⑤	OUT JACKET	6.6g	PVC-40P RED(RD-35)
④	OUT JACKET	6.6g	PVC-40P WHITE(W-100)
③	CABLE	1	NOUL (10/0.10+28/0.10)*2F JACKET BLACK OD2.8*5.6mm
②	CONN	2	RCA PLUG FEMALE NI-PLATED INSULATOR COLOR:BROWN
①	CONN	2	RCA PLUG MALE BLOSSOM TYPE NI-PLATED INSULATOR COLOR:BROWN
NO.	NAME	QTTY	SPECIFICATION

Cnc Tech, LLC			
Industrial Cable and Connector Technology			
DRAWN BY	LICHENG	DRAWING NO.	VG/LJQ-094-081-B
CHECKED BY		CUSTOMER	CNC
APPROVAL BY		ITEM NO.	770-20010-00150
DECIDE BY		DATE	2012-12-28
VERSIONS/EDITION	A/0	PROJECTION	

Units: mm



PIN ASSIGNMENT:



Electrical test:
 1. 100% short, open, miswire test
 2. Conduct resistance: 2 Ohm(max)
 3. Insulation resistance: 5Mohm(min)
 4. dielectric test: DC 300V

NOTE:
 1. 小PE袋/大PE袋对应料号, 包装袋数量及时间印刷样式:

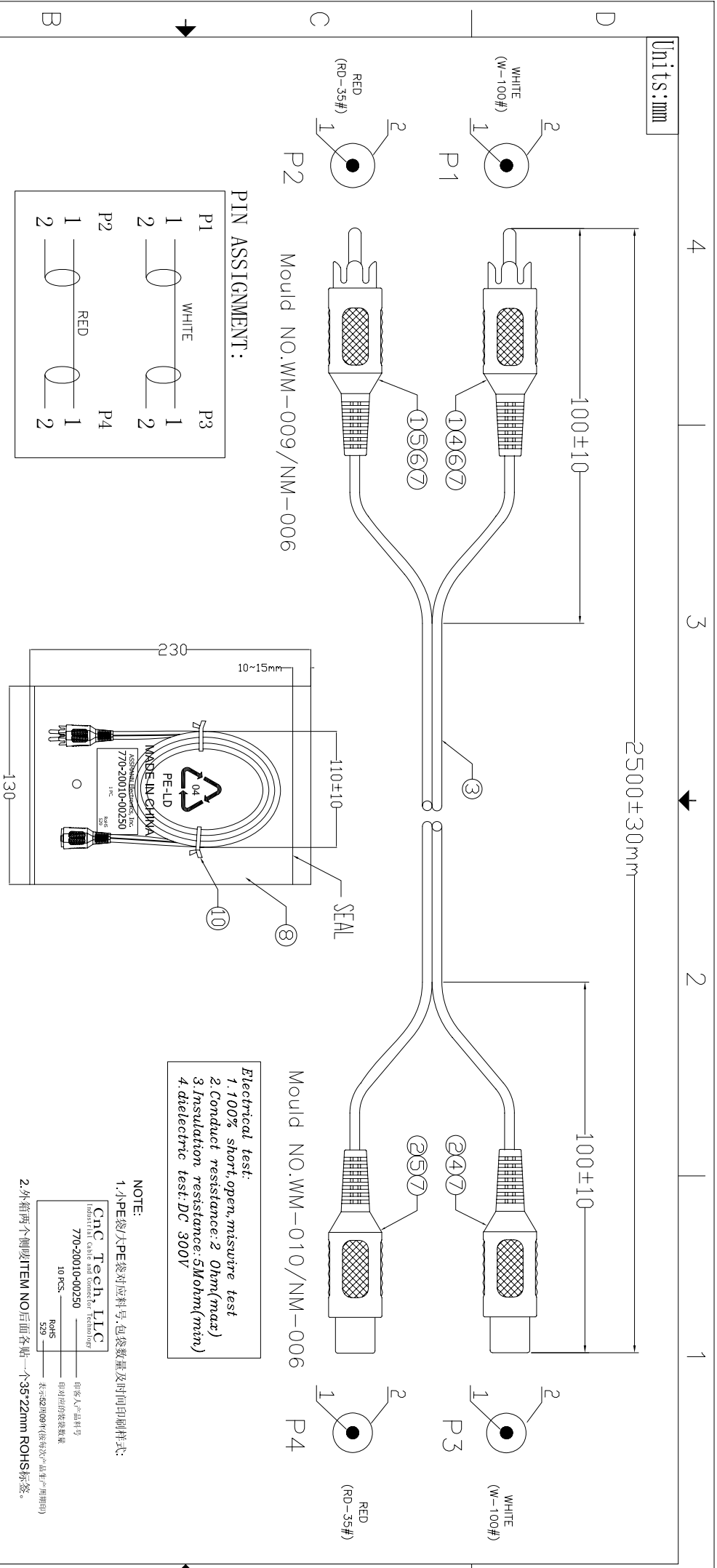


2. 外箱两个侧面ITEM NO后面各贴一个35*22mm ROHS标签。

⑩	TIE	2	BLACK L=80mm
⑨	PE BAG	1/10	CLEAR SIZE: 280*330*0.05mm PRINT BLACK"MADE IN CHINA"+"10PCS"
⑧	PE BAG	1	CLEAR SIZE: 130*230*0.05mm PRINT BLACK"MADE IN CHINA"+"1PC"
⑦	TUBE	4	HEAT SHRINK TUBE BLACK OD1.5*10mm
⑥	IN JACKET	3.2g	CLEAR LD-PE(Mould NO.NM-006)
⑤	OUT JACKET	6.6g	PVC-40P RED(RD-35)
④	OUT JACKET	6.6g	PVC-40P WHITE(W-100)
③	CABLE	1	NOUL (10/0.10+28/0.10)*2F JACKET BLACK OD2.8*5.6mm
②	CONN	2	RCA PLUG FEMALE NI-PLATED INSULATOR COLOR:BROWN
①	CONN	2	RCA PLUG MALE BLOSSOM TYPE NI-PLATED INSULATOR COLOR:BROWN
NO.	NAME	QTY	SPECIFICATION
		4	

CnC Tech, LLC			
Industrial Cable and Connector Technology			
DRAWN BY	LICHENG	DRAWING NO.	V6/LJ08-094-081-C
CHECKED BY		CUSTOMER	CNC
APPROVAL BY		ITEM NO.	770-20010-00200
DECIDE BY		DATE	2012-12-28
VERSIONS/EDITION	A/0	PROJECTION	

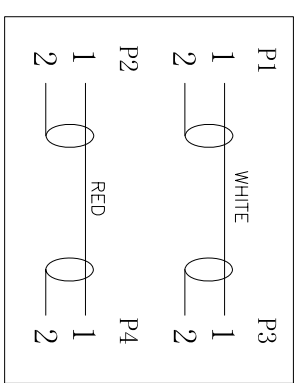
Units: mm



Mould NO. WM-009 / NM-006

Mould NO. WM-010 / NM-006

PIN ASSIGNMENT:



Electrical test:
 1. 100% short, open, miswire test
 2. Conduct resistance: 2 Ohm(max)
 3. Insulation resistance: 5Mohm(min)
 4. dielectric test: DC 300V

NOTE:
 1. 小PE袋/大PE袋对应料号, 包装袋数量及时间印刷样式:

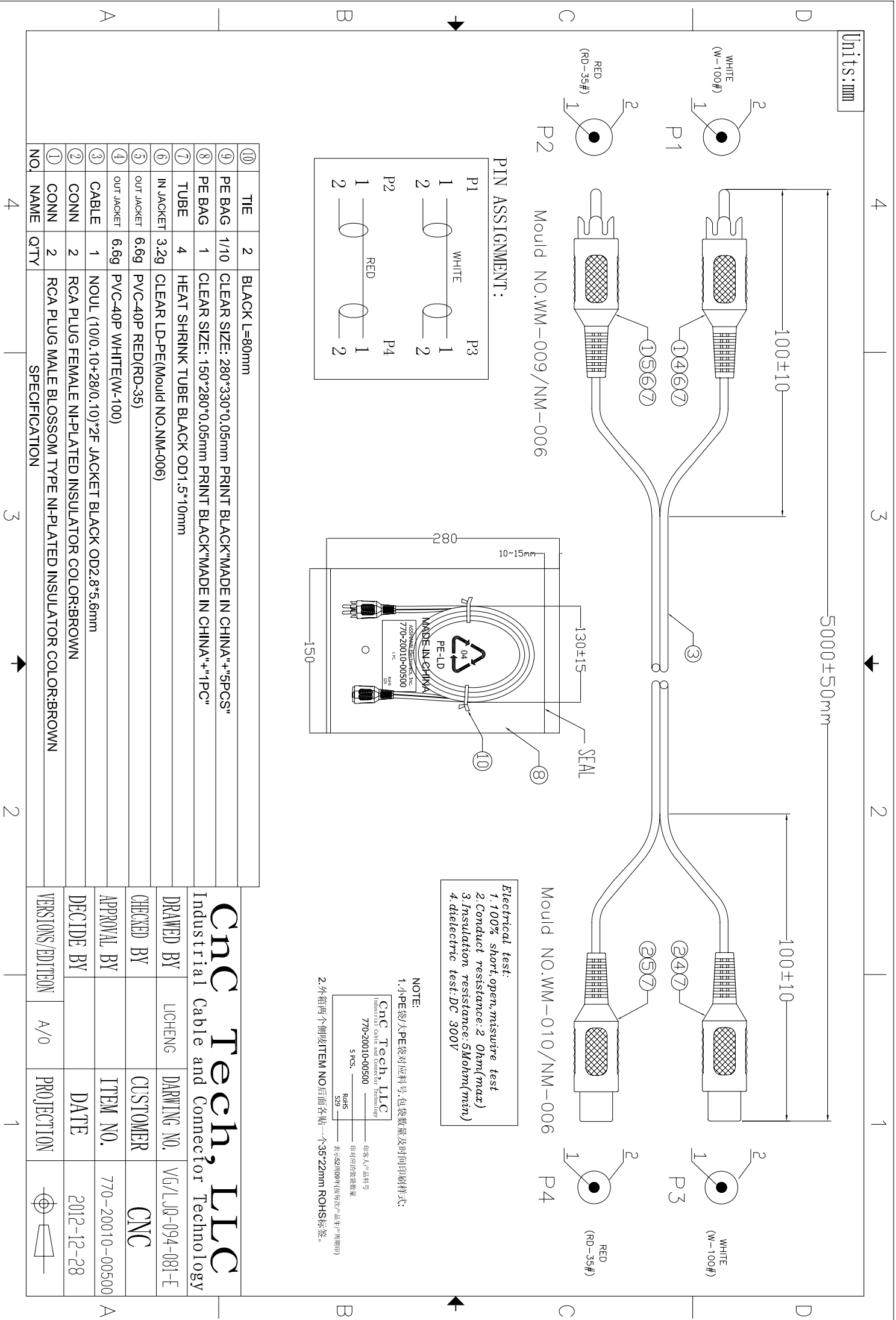
Cnc Tech, LLC Industrial Cable and Connector Technology 770-20010-00250 10 PCS	图号/产品料号 770-20010-00250 图号/图例袋数量 10 PCS
--	--

表示: 02/09年(袋每次生产前印刷)
 2. 外箱两个侧贴ITEM NO后面各贴一个35*22mm ROHS标签。

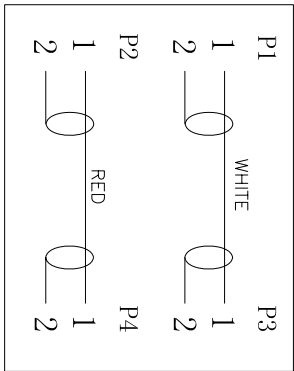
⑩	TIE	2	BLACK L=80mm
⑨	PE BAG	1/10	CLEAR SIZE: 280*330*0.05mm PRINT BLACK"MADE IN CHINA"+"10PCS"
⑧	PE BAG	1	CLEAR SIZE: 130*230*0.05mm PRINT BLACK"MADE IN CHINA"+"1PC"
⑦	TUBE	4	HEAT SHRINK TUBE BLACK OD1.5*10mm
⑥	IN JACKET	3.2g	CLEAR LD-PE(Mould NO. NM-006)
⑤	OUT JACKET	6.6g	PVC-40P RED(RD-35)
④	OUT JACKET	6.6g	PVC-40P WHITE(W-100)
③	CABLE	1	NOUL (10/0.10+28/0.10)*2F JACKET BLACK OD2.8*5.6mm
②	CONN	2	RCA PLUG FEMALE NI-PLATED INSULATOR COLOR:BROWN
①	CONN	2	RCA PLUG MALE BLOSSOM TYPE NI-PLATED INSULATOR COLOR:BROWN
NO.	NAME	QTY	SPECIFICATION

Cnc Tech, LLC			
Industrial Cable and Connector Technology			
DRAWN BY	LICHENG	DRAWING NO.	V6/LJ08-094-081-D
CHECKED BY		CUSTOMER	CNC
APPROVAL BY		ITEM NO.	770-20010-00250
DECIDE BY		DATE	2012-12-28
VERSIONS/EDITION	A/0	PROJECTION	

Units: mm



PIN ASSIGNMENT:



Electrical test:
 1. 100% short, open, miswire test
 2. Conduct resistance: 2 Ohm(max)
 3. Insulation resistance: 5Mohm(min)
 4. dielectric test: DC 300V

NOTE:
 1. 小PE袋/大PE袋对应料号, 包装袋数量及时间印刷样式:

CnC Tech, LLC Industrial Cable and Connector Technology 770-20010-00500	物料号/产品料号
5 pcs.	每对应的袋数/数量
529	表示52909年(袋每次生产周期印)

2. 外箱两个侧贴ITEM NO后面各贴一个35*22mm ROHS标签。

⑩	TIE	2	BLACK L=80mm
⑨	PE BAG	1/10	CLEAR SIZE: 280*330*0.05mm PRINT BLACK"MADE IN CHINA"+"5PCS"
⑧	PE BAG	1	CLEAR SIZE: 150*280*0.05mm PRINT BLACK"MADE IN CHINA"+"1PC"
⑦	TUBE	4	HEAT SHRINK TUBE BLACK OD1.5*10mm
⑥	IN JACKET	3.2g	CLEAR LD-PE(Mould NO.NM-006)
⑤	OUT JACKET	6.6g	PVC-40P RED(RD-35)
④	OUT JACKET	6.6g	PVC-40P WHITE(W-100)
③	CABLE	1	NOUL (10/0.10+28/0.10)*2F JACKET BLACK OD2.8*5.6mm
②	CONN	2	RCA PLUG FEMALE NI-PLATED INSULATOR COLOR:BROWN
①	CONN	2	RCA PLUG MALE BLOSSOM TYPE NI-PLATED INSULATOR COLOR:BROWN
NO.	NAME	QTY	SPECIFICATION
		4	

CnC Tech, LLC
 Industrial Cable and Connector Technology

DRAWN BY	LICHENG	DRAWING NO.	VG/LJQ-094-081-E
CHECKED BY		CUSTOMER	CNC
APPROVAL BY		ITEM NO.	770-20010-00500
DECIDE BY		DATE	2012-12-28
VERSIONS/EDITION	A/0	PROJECTION	